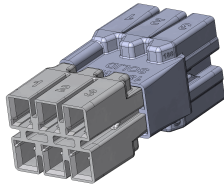




MODELS 184/186



FEATURES/BENEFITS:



- MULTI-CIRCUIT MATING CONNECTOR WITH PUSH-IN TERMINATIONS ALLOWS TOOL-FREE AND SIMPLE INSTALLATION AT OEM AND IN FIELD
- TOUCH-SAFE DESIGN ON BOTH HALVES, MEETS UL/CSA REQUIREMENT
- WIPING CONTACT DESIGN ALLOWS SAFE DISCONNECT UNDER LOAD
- LOW INSERTION FORCE MAY REDUCE RISK OF REPETITIVE TRAUMA INJURY

ELECTRICAL:

VOLTAGE: 600 V MAX
 CURRENT INTERRUPTION: 10 CYCLES
 CURRENT RATED DEVICE: 3 AMPS

MECHANICAL:

18 AWG INSERTION FORCE: 3 LB (13 N) MAX
 1/2"KO (0.875" HOLE): COMPLIANT

PHYSICAL:

HOUSING: NYLON 94V-0
 CONTACTS: COPPER ALLOY
 PLATING: TIN
 TEMPERATURE: 105 C (221 F)
 STRIP LENGTH: 3/8" (9,5 mm)
 COLOR: WHITE
 POLARIZED: YES

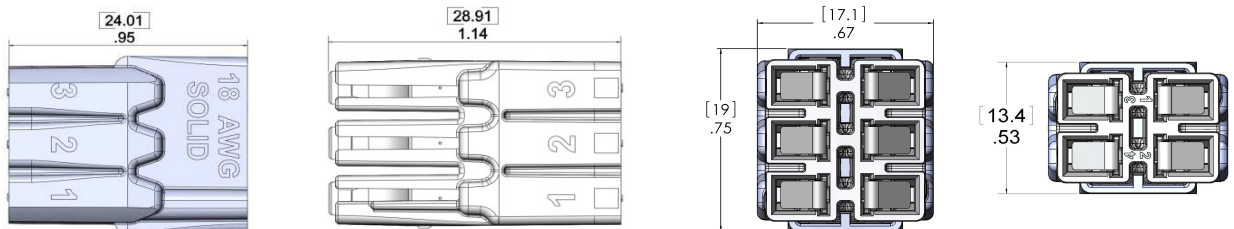
STANDARDS & SPECIFICATIONS:

UL 2459
 CSA- C22.2 NO. 2459
 RoHS COMPLIANT
 NEC 2008 410.130(G) COMPLIANT
 CEC 30-308(4) COMPLIANT
 UL 94V-0 FLAME RATING
 US & FOREIGN PATENTS PENDING

WIRE RANGE:

	MODELS 184 & 186
SOLID	18 AWG
STRANDED	N/A
TIN BONDED	18 AWG (≤16 STRAND)

DIMENSIONS:



ORDERING INFO:

CATALOG #	MODEL	# CIRCUITS	PACKAGE TYPE	WEIGHT LBS (KG):
30-1184M	184	4	2,000 PIECE CARTON	14.9 (6.8)
30-1184F	184	4	2,000 PIECE CARTON	13.6 (6.2)
30-1186M	186	6	2,000 PIECE CARTON	21.4 (9.7)
30-1186F	186	6	2,000 PIECE CARTON	18.9 (8.6)

FACTORY CONTACT:

ENGINEERED SOLUTIONS
 IDEAL INDUSTRIES, INC.
 BECKER PLACE SYCAMORE IL
 USA 60178
 P: 1-800-324-9571
 F: 1-888-222-6140
 E: oem@idealindustries.com

SALES CONTACT:

X-ON Electronics

Largest Supplier of Electrical and Electronic Components

Click to view similar products for [Heavy Duty Power Connectors](#) category:

Click to view products by [Ideal Industries](#) manufacturer:

Other Similar products are found below :

[1424439](#) [1424438](#) [09330062652](#) [2-8675P1](#) [580129-2](#) [605601-1](#) [6340G1](#) [6341G1](#) [6360G1](#) [6373G1](#) [6374g2](#) [6396G1](#) [647757-1](#) [66394-4](#)
[6643411-1](#) [6646058-2](#) [6646137-1](#) [6646138-1](#) [6646348-1](#) [6646479-1](#) [6646608-1](#) [6646786-1](#) [6646940-1](#) [6651091-1](#) [6651525-1](#) [6651529-1](#)
[6651778-1](#) [6651788-1](#) [696465-1](#) [696475-1](#) [73000005059](#) [73000005349](#) [73000005642](#) [73080255059](#) [73080965046](#) [765-15-0080A](#)
[765-16-0080B](#) [789.700-44](#) [789.700-54](#) [80-1010](#) [80-9](#) [827381-1](#) [829992-1](#) [902-77-02113](#) [PL00U-301-10D10](#) [PM103MOOLOO](#)
[PM16S1620S32-50](#) [PM212MOOLOO](#) [PM309FOOLOO](#) [PM324FOOLCH](#)