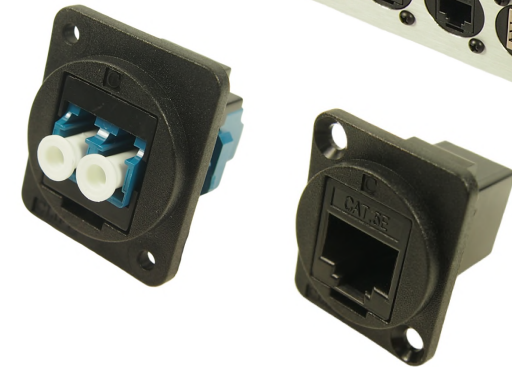
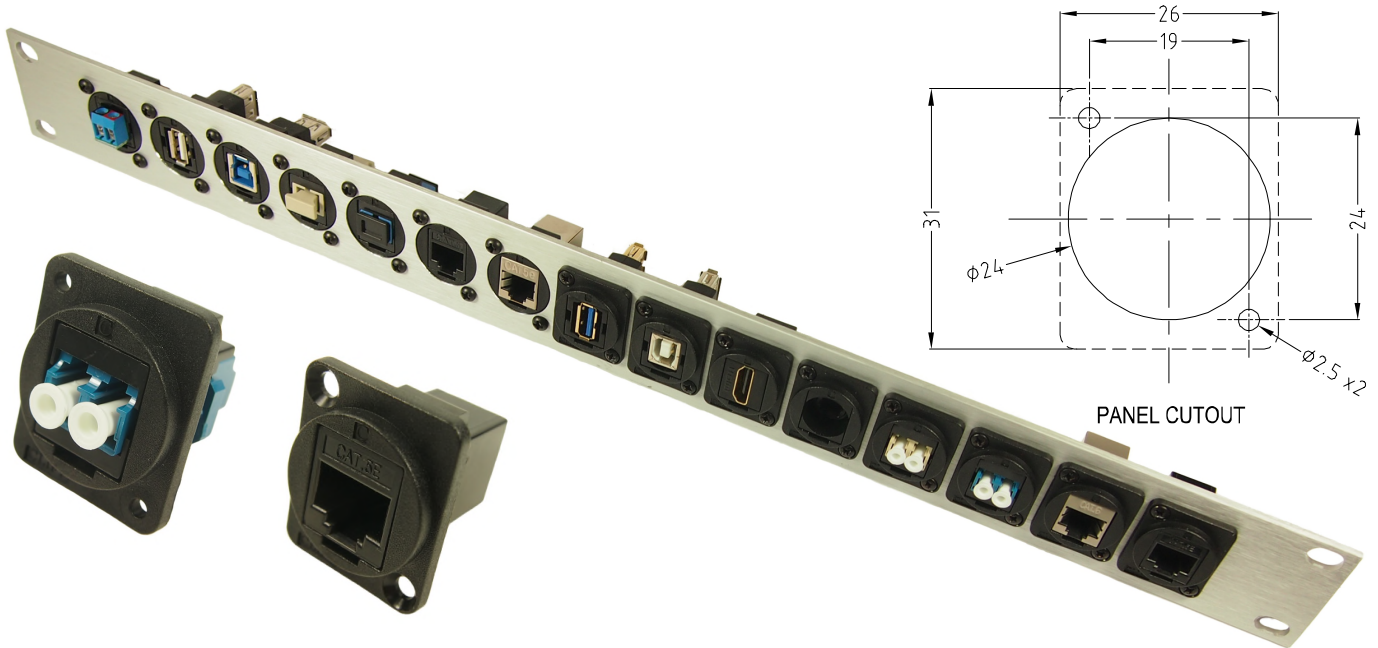


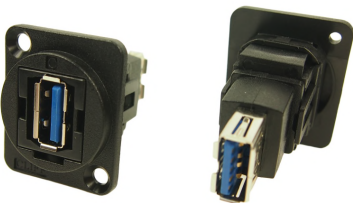
# CLIFF

## FEED THROUGH CONNECTORS FT Series

The FT Series of true feed through connectors are perfect for developing custom I/O configurations for wall-plates, rack panels, etc. ALL fit within a standard XLR panel cutout, and use common cabling for front and back connections. No soldering, no punch terminations, just use the standard cable for that particular connector style. Mount from the front or back, low rear profile accommodates the tightest “behind the panel” spaces. Available in a wide variety of styles.



Part No.	Description
<b>CP30200G</b>	HDMI A Female to HDMI A, Gold Plated, CSK hole.
<b>CP30200GX</b>	As above with Plain hole.



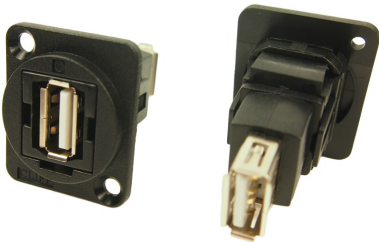
Part No.	Description
<b>CP30205N</b>	USB 3.0 A to USB 3.0 A, Nickel Plated, CSK hole.
<b>CP30205NX</b>	As above with Plain hole



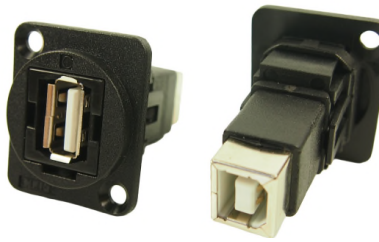
Part No.	Description
<b>CP30206N</b>	USB 3.0 B to USB 3.0 A, Nickel Plated, CSK hole.
<b>CP30206NX</b>	As above with Plain hole



**Part No.**      **Description**  
**CP30207N**    USB 2.0 B to USB 2.0 A, Nickel Plated, CSK hole.  
**CP30207NX**    As above with Plain hole



**Part No.**      **Description**  
**CP30208N**    USB 2.0 A to USB 2.0 A, Nickel Plated, CSK hole.  
**CP30208NX**    As above with Plain hole



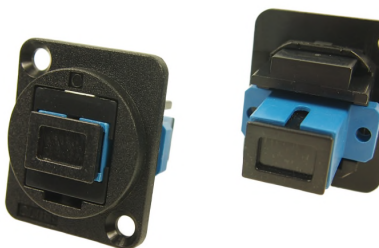
**Part No.**      **Description**  
**CP30209N**    USB 2.0 A to USB 2.0 B, Nickel Plated, CSK hole.  
**CP30209NX**    As above with Plain hole



**Part No.**      **Description**  
**CP30213**      LC Duplex SM adaptor, Black, CSK Hole  
**CP30213X**      As above with Plain hole



**Part No.**      **Description**  
**CP30214**      LC Duplex MM, Black, CSK Hole  
**CP30214X**      As above with Plain hole



**Part No.**      **Description**  
**CP30215**      SC Simplex SM, Black, CSK Hole  
**CP30215X**      As above with Plain hole



**Part No.**      **Description**  
**CP30216**      SC Simplex MM, Black, CSK Hole  
**CP30216X**      As above with Plain hole



**Part No.**      **Description**  
**CP30217**      Toslink, CSK Hole  
**CP30217X**      As above with Plain hole

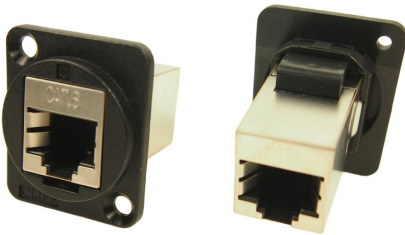
**NEW**



**Part No.**      **Description**  
**CP30220S**      FTP Cat5e RJ45-RJ45, Shielded, CSK Hole  
**CP30220SX**      As above with Plain hole



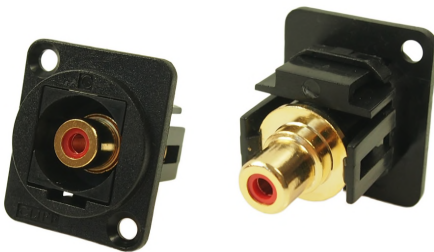
**Part No.**      **Description**  
**CP30220**      UTP Cat5e RJ45-RJ45, CSK Hole  
**CP30220X**      As above with Plain hole



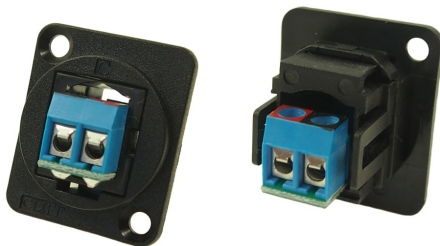
**Part No.**      **Description**  
**CP30222S**      FTP Cat6 RJ45-RJ45, Shielded, CSK Hole  
**CP30222SX**      As above with Plain hole



**Part No.**      **Description**  
**CP30222**      UTP Cat6 RJ45-RJ45, CSK Hole  
**CP30222X**      As above with Plain hole



**Part No.**      **Description**  
**CP30230**      RCA Phono RED, CSK Hole  
**CP30230X**      As above with Plain hole  
**CP30231**      RCA Phono WHITE, CSK Hole  
**CP30231X**      As above with Plain hole  
**CP30232**      RCA Phono YELLOW, CSK Hole  
**CP30232X**      As above with Plain hole  
 Other colours available on request.



**Part No.**      **Description**  
**CP30240**      2 Wire Terminal, CSK Hole  
**CP30240X**      As above with Plain hole  
 Low voltage use only. Max rating 25VAC, 60VDC, 10A.



**Part No.**      **Description**  
**CP30241**      Blanking Plate, CSK Hole  
**CP30241X**      As above with Plain hole



For further information, contact [sales@cliffuk.co.uk](mailto:sales@cliffuk.co.uk)

**Cliff Electronic Components Limited**

76 Holmethorpe Avenue, Holmethorpe Ind. Estate,  
 Redhill, Surrey RH1 2PF U.K.

Tel: +44 (0)1737 771375 Fax: +44 (0)1737 766012



Visit us online at:



[www.cliffuk.co.uk](http://www.cliffuk.co.uk)

## X-ON Electronics

Largest Supplier of Electrical and Electronic Components

*Click to view similar products for [USB Cables / IEEE 1394 Cables category](#):*

*Click to view products by [Cliff manufacturer](#):*

Other Similar products are found below :

[68768-0173](#) [FNY-W6003-01](#) [88764-0800](#) [13805532](#) [148700-1](#) [17-200621](#) [17-250051P](#) [954](#) [AC102012-2](#) [IP-USB1\(C10\)S-RW](#)  
[CABLE/RTP/USB/DT](#) [0847290003](#) [10115240-12200LF](#) [RS232-GTD](#) [USBFTVX2SA2N03A](#) [USBFTV2SA2N03A](#) [1689404-1](#) [FTP-](#)  
[629Y401](#) [FTP-628Y402](#) [943301-001](#) [FNY-W6022](#) [FNY-W6003-03](#) [1310-1015-05](#) [1310-1019-04](#) [0887283402](#) [UA-30AMFM-SL7B02](#) [UA-](#)  
[30AMFM-SL7B01](#) [UA-30AFM-LD7B03](#) [UA-30AMFM-SL7B03](#) [USBAPSCC7202A](#) [UES-1001A160](#) [UES-1003A160](#)  
[USBFTVX7SA2N20A](#) [USBFTVX2SA2N20A](#) [USBFTV2PEMSA2N10A](#) [FTP-629Y602](#) [USBCAMCM100](#) [USB A/F\\*2 to 2.54 2\\*5P-SH](#)  
[L=400mm](#) [EP-CBUSB10P2FLT](#) [1310-1033-01](#) [1310-1037-04](#) [ASR-USB](#) [68784-0075](#) [17-241361](#) [17-230471](#) [217B-BC02](#) [USB-29](#) [19800-](#)  
[010500-200-RS](#) [USB+MINI DIN 6P WITH BKT](#) [088738-8100](#)