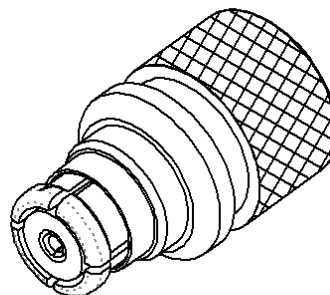
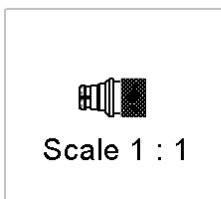
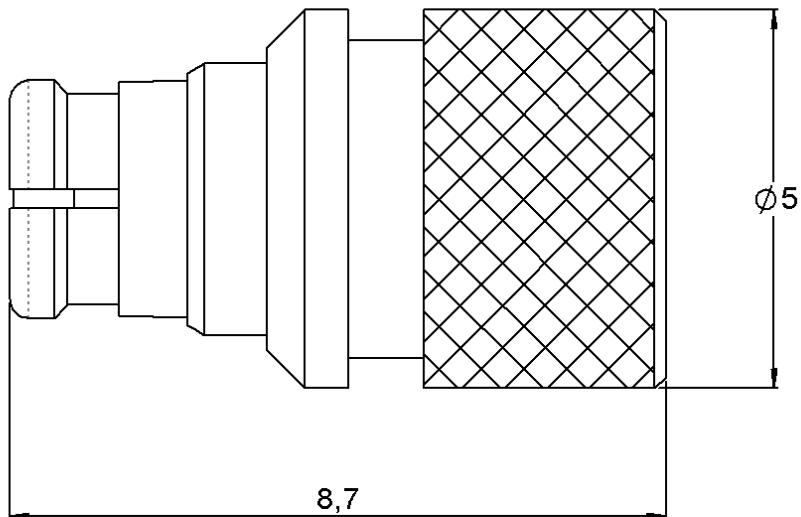
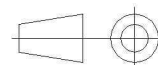


PAGE 1/2	ISSUE 1409A	SERIES TERMINATION	PART NUMBER R404N62000
----------	-------------	------------------------------	-------------------------------



All dimensions are in mm.



COMPONENTS	MATERIALS	PLATING (µm)
Body	BERYLLIUM COPPER	GOLD OVER NICKEL
Center contact	BERYLLIUM COPPER	GOLD OVER NICKEL
Outer contact	-	-
Insulator	PTFE	
Gasket	-	
Substrate	ALUMINA CERAMIC	
Resistor	THICK FILM	
Others parts	-	-

PAGE 2/2	ISSUE 1409A	SERIES TERMINATION	PART NUMBER R404N62000
----------	--------------------	------------------------------	-------------------------------

ELECTRICAL CHARACTERISTICS

Frequency (GHz) **DC - 18**
V.S.W.R (≤) **1.20**

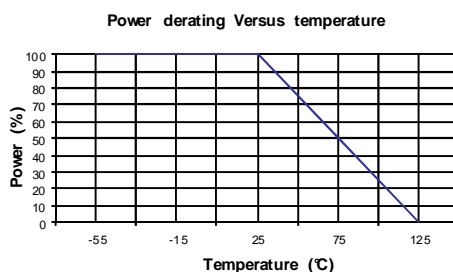
Operating Frequency Range	DC - 18	GHz
Impedance	50	Ω
DC Resistance	50	Ω ± 5%
Peak power at 25°C (1μs, 1% o)	100	W
Average power at 25°C	1	W (Free Air Cooled)
		W (Conduction Cooled)

MECHANICAL CHARACTERISTICS

Connectors	SMP	Female	MIL STD-348A
Weight	0,7500 g		

ENVIRONMENTAL CHARACTERISTICS

Operating temperature range	-55/+125	°C
Storage temperature range	-55/+125	°C



SPECIFICATION

OTHER CHARACTERISTICS

X-ON Electronics

Largest Supplier of Electrical and Electronic Components

Click to view similar products for [RF Terminators](#) category:

Click to view products by [Radiall](#) manufacturer:

Other Similar products are found below :

[M39030/3-09S](#) [9620-9003-151](#) [R404105000](#) [M39030/3-01S](#) [M39030/3-04N](#) [M39030/3-11N](#) [M39030/3-11S](#) [TNA2-50](#) [R404280000](#)
[R4042N5000](#) [32S17B-1.0E3](#) [28S1ER-001N5](#) [NF-C-1\(40\)](#) [53S1RR-001N3](#) [142275](#) [56S1RR-001N4](#) [18S15R-0.5E3](#) [65_BNC-50-0-7/133_NE](#)
[71S1RR-001N4](#) [02S17R-001D3](#) [6500.19.A](#) [R404240120](#) [HT-50-1\(40\)](#) [NF-A-PJ-1\(40\)](#) [R404260000](#) [NF-TMJ-P\(50\)](#) [HT-10-2](#) [000-1075](#)
[DCA-17-01](#) [27-9245](#) [M85049/124-13N](#) [R4041D1000](#) [1-221629-6](#) [SF8015-6007](#) [R4041D2121](#) [R4041D2000](#) [R4041D1121](#) [65010_N-50-](#)
[1/199_NE](#) [65_N-75-0-11/133_NE](#) [6550.17.AA](#) [65_N-50-0-51/113_NE](#) [65_BNC-50-0-2/133_NE](#) [6560.41.AA](#) [65_QMA-50-0-4/111_NE](#)
[65_N-50-0-1/133_NE](#) [65002_N-50-1/122_NE](#) [65_MMCX-50-0-31/111_OE](#) [65_SMB-50-0-31/111_NE](#) [65_BNC-50-0-6/113_NE](#) [2702702](#)