

ABOUT HOFFMAN PRODUCTS



Hoffman Products has cultivated a culture of excellence in its 50 years of business to meet the needs of the discerning buyer. As a TPC Wire & Cable Corp. Brand, Hoffman continues to add relevant new product for domestic manufacturers such as the Speed-Ease™ and Speed-E line of connectors, alligator clips, strain reliefs and terminal blocks. In 2011, Hoffman Products started offering the EXIOS line of cable glands and strain reliefs for hazardous areas, as well as filter fans, silicone tape, spiral wraps and split loom tubing.

BROAD LINE OF QUALITY PRODUCTS

Hoffman Products continuously strives to meet or exceed the highest product quality standards in the industry. The majority of products carried are UL listed, CSA certified and RoHS compliant. The product line consists of ferrules, connectors, tools, cable ties, heat shrink tubing, lugs, metal strip terminals, solderless terminals and kits.

HIGH INVENTORY LEVELS

Deep inventory levels allow Hoffman Products to ship immediately to meet our customer's urgent needs.

EXCELLENT SERVICE

Hoffman Products is easy to do business with because our people care about the customer. You can rely on Hoffman Products for good communication, follow-up and to meet delivery commitments. Hoffman Products continues to support manufacturers through development of additional products.

EXCELLENT VALUE

Hoffman Products provides our customers the value-add of having deep inventories of quality products, low minimum orders and customized packaging available to meet our customer's needs.



Cadillac Electric's first storefront 1919.

HISTORY OF HOFFMAN PRODUCTS

1962 Hoffman Products company begins as a supplier of solderless terminals and connectors to the domestic manufacturing market in Farmingdale, NY.

1982 Acquired by Premier Industrial Corporation of Cleveland, OH.

1996 Premier Industrial Corporation is purchased by Farnell of the United Kingdom and becomes Premier Farnell PLC. Hoffman Products becomes a Division of Premier Farnell.

2002 Hoffman Products facility moves from Farmingdale, NY to Oak Park, MI to share building and warehouse space with Cadillac Electric, another Premier Farnell Company.

2009 Hoffman Products was assumed by TPC Wire & Cable Corp., another Premier Farnell company and became a TPC Wire & Cable Brand. Inventory was transferred to TPC's warehouse in Mentor, OH.

2011 Premier Farnell sells TPC Wire & Cable Corp. to Pfingsten Partners, a private equity firm.

2012 TPC consolidates Fraser, MI warehouse, Mentor, OH warehouse and Independence, OH corporate headquarters to one facility in Macedonia, OH, a suburb of Cleveland.

TABLE OF CONTENTS

4 TERMINALS

14 CONNECTORS

18 DISCONNECTS

22 FERRULES

23 STRAIN RELIEFS
& BUSHINGS

24 ALLIGATOR CLIPS

26 CABLE GLANDS

28 CABLE TIES

32 WIRE BUNDLING

33 FILTER FANS

34 HEAT SHRINK TUBING

36 SELF-FUSING SILICONE TAPE

37 TOOLS

53 TECHNICAL INFORMATION

54 AUTOMATED EQUIPMENT
LEASE PROGRAM

TERMINALS

TOR (TAPE ON REEL) AVAILABLE

High quality solderless terminals provide solid wire crimps that meld both stranded wire or solid wire with the barrel of the terminal into one strong electrical connection. Terminals are available with or without tin plating used for corrosion resistance. Insulation is available in vinyl and nylon with or without an extra support sleeve (for double crimp). **All terminals are UL and RoHS compliant.**



RING TERMINALS

Made from 100% electrolytic copper, tin plated for corrosion resistance and available in wire sizes 26 AWG-600MCM, stud sizes #2-3/4".



SPADE TERMINALS

Made from 100% electrolytic copper, tin plated for corrosion resistance and available in wire sizes 22-10 AWG, stud sizes #2-3/4".

26-22 AWG Ring Terminals

Stud Size	Non-Insulated	Vinyl	Vinyl with Support Sleeve	Nylon with Support Sleeve	Nylon	High Temp 650°F	High Temp 900°F	Heat Shrink
2	26222	-	-	FND26222	-	-	-	-
4	26223	-	-	FND26223.7	-	-	-	-
6	2622M3	-	-	FND2622M3	-	-	-	-
8	26224	-	-	FND26224	-	-	-	-

22-16 AWG Ring Terminals

Stud Size	Non-Insulated	Vinyl	Vinyl with Support Sleeve	Nylon with Support Sleeve	Nylon	High Temp 650°F	High Temp 900°F	Heat Shrink
2	2216S2	FVL2216S2	-	-	-	-	-	-
4	2216S3	FVL2216S3R2	FVD2216S3	FND2216S3	-	-	-	-
6	2216M3	FVL2216M3R2	FVD2216M3	FND2216M3	-	2216M3NPT	WS2216M3HT	AHS3
8	22164	FVL22164R2	FVD22164	FND22164	-	22164NPT	WS22164HT	AHS4
10	22165	FVL22165R2	FVD22165	FND22165	-	22165NPT	WS22165HT	AHS5
1/4"	22166	FVL22166R2	FVD22166	FND22166	-	-	WS22166HT	AHS6
5/16"	22168	FVL22168R2	FVD22168	FND22168	-	-	-	AHS8
3/8"	22169	FVL22169R2	FVD22169	FND22169	-	-	-	AHS9
1/2"	221613	FVL221613	FVD221613	FND221613	-	-	-	-

16-14 AWG Ring Terminals

Stud Size	Non-Insulated	Vinyl	Vinyl with Support Sleeve	Nylon with Support Sleeve	Nylon	High Temp 650°F	High Temp 900°F	Heat Shrink
4	16143	FVL16143R2	FVD16143	FND16143	-	-	-	-
6	1614M3	FVL1614M3R2	FVD1614M3	FND1614M3	-	1614M3NPT	WS1614M3HT	BHS3
8	16144	FVL16144R2	FVD16144	FND16144	-	16144NPT	WS16144HT	BHS4
10	16145	FVL16145R2	FVD16145	FND16145	-	1614M5NPT	WS16145HT	BHS5
1/4"	16146	FVL16146R2	FVD16146	FND16146	-	-	WS16146HT	BHS6
5/16"	16148	FVL16148R2	FVD16148	FND16148	-	-	-	BHS8
3/8"	16149	FVL16149R2	FVD16149	FND16149	-	-	-	BHS9
1/2"	161413	FVL161413R2	FVD161413	FND161413	-	-	-	-

12-10 AWG Ring Terminals

Stud Size	Non-Insulated	Vinyl	Vinyl with Support Sleeve	Nylon with Support Sleeve	Nylon	High Temp 650°F	High Temp 900°F	Heat Shrink
4	1210S3/J	FVL12103R2/J	FVD12103/J	-	-	-	-	-
6	1210S3	FVL1210S3R2	FVD1210S3	FND1210S3	-	-	-	-
8	12104	FVL12104R2	FVD12104	FND12104	-	12104NPT	WS12104HT	DHS4
10	12105	FVL12105R2	FVD12105	FND12105	-	12105NPT	WS12105HT	DHS5
1/4"	12106	FVL12106R2	FVD12106	FND12106	-	12106NPT	WS12106HT	DHS6
5/16"	12108	FVL12108R2	FVD12108	FND12108	-	-	-	DHS8
3/8"	12109	FVL12109R2	FVD12109	FND12109	-	-	-	DHS9
1/2"	121013	FVL121013	FVD121013	FND121013	-	-	-	-
9/16"	121014	-	-	-	-	-	-	-

8 AWG Ring Terminals

Stud Size	Non-Insulated	Vinyl	Vinyl with Support Sleeve	Nylon with Support Sleeve	Nylon	High Temp 650°F	High Temp 900°F	Heat Shrink
8	8S4R1	-	-	-	FN8S4	-	-	-
10	8S5R1	-	-	-	FN8S5	-	-	-
1/4"	8S6R1	-	-	-	FN8S6	-	-	-
5/16"	88R1	-	-	-	FN88	-	-	-
3/8"	89R1	-	-	-	FN89	-	-	-
1/2"	813R1	-	-	-	FN813	-	-	-

6 AWG Ring Terminals



Stud Size	Non-Insulated	Vinyl	Vinyl with Support Sleeve	Nylon with Support Sleeve	Nylon	High Temp 650°F	High Temp 900°F	Heat Shrink
10	65R1	-	-	-	FN65	-	-	-
1/4"	66R1	-	-	-	FN66	-	-	-
5/16"	68R1	-	-	-	FN68	-	-	-
3/8"	69R1	-	-	-	FN69	-	-	-
1/2"	613R1	-	-	-	FN613	-	-	-

4 AWG Ring Terminals



Stud Size	Non-Insulated	Vinyl	Vinyl with Support Sleeve	Nylon with Support Sleeve	Nylon	High Temp 650°F	High Temp 900°F	Heat Shrink
10	4S5R1	-	-	-	FN4S5	-	-	-
1/4"	46R1	-	-	-	FN46	-	-	-
5/16"	48R1	-	-	-	FN48	-	-	-
3/8"	4S9R1	-	-	-	FN49	-	-	-
1/2"	413R1	-	-	-	FN413	-	-	-

2 AWG Ring Terminals



Stud Size	Non-Insulated	Vinyl	Vinyl with Support Sleeve	Nylon with Support Sleeve	Nylon	High Temp 650°F	High Temp 900°F	Heat Shrink
10	2S5R1	-	-	-	FN2S5	-	-	-
1/4"	2S6R1	-	-	-	FN2S6	-	-	-
5/16"	2S8R1	-	-	-	FN2S8	-	-	-
3/8"	29R1	-	-	-	FN29	-	-	-
7/16"	211R1	-	-	-	-	-	-	-
1/2"	213R1	-	-	-	FN213	-	-	-

Large Non-Insulated Ring Terminals



Stud Size	WIRE SIZE							
	1/0 AWG	2/0 AWG	3/0 AWG	4/0 AWG	250/300MCM	300/350MCM	400/500MCM	500/600MCM
1/4"	1/06R1	2/06R1	3/06R1	4/06R1	-	-	-	-
5/16"	1/08R1	2/08R1	3/08R1	4/08R1	1508R1	-	-	-
3/8"	1/09R1	2/09R1	3/09R1	4/09R1	1509R1	2009R1	2509R1	3009R1
7/16"	1/011R1	2/011R1	3/011R1	4/011R1	15011R1	20011R1	25011R1	30011R1
1/2"	1/013R1	2/013R1	3/013R1	4/013R1	15013R1	20013R1	25013R1	30013R1
5/8"	1/016R1	2/016R1	3/016R1	4/016R1	15016R1	20016R1	25016R1	30016R1
3/4"	-	-	-	4/019R1	-	20019R1	-	-

Non-Insulated Flag Terminals



Stud Size	WIRE SIZE										
	22-16	16-14	12-10	8	6	4	2	1/0	2/0	3/0	4/0
8	FG22164	FG16144	FG12104	-	-	-	-	-	-	-	-
10	FG22165	FG16145	FG12105	FG85	FG65	FG45	-	-	-	-	-
1/4"	-	FG16146	FG12106	FG86	FG66	FG46	FG26	FG1/06	-	-	-
5/16"	-	-	-	FG88	FG68	FG48	FG28	FG1/08	FG2/08	FG3/08	FG4/08
3/8"	-	-	-	FG89	FG69	FG49	FG29	FG1/09	FG2/09	FG3/09	FG4/09
1/2"	-	-	-	-	-	-	-	FG1/013	FG2/013	FG3/013	FG4/013

26-22 AWG Spade Terminals



Stud Size	Non-Insulated	Vinyl	Vinyl with Support Sleeve	Nylon with Support Sleeve	Nylon	High Temp 650°F	High Temp 900°F	Heat Shrink
4	26223A	-	-	FND26222A	-	-	-	-
6	26223.7A	-	-	FND26223.7A	-	-	-	-
8	26224A	-	-	FND26224A	-	-	-	-

22-16 AWG Spade Terminals

Stud Size	Non-Insulated	Vinyl	Vinyl with Support Sleeve	Nylon with Support Sleeve	Nylon	High Temp 650°F	High Temp 900°F	Heat Shrink
4	2216M3A	FVL2216M3AR2	FVD2216M3A	FND2216M3A	-	-	-	-
6	2216S3A	FVL2216S3AR2	FVD2216S3A	FND2216S3A	-	-	-	AHS3A
8	2216S4A	FVL2216S4AR2	FVD2216S4A	FND2216S4A	-	-	-	AHS4A
10	2216M5A	FVL2216M5AR2	FVD2216M5A	FND2216M5A	-	-	-	AHS5A
1/4"	22166A	FVL22166AR2	FVD22166A	FND22166A	-	-	-	-

16-14 AWG Spade Terminals

Stud Size	Non-Insulated	Vinyl	Vinyl with Support Sleeve	Nylon with Support Sleeve	Nylon	High Temp 650°F	High Temp 900°F	Heat Shrink
6	1614S3A	FVL1614S3AR2	FVD1614S3A	FND1614S3A	-	-	-	BHS3A
8	16144A	FVL16144AR2	FVD16144A	FND16144A	-	-	-	BHS4A
10	16145A	FVL16145AR2	FVD16145A	FND16145A	-	-	-	BHS5A
1/4"	16146A	FVL16146AR2	FVD16146A	FND16146A	-	-	-	-

12-10 AWG Spade Terminals

Stud Size	Non-Insulated	Vinyl	Vinyl with Support Sleeve	Nylon with Support Sleeve	Nylon	High Temp 650°F	High Temp 900°F	Heat Shrink
6	1210S3A	FVL1210S3AR2	FVD1210S3A	FND1210S3A	-	-	-	-
8	12104A	FVL1210S4AR2	FVD1210S4A	FND1210S4A	-	-	-	DHS4A
10	12105A	FVL12105AR2	FVD12105A	FND12105A	-	-	-	DHS5A
1/4"	12106A	FVL12106AR2	FVD12106A	FND12106A	-	-	-	DHS6A

22-16 AWG Flanged Spade Terminals

Stud Size	Non-Insulated	Vinyl	Vinyl with Support Sleeve	Nylon with Support Sleeve	Nylon	High Temp 650°F	High Temp 900°F	Heat Shrink
6	2216S3B	FVL2216S3BR2	FVD2216S3B	FND2216S3B	-	-	-	-
8	2216S4B	FVL2216S4BR2	FVD2216S4B	FND2216S4B	-	-	-	-
10	2216S5B	FVL2216S5BR2	FVD2216S5B	FND2216S5B	-	-	-	-

16-14 AWG Flanged Spade Terminals



Stud Size	Non-Insulated	Vinyl	Vinyl with Support Sleeve	Nylon with Support Sleeve	Nylon	High Temp 650°F	High Temp 900°F	Heat Shrink
6	1614S3B	FVL1614S3BR2	FVD1614S3B	FND1614S3B	-	-	-	-
8	1614S4B	FVL1614S4BR2	FVD1614S4B	FND1614S4B	-	-	-	-
10	1614S5B	FVL1614S5BR2	FVD1614S5B	FND1614S5B	-	-	-	-

12-10 AWG Flanged Spade Terminals



Stud Size	Non-Insulated	Vinyl	Vinyl with Support Sleeve	Nylon with Support Sleeve	Nylon	High Temp 650°F	High Temp 900°F	Heat Shrink
6	1210S3B	FVL1210S3BR2	FVD1210S3B	FND1210S3B	-	-	-	-
8	1210S4B	FVLS12104BR2	FVD1210S4B	FND1210S4B	-	-	-	-
10	1210S5B	FVLS12105BR2	FVD1210S5B	FND1210S5B	-	-	-	-

22-16 AWG Locking Spade Terminals



Stud Size	Non-Insulated	Vinyl	Vinyl with Support Sleeve	Nylon with Support Sleeve	Nylon	High Temp 650°F	High Temp 900°F	Heat Shrink
6	WS22163LST	FVL22163LSR2	FVD22163LST	FND22163LSR2	-	-	-	-
8	WS22164LST	FVL22164LSR2	FVD22164LST	FND22164LSR2	-	-	-	-
10	WS22165LST	FVL22165LSR2	FVD22165LST	FND22165LSR2	-	-	-	-

16-14 AWG Locking Spade Terminals



Stud Size	Non-Insulated	Vinyl	Vinyl with Support Sleeve	Nylon with Support Sleeve	Nylon	High Temp 650°F	High Temp 900°F	Heat Shrink
6	WS16143LST	FVL16143LSR2	FVD16143LST	FND16143LSR2	-	-	-	-
8	WS16144LST	FVL16144LSR2	FVD16144LST	FND16144LSR2	-	-	-	-
10	WS16145LST	FVL16145LSR2	FVD16145LST	FND16145LSR2	-	-	-	-

12-10 AWG Locking Spade Terminals



Stud Size	Non-Insulated	Vinyl	Vinyl with Support Sleeve	Nylon with Support Sleeve	Nylon	High Temp 650°F	High Temp 900°F	Heat Shrink
6	WS12103LST	FVL12103LSR2	FVD12103LST	FND12103LSR2	-	-	-	-
8	WS12104LST	FVL12104LSR2	FVD12104LST	FND12104LSR2	-	-	-	-
10	WS12105LST	FVL12105LSR2	FVD12105LST	FND12105LSR2	-	-	-	-

TERMINALS

Our tubular lugs are available in non-plated, tin-plated and color-coded. They are UL certified for heavy duty applications with trucks, buses, forklifts, automotive and industrial equipment. They have annealed terminals for easy crimping, along with seamless barrels for a secure accurate crimp. They are also made from high quality copper: *110 Cu ASTM B152*.

Tubular Lugs – Tin Plated

Stud Size	WIRE SIZE								
	8	6	4	2	1	1/0	2/0	3/0	4/0
10	-	-	1590T76	-	-	-	-	-	-
1/4"	1701T76	1601T76	1591T76	1580T76	1560T76	1550T76	1540T76	1530T76	1520T76
5/16"	1702T76	1602T76	1592T76	1581T76	1561T76	1551T76	1541T76	1531T76	1521T76
3/8"	1703T76	1603T76	1593T76	1582T76	1562T76	1552T76	1542T76	1532T76	1522T76
1/2"	1704T76	1604T76	1594T76	1583T76	1563T76	1553T76	1543T76	1533T76	1523T76

More options available: **Non-plated** (delete "T" from part number - i.e. "170176"); **With sight hole** (add "S" before "76" in part number - i.e. "1523TS76").

Tubular Lugs – Color Coded Tin Plated with Sight Hole

Stud Size	WIRE SIZE								
	8	6	4	2	1	1/0	2/0	3/0	4/0
10	TLS8576	-	-	-	-	-	-	-	-
1/4"	TLS8676	TLS6676	TLS4676	TLS2676	TLS1676	TLS1/0876	TLS2/0676	TLS3/0676	-
5/16"	TLS8876	TLS6876	TLS4876	TLS2876	TLS1876	TLS1/0976	TLS2/0876	TLS3/0876	-
3/8"	TLS8976	TLS6976	TLS4976	TLS2976	TLS1976	TLS1/01376	TLS2/0976	TLS3/0976	TLS4/0976
1/2"	-	-	-	-	-	-	TLS2/01376	TLS3/01376	TLS4/01376

Square Tongue Tubular Lugs – Single Hole

Stud Size	WIRE SIZE				
	300 MCM	350 MCM	500 MCM	750 MCM	1000 MCM
3/8"	STLS300976	STLS350976	STLS500976	-	-
1/2"	STLS3001376	STLS3501376	STLS5001376	STLS7501376	STLS10001376
5/8"	STLS3001676	STLS3501676	STLS5001676	STLS7501676	STLS10001676

Stud Size	WIRE SIZE								
	8	6	4	2	1	1/0	2/0	3/0	4/0
10	STLS8576	-	-	-	-	-	-	-	-
1/4"	STLS8676	STLS6676	STLS4676	STLS2676	STLS1676	-	STLS2/0676	-	-
5/16"	STLS8876	-	STLS4876	STLS2876	STLS1876	STLS1/0876	STLS2/0876	STLS3/0876	-
3/8"	STLS8976	STLS6976	STLS4976	STLS2976	STLS1976	STLS1/0976	STLS2/0976	STLS3/0976	STLS4/0976
1/2"	-	-	-	-	-	STLS1/01376	STLS2/01376	STLS3/01376	STLS4/01376

Available in **2 hole version**, contact sales@hoffmanproducts.com for more information.

Serrated Ring Terminals



Wire Size	Stud Size	Crimp Type	Part No.
22-16	8	Double	2216M4SST
20-16	6	Double	2016M3SST
20-16	6	Double	20163SST
20-16	8	Double	20164SST
20-16	10	Double	20165SST
20-16	1/4"	Double	20166SST

Ring Terminals



Wire Size	Stud Size	Crimp Type	Part No.
22-16	5	Single	2216M2ST
22-16	8	Single	20144ST
22-16	5	Double	2216S2ST
22-16	6	Double	22163ST
22-16	6	Double	22162ST
22-16	6	Double	2016M3ST
22-16	8	Double	2216M4ST
22-16	8	Double	22164ST
22-16	10	Double	2216M5ST
22-16	10	Double	22165ST
22-16	1/4"	Double	22166ST
22-16	5/16"	Double	22168ST
22-16	3/8"	Double	2216S9ST
22-16	3/8"	Double	22169ST
20-14	7/16"	Single	201411ST
18-14	8	Double	18144ST
18-14	8	Single	18144ST1
18-14	10	Double	18145ST
16-12	10	Double	16125ST
16-10	10	Double	14105ST

Spade Terminals



Wire Size	Stud Size	Crimp Type	Part No.
22-16	4	Double	22162AST
20-16	6	Double	22163AST
20-16	8	Double	22164AST
20-14	6	Double	20143AST
20-14	8	Double	20144AST

TERMINALS

METAL STRIP MOUNTED TERMINALS

Housing for 110 Tab

Part No.	Description	Use With
F3110	3 Position Female Housing	MI2216T110MS
F4110	4 Position Female Housing	MI2216T110MS
F6110	6 Position Female Housing	MI2216T110MS
F9110	9 Position Female Housing	MI2216T110MS
M3110	3 Position Male Housing	FI2216T110MS
M4110	4 Position Male Housing	FI2216T110MS
M6110	6 Position Male Housing	FI2216T110MS
M9110	9 Position Male Housing	FI2216T110MS
F3110LK	3 Position Locking Female Housing	MI2216T110MS
F4110LK	4 Position Locking Female Housing	MI2216T110MS
F6110LK	6 Position Locking Female Housing	MI2216T110MS
F9110LK	9 Position Locking Female Housing	MI2216T110MS
M3110LK	3 Position Locking Male Housing	FI2216T110MS
M4110LK	4 Position Locking Male Housing	FI2216T110MS
M6110LK	6 Position Locking Male Housing	FI2216T110MS
M9110LK	9 Position Locking Male Housing	FI2216T110MS

Housing for 250 Tab

Part No.	Description	Use With
F2250	2 Position Female Housing	MI2216T250MS
F3250	3 Position Female Housing	MI2216T250MS
F4250	4 Position Female Housing	MI2216T250MS
F6250	6 Position Female Housing	MI2216T250MS
F8250	8 Position Female Housing	MI2216T250MS
M2250	2 Position Male Housing	FI2216T250MS
M3250	3 Position Male Housing	FI2216T250MS
M4250	4 Position Male Housing	FI2216T250MS
M6250	6 Position Male Housing	FI2216T250MS
M8250	8 Position Male Housing	FI2216T250MS
F2250LK	2 Position Locking Female Housing	MI2216T250MS
F3250LK	3 Position Locking Female Housing	MI2216T250MS
F4250LK	4 Position Locking Female Housing	MI2216T250MS
F6250LK	6 Position Locking Female Housing	MI2216T250MS
F8250LK	8 Position Locking Female Housing	MI2216T250MS
M2250LK	2 Position Locking Male Housing	FI2216T250MS
M3250LK	3 Position Locking Male Housing	FI2216T250MS
M4250LK	4 Position Locking Male Housing	FI2216T250MS
M6250LK	6 Position Locking Male Housing	FI2216T250MS
M8250LK	8 Position Locking Male Housing	FI2216T250MS

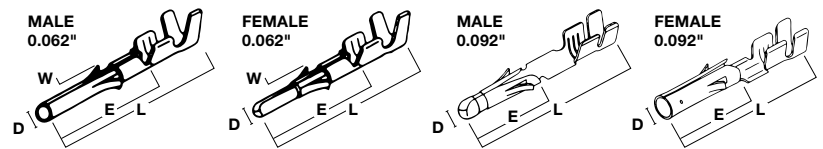
Female Disconnects

Wire Size	Tab Size (in)	Part No.
22-16	0.250 x 0.032	DF22161TMS
20-14	0.250 x 0.032	DF20141TMS
22-16	0.187 x 0.020	DF22161ST5MS
22-16	0.187 x 0.032	DFOS22161ST8MS
18-12	0.250 x 0.032	DFH18121TMS
22-18	0.205 x 0.020	DFOS22181MT5MS
20-14	0.250 x 0.032	DFOS20141TMS

Male Disconnects

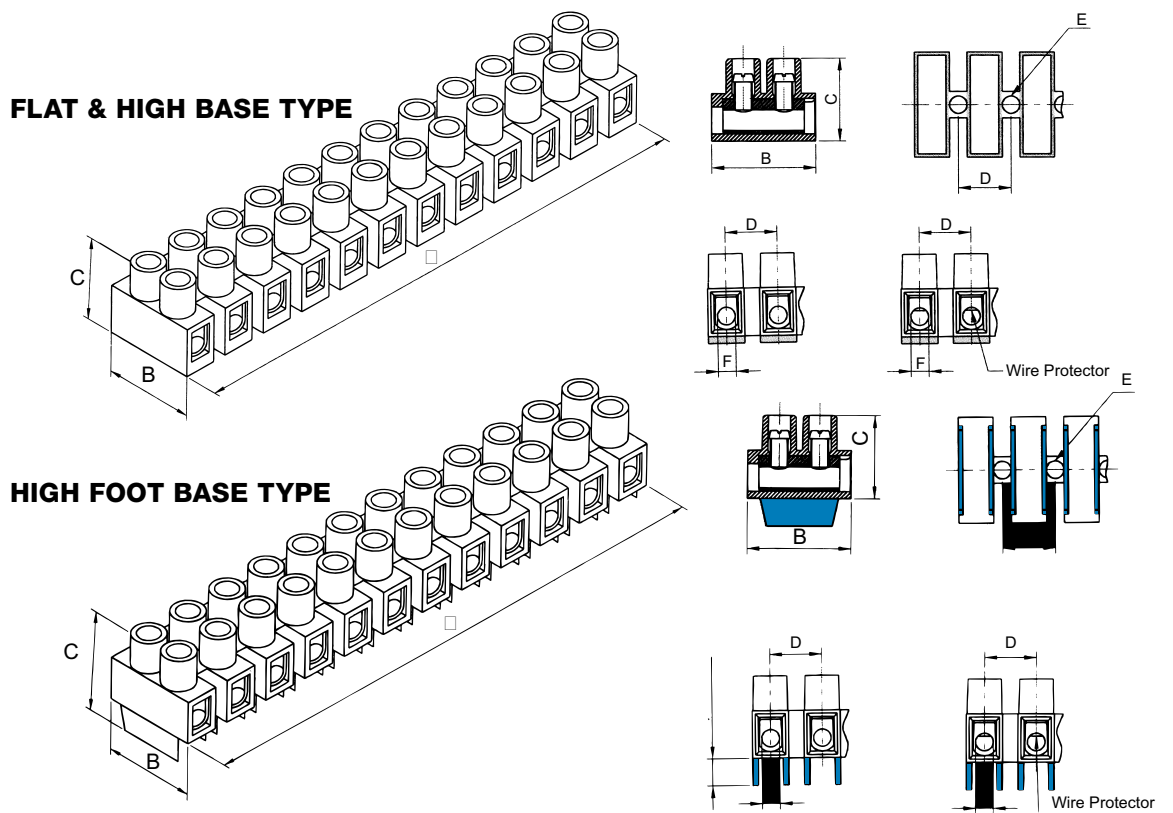
Wire Size	Tab Size (in)	Part No.
22-16	0.110 x 0.020	MI2216T110MS
20-16	0.250 x 0.020	MI2216T250MS
20-14	0.250 x 0.032	MI2014T250MS

Pin and Socket Connectors



Wire Size	Description	Part No.	L (in)	E (in)	W (in)	D (in)
22-18	Male Pin 0.062" Dia Strip M Type	MPIN2218T62ST	0.680	0.428	0.124	0.062
22-18	Female Socket 0.062" Dia Strip M Type	FPIN2218T62STM	0.664	0.404	0.124	0.062
22-18	Male Pin 0.092" Dia Strip KM Type	MPIN2218T92ST	0.866	0.445	-	0.0906
22-18	Female Socket 0.092" Dia Strip KM Type	FPIN2218T92ST	0.870	0.441	-	0.0906

Hoffman Products' Safe Wire Terminal Blocks are a high quality, cost saving method for wire termination. The "Safe Wire" feature is designed with a stainless steel plate that closes over the wire to eliminate breakage of the wire strands and create a safe, secure connection. They are made from 6/6 nylon, making them durable, flame retardant and heat resistant. The blocks can be cut to specific requirements, saving time and money. Available in flat base, high base and high foot base construction.



Terminal Blocks



Part No.	Construction	Wire Range	# of Positions	Screw (zinc plated)	Dimensions (in)					
					A	B	C	D	E	F
HB1820ABWP/12	Flat Base	22-12	12	M2.6 X 5	3.77	0.64	0.52	0.32	0.11	0.11
HB141810WP/12	Flat Base	22-12	12	M3 X 6	4.63	0.80	0.62	0.39	0.14	0.13
HHB1820ABWP/12	High Base	22-12	12	M2.6 X 5	3.79	0.64	0.57	0.32	0.11	0.11
HHB141810WP/12	High Base	22-12	12	M3 X 6	4.63	0.80	0.67	0.39	0.14	0.13
HB121012WP/12	Flat Base	22-10	12	M3.5 X 7	5.40	0.64	0.75	0.47	0.15	0.15
HB813.5WP/12	Flat Base	22-8	12	M4 X P	6.22	1.01	0.99	0.53	0.17	0.19
FHB1820ABWP/12	High Foot Base	22-12	12	M2.6 X 5	3.78	0.64	0.67	0.32	0.11	0.11
FHB141810WP/12	High Foot Base	22-12	12	M3 X 6	4.63	0.80	0.79	0.39	0.14	0.13

Custom cut pieces available for an additional cost, contact sales@hoffmanproducts.com.

Hoffman Products' Closed End Connectors are made from 6/6 nylon, UL94V2, with a tin plated copper insert and are UL certified, CSA certified and RoHS compliant.

Closed End Connectors



Part No.	Color	Temperature	Voltage	Wire Size
CE100	Clear	105°C	300V	22-18
CE233	Clear	105°C	300V	16-14
CE551	Clear	105°C	300V	12-10
CE800	Clear	105°C	300V	8
CE233HR	White	150°C	300V	16-14
CE551HR	White	150°C	300V	12-10
2218SDB	Clear	105°C	300V	22-18
1614SDB	Clear	105°C	300V	16-14
1210SBD	Clear	105°C	300V*	12-10
8SDB	Clear	105°C	300V*	8

**Also available in 600V version*

Speed-Ease™ Connectors have a grooved outer design to enable easy twisting even when hands may be greasy. They also provide a threaded inner edge which grabs the wires to provide faster and smoother twisting. A unique funnel entry design helps feed the wires into the connector quickly and easily.

SPEED-EASE™ CONNECTORS

- **Speed-Ease™:** These uniquely designed connectors will save you money! Designed with a narrower outer barrel but the same inner dimensions as a standard type so they fit into tight spaces. They can also handle temperatures up to 105°C (221°F).
- **Standard Speed-Ease™:** Color coded with a square wire insert that grabs the wires producing a secure connection. Designed to handle temperatures up to 105°C (221°F).
- **Black High Temperature Speed-Ease™:** Designed to handle higher temperatures up to 150°C (302°F).
- **Wing Tab Speed-Ease™:** Designed with a square wire insert with wing tabs to make the twist action easier.

GROUND CONNECTORS

- Designed for making ground connections and bonding for non-metallic sheathed cable.

Speed-Ease™ Connectors



Part No.	Color	Wire Range (min)	Wire Range (max)	Voltage
SEHE3	Orange	1#18+1#20	4#16+1#20	600
SEHE4	Yellow	3#20	1#10+2#14+1#16	600
SEHE5	Red	3#18	3#10	600

Standard Speed-Ease™ Connectors



Part No.	Color	Wire Range (min)	Wire Range (max)	Voltage
HE1	Gray	2#22	1#14+1#20	300
HE2	Blue	2#22	3#16	300
HE3	Orange	1#18+1#20	4#16+1#16	600
HE4	Yellow	3#20	1#10+2#14+1#16	600
HE5	Red	3#18	3#10	600

Black High Temperature Speed-Ease™



Part No.	Color	Wire Range (min)	Wire Range (max)	Voltage
HE1H	Black	3#22	2#16	300
HE3H	Black	3#20	2#14+1#16	300

Wing Tab Speed-Ease™ Connectors



Part No.	Color	Wire Range (min)	Wire Range (max)	Voltage
HE3YW	Yellow	2#18	3#12	600
HE4TW	Tan	3#22	3#10	600
HE5RW	Red	3#16	5#12	600
HE6GW	Gray	3#14+1#18	3#10	600
HE7BW	Blue	2#10+1#12	1#18+3#10	600

Ground Connectors



Part No.	Color	Wire Range (min)	Wire Range (max)	Voltage
HE9GD	Green	2#14	3#12+1#14	-

CONNECTORS

Speed-E Connectors are made for quick, fast and efficient splicing. They can also reduce installation costs up to 200%. Available in both solid and clear plastic housings with 2-8 positions. For solid copper wire in ranges 12-22 AWG only. Color coded for easy identification. 24 AMP, 600 Volt, 6/6 nylon, temperature: 105°C (221°F).

SPEED-E CONNECTORS

- UL/CSA Certified, VDE Approved Flame Retardant Thermoplastic, UL94V2.

TRANSPARENT SPEED-E CONNECTORS

- UL/CSA Certified, VDE Approved Flame Retardant Thermoplastic, UL94V2.

Speed-E Connectors



Part No.	Color	# of Positions
SPEEDE2	Red	2
SPEEDE3	Orange	3
SPEEDE4	Yellow	4
SPEEDE5	Gray	5
SPEEDE8	Black	8

Transparent Speed-E Connectors



Part No.	Color	# of Positions
SPEEDE2CL	Red	2
SPEEDE3CL	Orange	3
SPEEDE4CL	Yellow	4
SPEEDE5CL	Gray	5
SPEEDE8CL	Black	8

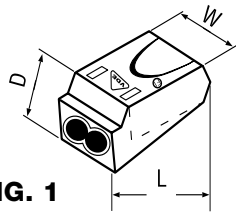


FIG. 1

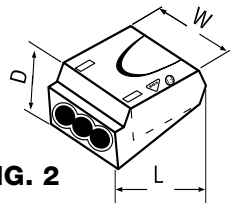


FIG. 2

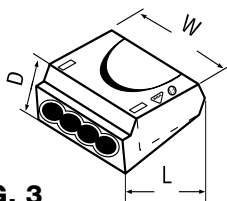


FIG. 3

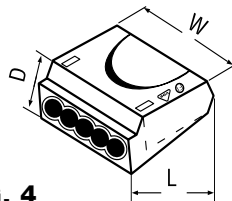


FIG. 4

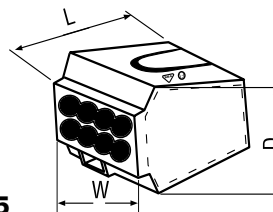


FIG. 5

Speed-E Connector Dimensions

Figure No.	Part No.	PART No. (Clear)	W (mm)	D (mm)	L (mm)	Poles
1	SPEEDE2	SPEEDE2CL	10.5	9.5	19.5	2
2	SPEEDE3	SPEEDE3CL	13.5	9.5	19.7	3
3	SPEEDE4	SPEEDE4CL	17.2	9.5	19.7	4
4	SPEEDE5	SPEEDE5CL	21.1	9.5	19.7	5
5	SPEEDE8	SPEEDE8CL	17.5	16.8	19	8

Butt Connectors

Non-Insulated	Vinyl Butted Seam Flared	Vinyl Tubular Flared	Nylon Straight Butted Seam	Nylon Straight Tubular	Nylon Flared Butted Seam	Nylon Flared Tubular	Nylon Window with Sleeve	High Temp 650°F	High Temp 900°F	Heat Shrink
C2216	FVC2216WS	FVC2216	NCL2216	NC2216	FNC2216WS	FNC2216	NDCW2216	C2216NPT	WSC2216HT	HSC2216
C1614	FVC1614WS	FVC1614	NCL1614	NC1614	FNC1614WS	FNC1614	NDCW1614	C1614NPT	WS1614HT	HSC1614
C1210	FVC1210WS	FVC1210	NCL1210	NC1210	FNC1210WS	FNC1210	NDCW1210	C1210NPT	WS1210HT	HSC1210
C2622	-	-	-	NC2622	-	-	-	-	-	-

Parallel Connectors

Non-Insulated	Vinyl Butted Seam Flared	Vinyl Tubular Flared	Nylon Straight Butted Seam	Nylon Straight Tubular	Nylon Flared Butted Seam	Nylon Flared Tubular	Nylon Window with Sleeve	High Temp 650°F	High Temp 900°F	Heat Shrink
P2216	-	FVP2216	-	NP2216	-	FNP2216	-	P2216NPT	-	-
P1614	-	FVP1614	-	NP1614	-	FNP1614	-	P1614NPT	-	-
P1210	-	FVP1210	-	NP1210	-	FNP1210	-	P1210NPT	-	-
PC2216	FVLP2216R2	-	-	-	FNPC2216	-	-	-	-	-
PC1614	FVLP1614	-	-	-	FNPC1614	-	-	-	-	-
PC1210	FVLP1210	-	-	-	FNPC1210	-	-	-	-	-

8-600MCM

Butt Connectors

Wire Size	Non-Insulated	Vinyl Butted Seam Flared
8	C8R1	FVC8R1
6	C6R1	FVC6R1
4	C4R1	-
2	C2R1	-
1/0	C1/0R1	-
2/0	C2/0R1	-
3/0	C3/0R1	-
4/0	C4/0R1	-
300MCM	C150R1	-
350MCM	C200R1	-
500MCM	C250R1	-
600MCM	C300R1	-

8-500MCM

Parallel Connectors

Wire Size	Non-Insulated
8	P8R1
6	P6R1
4	P4R1
2	P2R1
1/0	P1/0R1
2/0	P2/0R1
3/0	P3/0R1
4/0	P4/0R1
250-300MCM	P150R1
350MCM	P250R1
400-500MCM	P300R1

Female Disconnects



Wire Size	Tab Size (in)	Non-Insulated	Non-Insulated Support Sleeve	Vinyl Butted Seam	Vinyl Support Sleeve	Vinyl Fully Insulated Support Sleeve
22-16	0.110 X 0.020	DF2216T110A5	DDF2216T110A5	FVDF2216T110A5	FVHDF2216T110A5	LVHDF2216T110A5
22-16	0.110 x 0.032	DF2216T110A8	DDF2216T110A8	FVDF2216T110A8	FVHDF2216T110A8	LVHDF2216T110A8
22-16	0.187 x 0.020	DF2216T187A5	DDF2216T187A5	FVDF2216T187A5	FVHDF2216T187A5	LVHDF2216T187A5
22-16	0.187 x 0.032	DF2216T187A8	DDF2216T187A8	FVDF2216T187A8	FVHDF2216T187A8	LVHDF2216T187A8
22-16	0.250 x 0.032	DF2216T250A	DDF2216T250A	FVDF2216T250A	FVHDF2216T250A	LVHDF2216T250A
16-14	0.187 x 0.020	DF1614T187A5	DDF1614T187A5	FVDF1614T187A5	FVHDF1614T187A5	LVHDF1614T187A5
16-14	0.187 x 0.032	DF1614T187A8	DDF1614T187A8	FVDF1614T187A8	FVHDF1614T187A8	LVHDF1614T187A8
16-14	0.250 x 0.032	DF1614T250A	DDF1614T250A	FVDF1614T250A	FVHDF1614T250A	LVHDF1614T250A
12-10	0.250 x 0.032	DF1210T250A	DDF1210T250A	FVDF1210T250A	FVDDF1210T250A	LVDDF1210T250A

Female Disconnects — Continued



Wire Size	Tab Size (in)	PC Insulated Support Sleeve	PC Fully Insulated Support Sleeve	Nylon Coupler	Heat Shrink	Heat Shrink Support Sleeve
22-16	0.110 x 0.020	FNDDF2216T110A5	LNDDF2216T110A5	-	-	-
22-16	0.110 x 0.032	FNDDF2216T110A8	LNDDF2216T110A8	-	-	-
22-16	0.187 x 0.020	FNDDF2216T187A5	LNDDF2216T187A5	-	-	-
22-16	0.187 x 0.032	FNDDF2216T187A8	LNDDF2216T187A8	-	-	-
22-16	0.250 x 0.032	FNDDF2216T250A	LNDDF2216T250A	LNDF2216250H	AHSLDFT250A	AHSDFT250A
16-14	0.187 x 0.020	FNDDF1614T187A5	LNDDF1614T187A5	-	-	-
16-14	0.187 x 0.032	FNDDF1614T187A8	LNDDF1614T187A8	-	-	-
16-14	0.250 x 0.032	FNDDF1614T250A	LNDDF1614T250A	LNDF1614250H	BHSLDFT250A	BHSDFT250A
12-10	0.250 x 0.032	FNDDF1210T250A	LNDDF1210T250A	LNDF1210250H	DHSLDFT250A	DHSDFT250A

Female Bullet Connectors



Wire Size	Diameter (in)	Vinyl Fully Insulated	Vinyl Fully Insulated Support Sleeve
22-16	0.156	CVGF2216T5	CVDGF2216T5
16-14	0.156	CVGF1614T5	CVDGF1614T5
16-14	0.195	-	CVDGF1614T7
12-10	0.195	CVGF1210T7	CVDGF1210T7

Male Disconnects



Wire Size	Tab Size (in)	Non-Insulated	Non-Insulated Support Sleeve	Vinyl Butted Seam	Vinyl Support Sleeve	Vinyl Fully Insulated Support Sleeve
22-16	0.110 x 0.020	-	-	FVDM2216T110A5	-	LVHDF2216T110A5
22-16	0.110 x 0.032	-	-	FVDM2216T110A8	-	LVHDF2216T110A8
22-16	0.187 x 0.020	DM2216T187A5	-	FVDM2216T187A5	-	LVHDF2216T187A5
22-16	0.187 x 0.032	DM2216T187A8	-	FVDM2216T187A8	-	LVHDF2216T187A8
22-16	0.250 x 0.032	DM2216T250	DDM2216T2505.9/J	FVDM2216T250	FVDDM2216T250	LVHDF2216T250A
16-14	0.187 x 0.020	DM1614T187A5	-	FVDM1614T187A5	-	LVHDF1614T187A5
16-14	0.187 x 0.032	DM1614T187A8	-	FVDM1614T187A8	-	LVHDF1614T187A8
16-14	0.250 x 0.032	DM1614T250	DDM1614T2505.9/J	FVDM1614T250	FVDDM1614T250	LVHDF1614T250A
12-10	0.250 x 0.032	DM1210T250	DDM1210T2506.9/J	FVDM1210T250	FVDDM1210T250	LVDDF1210T250A

Male Disconnects — Continued



Wire Size	Tab Size (in)	PC Insulated Support Sleeve	PC Fully Insulated Support Sleeve	Nylon Coupler	Heat Shrink	Heat Shrink Support Sleeve
22-16	0.110 x 0.020	FNDDM2216T110A5	-	-	-	-
22-16	0.110 x 0.032	FNDDM2216T110A8	-	-	-	-
22-16	0.187 x 0.020	FNDDM2216T187A5	-	-	-	-
22-16	0.187 x 0.032	FNDDM2216T187A8	-	-	-	-
22-16	0.250 x 0.032	FNDDM2216T250	-	LNDM2216250H	AHSDMT250	AHSLDMT250
16-14	0.187 x 0.020	FNDDM1614T187A5	-	-	-	-
16-14	0.187 x 0.032	FNDDM1614T187A8	-	-	-	-
16-14	0.250 x 0.032	FNDDM1614T250	-	LNDM1614250H	BHSDMT250	BHSLDMT250
12-10	0.250 x 0.032	FNDDM1210T250	-	LNDM1210250H	DHSDMT250	DHSLDMT250

Male Bullet Connectors



Wire Size	Diameter (in)	Vinyl Fully Insulated	Vinyl Fully Insulated Support Sleeve
22-16	0.156	FVGM2216T5	FVDGM2216T5
16-14	0.156	FVGM1614T5	FVDGM1614T5
16-14	0.195	-	FVDGM1614T7
12-10	0.156	-	FVDGM1210T5
12-10	0.195	FVGM1210T7	FVDGM1210T7

DISCONNECTS

Open Barrel Female



Wire Size	Tab Size (in)	Non-Insulated
24-20	0.110 x 0.020	LTO01T110N
22-18	0.205 x 0.032	LTO21T205A
20-16	0.110 x 0.020	LTO41T110N
20-16	0.187 x 0.020	LTO41T187N/J
22-18	0.250 x 0.032	LTO21T250N
18-14	0.250 x 0.032	LTO61T250N
14-10	0.250 x 0.032	LTO81T250N/J

Open Barrel — With Locking Tab



Wire Size	Tab Size (in)	Non-Insulated Female	Non-Insulated Male
22-20	0.110 x 0.020	LTI01T110N/J	LIM01T110A
22-18	0.250 x 0.032	LTI21T250N	-
20-16	0.110 x 0.020	LTI41T110N/J	LIM41T110B/J
20-14	0.250 x 0.032	LTI51T250N/J	LIM51T250N/J
18-14	0.250 x 0.032	LTI61T250N/J	LIM61T250N/J
12-10	0.250 x 0.032	LTI81T250N	-

Piggyback Connectors



Wire Size	Tab Size (in)	Non-Insulated	Vinyl Butted Seam	Vinyl Support Sleeve	Nylon Insulated Support Sleeve
22-16	0.250 x 0.032	DFM2216T250A	FVDFM2216T250A	FVDDFM2216T250A	FNDDFM2216T250A
16-14	0.250 x 0.032	DFM1614T250A	FVDFM1614T250A	FVDDFM1614T250A	FNDDFM1614T250A
12-10	0.250 x 0.032	-	FVDFM1210T250A	FVDDFM1210T250A	FNDDFM1210T250A

Female Flag Disconnects



Wire Size	Tab Size (in)	Non-Insulated	Nylon Insulated	Metal Strip
22-16	0.187 x 0.020	DF22181ST5	FNDF22181ST5	FNDF22181ST5MS
22-16	0.187 x 0.032	DF22181ST8	FNDF22181ST8	FNDF22181ST8MS
22-16	0.250 x 0.032	DF22181T	FNDF22181T	FNDF22181TMS
16-14	0.187 x 0.020	DF18141ST	FNDF18141ST5	FNDF18141ST5MS
16-14	0.187 x 0.032	DF18141ST8	FNDF18141ST8	FNDF18141ST8MS
16-14	0.250 x 0.032	DF18141T	FNDF18141T	FNDF18141TMS
12-10	0.250 x 0.032	DF12101T	-	-

Insulating Sleeves for Disconnects



Type	Tab Width (in)	Entry Diameter (mm)	Part No.
Straight	0.187	2.50	KF1825
Straight	0.187	3.00	KF1830
Straight	0.205	3.00	KF2032
Straight	0.250	2.50	KF2525
Straight	0.250	2.80	KF2528
Straight	0.250	3.20	KF2532
Straight	0.250	3.80	KF2538
Flag	0.187	3.00	KFF183012M
Flag	0.187	3.20	KFF1832
Flag	0.250	3.20	KFF2532
Flag	0.250	4.00	KFF2540M
Flag	0.250	4.80	KFF2548

Non-Insulated Male/Female



Tab Size (in)	Female Disconnect	Male Disconnect
0.250 x 0.032	1DF2DM250	2DM1DF250

Quick-Tap Splice Connectors



Color	Type	Part No.
Red	Tap	TP18
Blue	Tap	TP14
Yellow	Tap	TP10
White	Through Tap	TH14

Knife Disconnects



Wire Size	Vinyl Butted Seam Flared
22-16	FV2216K/J
16-14	FV1614K/J
12-10	FV1210K/J

SPEED-EASE™ FERRULES

High quality tin plated ferrules are available in non-insulated or insulated for use in terminal blocks to avoid direct contact with wire and avoid the possibility of wire strand breakage. Available in wire sizes 26-2/0 AWG.

- No more frayed or broken wires
- Tin plated copper barrel with nylon insulation
- 105°C (221°F) / 300 Volts

Non-Insulated

Part No.	Wire Size
FE226	22 AWG
FE206	20 AWG
FE186	18 AWG
FE167	16 AWG
FE147	14 AWG
FE1212	12 AWG
FE1010	10 AWG
FE815	8 AWG
FE615	6 AWG
FE418	4 AWG
FE220	2 AWG
FE1/022	1/0 AWG
FE2/025	2/0 AWG
FE3/025	3/0 AWG

Single Insulated

Part No.	Wire Size	Color
FEB268	26 AWG	Light Blue
FEV268	26 AWG	Violet
FEB248	24 AWG	Turquoise
FEP248	24 AWG	Pink
FEO228	22 AWG	Orange
FEW228	22 AWG	White
FEB208	20 AWG	Blue
FEW208	20 AWG	White
FEG208	20 AWG	Gray
FER188	18 AWG	Red
FEY188	18 AWG	Yellow
FEBK168	16 AWG	Black
FER168	16 AWG	Red
FEG148	14 AWG	Gray
FEB148	14 AWG	Blue
FEO1212	12 AWG	Orange
FEG1212	12 AWG	Gray
FEGN1012	10 AWG	Olive
FEBK1012	10 AWG	Black
FEY1012	10 AWG	Yellow
FEBR812	8 AWG	Brown
FEI812	8 AWG	Ivory
FER812	8 AWG	Red
FEI612	6 AWG	Ivory
FEGN612	6 AWG	Green
FEB612	6 AWG	Blue
FEBK416	4 AWG	Black
FEBR416	4 AWG	Brown
FEY416	4 AWG	Yellow
FER216	2 AWG	Red
FEBG216	2 AWG	Beige
FEB1/020	1/0 AWG	Blue
FEGN1/020	1/0 AWG	Olive
FEY2/020	2/0 AWG	Yellow

STRAIN RELIEFS & BUSHINGS

Strain Reliefs



STRAIN RELIEFS

Strain reliefs are used extensively for protecting the cords of appliances, computers, and other electrical and electronic devices.

- Cuts assembly costs
- Prolongs cord life
- 6/6 Nylon, UL94V2, Black

These are also available in white as a special order item, for more information contact sales@hoffmanproducts.com.

Part No.	Type	UL Wire	Mount Hole Dim.
FSTRB2	Flat	SPT-1	9.5 x 8.7 mm
FSTRB3	Flat	SPT-1	11 x 9.9 mm
FSTRB3HD	Flat	SPT-1	11 x 9.9 mm
FSTRB4	Flat	SPT-2	12.7 x 11.8 mm
FSTRB4HD	Flat	SPT-2	12.7 x 11.8 mm
RSTRB5	Round	SVI SVT	12.7 x 11.5 mm
RSTRB5HD	Round	SVI SVT	12.7 x 11.5 mm
RSTRB6	Round	SJT 3C#18	15.9 x 14 mm
RSTRB616	Round	SJT 3C#16	15.9 x 14 mm
RSTRB6HD	Round	SJT 3C#18	15.9 x 14 mm
RSTRB7	Round	SJT 3C#14	19 x 16.8 mm
RSTRB7HD	Round	SJT SC #14	19 x 16.8 mm
RSTRB8HD	Round	SJT 3C#12	22.2 x 21.3 mm
RSTRB9	Switch	#18 22-36PCS	19 x 19 mm
RSTRB6HD16	Round	SJT3C#16	15.9 x 14 mm

Black Snap Bushings



BLACK SNAP BUSHINGS

Black snap bushings are designed to protect electrical cables, ropes and utility lines fed through the metal holes. The open/closed version allows you to install the bushing after the cable is installed.

- Smooth and insulate raw-edged holes in metal chassis
- Lock firmly into the hole with fingertip pressure
- 6/6 Nylon, UL94V2, Black

These are also available in white as a special order item, for more information contact sales@hoffmanproducts.com.

Part No.	Type	Mount Hole Dim.
HSBB8	Closed	7.8 mm
HSBB10	Closed	9.5 mm
HSBB13	Closed	12.7 mm
HSBB16	Closed	15.9 mm
HSBB19	Closed	19 mm
HSBB22	Closed	22 mm
HSBB26	Closed	25 mm
HSBB30	Closed	29.7 mm
HSBBOC10	Open/Closed	9.5 mm
HSBBOC13	Open/Closed	12.7 mm
HSBBOC16	Open/Closed	15.9 mm
HSBBOC19	Open/Closed	19 mm
HSBBOC22	Open/Closed	22.2 mm
HSBBOC26	Open/Closed	25.5 mm

ALLIGATOR CLIPS

Hoffman Products charging clips, alligator clips and insulators are ideal for making temporary connections. Copper and nickel plated clips are available with or without insulation.

Charging Clips



Part No.	AMPS	Insulation	With Screw
T510	10	None	No
T510S	10	None	Yes
T510SB	10	Black	Yes
T510SR	10	Red	Yes
T520S	20	None	Yes
T520SR	20	Red	Yes
T520SB	20	Black	Yes
T530S	20	None	Yes
T530SB	20	Black	Yes
T530SBL	20	Blue	Yes
T530SG	20	Green	Yes
T530SR	20	Red	Yes
T530SW	20	White	Yes
T530SY	20	Yellow	Yes
T550	50	None	Yes
T550SB	50	Black	Yes
T550SR	50	Red	Yes
T615	15	None	No
T615B	15	Black	No
T615R	15	Red	No
T6410C*	100	None	No
T6410CB*	100	Black	No
T6410CR*	100	Red	No
T641CP	30	None	No
T641CPB	30	Black	No
T641CPR	30	Red	No
T641CPC*	75	None	No
T641PCB1*	75	Black	No
T641PCR1*	75	Red	No

* Material is Copper, 176°C

Standard



Part No.	AMPS	Insulation
T115	10	None
T115SR	10	Red
T115SB	10	Black
T154	5	None
T160	10	None
T160R	10	Red
T160B	10	Black

For clip with a screw add **S** to part number, i.e. **T160S**. For copper plating add **C** to part number, i.e. **T160C**.

Insulators for Standard



Insulators Part No.	For Clip Part No.	Color
T154INSB	T154	Black
T154INSBL	T154	Blue
T154INSGR	T154	Green
T154INSR	T154	Red
T154INSY	T154	Yellow
T160INSB	T160	Black
T160INSR	T160	Red
T160INSW	T160	White



RELY ON HOFFMAN PRODUCTS FOR:

- Deep Inventory
- Low Minimum Order Requirements
- Customized Packaging Options
- Exceptional Service

9600 VALLEY VIEW RD, MACEDONIA, OH 44056 • PHONE: 800-645-2014 • FAX: 866-896-3017
 EMAIL: SALES@HOFFMANPRODUCTS.COM • WEBSITE: WWW.HOFFMANPRODUCTS.COM

CABLE GLANDS

ARMORED CABLE GLANDS FOR HAZARDOUS AREAS

- Dual seal on inner and outer jacket of the cable
- Armor acceptance range from 0-0.10" (0-2.5 mm)
- Maximum clamping range — up to 3.75" (95 mm)
- Innovative "Interlocking Armor Cone" — Safe assembly
- Zero torsion on cable cores and armor
- Knurled grip profile provides quicker hand assembly time
- Fewer parts with maximum grip
- Approved to the latest IECEx, ATEX, Ex-e and Ex-d standards
- Zone 1, Zone 2, Zone 20, Zone 21 and Zone 22
- Gas Groups IIA, IIB and IIC— Apparatus Group III
- Equipment Protection Level GbDa
- IP 68 5 bar, EN 60529
- Temperature range -60°C to +105°C (-76°F to 221°F)
- Halogen and phosphorous free
- Silicone Seals and O-Rings: Ideal in low temperature applications

Metric Brass Cable Glands



Part No.	Gland Size	Thread Type & Size (AG)
YE16MK-BB	20-1	M16 x 1.5"
YE20MK-BB	20-1	M20 x 1.5"
YE20MM-BB	20-2	M20 x 1.5"
YE20ML-BB	20-3	M20 x 1.5"
YE25MK-BB	20-3	M25 x 1.5"
YE25MM-BB	25	M25 x 1.5"
YE32MK-BB	32	M32 x 1.5"
YE40MK-BB	40	M40 x 1.5"
YE50MK-BB	50	M50 x 1.5"
YE63MK-BB	63	M63 x 1.5"
YE75MK-BB	75	M75 x 1.5"

NPT Brass Cable Glands



Part No.	Gland Size	Thread Type & Size (AG)
YE09NK-BB	20-1	3/8"
YE13NM-BB	20-2	1/2"
YE13NL-BB	20-3	1/2"
YE21NK-BB	25	3/4"
YE29NK-BB	32	1"
YE29LK-BB	40	1-1/4"
YE36NK-BB	40	1-1/2"
YE50NK-BB	50	2"
YE52NK-BB	63	2-1/2"
YE30NK-BB	75	3"

NOTE: Parts listed above are brass, as indicated by the part number ending **BB**. For nickel plated brass, order part number ending **BR**. For stainless steel, order part number ending **SS**. For nickel plated brass threads with brass body, order part number ending **B1**. Accessories available.

Mechanical Data	Materials and Technical Data
Material	Brass, Nickel Plated Brass
Seals / O-Rings	Silicone, VMQ
Clamping Insert	PA 6 Fire Protection Class V2 UL94
Armor	Metallic Armor or Screen
Temperature Rating	-60°C to 105°C (-76°F to 221°F)
Protection	IP 68 5 bar

NON-ARMORED CABLE

- Ex-e and Ex-d strain relief for non-armored cable
- Approvals and certifications: ATEX/IECEX, UL/UR, CE, CSA, Gost and German Lloyd
- NEMA 4x and 6 (IP 67/68) Liquid tight — submersible to 300 feet
- IP69K rated — ideal in splash or hose down applications
- Patented form seal allows 150 PSIG (10 BAR) rating — highest in industry
- VO flame rating according to UL94 — halogen and phosphorus free — non-toxic
- RoHS and Deca BDE — environmentally compliant to the newest standards
- Large cable range: 0.08" - 1.26" (2 – 32 mm)
- Non-corrosive: resistant to salt water, weak acids, weak alkalis, alcohol, esters, ketones, ether, gasoline and mineral, animal and vegetable oil

Non-Armored Hazardous Cable Glands

Thread Type & Size (AG)	Nylon	Nickel Plated Brass	Elongated
M12	CD12MA-BX	CD12MA-MX	CD12DA-MX
M12	CD12MR-BX	CD12MR-MX	CD12DR-MX
M16	CD16MA-BX	CD16MA-MX	CD16DA-MX
M16	CD16MR-BX	CD16MR-MX	CD16DR-MX
M16 LRG	CD17MA-BX	CD17MA-MX	CD17DA-MX
M16 LRG	CD17MR-BX	CD17MR-MX	CD17DR-MX
M20	CD20MA-BX	CD20MA-MX	CD20DA-MX
M20	CD20MR-BX	CD20MR-MX	CD20DR-MX
M20 LRG	CD22MA-BX	CD22MA-MX	CD22DA-MX
M20 LRG	CD22MR-BX	CD22MR-MX	CD22DR-MX
M25	CD25MA-BX	CD25MA-MX	CD25DA-MX
M25	CD25MR-BX	CD25MR-MX	CD25DR-MX
M32	CD32MA-BX	CD32MA-MX	CD32DA-MX
M32	CD32MR-BX	CD32MR-MX	CD32DR-MX
M40	CD40MA-BX	CD40MA-MX	CD40DA-MX
M40	CD40MR-BX	CD40MR-MX	CD40DR-MX
M50	CD50MA-BX	CD50MA-MX	CD50DA-MX
M50	CD50MR-BX	CD50MR-MX	CD50DR-MX
M63	CD63MA-BX	CD63MA-MX	CD63DA-MX
M63	CD63MR-BX	CD63MR-MX	CD63DR-MX
3/8"	CD09NA-BX	CD09NA-MX	-
3/8"	CD09NR-BX	CD09NR-MX	-
1/2"	CD13NA-BX	CD13NA-MX	-
1/2"	CD13NR-BX	CD13NR-MX	-
1/2"	CD16NA-BX	-	-
1/2"	CD16NR-BX	-	-
3/4"	CD21NA-BX	CD21NA-MX	-
3/4"	CD21NR-BX	CD21NR-MX	-
1"	CD29NA-BX	CD29NA-MX	-
1"	CD29NR-BX	CD29NR-MX	-
1 1/4"	CD29NA-BX	-	-
1 1/4"	CD29NR-BX	-	-
1 1/2"	CD36NA-BX	-	-
1 1/2"	CD36NR-BX	-	-

Ask Your Sales Representative About the New Exios Products



New Exios A2F for Non-Armored Cable

CABLE TIES

CT CABLE TIES

Hoffman Products' CT Cable Ties are quality products designed to provide application either by hand or tool. These self adjusting, self locking ties provide a permanent harness. They are designed to ensure a secure bundling system and are resistant to shock, vibration, petrochemicals and environmental extremes.

CT Cable Ties are a one-piece molded mechanism with no metal barbs. They combine outstanding physical properties such as light weight, abrasion resistance, toughness, high tensile strength, exceptional dielectric properties and resilience to common solvents, alkalies, dilute acids, oils and greases.

- **Specifications:** Type 6/6 Nylon meets the UL94 V-2 flammability rating, self-extinguishing.

CT Cable Ties — Standard



Part No.	Length (in)	Width (in)	Tensile Strength (lbs)	Pack Qty
CT4S	4.0	0.1	18	100*
CT5.5S	5.5	0.1	18	100*
CT6.1S	6.1	0.1	18	100*
CT7.7S	7.7	0.1	18	100*
CT5.5I	5.5	0.14	40	100*
CT7.1I	7.1	0.14	40	100*
CT8I	8.0	0.14	40	100*
CT11.8I	11.8	0.14	40	100*
CT14.5I	14.5	0.14	40	100*
CT4.7	4.7	0.19	50	100*
CT7.3	7.3	0.19	50	100*
CT11.3	11.3	0.19	50	100*
CT14.5	14.5	0.19	50	100*
CT19.7	19.7	0.19	50	100*
CT3HD	3.0	0.3	120	100
CT8HD	8.0	0.3	120	100
CT11.5HD	11.5	0.3	120	100
CT14.5HD	14.5	0.3	120	100
CT17.7HD	17.7	0.3	120	100
CT17EHD	17.0	0.35	175	100
CT20.7EHD	20.7	0.35	175	100
CT27.6EHD	27.6	0.35	175	100
CT31.4EHD	31.4	0.35	175	100
CT36EHD	36.0	0.35	175	100
CT48EHD	48.0	0.35	175	100

All part numbers are available in **black**. Add **B** to the end of the part number.

*Also available in **1000 pack**. Add **M** to the end of the part number. For example: **CT4SB/M = 1000 pack in black**.

OTHER CT CABLE TIES

Black cable ties have the same resistance to petrochemicals as our 6/6 nylon cable ties, but are also UV protected, making black cable ties ideal for your outdoor applications. If corrosion is a concern, Hoffman Products' Stainless Steel CT Cable Ties offer a higher level of durability. You can save time and increase efficiency by using releasable cable ties. Hoffman Products' Releasable CT Cable Ties offer all the advantages of standard cable ties, plus the ability to remove the cable tie without cutting, which makes the cable tie reusable.

CT Cable Ties – Releasable

Part No.	Length (in)	Width (in)	Tensile Strength (lbs)	Pack Qty
RCT8	8.0	0.19	50	100
RCT10	10.0	0.19	50	100
RCT11.7	11.7	0.19	50	100
RCT14.5	14.5	0.19	50	100
RCT9.4XHD	9.4	0.51	250	100
RCT11.3XHD	11.3	0.51	250	100
RCT15.4XHD	15.4	0.51	250	100
RCT19.6XHD	19.6	0.51	250	100
RCT23.5XHD	23.5	0.51	250	100
RCT27.6XHD	27.6	0.51	250	100
RCT31.6XHD	31.6	0.51	250	100

CT Cable Ties – Mounting Head

Part No.	Length (in)	Width (in)	Tensile Strength (lbs)	Pack Qty
MHT5.9I	5.9	0.14	40	100
MHT8I	8.0	0.14	40	100
MHT11.8	11.8	0.19	50	100
MHT14.5	14.5	0.19	50	100
MHT6HD	6.0	0.3	120	100
MHT8.3HD	8.3	0.3	120	100
MHT11.8HD	11.8	0.3	120	100
MHT14.5HD	14.5	0.3	120	100

CT Cable Ties – Marker

Part No.	Length (in)	Width (in)	Tensile Strength (lbs)	Pack Qty
MKCT4S/M	4.0	0.1	18	100
MKCT8S/M	8.0	0.1	18	100
MKCT7.8/M	7.8	0.19	50	100
MKCT10.6	10.6	0.19	50	100
MKCT11.8	11.8	0.19	50	100
MKCT14.5	14.5	0.19	50	100

CABLE TIES

CT Cable Ties — *Beaded*



Part No.	Length (in)	Width (in)	Tensile Strength (lbs)
BCT4.2S(8)	4.2	0.09	8
BCT5.7S(30)	5.7	0.07	30
BCT7.1I	7.1	0.14	40
BCT8.9I	8.9	0.14	40

Push Mounts



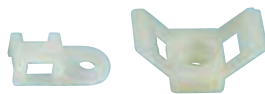
Part No.	Length (in)	Width (in)	Tensile Strength (lbs)
PMCT6.1S(30)	6.1	0.14	30
PMCT7.9	7.9	0.19	30

Mounts



Part No.	Length (in)	Width (in)	Height (in)
MT3/4	0.75	0.75	0.14
MT3/4B	0.75	0.75	0.14
MT1	1.1	1.1	0.16
MT1B	1.1	1.1	0.16

Saddle Mounts



Part No.	Length (in)	Width (in)	Height (in)
SMT1	0.59	0.39	0.28
SMT2	0.91	0.63	0.36
SMT3	0.75	0.37	0.20

Stainless Steel Self Locking



Part No.	Length (in)	Width (in)	Tensile Strength (lbs)
STCT5HD	5.0	0.18	100
STCT7.9HD	7.9	0.18	100
STCT10.5HD	10.5	0.18	100
STCT14.2HD	14.2	0.18	100
STCT20.4HD	20.4	0.18	100
STCT26.8HD	26.8	0.18	100
STCT26.8HD	26.8	0.18	100
STCT42HD/25	42.0	0.18	100
STCT1200HD/25	47.0	0.18	100
STCT5XHD/50	5.0	0.31	250
STCT7.9XHD/50	7.9	0.31	250
STCT10.5XHD/50	10.5	0.31	250
STCT14.2XHD/50	14.2	0.31	250
STCT20.4XHD/50	20.4	0.31	250
STCT26.8XHD/50	26.8	0.31	250
STCT33XHD/50	33.0	0.31	250
STCT42XHD/25	42.0	0.31	250
STCT47XHD/25	47.0	0.31	250

Cable Clamps



Part No.	Length (in)	Width (in)
CTCC1/8	0.20	0.51
CTCC3/16	0.20	0.41
CTCC1/4	0.19	0.37
CTCC5/16	0.19	0.37
CTCC3/8	0.19	0.37
CTCC1/2	0.19	0.49
CTCC5/8	0.19	0.47
CTCC3/4	0.19	0.47
CTCC1	0.19	0.47
CTCC1.06	0.19	0.47
CTCC1.33	0.19	0.47
CTCC1.5	0.19	0.47

WIRE BUNDLING

WIRE BUNDLING PRODUCTS

Spiral Wrap and Split Loom Tubing were designed to hold and protect cables, harnesses and hoses—allowing flexibility while providing secure bundling. The heavy duty wall thickness provides greater resistance to abrasions and vibrations. The UV black polyethylene material provides excellent outdoor ultraviolet light protection. Tubing is quick and easy to install.

Split Loom Tubing



Part No.	Description	O.D. (in)
SL-1/4B-00	1/4" Black Polyethylene	0.378
SL-3/8B-00	3/8" Black Polyethylene	0.535
SL-1/2B-00	1/2" Black Polyethylene	0.675
SL-5/8B-00	5/8" Black Polyethylene	0.815
SL-3/4B-00	3/4" Black Polyethylene	0.933
SL-1B-00	1" Black Polyethylene	1.114
SL-1.25B-00	1.25" Black Polyethylene	1.524
SL-1.5B-00	1.5" Black Polyethylene	1.866

Spiral Wrap Tubing



Part No.	Description	O.D. (in)
SW-1/8B-00	1/8" UV Black Polyethylene	0.061
SW-3/16-00	3/16" Natural Polyethylene	0.127
SW-3/16B-00	3/16" UV Black Polyethylene	0.127
SW-1/4-00	1/4" Natural Polyethylene	0.160
SW-1/4B-00	1/4" UV Black Polyethylene	0.160
SW-3/8-00	3/8" Natural Polyethylene	0.271
SW-3/8B-00	3/8" UV Black Polyethylene	0.271
SW-1/2-00	1/2" Natural Polyethylene	0.375
SW-1/2B-00	1/2" UV Black Polyethylene	0.375
SW-5/8-00	5/8" Natural Polyethylene	0.500
SW-5/8B-00	5/8" UV Black Polyethylene	0.500
SW-3/4-00	3/4" Natural Polyethylene	0.620
SW-3/4B-00	3/4" UV Black Polyethylene	0.620
SW-1-00	1" Natural Polyethylene	0.840
SW-1B-00	1" UV Black Polyethylene	0.840



Filter Fans — H-FFP Series

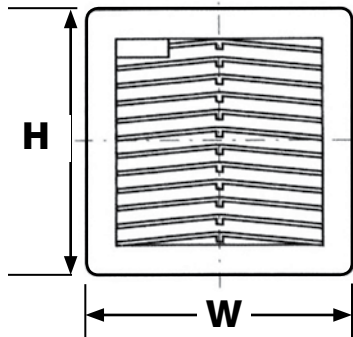
Part No.	Dimensions — in (mm)	Voltage
H-FFP H12-115F/G35	5.91" x 5.91" x 2.80" (150 x 150 x 71)	115 VAC
H-FFP H12-230F/G35	5.91" x 5.91" x 2.80" (150 x 150 x 71)	230 VAC
H-FFP H13-115F/G35	8.03" x 8.03" x 3.86" (204 x 204 x 98)	115 VAC
H-FFP H13-230F/G35	8.03" x 8.03" x 3.86" (204 x 204 x 98)	230 VAC
H-FFP H15-115F/G35	9.84" x 9.84" x 4.76" (250 x 250 x 121)	115 VAC
H-FFP H15-230F/G35	9.84" x 9.84" x 4.76" (250 x 250 x 121)	230 VAC
H-FFP H20-115F/G35	12.80" x 12.80" x 6.34" (325 x 325 x 124)	115 VAC
H-FFP H20-230F/G35	12.80" x 12.80" x 6.34" (325 x 325 x 124)	230 VAC

Filter Replacements Available.

FILTER FANS

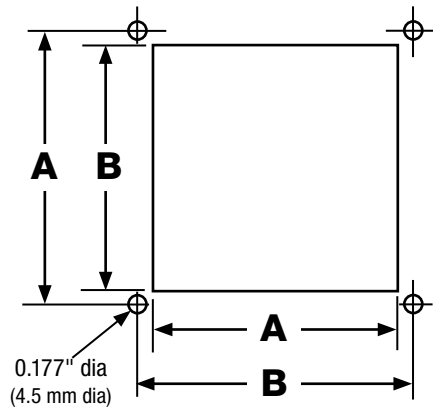
Compact, low external profile fans that install quickly without screws. Frames lock into place and have a sealing gasket. Available in 115 VAC or 230 VAC with a cubic feet per minute (CFM) range of 36 (61) to 341 (580). UL approved.

- Available in standard flow (from outside to inside) and reverse flow (available upon request)
- Integral sealing gasket; Protection IP54, Nema 12 according to UL standard 508
- Operational safety; replacement of filter can be done from outside the enclosure without tools
- DC voltages and larger CFM available upon request



Fan Size

Series	H — in (mm)	W — in (mm)
12	5.91" (150)	5.91" (150)
13	8.03" (204)	8.03" (204)
15	9.84" (250)	9.84" (250)
20	12.80" (325)	12.80" (325)

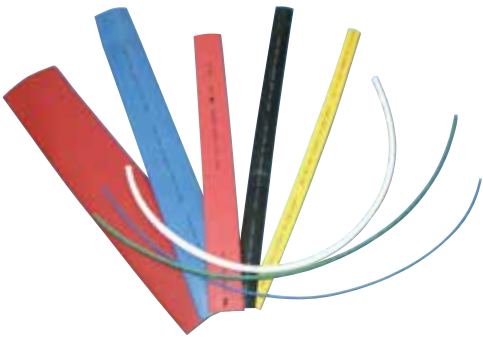


Mounting Cut-Out

Series	A — in (mm)	B — in (mm)
12	4.92" (125 ^{+1.5})	5.16" (131)
13	6.97" (177 ^{+1.5})	7.30" (185)
15	8.78" (223 ^{+1.5})	9.06" (230)
20	11.45" (291 ^{+1.5})	11.89" (302)

HEAT SHRINK TUBING

Hoffman Products' tubing is designed to environmentally seal and protect electrical and power distribution applications as well as connector to cable transitions. Available with an adhesive lining to create a strong bond between the cable jacket and the tube—specifically for underground and aerial applications. It is available in a variety of colors and sizes. Made of premium grade flame retardant polyolefin material.



STANDARD POLYOLEFIN TUBING

Standard polyolefin tubing is designed to protect inline components, splices and disconnects. Used for jacketing, wire bundles, light duty harnesses and identifying or color coding wire, cables and terminal components. Standard colors available are black, red, blue, yellow, white, green and clear. **Call for more colors.**

- Operating Temperature: -55°C to +125°C (-67°F to 257°F)
- Minimum Shrink Temperature: 70°C (158°F)
- Certifications: UL224 125°C VW1: RoHS Compliant
- Voltage: 600V
- Standard colors: black, red, blue, yellow, white, green and clear

Standard Polyolefin Tubing — 2:1 Shrink Ratio

Part No.	INSIDE DIAMETER				Nominal Recovered Wall Thickness After Heat		Reel Qty (ft)	4 Ft Qty (pcs)	6 In Qty (pcs)
	Min Expanded As Supplied		Max Recovered After Heat						
HSTB1/16	1.50 mm	0.059 in	0.65 mm	0.026 in	0.35 mm	0.014 in	100	25	36
HSTB1/8	3.00 mm	0.118 in	1.50 mm	0.059 in	0.40 mm	0.016 in	100	25	28
HSTB3/16	4.50 mm	0.177 in	2.30 mm	0.091 in	0.50 mm	0.020 in	100	25	24
HSTB1/4	6.00 mm	0.230 in	3.00 mm	0.118 in	0.55 mm	0.022 in	100	25	20
HSTB3/8	9.00 mm	0.354 in	4.50 mm	0.177 in	0.60 mm	0.024 in	100	25	16
HSTB1/2	12.00 mm	0.472 in	6.00 mm	0.236 in	0.60 mm	0.024 in	100	5	14
HSTB3/4	18.00 mm	0.709 in	9.00 mm	0.354 in	0.80 mm	0.031 in	50	5	12
HSTB1	25.00 mm	0.984 in	12.50 mm	0.492 in	0.90 mm	0.035 in	50	5	8
HSTB1.5	40.00 mm	1.575 in	20.00 mm	0.787 in	1.00 mm	0.039 in	50	5	5

Custom cut pieces and large reels available, contact sales@hoffmanproducts.com.

HEAT SHRINK TUBING

DUAL WALL ADHESIVE LINED TUBING

Designed to environmentally seal and protect electrical and power distribution applications and connector-to-cable transitions. Standard colors available are black, red, blue, yellow, white, green and clear. **Call for additional colors.**

- Operating Temperature: -55°C to +125°C (-67°F to 257°F)
- Certifications: UL224 125°C VW1
- Voltage: 600V

MEDIUM WALL ADHESIVE LINED TUBING

This tubing has a hot melt adhesive liner which creates a strong bond between the cable jacket and the tube. Designed for use in aerial and underground applications. **Available in black only. Mil spec available.**

- Operating Temperature: -55°C to +110°C (-67°F to 230°F)
- Certifications: UL224 125°C VW1
- Voltage: 600V

Dual Wall Adhesive Lined Tubing — 3:1 Shrink Ratio

Part No.	INSIDE DIAMETER				NOMINAL RECOVERED WALL THICKNESS				Reel Qty (ft)	4 Ft Qty (pcs)	6 In Qty (pcs)
	Min Expanded As Supplied		Max Recovered After Heat		Total Wall After Heat		Adhesive Wall After Heat				
HSTBD1/8	3.20 mm	0.126 in	1.00 mm	0.039 in	0.95 mm	0.037 in	0.35 mm	0.014 in	500	25	28
HSTBD3/16	4.80 mm	0.189 in	1.60 mm	0.063 in	1.10 mm	0.043 in	0.40 mm	0.016 in	300	25	24
HSTBD1/4	6.40 mm	0.252 in	2.20 mm	0.087 in	1.20 mm	0.047 in	0.45 mm	0.018 in	300	25	20
HSTBD5/16	7.90 mm	0.311 in	2.70 mm	0.106 in	1.35 mm	0.053 in	0.50 mm	0.020 in	250	25	18
HSTBD3/8	9.50 mm	0.374 in	3.20 mm	0.126 in	1.45 mm	0.057 in	0.50 mm	0.020 in	150	25	16
HSTBD1/2	12.70 mm	0.500 in	4.20 mm	0.165 in	1.70 mm	0.067 in	0.50 mm	0.020 in	100	5	14
HSTBD3/4	19.10 mm	0.752 in	6.30 mm	0.248 in	2.00 mm	0.079 in	0.55 mm	0.022 in	100	5	12
HSTBD1	25.40 mm	1.000 in	8.50 mm	0.335 in	2.10 mm	0.083 in	0.55 mm	0.022 in	100	5	8
HSTBD1.5	39.00 mm	1.535 in	13.50 mm	0.531 in	2.40 mm	0.094 in	0.60 mm	0.024 in	50	5	5

Custom cut pieces available, contact sales@hoffmanproducts.com.

Medium Wall Adhesive Lined Tubing — 3:1 Shrink Ratio

Only available in 4' lengths.

Part No.	INSIDE DIAMETER				Nominal Recovered Wall Thickness After Heat	
	Min Expanded As Supplied		Max Recovered After Heat			
HSTM12	12.0 mm	0.472 in	3.0 mm	0.118 in	2.0 mm	0.079 in
HSTM22	22.0 mm	0.866 in	6.0 mm	0.236 in	2.5 mm	0.098 in
HSTM28	28.0 mm	1.102 in	6.0 mm	0.236 in	2.5 mm	0.098 in
HSTM33	33.0 mm	1.299 in	8.0 mm	0.315 in	2.5 mm	0.098 in
HSTM40	40.0 mm	1.575 in	12.0 mm	0.472 in	2.5 mm	0.098 in
HSTM55	55.0 mm	2.165 in	16.0 mm	0.630 in	2.7 mm	0.106 in
HSTM65	65.0 mm	2.559 in	19.0 mm	0.748 in	2.8 mm	0.110 in
HSTM75	75.0 mm	2.953 in	20.0 mm	0.787 in	3.0 mm	0.118 in
HSTM95	95.0 mm	3.740 in	25.0 mm	0.984 in	3.0 mm	0.118 in
HSTM115	115.0 mm	4.528 in	34.0 mm	1.339 in	3.0 mm	0.118 in

SELF-FUSING SILICONE TAPE

Self-Fusing Silicone Tape is specifically designed to resist oil, water, ozone and many chemicals. It can be used for all electrical connections on irregular shapes or uneven surfaces. The tape fully bonds to itself in 24 hours at room temperature and has an operating temperature range of -50°C to 150°C (-58°F to 302°F). The Self-Fusing Silicone Tape base material is cured, self-fusing silicone rubber. It is made in the U.S.A.



APPLICATIONS

- Motor lead insulation
- Repair damaged wires and seal electrical terminations
- Wire bundling — cable management
- Re-grip tool handles
- Repair leaky pipes and damaged hoses
- Bus bar insulation
- Protect terminations from oil, dust and water contamination
- Temporary hose repair
- Emergency marine repair of electrical wires and broken lines
- Jumper cable grip insulation
- Emergency radiator hose repairs
- All purpose repair tape

SHELF LIFE

60 months from date of receipt at 70°F. **NOTE:** Shelf life is defined as the duration of time for which the product will meet the physical characteristics outlined on this page. It does not guarantee the product's usefulness in all applications.

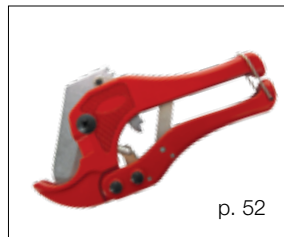
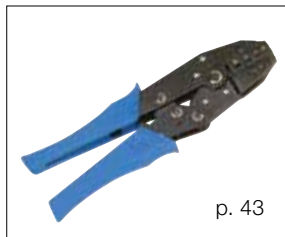
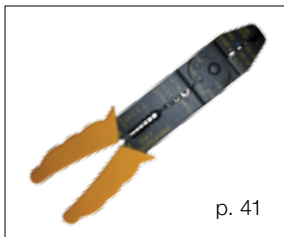
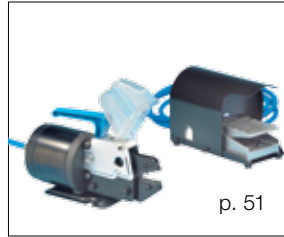
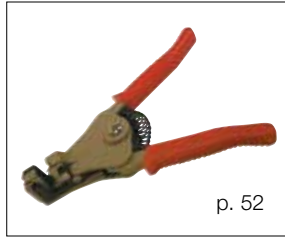
Self-Fusing Silicone Tape

Part No.	Nominal Thickness (in)	Nominal Width (in)	Nominal Length (ft)	Wrap Color	Dielectric Strength Volts per Mil
HG40	0.012	1.0	30	Gray	881

Self-Fusing Silicone Tape — Product Properties

Property	Value	Method
Tensile Strength PSI	1200	ASTM D 412
Elongation %	612	ASTM D 412
Durometer Shore A	50	ASTM D 2240
Dielectric Strength Volts/Mil	881	ASTM D 149
Operating Temperature	-50°C to +150°C	-

TOOLS TABLE OF CONTENTS



38 TOOL SELECTOR CHART

41 HAND TOOLS — PLIER TYPE

42 HAND TOOLS — RATCHET TYPE

46 HYDRAULIC HAND TOOLS

49 CRIMPING TOOLS

52 WIRE CUTTERS & STRIPPERS



RELY ON HOFFMAN PRODUCTS FOR:

- ☑ Deep Inventory
- ☑ Low Minimum Order Requirements
- ☑ Customized Packaging Options
- ☑ Exceptional Service

9600 VALLEY VIEW RD, MACEDONIA, OH 44056 • PHONE: 800-645-2014 • FAX: 866-896-3017
EMAIL: SALES@HOFFMANPRODUCTS.COM • WEBSITE: WWW.HOFFMANPRODUCTS.COM



HOFFMAN PRODUCTS
A TPC WIRE & CABLE CORP. BRAND

TOOL SELECTOR CHART

HOW TO SELECT THE PROPER CRIMPING TOOL

1. Locate the terminal style you wish to crimp, i.e., non-insulated terminal, insulated flag disconnect, etc.
2. Determine the wire size you wish to crimp.
3. Once the terminal style and wire sizes are determined, look across the tool selector chart and choose the appropriate crimping tool for your application, e.g., hand tool, pneumatic tool or hydraulic tool.
4. For information on specific tools, please contact sales@hoffmanproducts.com or **1-800-645-2014**.

Insulated Terminals & Connectors

HAND TOOLS				HYDRAULIC TYPE							PNEUMATIC (AIR) TYPE						
Wire Size	Plier Type	Ratchet Type	Lever Type	Hand Pumped Tool Part #		Power Activated Crimping Head Part #					Pneumatic Tool Part # Crimping dies are ordered separately & listed below						
				608	604	603	607	609	610	611T	ACS300	AC3N	AC5N	YA1	YA2	YA4	YA5
26-22		YNT2622												AD200F	AD600		
22-16	Y801 Y401	YN2214 YNM112 YNM126 YNM2210 YNM2210S YNT2216											AC32	AC3	AD201F	AD601F	AD911F
16-14	Y801 Y401	YN2214 YNM112 YNM126 YNM2210 YNM2210S YNT1614											AC32	AC4	AD202F	AD602F	AD9121F
12-10	Y801 Y401	YNM126 YNM2210 YNM2210S YNT1210S											AC32	AC5			AD913F
8		YNM85	111						61001 61002				AC38				
6		YNM86	111						61003 61004				AC38				
4			111						61005 61006								
2			111						61007 61008								

Insulated Male and Female Disconnects

				ACS300	AC3N	AC5N	YA1	YA2	YA4	YA5						
22-16	Y801 Y401	YN2214 YNM112 YNM126 YNM2210 YNM2210S YNT2216									AC32 or AC33 (Single Crimp)	AC7A	AD201F	AD601F	AD911F	
16-14	Y801 Y401	YN2214 YNM112 YNM126 YNM2210 YNM2210S YNT1614									AC32 or AC33 (Single Crimp)	AC4	AD202F	AD602F	AD912F	
12-10	Y801 Y401	YNM126 YNM2210 YNM2210S YNT1210S									AC32 or AC33 (Single Crimp)	AC5			AD13F	

TOOL SELECTOR CHART

Insulated Terminals & Connectors — Continued

HAND TOOLS				HYDRAULIC TYPE							PNEUMATIC (AIR) TYPE						
Wire Size	Plier Type	Ratchet Type	Lever Type	Hand Pumped Tool Part #		Power Activated Crimping Head Part #					Pneumatic Tool Part # Crimping dies are ordered separately & listed below						
				608	604	603	607	609	610	611T	ACS300	AC3N	AC5N	YA1	YA2	YA4	YA5

Insulated Flag Disconnects

22-14	FG6100	YNG2214											AC36				
16-14	FG6100	YNG2214											AC36				

Insulated Closed End Connectors

											ACS300	AC3N	AC5N	YA1	YA2	YA4	YA5
22-18		YS7 YS2216 YS2210 AK25									ADCEAB	AC33	AC7A	AD301	AD801	AD931	
16-14		YS7 YS1614 YS2210 AK25									ADCEAB OR ADCEBD	AC33	AC7A	AD302	AD802	AD932	
12-10		YS7 YS1210 YS2210 AK25									ADCEBD	AC34	AC7A	AD303	AD803	AD933	
8		YS8S YNM86 YS9 AK25										AC38				AD934	

Non-Insulated Terminals & Connectors

Non-Insulated with a Copper Sleeve

											ACS300	AC3N	AC5N	YA1	YA2	YA4	YA5
22-16		YDT2216														AD921F	
16-14		YDT1614														AD922F	
12-10		YDT1210S														AD923F	

Non-Insulated Tubular Lugs

											ACS300	AC3N	AC5N	YA1	YA2	YA4	YA5
8-250MCM			115R														
2-500MCM			115H														

Non-Insulated Open Barrel Quick Connects

											ACS300	AC3N	AC5N	YA1	YA2	YA4	YA5
26-22		YHF200												F200			
22-16	PF2010	YHF200												F200			
16-14		YOM2210															
12-10	PF2010	YOM2210												F200			

Ferrules

											ACS300	AC3N	AC5N	YA1	YA2	YA4	YA5
26-10			YFE26														
22-12			YFE2212									AC04F					
10-6			YFE106									AC39					
8-4			YFE84									AC35F					

Non-Insulated Flag Terminals

											ACS300	AC3N	AC5N	YA1	YA2	YA4	YA5
22-16		YG2216 YG2014														AD941	
16-14	FG6100	YG1614 YG2014 YG1410														AD942	
12-10	FG6100	YG1210 YG1410														AD944	
8		YG8S														AD945	
6-1/0		YG8S														AD945	

TOOL SELECTOR CHART

Non-Insulated Terminals & Connectors — Continued

HAND TOOLS				HYDRAULIC TYPE						PNEUMATIC (AIR) TYPE							
Wire Size	Plier Type	Ratchet Type	Lever Type	Hand Pumped Tool Part #		Power Activated Crimping Head Part #					Pneumatic Tool Part # Crimping dies are ordered separately & listed below						
				608	604	603	607	609	610	611T	ACS300	ACS3N	AC5N	YA1	YA2	YA4	YA5
26-22		YHT2622												AD100	AD500		
22-16	Y801 Y401	YHM61 YHM88 YHM226 YHM228 YHT2210											AC1	AD101	AD501	AD900	
16-14	Y801 Y401	YHM61 YHM88 YHM226 YHM228 YHT2210										AC31	AC1	AD101	AD501	AD900	
12-10	Y801 Y401	YHM61 YHM88 YHM124 YHM226 YHM228 YHT2210										AC31	AC1	AD101	AD501	AD900	
8		YHM61 YHM88 YHM124 YHM226 YHM228 YHT8S	AK38 111 AK150 115R	60801 60802		60301 60313	60601 60602			60801 60802						AD901	AD951
6		YHM88 YHM124 YHM226 YHT14S	AK38 AK60R1 AK150 111 115R	60803 60802		60302 60313	60603 60602			60803 60802						AD902	AD952
4		YHM124	AK38 AK60R1 AK150 111 115R	60804 60805		60303 60314	60604 60605			60804 60805							AD953
2			AK38 AK60R1 AK150 111 115R	60806 60805		60304 60314	60606 60605			60806 60805							AD954
1/0			AK60R1 AK150 115R	60807 60808		60305 60314	60607 60608	60901 60902		60807 60808							AD955
2/0			AK60R1 AK150 115R	60809 60808		60306 60315		60903 60902		60807 60808							
3/0			AK60R1 AK150 115R	60810 60811		60307 60315		60904 60905		60810 60811							
4/0			AK150 115R	60812 60811		60308 60315		60906 60905		60812 60811							
300MCM			AK150 115R	60813 60814		60309 60316		60907 60908		60813 60814							
350MCM						60310 60316		60909 60908									
400MCM						60311 60316		60910 60911									
600MCM						60312 60316		60912 60913									



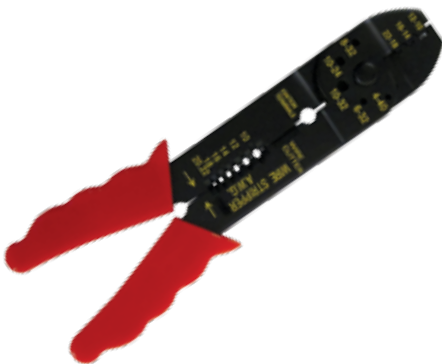
Y801 PLIER TYPE

- Crimps 22-16, 16-14, 12-10 Non-Insulated and Insulated Terminals
- Wire Cutter — Cuts wire cleanly and quickly
- Insulation Stripper — Strips sizes 22-10 AWG
- Bolt Cutter — Cuts 5 popular bolt sizes: 4-40, 6-32, 8-32, 10-24, 10-32
- Thread Chaser — cleans and chases threads for bolt sizes above
- Professional Quality — made from milled steel to ensure accurate operation and long life as opposed to stamped tools
- Comfort Vinyl Cushion Grip Handles — alleviates operator hand fatigue
- Weight: 8 oz and Length: 9 in



Y401 PLIER TYPE

- Crimps 22-16, 16-14, 12-10 Non-Insulated and Insulated Terminals
- Wire Cutter — cuts wire cleanly and quickly
- Insulation Stripper — Strips 22-10 AWG
- Bolt Cutter — cuts 5 popular bolt sizes 4-40, 6-32, 8-32, 10-24, 10-32
- Thread Chaser — cleans and chases threads for bolt sizes above
- Molded Vinyl Grip Handles
- Weight: 7 oz and Length: 8 in



PF2010 PLIER TYPE

- Crimps 22-16, 16-14, 12-10 Non-Insulated and Insulated Terminals
- Wire Cutter — cuts wire cleanly and quickly
- Insulation Stripper — Strips 22-10 AWG
- Bolt Cutter — cuts 5 popular bolt sizes 4-40, 6-32, 8-32, 10-24, 10-32
- Thread Chaser — cleans and chases threads for bolt sizes above
- Molded Vinyl Grip Handles
- Weight: 7 oz and Length: 8 in



FG6100 PLIER TYPE

- Crimps Non-Insulated Flag Disconnects 22-10
- Molded Vinyl Grip Handles
- Bolt Cutter — for sizes: 4-10, 6-32, 8-32, 10-24, 10-32
- Wire Stripper — for sizes 22-8 AWG

HAND TOOLS

RATCHET TYPE

These quality tools are designed for professional use. All ratchet tools provide a “controlled crimp”. The crimp cycle must be completed or the tool will not release. This prevents over crimping or under-crimping of the terminal or connector. All tools have spring loaded handles which provide automatic release after the crimp cycle has been completed.

YHT TYPE

Strong durable slim handled tools with a baked enamel finish. Each has a high polished nest and indenter for precision quality crimping.

Part No.	AWG Range	Length (in)	Weight (lbs)
YHT2622	26-22	10.5	1.0
YHT2210	22-10	12.0	1.0
YHT8S	8	12.0	2.0
YHT14S	6	12.0	2.0



YHM TYPE

The YHM type tools are designed with multiple dies to crimp a large range of terminal sizes. Type 1 features strong plastic handles that are easy on the hands, while Type 2 has soft vinyl grip handles.

Type 1 Part No.	AWG Range	Length (in)	Weight (lbs)
YHM228	22-8	10.0	1.5
YHM124	12-4	13.98	1.77



Type 1

Type 2 Part No.	AWG Range	Length (in)	Weight (lbs)
YHM61	22-8	10.25	1.0
YHM88	16-6	11.25	1.0



Type 2



FOR NON-INSULATED TERMINALS

Strong, durable, slim handled tools with a black enamel finish.

Part No.	AWG Range	Length (in)	Weight (lbs)
YG2216	22-16	10.75	1
YG1614	16-14	10.75	1
YG1210	12-10	10.75	1
YG8S	8	12.25	2



Light, easy ratchet mechanism with plastic grip handles assures a good crimp on all flag terminals.

Part No.	AWG Range	Length (in)	Weight (lbs)
YG2014	22-14	9.0	1.1
YG1410	14-10	9.0	1.1



FOR NON-INSULATED TERMINALS WITH COPPER SUPPORT SLEEVE

Strong, durable slim handled tool with spring loaded wire stop tab which automatically adjusts to different size and shape of terminals. Adjustable support sleeve setting feature: (#1 small OD, #2 for medium OD, #3 for large OD.)

Part No.	AWG Range	Length (in)	Weight (lbs)
YDT2216	22-16	10.75	1.25
YDT1614	16-14	10.75	1.25
YDT1210	12-10	13.00	2.25



FOR NON-INSULATED OPEN BARREL CONNECTORS

Light, easy ratchet mechanism with plastic grip handles assures a good double crimp on all open barrel connectors. Crimps both the stripped wire and the insulation support in one operation.

Part No.	AWG Range	Length (in)	Weight (lbs)
YOM2210	22-10	10.0	1.0



Strong, durable slim handled tool with vinyl grip handle. Crimps both the stripped wire and insulation support in one operation.

Part No.	AWG Range	Length (in)	Weight (lbs)
YHF200	22-14	10.75	1.0

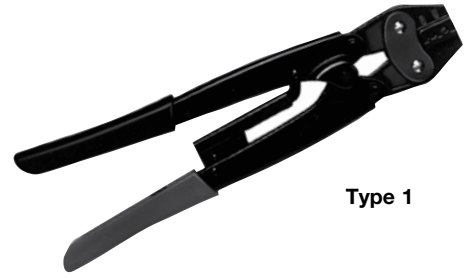
HAND TOOLS

RATCHET TYPE

YNM TYPE FOR INSULATED TERMINALS

The YNM tools produce a controlled double crimp, securing a perfect crimp on both the barrel and insulation part of the terminal. Nickel chrome plated molybdenum steel jaws with two crimp sections. Type 1 has color coded handles while Type 2 has color coded dies to assure using the appropriate die for each wire size terminal.

Type 1 Part No.	AWG Range	Length (in)	Weight (lbs)	Die Color
YNM112	22-14	11.0	1.0	Red/Blue
YNI2214	22-14	10.75	1.1	Red/blue
Type 2 Part No.	AWG Range	Length (in)	Weight (lbs)	Die Color
YNM126	22-10	9.0	1.25	Red/Blue/Yellow
YNM2210	22-10	10.0	1.5	Red/Blue/Yellow
Single Crimp				
YNM2210D	22-10	10.0	1.5	Red/Blue/Yellow
YNM86	8-6	9.0	1.1	—



Type 1



Type 2

YNT TYPE FOR INSULATED TERMINALS

The YNT tools produce a controlled double crimp. A spring loaded wire stop tab automatically adjusts to different sizes and shapes of terminals. Tab prevents wire from protruding out of the terminal barrel while crimping. Handles are color coded for easy identification of wire ranges.

Part No.	AWG Range	Length (in)	Weight (lbs)	Die Color
YNT2622	26-22	10.75	1.25	Yellow
YNT2216	22-16	10.75	1.25	Red
YNT1614	16-14	10.75	1.25	Blue
YNT1210S	12-10	13.0	2.25	Yellow



FOR FEMALE INSULATED FLAG DISCONNECTS

The unique nest design holds the terminal in place while inserting and crimping the wires. Dies for both 22-16 AWG and 16-14 AWG are in one tool with color coded handles and dies.

Part No.	AWG Range	Length (in)	Weight (lbs)
YNG2214	22-16, 16-14	9.0	1.1875





Type 1



Type 2

YS TYPE TOOLS FOR CLOSED END CONNECTS

Specially designed dies in each model assure the user of a superior crimp with an extensive variety of wire combinations. Type 1 has green vinyl cushion handles while Type 2 is made with durable plastic handles and contains multiple dies with color coded markings.

Type 1 Part No.	AWG Range	Length (in)	Weight (lbs)
YS2216	22-16	10.75	1.0
YS1614	16-14	10.75	1.0
YS1210	12-10	10.75	1.0
YS8S	8	12.25	2.0
YS7	22-10	10.75	1.0
Type 2 Part No.	AWG Range	Length (in)	Weight (lbs)
YS9	8	11.81	1.15
YS2210	22-10	10.0	1.5



FOR FERRULES

Multi-nested tools for crimping a wide range of ferrules. Easy ratchet mechanism assures a complete crimp each time.

Part No.	AWG Range	Length (in)	Weight (lbs)
YFE26	26-10	8.1	0.83
YFE2212	22-12	10.0	1.5
YFE84	8-4	10.0	1.5
YFE106	10-6	10.0	1.5



RELY ON HOFFMAN PRODUCTS FOR:

- ✓ Deep Inventory
- ✓ Low Minimum Order Requirements
- ✓ Customized Packaging Options
- ✓ Exceptional Service

HYDRAULIC HAND TOOLS

HAND HYDRAULIC FOR NON-INSULATED TERMINALS AND CONNECTORS

These tools are portable, manually operated, hydraulic presses for installing terminals and connectors ranging in the larger sizes listed below. Tools develop up to 16 tons of power. Depth of indentation is automatically controlled to avoid over and undercrimping. Both are supplied with a carrying case.

604 HAND TOOL

This tool has a rotating swivel head nest and can be operated either vertically or horizontally. The unique rotating head provides a compact tool capable of crimping a wide range of large size terminals. Perfect for field work. Comes with a convenient heavy plastic carrying case. **Length:** 20 in **Weight:** 9.5 lbs

Wire Size	Nest Wheel Wire Range	Identor Wire Range
6	6-2	6
4	6-2	4
2	6-2	2-2/0
1/0	1/0-2/0	2-2/0
2/0	1/0-2/0	2-2/0
3/0	3/0-4/0	3/0-4/0
4/0	3/0-4/0	3/0-4/0



608 HAND TOOL

This tool has interchangeable nests and indentors. Dies can be quickly interchanged for different wire size operations. The tool comes with a heavy metal carrying case. Dies are ordered separately. **Length:** 20 in **Weight:** 17.5 lbs

Wire Size	Die Nest	Die Identor
8	608-01	608-02
6	608-03	608-02
4	608-04	608-05
2	608-06	608-05
1/0	608-07	608-08
2/0	608-09	608-08
3/0	608-10	608-11
4/0	608-12	608-11
300MCM	608-13	608-14



HYDRAULIC HAND TOOLS

POWER ACTIVATED FOR NON-INSULATED TERMINALS AND CONNECTORS

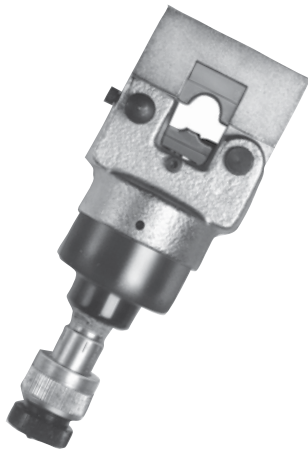
These crimping heads are designed for large size terminals and connectors in ranges from 8 AWG up to 600MCM. They supply a superior “O” type crimp for maximum conductivity and tensile strength. The heads are supplied with a metal carrying case. Dies are sold separately.



603 HYDRAULIC HEADS

Weight: 18 lbs

Wire Size	Nest No.	Identor No.
8	60301	60313
6	60302	60313
4	60303	60314
2	60304	60314
1/0	60305	60314
2/0	60306	60315
3/0	60307	60315
4/0	60308	60315
300MCM	60309	60316
450MCM	60310	60316
400MCM	60311	60316
600MCM	60312	60316



607 HYDRAULIC HEADS

Maximum Capacity: 13M lbs **Weight:** 4 lbs

Pressure: 7700 psi **Speed:** 2-3 sec/rev

Wire Size	Nest No.	Identor No.
8	60601	60602
6	60603	60602
4	60604	60605
2	60606	60605
1/0	60607	60608

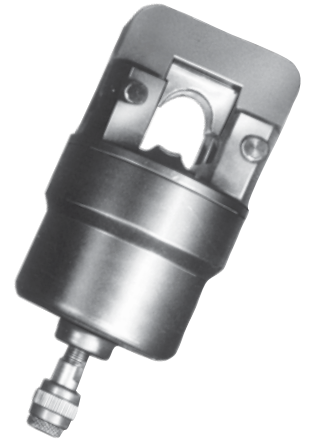
HYDRAULIC HAND TOOLS

POWER ACTIVATED FOR NON-INSULATED TERMINALS AND CONNECTORS

609 HYDRAULIC HEADS

Maximum Capacity: 79M lbs **Weight:** 33 lbs **Pressure:** 7000 psi **Speed:** 25-30 sec/rev

Wire Size	Nest No.	Identor No.
1/0	60901	60902
2/0	60903	60902
3/0	60904	60905
4/0	60906	60905
300MCM	60907	60908
350MCM	60909	60908
400MCM	60910	60911
600MCM	60912	60913



611T HYDRAULIC HEADS

Maximum Capacity: 35M lbs **Weight:** 9.2 lbs **Pressure:** 9800 psi **Speed:** 6-7 sec/rev

Wire Size	Nest No.	Identor No.
8	60801	60802
6	60803	60802
4	60804	60805
2	60806	60805
1/0	60807	60808
2/0	60809	60808
3/0	60810	60811
4/0	60812	60811
300MCM	60813	60814



POWER ACTIVATED FOR INSULATED TERMINALS AND CONNECTORS

610 HYDRAULIC HEADS

This hydraulic head is designed for large size insulated terminals. The crimping dies have 2 sections which enable crimping to be done in one operation (barrel and insulation are crimped simultaneously.) Dies and tool head are sold separately.

Weight: 5 lbs **Pressure:** 650 kg/sq cm **Speed:** 4 sec/rev

Wire Size	Nest No.	Identor No.
8	61001	61002
6	61003	61004
4	61005	61006
2	61007	61008



High quality tools designed to increase productivity. Both portable and bench mounted styles are available. Tools operate on standard 70-90 psi air pressure. Select appropriate jaws for each application when ordering.

YA SERIES CRIMPING TOOLS

Lightweight portable or bench mount tools for all terminal and connector types in wire ranges 26-1/0 AWG.



YA1: Length: 11.8 in **Weight:** 3.7 lbs **Outer Diameter:** 3.5 in

Jaw No.	Wire Size	Terminal Type
AD100	26-22	Non-Insulated
AD101	22-10	Non-Insulated
AD201F	22-16	Insulated
AD202F	16-14	Insulated
AD203F	12-10	Insulated
AD301	22-18	Closed End Connectors
AD302	16-14	Closed End Connectors
AD303	12-10	Closed End Connectors



YA2: Length: 11.6 in **Weight:** 3.7 lbs **Outer Diameter:** 3.5 in

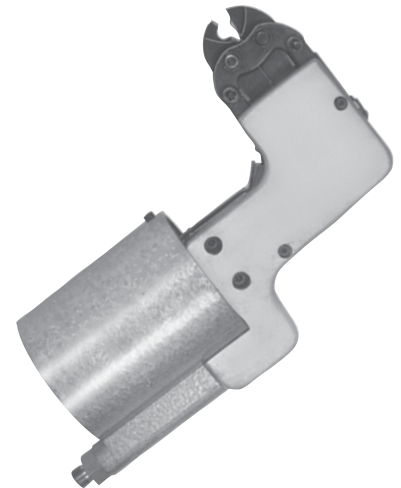
Jaw No.	Wire Size	Terminal Type
AD500	26-22	Non-Insulated
AD501	22-10	Non-Insulated
AD600	26-22	Insulated
AD601F	22-16	Insulated
AD602F	16-14	Insulated
AD801	22-18	Closed End Connector
AD802	16-14	Closed End Connector
AD803	12-10	Closed End Connector

CRIMPING TOOLS

PNEUMATIC CRIMPING TOOLS

YA4 Length: 7.3 in **Weight:** 6.6 lbs **Height:** 10.8 in

Jaw No.	Wire Size	Terminal Type
AD900	22-10	Non-Insulated
AD901	8	Non-Insulated
AD902	6	Non-Insulated
AD911F	22-16	Insulated
AD912F	16-14	Insulated
AD913F	12-10	Insulated
AD931	22-18	Closed End Connectors
AD932	16-14	Closed End Connectors
AD933	12-10	Closed End Connectors
AD934	8	Closed End Connectors
AD941	22-16	Flag Rings Non-Insulated
AD942	16-14	Flag Rings Non-Insulated
AD944	12-10	Flag Rings Non-Insulated
AD945	8	Flag Rings Non-Insulated
AD946	6	Flag Rings Non-Insulated
AD921F	22-16	Non-Insulated with Support Sleeve
AD922F	16-14	Non-Insulated with Support Sleeve
AD923F	1/0	Non-Insulated with Support Sleeve



YA5: Length: 11.8 in **Weight:** 21.5 lbs **Height:** 17.7 in

Jaw No.	Wire Size	Terminal Type
AD951	8	Non-Insulated
AD952	6	Non-Insulated
AD953	4	Non-Insulated
AD954	2	Non-Insulated
AD955	1/0	Non-Insulated
AD951G	8	Flag Rings Non-Insulated
AD952G	6	Flag Rings Non-Insulated
AD953G	4	Flag Rings Non-Insulated
AD-954G	2	Flag Rings Non-Insulated
AD-955G	1/0	Flag Rings Non-Insulated





ACS300 PORTABLE TOOLS

Small, portable, lightweight tool designed for crimping closed end connectors in wire range 22-10. **Length:** 8.5 in **Weight:** 2 lbs

Jaw No.	Wire Size
ADCEAB	22-14
ADCEBD	16-10



AC5N BENCH TOOLS

Lightweight foot operated bench tool for crimping a variety of terminals and connectors in wire range 22-10. **Length:** 7.5 in **Weight:** 6 lbs

Jaw No.	Wire Size	Terminal Type
AC1	22-10	Non-Insulated
AC3	22-16	Insulated
AC4	16-14	Insulated
AC5	12-10	Insulated
AC7A	22-10	Closed End Connectors
F200	22-14	Open Barrel Disconnects



AC3N BENCH TOOLS

Jaw No.	Wire Size	Terminal Type
AC30	20-10	Open Barrel Disconnects
AC31	16-8	Non-Insulated Terminals & Connectors
AC32	26-10	Insulated Terminals & Double Crimp Disconnects
AC33	20-10	Closed End Connectors & Single Crimp Disconnects
AC34	12-8	Closed End Connectors & Single Crimp Disconnects
AC35	20-14	Non-Insulated Flags
AC36	20-14	Insulated Flags
AC37	20-14	Ferrules
AC38	8-6	Insulated Terminals & Closed End Connectors
AC39	10-5	Ferrules
AC04F	20-12	Ferrules
AC35F	8-2	Ferrules

WIRE CUTTERS & STRIPPERS

YA Series Crimping Tools



Y500B STRIPPER AND CUTTER

Lightweight stripper and cutter for quick, easy wire processing. The unique stripping blades automatically adjust to the wire gauge and strips with a quick squeeze of the handles. Cutting blade is exposed by pushing the thumb notch forward, inserting the wire and squeezing the handle to cut.

- Wire Sizes: 20-12 AWG



Y510B STRIPPER AND CUTTER

Designed for stripping small diameter wires in a single movement. It has precision ground blades which cut cleanly through the insulation. An adjustable wire stop is attached to enable repeated stripping to a consistent length.

- Wire Sizes: 18-8 AWG



Y130 VINYL PIPE CUTTER

Durable ratchet type hand tool for cutting rigid and flexible polyvinyl chloride (PVC) pipes and other pipes constructed of synthetic resins. Cutter blade is replaceable.

- Accommodates up to 1-5/8" diameter

Temperature Ratings

Non-Insulated Copper Terminals	176°C (350°F)
Nylon Insulated Terminals	105°C (221°F)
Vinyl Insulated Terminals	75°C (167°F)
Non-Insulated Brass	107°C (225°F)
Non-Insulated Tin Plated Brass	149°C (300°F)
Cable Ties (Clear)	4°C to 80°C (-40°F to 176°F)
Cable Ties (Black)	4°C to 85°C (-40°F to 185°F)
Ceramic Speed-Ease Connectors	149°C (300°F)

Voltage Ratings

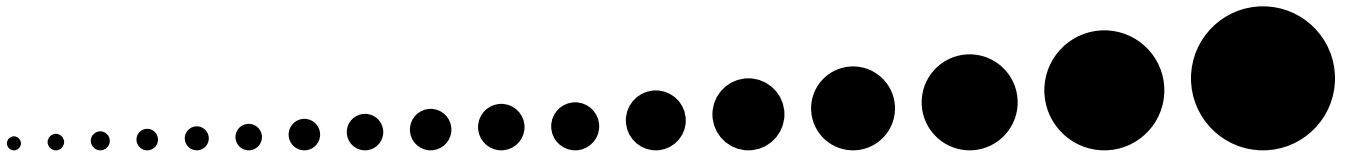
Insulated Copper Terminals	600 Volts Max
Insulated Brass Disconnects	300 Volts Max
Tap Splices (16-10 AWG)	32 Volts Max
Tap Splices (18 AWG)	18 Volts

Amperage

Terminal Size Acceptance	Max Wire Mils	Maximum Circular Mils	Amperage
Copper Terminals and Connectors			
22-16	#15	3256	18
16-14	#13	5190	30
12-10	#9	13104	50
8	#7	20761	70
6	#5	33115	95
4	#3	52614	125
2	#1	83716	170
1/0	1/0	119536	230
2/0	2/0	231295	265
3/0	3/0	190049	310
4/0	4/0	231295	360
Brass			
-	-	-	15

Wire Size Cross Reference

Metric mm ²	AWG
0.50	20-18
1.25	18-16
2.00	16-14
5.50	12-10
8.00	8
14.0	6
22.0	4
35.0	2
60.0	1/0
70.0	2/0
80.0	3/0
100.0	4/0
150.0	300MCM
180.0	350MCM
200.0	400MCM
325.0	600MCM



Stud Clearance

Stud Size	#1	#2	#3	#4	#5	#6	#8	#10	#12	#14	1/14	5/16	3/8	7/16	1/2	5/8	3/4
Screw Dia	0.073	0.086	0.099	0.112	0.125	0.138	0.164	0.190	0.216	0.242	0.250	0.312	0.375	0.437	0.500	0.625	0.750
Hole Dia	0.087	0.087	0.126	0.126	0.146	0.146	0.169	0.209	0.252	0.252	0.252	21/64	13/32	29/64	33/64	21/32	53/64

AUTOMATED EQUIPMENT LEASE PROGRAM

Hoffman Products' automatic processing equipment is economical, fast, safe crimping with advanced state of the art design. We carry a complete line of tape and metal strip mounted terminals and connectors for automatic processing. Contact Hoffman Products' Sales Department for Free Lease Terms: sales@hoffmanproducts.com or **1-800-645-2014**.



Available for lease.

Contact sales@hoffmanproducts.com.

SCT70MS ELECTRIC BENCH MOUNTED FOR INSULATED FLAG DISCONNECTS ON METAL STRIP

The SCT70MS is a foot pedal operated electric machine for crimping right angle insulated disconnects that are mounted on a metal strip. The machine has a crimp cycle of 1 second and provides a proper double crimp on nylon disconnects.

Specifications

- Crimping Range: 22-10 AWG
- Voltage: AC120 or 220 Volt
- Dimensions: 13.78" (L) x 10.63" (W) x 10.24" (H)
- Weight: 66.14 lbs
- 1/4 HP motor
- Rotary Speed: 60 pieces per minute

SCT70PS ELECTRIC BENCH MOUNTED FOR PLASTIC STRIP MOUNTED TERMINALS AND CONNECTORS

Specifications

- Crimping Range: 22-10 AWG
- Voltage: AC120 or 220 Volt
- Dimensions: 13.78" (L) x 10.63" (W) x 10.24" (H)
- Weight: 66.14 lbs
- 1/4 HP motor
- Rotary Speed: 60 pieces per minute

Applicators for Large Cut Strip and Crimp Equipment. Contact Hoffman Products' Sales Department at sales@hoffmanproducts.com or **1-800-645-2014**.

AUTOMATED EQUIPMENT LEASE PROGRAM



Available for lease.

Contact sales@hoffmanproducts.com.

APF6 PNEUMATIC BENCH MACHINE FOR TAPE ON REEL PRODUCTS

The APF6 semi automatic terminal-on-tape crimping machine is easy to operate, and is suitable for mass production of crimped harnesses with closed barrel insulated and non-insulated TOR (tape on reel) terminals in wire ranges 26-8 AWG.

- Crimps up to 3600 pieces per hour
- Cycle index holds terminal secure during wire insertion
- Equipped with either foot pedal activation or automatic sensor operation
- Dies can be changed quickly to accommodate different barrel sizes
- Positive die alignment to assure proper installation
- Safety guard must be in place to operate
- Quiet operation

Specifications

- Weight: 88 lbs
- Dimensions: 16.34" (L) x 10.4" (W) x 15.16" (H)
- Power Supply: 115 VAC, 50/60 Hz
- Operating Air Pressure: 75-90 psi



Available for lease.

Contact sales@hoffmanproducts.com.

SCT25 SEMI AUTOMATIC ELECTRIC METAL STRIP CRIMPING MACHINE

The SCT25 crimping machine is an electric machine operated by a foot pedal. The specially designed applicators are easy to install and are designed to process both horizontal and vertical mounted terminals. The clutch assembly enables the operator to set the correct crimping point. It is a quiet, efficient machine that improves overall crimping productivity.

Specifications

- Capacity: 2.5 tons
- Power Supply: AC110 / 220V
- Power: 1/3 HP
- Stroke Length: 30 mm
- Operation: Foot Pedal
- Dimensions: 420 mm (L) x 320 mm (W) x 520 mm (H)
- Weight: 100 kg



HOFFMAN PRODUCTS

A TPC WIRE & CABLE CORP. BRAND

9600 Valley View Road, Macedonia, OH 44056

AUTOMATED EQUIPMENT LEASE PROGRAM

Our free lease terms provide you with no up front costs to automate your wire crimping process. Hoffman Products carries a complete line of tape and metal strip mounted terminals and connectors for automatic processing.

Equipment Available for Lease:

APF6 Pneumatic Bench Mount Crimping Machine

SCT70MS Electric Bench Mount Crimping Machine

SCT25 Electric Semi Automatic Crimping Machine

Contact Hoffman Products' Sales Department today for free lease terms.



SCT70MS

More information on page 54

HOFFMAN PRODUCTS • 9600 VALLEY VIEW RD, MACEDONIA, OH 44056
WWW.HOFFMANPRODUCTS.COM • SALES@HOFFMANPRODUCTS.COM
PHONE **216-525-4320** • **800-645-2014** • FAX **866-896-3017**

HOF123 (REV. 12/12) PRINTED IN U.S.A. ©Copyright 2012 by Hoffman Products, A TPC Wire & Cable Corp. Brand. All rights reserved. No portion of this publication, whether in whole or in part, can be reproduced without the express written consent of TPC Wire & Cable Corp.

X-ON Electronics

Largest Supplier of Electrical and Electronic Components

Click to view similar products for [Terminals](#) category:

Click to view products by [TPC Wire & Cable](#) manufacturer:

Other Similar products are found below :

[HT-13-10](#) [71M-250-32-NB](#) [01-2065-1-0216](#) [00581P0075](#) [M10-10RX](#) [M10BCK](#) [60205-1](#) [604200-1](#) [60598-1-CUT-TAPE](#) [60617-1-C](#) [60873-1](#) [M14-516R/SK](#) [M14-6RSX](#) [M18-10FLX](#) [M18-8FBX](#) [M18-8R/LX](#) [M18BCK](#) [61314-6-C](#) [61-S](#) [61-SN-A](#) [62-NBM-A](#) [63-S](#) [640179-1](#) [640917-2-CUT-TAPE](#) [6501550002](#) [66107-2-C](#) [66107-4-C](#) [696683-1](#) [696834-1](#) [696861-1](#) [696931-1](#) [696999-1](#) [M8-516RK](#) [M86700006](#) [MA250DMFMX-A](#) [701-2007](#) [701-2307](#) [701-7761-03](#) [70F-110-32-PB](#) [718-N-A](#) [71M-187-20-NBL](#) [71M-250-32-NBL](#) [72F-187-20-NBL](#) [72M-250-32-NBL](#) [7310](#) [73F-250-32](#) [73F-250-32-NBL](#) [73F-250-32-NL](#) [F14-10C](#) [F-1M](#)