

# MCE Enclosures

## Product presentation

### Modular Component Enclosures

MCE - Modular Component Enclosures offer easy-to-use and practical functionality, and are designed to house din rail mounted automation, control and switch gear components. MCE enclosures can be connected to each other with flange openings to build bigger panels. Cable entries are available in all sides.

They are spacious inside, available in many sizes and offer modular flexibility.



# MCE Enclosures

## Features



Available in PC and ABS

IP 65 (PC)

IK 08 (PC)

Modular and elegant enclosure design – easy to extend

Sizes fra 5 up to 42 modules, Other sizes on request

Easy connection through flange openings

Knock-out, flange sides and pipe entry

Spacious and easy to wire

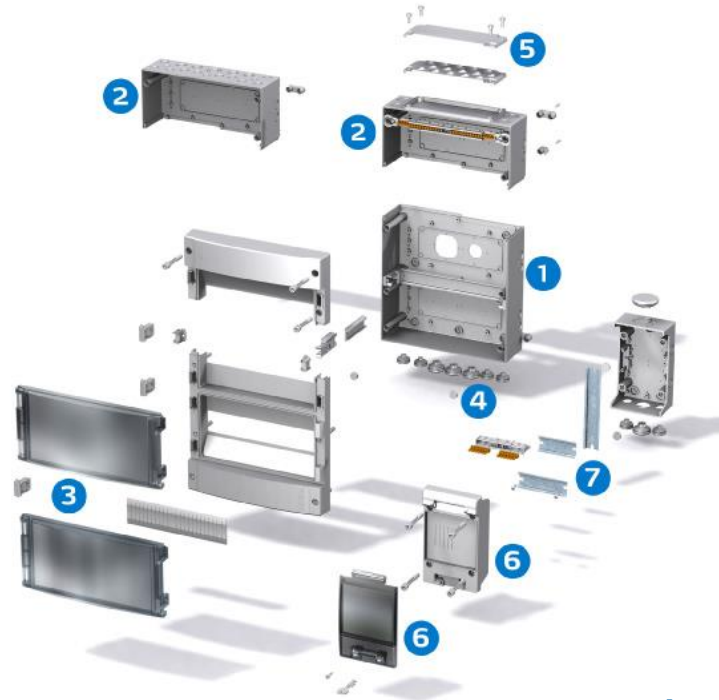
PE/N terminals and membranes included

DIN-rail system with adjustable rail depth

Seperate window for each row of installed components

Designed to house automation, control and switch gear components

# MCE Enclosures



## Enclosure

- 1 1, 2 or 3 row enclosure base made from PC  
Metric cable openings on all 4 sides and in the enclosure base
- 2 Upper part of the enclosure made from PC, various versions with or without DIN rails
- 3 Front cover, in smoked grey or clear transparent, incl. TPE gasket

## Accessories

- 4 Multi FEM, multi-cable membrane glands for structured wiring solutions
- 5 Knock-out plates, various versions
- 6 MCE enclosure 5/9
- 7 DIN rails for the mounting of machines

# MCE Enclosures

## New plug-in PEN terminals in 14+ sizes

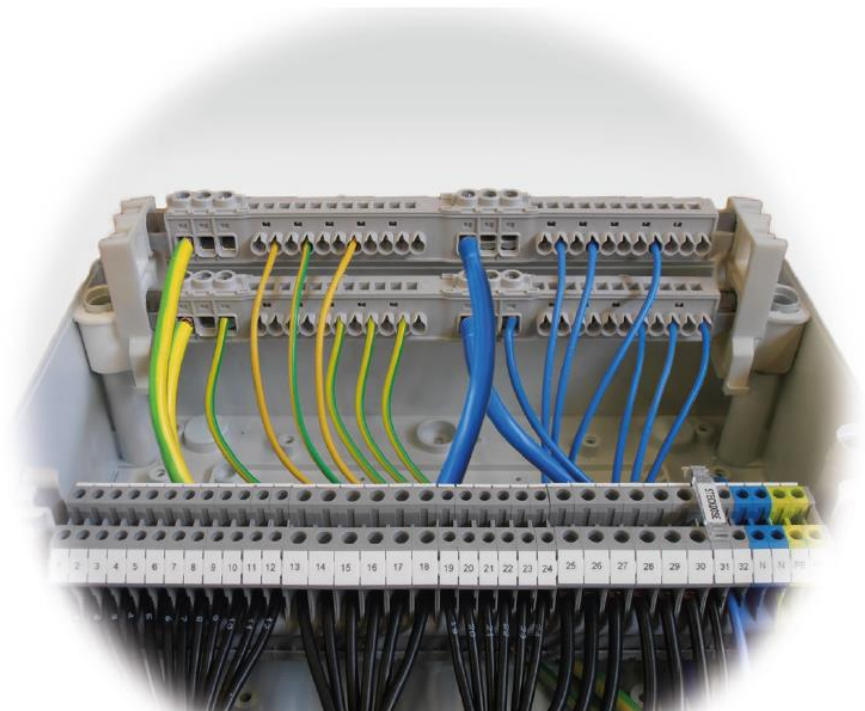
All 14+ sizes are fitted now with the new plug-in PE/N terminals.

Outgoing wires are clamped and kept firmly in the terminal without a screw. It makes wiring easy and quick and brings down the cost of installation.

Housing of the terminals is made from insulating material and its design is finger-proof – these features enhance safety and provide maximum user protection.

Single PEN-bar offers  $3 \times 16 \text{ mm}^2 + 11 \times 4 \text{ mm}^2$  for PE and the same configuration for N connections. In sizes 28 and 42 two bars are used to provide relevant wiring capacity.

$3 \times 16 \text{ mm}^2$  are screw terminals to ensure connection reliability.



# MCE Enclosures

## Technical information and approvals

### MCE technical information

Property	Polycarbonate (PC)	ABS
Ingress Protection (EN 60529)	IP 65	IP54
Impact Resistance (EN 62262)	IK 08	IK07
Température Range Celsius (short term) Fahrenheit	-40° . . 120°C -40° . . 250°F	-40° . . 80°C -40° . . 175°F
Température Range Celsius (continuous) Fahrenheit	-40° . . 80°C -40° . . 175°F	-40° . . 60°C -40° . . 140°F
Electrical Insulation	Totally insulated ☒	Totally insulated ☒
Light Grey Parts Colour	RAL 7035 Industry Grey	RAL 7035 Industry Grey
Transparent Clear PC Cover	Smoked Grey	Smoked Grey
Cover Screws	RAL 7035	RAL 7035
Cover Screws	Polyamide (PA)	Polyamide (PA)
Gasket	TPE, Thermo Plastic Elastomer	TPE, Thermo Plastic Elastomer
Enclosure Flammability Rating	UL 746C 5V*	
Glow Wire Test (IEC 695-2-1) Self -extinguishing (PC)	960°C	
Non-toxicity	Halogen Free	Halogen Free
UV resistance	UL 508 720 hours in "Weatherometer"	
Chemical Resistance **	Good	Good

Data subject to change without notice.

\*\* Consult separate raw material data for more detailed information

### Confirmity to standards

**USA** Enclosures for Electrical Equipment  
PC:UL Type 1; UL File E75645 Vol1 Sec 8\*

**Canada** Industrial Control Equipment  
Enclosures for Electrical Equipment/ULC\*

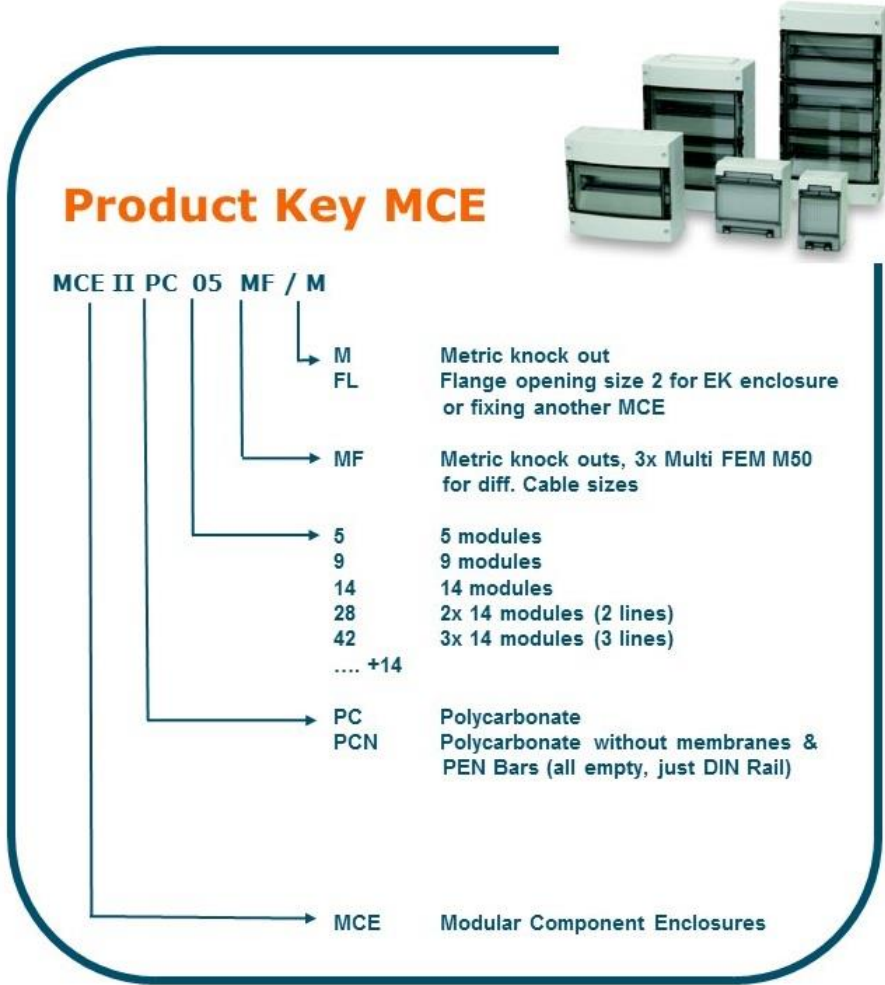
**Europe** Empty enclosures for low-voltage switchgear and  
controlgear assemblies EN 62208:2003

**Europe** Safety of Information Technology Equipment  
EN 60950  
RoHS directive 2002/95/EC

**Russia** GostR - Gost Russian certificate of conformity

\*UL label on request

# MCE Enclosures



# MCE Enclosures

## Typical applications

- Small power distribution boards – indoor & outdoor
- Automation, switch and control gear
- PC ideal solution for outdoor applications



# MCE Enclosures

Learn more:

- [www.fibox.com](http://www.fibox.com)
  - [MCE products](#)
  - [Accessories](#)
- Catalogues
  - [Fibox Enclosure and Cabinet Overview:](#)
  - [Enclosure catalogue 5.0](#)



## X-ON Electronics

Largest Supplier of Electrical and Electronic Components

*Click to view similar products for [Electrical Enclosures](#) category:*

*Click to view products by [Fibox](#) manufacturer:*

Other Similar products are found below :

[120-902](#) [120-905](#) [120-403](#) [120-475](#) [120-901](#) [127-410](#) [130-504](#) [130-506](#) [MR-25L+](#) [30-8739](#) [PIP-11774SCREW](#) [30-9715](#) [MR-25LW+](#) [110-407](#) [111-004](#) [111-008](#) [110-402](#) [110-901](#) [110-907](#) [111-002](#) [110-406](#) [110-910](#) [110-404](#) [110-409](#) [110-410](#) [120-405](#) [106-009](#) [106-505](#) [105-401](#) [106-006](#) [104-406](#) [137-002](#) [105-405](#) [111-005](#) [127-909](#) [106-502](#) [130-475](#) [130-503](#) [127-401](#) [106-010](#) [127-455](#) [127-475](#) [110-903](#) [R260-180-300](#) [9511020](#) [9822029](#) [9820014](#) [P61603000P](#) [9823009](#) [R103-164-000](#)