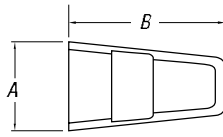


Wire Joints

Crimp-On Wire Joints, One-Piece Nylon Self-Insulated



CAT. NO.	PKG. QTY.	WIRE RANGE		REC. TOOL	DIMENSIONS	
		MIN.	MAX.		A	B
RB44	100	2#18	2#16	WT2000	.31	.78
RB4-TB	1,000	2#18	2#16		.31	.78
RC55	50	4#18	2#12	WT2130A	.43	.95
RC6	500	4#18	2#12		.43	3
RP12	100	3#14	4#12		.53	1.00
RP7	1,000	3#14	4#12		.53	1.00

CAT. NO.	ALLOWABLE WIRE COMBINATIONS						
	#22	#20	#18	#16	#14	#12	#10
RB4-TB/ RB44			2-3				
			1-2	2			
		3					
		3					
		3	1				
		2	3				
		1-2		2			
		2			1		
			3	1			
		1	2				

CAT. NO.	ALLOWABLE WIRE COMBINATIONS						
	#22	#20	#18	#16	#14	#12	#10
RC6/RC55			1-4			1	
				1-3		1	
					1-2	1	
						2	
				3-5		1	
				2-4		1	
						3	
				1-4		2	
					1-3	2	
				1-3		3	
					1	3	
					2-5		
				4-6			

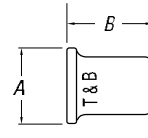
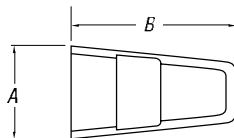
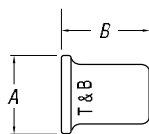
CAT. NO.	ALLOWABLE WIRE COMBINATIONS						
	#22	#20	#18	#16	#14	#12	#10
RP7/RP12							2
						1	1
					1		1
						2-4	
					2-4	1	
					1-3	2	
					1	3	
					3-6		
					1	2-3	
					2	1-2	

PT Series Crimp-On Wire Joints

Two-Piece Nylon Insulator



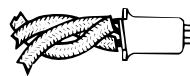
One-Piece Non-Insulated



CAT. NO.	PKG. QTY.	WIRE RANGE		REC. TOOL	DIMENSIONS	
		MIN.	MAX.		A	B
PT66M	100	2#18	3#12 combination	WT161M	.50	.93
PT6M	100	—	Insulator only		.50	.93
PT60M	100	2#14	3#12 connector only		.31	.37
PT70	200	2#14	3#12		.29	.34
PT70M	200	3#18	4#12		.31	.37
PT80	50	2#16	4#10		.35	.62

90° C rated.

Installation Procedure for "PT" Connectors



Twist wires, insert through serrated barrel of wire joint. (PT60M, PT70, PT70M, PT80.)



Crimp and trim off excess wire with WT161M hand tool.



Screw PT6 insulator firmly onto PT160M barrel.

Wire Joints

High-Temperature Wire Joints

- Rated for temperatures up to 150° C (302° F), 600V maximum
- Molded, one-piece nylon construction for electrical insulation, UL94-V2
- Brazed copper sleeve prevents separation of connection during crimping
- Internal serrations enable cold flow for increased conductivity and pull-out strength



CAT. NO.	PKG. QTY.	WIRE RANGE		REC. TOOL	DIMENSIONS	
		MIN.	MAX.		A	B
RB4-HT	1,000	2#18	2#16	WT2000	.36"	.82"
RB44-HT	100	2#18	2#16	WT2000	.36"	.82"
RC6-HT	500	3#16	3#14	ERG4001, WT2130A	.48"	.95"
RC551-HT	100	3#16	3#14	ERG4001, WT2130A	.48"	.95"
RP7-HT	500	3#14	3#12	ERG4007, WT2130A	.53"	1.00"
RP12-HT	100	3#14	3#12	ERG4007, WT2130A	.53"	1.00"

Wire Joints UL Listed Combinations

CAT. NO.	SOLID OR STRANDED AWG
RB4, RB44, RB4-10M	(2) or (3) #18 (2) #16 (1) #16 and (1) or (2) #18 (3) #22 (3) #20 (3) #22 and (1) #18 (2) #22 and (3) #20 (1) or (2) #22 and (2) #18 (2) #22 and (1) #16 (3) #20 and (1) #18 (2) #20 and (1) #22 (2) #20 and (1) #16 (1) #20 and (2) #18
RC6, RC6-5M, RC55	(1) #14 with (2), (3) or (4) #16 (1) #14 with (3), (4) or (5) #18 (2) #14 with (1), (2), (3) or (4) #18 (2) #14 with (1), (2) or (3) #16 (3) #14 (4) to (7) #18 (3) #14 with (1) or (2) #18 (3) #14 with (1) #16 (1) #12 with (1), (2), (3) or (4) #18 (1) #12 with (1), (2) or (3) #16 (1) #12 with (1) or (2) #14 (5) #16

CAT. NO.	SOLID OR STRANDED AWG
RP7, RP-12	(2) to (4) #12 AWG (3) to (6) #14 AWG (3) #12 and (1) #14 (2) #12 and (1) #14 (2) #12 and (2) #14 (2) #12 and (3) #14 (1) #12 and (2) #14 (1) #12 and (3) #14 (1) #12 and (4) #14 (2) #10 (1) #10 and (1) #12 (1) #10 and (1) #14 (1) #8 Str. and (1) #16 (1) #10 and (1) #16 (1) #12 and (1) #16

X-ON Electronics

Largest Supplier of Electrical and Electronic Components

Click to view similar products for [abb manufacturer](#):

Other Similar products are found below :

[TV10-516R](#) [017667013](#) [RF727](#) [2CMA100178R1000](#) [5SDD 92Z0401](#) [ESV14-BS](#) [EZS-21-250](#) [F204AC-40/0.03](#) [F204AC-40/0.1](#) [F362-25/0.03](#) [A40-30-10-84](#) [AF09-30-01-11](#) [AF460-30-11-68](#) [1455](#) [EF45-30](#) [ERG297](#) [HSC2-20](#) [1SAM201904R1001](#) [1SAM350000R1003](#) [1SAZ721201R1009](#) [1SAZ721201R1014](#) [1SAZ721201R1025](#) [1SDA057197R1](#) [1SFA611101R1002](#) [1SFA611130R1103](#) [1SFA611143R1101](#) [1SFA611201R1006](#) [1SFA611202R1108](#) [1SFA611203R1108](#) [1SFA611215R1001](#) [1SFA611216R1108](#) [1SFA611285R1002](#) [1SFA611521R1001](#) [1SFA611702R6006](#) [1SFA616162R1025](#) [1SFA619100R3015](#) [1SVR730020R0200](#) [IPC4111](#) [OS30FACC12](#) [OS60GJ03](#) [OVR1N160277PS](#) [OXC1L48](#) [254](#) [S2C-H6RU](#) [2CDS212001R0165](#) [A50N2-30-11-84](#) [EZ-CHARGER](#) [EZL-21-V1](#) [AF116-30-11-13](#) [AF145-30-11-69](#)