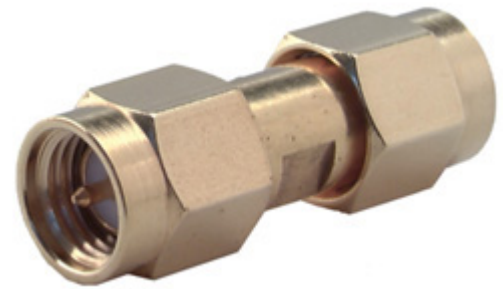


## Within Series Adaptor 32\_SMA-50-0-1/111\_N

### Description

Adaptor plug/plug  
SMA plug (male) / SMA plug (male)

Interface standard  
Series SMA - IEC 60169-15\_MIL-STD-348A/310\_CECC 22110



### Technical Data

#### Electrical Data

Impedance	50 Ω
Interface frequency max.	18 GHz
VSWR	DC - 18 GHz ≤ 1.05 + 0.005 f (GHz)
Electrical length	26.1 mm

#### Mechanical Data

Number of matings	500
Weight	0.0058 kg

#### Environmental Data

Operating temperature	-65 °C to 165 °C
2011/65/EU (RoHS)	compliant

#### Material Data

Interface - SMA plug (male)

Piece Parts	Material	Surface Plating
Centre contact	Copper Beryllium Alloy	Gold Plating (Nickel underplated)
Outer contact	Copper Beryllium Alloy	Gold Plating (Nickel underplated)
Body	Copper Beryllium Alloy	Gold Plating (Nickel underplated)
Insulator	PFA / PTFE	
Coupling nut	Bronze	Gold Plating (Nickel underplated)
Gasket	VMQ (Silicone rubber)	

Interface - SMA plug (male)

Piece Parts	Material	Surface Plating
Centre contact	Copper Beryllium Alloy	Gold Plating (Nickel underplated)
Outer contact	Copper Beryllium Alloy	Gold Plating (Nickel underplated)
Body	Copper Beryllium Alloy	Gold Plating (Nickel underplated)
Insulator	PFA / PTFE	
Coupling nut	Bronze	Gold Plating (Nickel underplated)
Gasket	VMQ (Silicone rubber)	

### Related Documents

Catalogue drawing	DCA-00013690
-------------------	--------------

### Ordering Information

Single package	32_SMA-50-0-1/111_NE
----------------	----------------------

## Within Series Adaptor 32\_SMA-50-0-1/111\_N

## X-ON Electronics

Largest Supplier of Electrical and Electronic Components

*Click to view similar products for [RF Connectors / Coaxial Connectors](#) category:*

*Click to view products by [Huber & Suhner](#) manufacturer:*

Other Similar products are found below :

[R125315120](#) [8915-1511-000](#) [89674-0827](#) [5916-1103-603](#) [0106-001-000](#) [6-0001-3](#) [6001-7071-019](#) [6002-7051-003](#) [6002-7551-202](#) [6059674-1](#) [619550-1](#) [630059-000](#) [M39012/25-0021](#) [M39012/79-3008](#) [M39030/3-01N](#) [M39030/3-03N](#) [M3933/25-29N](#) [M3933/25-36N](#) [6500-7071-046](#) [6501-1071-002](#) [M83723/72W24576](#) [M83723/72W2457N](#) [6769](#) [CX050L2AQ](#) [7002-1541-010](#) [7003-1572-002](#) [7004-1512-000](#) [7009-1511-004](#) [7010-1511-000](#) [7029-1511-060](#) [7101-1541-010](#) [7101-1571-002](#) [7105-1521-002](#) [7145-1521-002](#) [7209-1511-011](#) [7210-1511-012](#) [7210-1511-015](#) [7210-1511-019](#) [7210-1511-040](#) [7225-1512-050](#) [7242-1511-000](#) [73137-5015](#) [73251-0111](#) [73251-0672](#) [73276-1501](#) [73366-0013](#) [73404-2300](#) [73413-6080](#) [734151610](#) [73415-5721](#)