

Einphasensparstelltransformatoren  
nach VDE 0552  
in Vorbereitung EN 61558-2-14



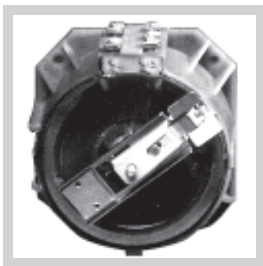
Single phase regulating  
autotransformers to VDE 0552  
in preparation EN 61558-2-14

## Technische Werte

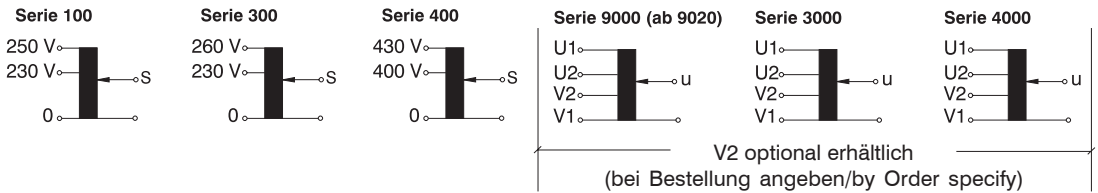
Schutzgrad IP00  
Isolierstoffklasse B  
Umgebungstemperatur max. + 45 °C  
Prüfspannung Wicklung-Welle 4 kV ~  
Frequenz 50/60 Hz  
Drehwinkel 320 °

## Technical data

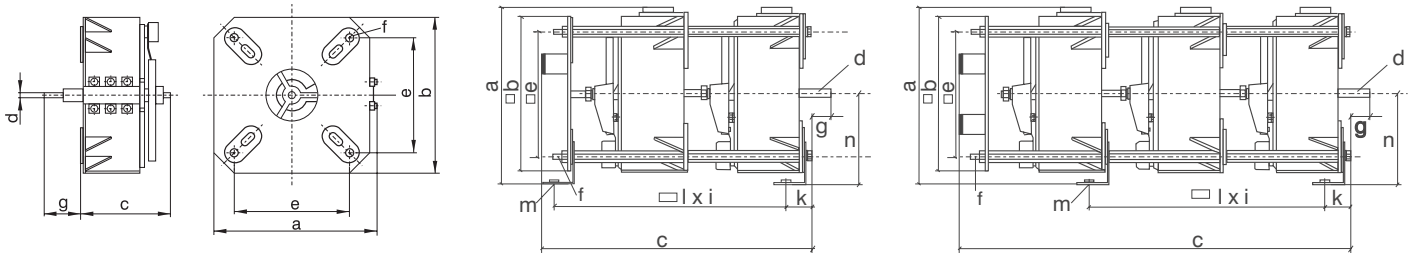
safety qualities IP00  
heat resistance class B  
ambient temperature max. + 45 deg C  
test voltage windings-shaft 4 kV ~  
frequency 50/60 Hz  
angle of rotation 320 °



## Schaltbild/ Circuit diagram



## Abmessungen/ Dimensions



Eingang/Input: 230 V Ausgang/Output: 0 ... 230/250 V		Eingang/Input: 230 V Ausgang/Output: 0 ... 230/260 V		Eingang/Input: 400 V Ausgang/Output: 0 ... 400/430 V		Abmessungen/ Dimensions																
max. Eingangsstrom/ Ausgangsstrom		max. input current/ output current				a	b	c	d	e	f	g	i	k	l	m	n	Masse Weight				
Typ/type	A	A	Typ/type	A	A	Typ/type	A	A	mm	mm	mm	mm	mm	mm	mm	mm	mm	kg				
ESS 102	2,5	2,0	ESS 302	2,1	1,8				137	125	84	6	96	5,8	32	-	-	2,6				
ESS 9020			ESS 3018								8		0...35									
ESS 103	3,5	3,15																				
ESS 104	4,5	4,0	ESS 303	3,6	3,15	ESS 402	1,8	1,6	159	147	84	6	112	5,8	32	-	3,8					
ESS 9032	3,15	3,5				ESS 4016						8			0...35							
ESS 9040	4,5	4,15	ESS 3032																			
ESS 106	7,0	6,3	ESS 305	5,7	5,0	ESS 403	2,7	2,5	159	147	103	6	112	7	32	-	5,2					
ESS 9063			ESS 3050			ESS 4025						8			0...35							
ESS 108	9,0	8,0																				
ESS 110	11,5	10,0	ESS 308	9,1	8,0	ESS 405	5,5	5,0	197	185	118	8	142	7	32	-	7,8					
ESS 9080	9,0	8,0				ESS 4050									0...35							
ESS 9100	11,5	10,0	ESS 3080														8,3					
ESS 118	20,0	18,0																				
ESS 120	23,0	20,0	ESS 318	21,0	18,0	ESS 409	10,0	9,0	243	231	121	8	180	11	32	-	14					
ESS 9180	20,0	18,0				ESS 4090																
ESS 9200	23,0	20,0	ESS 3180												0...35							
ESS 9250	28,0	25,0	ESS 3230	26,0	23,0	ESS 4120	13,0	12,0			133						16,3					
Parallelschaltung von 2 Einzeltransformatoren hintereinander angeordnet/parallel connection of 2 single transformers																						
ESS 9340	37,0	34,0	ESS 3340	39,0	34,0	ESS 4180	20,0	18,0	253	231	420			Bolzen	0,35	210	26	270	M8	126	33,0	
ESS 9380	42,0	38,0	ESS 3440	50,0	44,0	ESS 4230	25,0	23,0			450	8	180	M10							35,0	
ESS 9480	53,0	48,00									450											38,0
Parallelschaltung von 3 Einzeltransformatoren hintereinander angeordnet/parallel connection of 3 single transformers																						
ESS 9570	62,0	57,0	ESS 3510	58,0	51,0	ESS 4250	27,0	25,0	253	231	730	8	180	Bolzen	0,35	210	26	270	M8	126	52,0	
ESS 9720	80,0	72,0	ESS 3660	75,0	66,0	ESS 4340	37,0	34,0			775			M10								59,0

\* Serie 3000, 4000 und 9000 mit variabler Achslänge und zusätzlicher Anzapfung für Linksbetrieb (siehe Schaltbild)  
\*\* Achsen anderer Längenabmessungen auf Anfrage  
Andere Spannungen, Ströme und Frequenzen sowie Ausführung als Trenntransformatoren auf Anfrage

\* Series 3000, 4000 and 9000 with variable shaft length and additional tap for anti-clockwise-operation (see circuit diagram)  
\*\* Other shaft length on request  
Other voltages, currents and frequencies as well as isolated windings on request

Einphasensparstelltransformatoren  
nach VDE 0552  
in Vorbereitung EN 61558-2-14  
für Zentralbefestigung



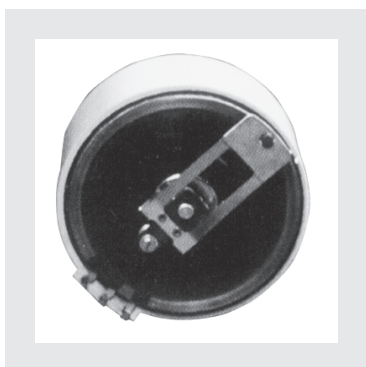
Single phase regulating  
autotransformers to VDE 0552  
in preparation EN 61558-2-14  
fit for central mounting

## Technische Werte

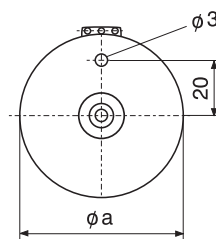
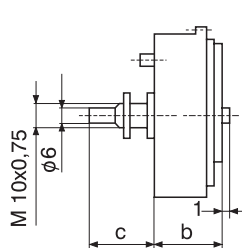
Schutzgrad	IP00
Isolierstoffklasse	B
Umgebungstemperatur	max. + 45 °C
Prüfspannung Wicklung-Welle	1,5 kV ~
Frequenz	50/60 Hz
Drehwinkel	320 °

## Technical data

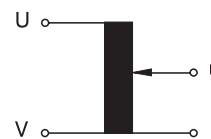
safety qualities	IP00
heat resistance class	B
ambient temperature	max. + 45 deg C
test voltage windings-shaft	1,5 kV ~
frequency	50/60 Hz
angle of rotation	320°



## Abmessungen / Dimensions



## Schaltbild Circuit diagram



TYP type	Nenningangs- spannung input voltage (V)	Ausgangs- spannung output voltage (V)	Dauerstrombelastbarkeit output current in continuous operation (A)	a (mm)	b (mm)	c (mm)	Masse Weight (kg)
KSS 103	42	< 1 ... 42	2,5	70	55	32	0,6
KSS 105	60	< 1 ... 60	5,0	94,5	58	28	1,4
ESS 9008	250	< 1 ... 250	0,8	94,5	58	28	1,4
ESS 9010	230	< 1 ... 230	1,0	94,5	58	28	1,4
ESS 9013	230	< 1 ... 230	1,25	94,5	58	28	1,4

Andere Spannungen, Ströme und Frequenzen  
auf Anfrage

Other voltages, currents and frequencies  
on request

## X-ON Electronics

Largest Supplier of Electrical and Electronic Components

*Click to view similar products for [Autotransformers](#) category:*

*Click to view products by [Thalheimer-Trafowerke](#) manufacturer:*

Other Similar products are found below :

[ARM-2.0/3](#) [ESS 104](#) [ESS 120](#) [ARM-3.0/1](#) [ARM-5.0/1](#) [ATS1000VA-230/110V U](#) [ATS1500VA-230/110V U](#) [ATS1500VA-230/110V U+UMS](#) [ATS200VA-230/110V](#) [ATS300VA-230/110V](#) [ATS50VA-230/110V](#) [ATS600VA-230/110V](#) [TS50-230V/115V-001](#) [TS90-230V/115V-002](#) [VP-500VA](#) [OIEA1](#) [OIEA15](#) [OIEA3](#) [OIEA8](#) [VP-2000VA](#) [VP-1000VA](#) [N-1000MG](#) [N-3MG](#) [N-5MG](#) [N-6U](#) [N-150MG](#) [N-2X](#) [N-9MG](#) [110-0F](#) [120-0F](#) [1150-0F](#) [1100-0F](#) [130-0F](#) [125-0F](#) [175-0F](#) [150-0F](#) [115-0F](#) [112-0F](#) [ATS100-230V/115V-001](#) [ATS25-230V/115V-001](#) [ATST1000-230V/115V-001](#) [ATST1000-230V/115V-002](#) [ATST100-230V/115V-001](#) [ATST100-230V/115V-002](#) [ATST1500-230V/115V-002](#) [ATST2000-230V/115V-001](#) [ATST2000-230V/115V-002](#) [ATST200-230V/115V-001](#) [ATST3000-230V/115V-001](#) [ATST3000-230V/115V-002](#)