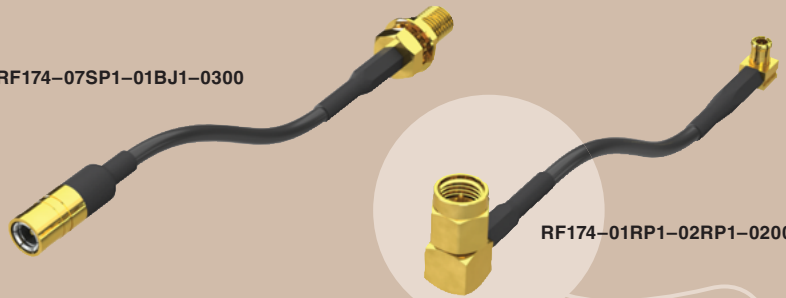


RF174-07SP1-01BJ1-0300



RF174-01RP1-02RP1-0200

RF174 SERIES

50Ω RG 174 CABLE ASSEMBLIES

SPECIFICATIONS

For complete specifications see www.samtec.com?RF174

RF Connector:

Outer Contact Material:
Ni plated Brass (BNC)
Au plated Brass (SMB & SMA)
Au plated BeCu (MCX, MMCX & SSMB)
Center Contact Material:
Au plated Brass (BNC-P, MCX-P, MMCX-P & SMA-P)
Au plated BeCu (SMB-P, SMA-J & SSMB)
Au plated Phos. Bronze (BNC-J)

Insulator Material:

PTFE

Operating Temperature:

-50°C to +90°C

Insulator Resistance:

5,000 MΩ

Impedance:

50Ω

Frequency Range:

0-6 GHz (Cable & connector dependent)

RoHS Compliant:

Yes

RG 174 Cable:

Impedance:

50Ω

Capacitance:

101.024 pF/meter

Max Attenuation (cable only):

1.4dB @ 1GHz for 1 meter

Conductor Size:

26 AWG, (0,48 mm) .019" dia.

Conductor Material:

Copper

Insulator Material:

LEP

Shield Material:

Tin Copper

Jacket Material:

PVC

Jacket Diameter:

(2,70 mm) .106"

Jacket Color:

Black

RoHS Compliant:

Yes

Mates with:
MCX, MMCX, MMCXV, SMA, SMB5, SSMB, BNC5, TNC, NTPe

THINK OUTSIDE THE CATALOG

- Create a full system: cable assembly and board level mates, 50Ω and 75Ω solutions
- 24-hour samples on standard products
- Visit: rf.samtec.com



Standard performance 26 AWG RG 174 coax cable

2.3dK

Plugs and Jacks

Single or Double Ended

Straight or Right Angle

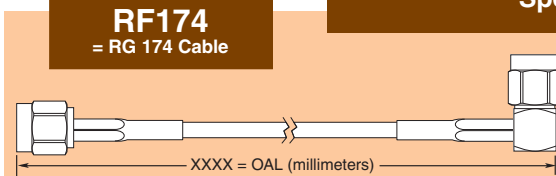
CABLE TYPE

END 1 CONNECTOR

END 2 CONNECTOR



Specify END OPTIONS from chart



END OPTIONS	
-01SP1 = SMA Straight Plug (30µ" (0,76 µm) Gold on Center Contact, Gold Flash on Shell)	
-01RP1 = SMA Right Angle Plug (30µ" (0,76 µm) Gold on Center Contact, Gold Flash on Shell)	
-07SP1 = SMB Straight Plug (30µ" (0,76 µm) Gold on Center Contact, Gold Flash on Shell)	
-07RP1 = SMB Right Angle Plug (30µ" (0,76 µm) Gold on Center Contact, Gold Flash on Shell)	
-02SJ1 = MCX Straight Jack (30µ" (0,76 µm) Gold on Center Contact, Gold Flash on Shell)	

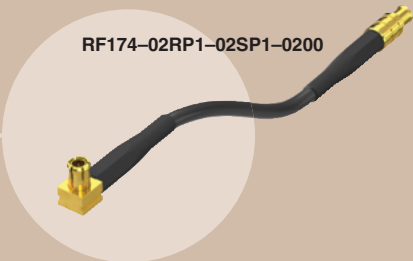
END OPTIONS	
-02RP1 = MCX Right Angle Plug (30µ" (0,76 µm) Gold on Center Contact, Gold Flash on Shell)	
-02SP1 = MCX Straight Plug (30µ" (0,76 µm) Gold on Center Contact, Gold Flash on Shell)	
-03SP1 = MMCX Straight Plug (30µ" (0,76 µm) Gold on Center Contact, Gold Flash on Shell)	
-03RP1 = MMCX Right Angle Plug (30µ" (0,76 µm) Gold on Center Contact, Gold Flash on Shell)	
-V3SP1 = MMCXV Straight Plug, High Vibration (30µ" (0,76 µm) Gold on Center Contact, Nickel on Shell)	
-V3RP1 = MMCXV Right Angle Plug, High Vibration (30µ" (0,76 µm) Gold on Center Contact, Nickel on Shell)	
-V3SJ1 = MMCXV Straight Jack, High Vibration (30µ" (0,76 µm) Gold on Center Contact, Nickel on Shell)	
-S7SP4 = SSMB Straight Plug (10µ" (0,25 µm) Gold on Center Contact, Nickel on Shell)	
-S7RP4 = SSMB Right Angle Plug (10µ" (0,25 µm) Gold on Center Contact, Nickel on Shell)	

Due to technical progress, all designs, specifications and components are subject to change without notice.

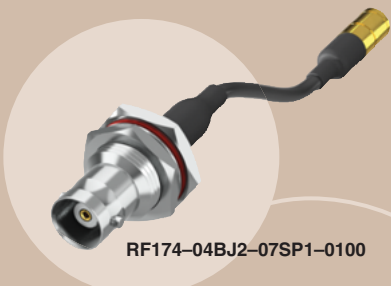
WWW.SAMTEC.COM



RF174-03RP1-07RP1-0200



RF174-02RP1-02SP1-0200



RF174-04BJ2-07SP1-0100



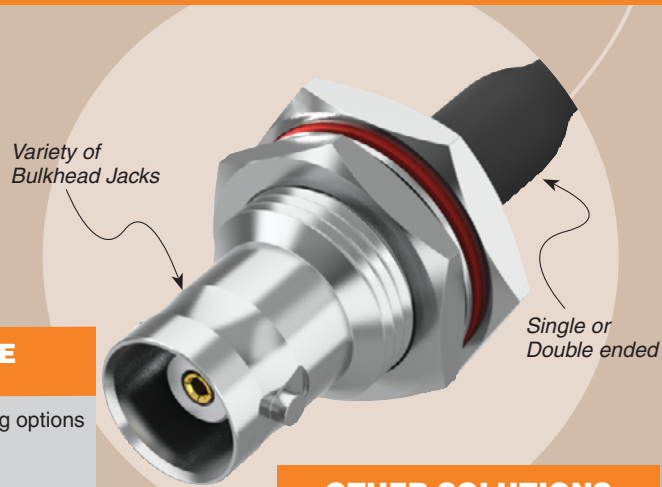
Heavy Gold plated

Standard heat shrink wraps

Choice of RF connector styles

ALSO AVAILABLE
(MOQ Required)

- Additional stripping and tinning options
- IP67 TNC option
- Additional plating options
- Additional end connector combinations
- Knurled nuts with BNC option
- Contact Samtec.



Variety of Bulkhead Jacks

Single or Double ended

OTHER SOLUTIONS

- Cable connector kits (see cable components catalog pages)

OVERALL LENGTH

—“XXXX”

= Overall Length in millimeters -0100 (100 mm) minimum
(Cable lengths larger than 1000 millimeters are not supported by S.I. Test data)

END OPTIONS	
<p>-04SP3 = BNC Straight Plug (10µ" (0,25 µm) Gold on Center Contact, Nickel on Shell)</p>	
<p>-05SP3 = TNC Straight Plug (10µ" (0,25 µm) Gold on Center Contact, Nickel on Shell)</p>	
<p>-07BJ1 = SMB Bulkhead Jack (30µ" (0,76 µm) Gold on Center Contact, Gold flash on Shell)</p>	
<p>-01BJ1 = SMA Straight Bulkhead Jack -01SB1 = SMA Straight Bulkhead Jack, Sealed -01SR1 = SMA Straight Bulkhead Jack, Sealed, Reversed Polarity -01BR1 = SMA Straight Bulkhead Jack, Reversed Polarity (30µ" (0,76 µm) Gold on Center Contact, Gold Flash on Shell)</p>	

END OPTIONS	
<p>-01PN1 = SMA Straight Panel Mount Jack (30µ" (0,76 µm) Gold on Center Contact, Gold Flash on Shell)</p>	
<p>-04BJ2 = BNC Bulkhead Jack (30µ" (0,76 µm) Gold on Center Contact, Nickel on Shell)</p>	
<p>-05BJ3 = TNC Bulkhead Jack (10µ" (0,25 µm) Gold on Center Contact, Nickel on Shell)</p>	
<p>-06BJ2 = N Type Bulkhead Jack (30µ" (0,76 µm) Gold on Center Contact, Nickel on Shell)</p>	

END OPTIONS			
<p>-SING = Single Ended (End 2 Callout)</p>			
<p>XXXXXX = Stripped & Tinned (End 2 Callout)</p>			
STRIPPED & TINNED (Dimensions in mm)			
CALLOUT	A	B	C
-303030	3.0	3.0	3.0
-303040	3.0	3.0	4.0
-403030	4.0	3.0	3.0
-403040	4.0	3.0	4.0
-404040	4.0	4.0	4.0
<p>Both center conductor and braid shield are stripped, only the center conductor is tinned.</p>			

Due to technical progress, all designs, specifications and components are subject to change without notice.

WWW.SAMTEC.COM

X-ON Electronics

Largest Supplier of Electrical and Electronic Components

Click to view similar products for [D-Sub Micro-D Connectors](#) category:

Click to view products by [Samtec](#) manufacturer:

Other Similar products are found below :

[003626](#) [025-1227-000](#) [0685610016](#) [0688014147](#) [0688014227](#) [07190-SP036](#) [0745461602](#) [0751341000](#) [0795762102](#) [0797580009](#)
[0834249014](#) [0836129020](#) [0836129024](#) [0836199011](#) [0887329200](#) [0897613412](#) [0923150410](#) [0923150615](#) [0923151609](#) [0923171036](#) [094-](#)
[0116-2007](#) [094-6135-0000](#) [094-6136-0000](#) [094-6235-0000](#) [094-6335-0000](#) [094-6435-0000](#) [094-6535-0000](#) [094-6635-0000](#) [094-6636-0000](#)
[094-6735-0000](#) [094-6935-0000](#) [094-6936-0000](#) [095-0605-2053](#) [095-0607-2055](#) [095479-0007](#) [095480-0011](#) [096510-0306](#) [09651226803](#)
[096513-0002](#) [096516-0222](#) [098-9027-0029](#) [10090930-P150ALF](#) [100RC21SCBR1](#) [100RC31SCBRP2](#) [100RC37PC6P1](#) [100RN31P-C6PT2](#)
[10114-3000PE](#) [10114-6000EC](#) [10114-6000EL](#) [10120-3000PE](#)