

spacer sleeves

[Brass, nickel-plated, Polyamide black]

(*Makrolon grey upon request)



Standard range – spacer sleeves [Plastic]

Technical data [Reference values]

Material	Specific contact resistance	Dielectric strength	Heat resistance
Polyamide	$> 10^{12}$ Ohm/cm	80 kV/mm	110°C
*Makrolon	$> 10^{16}$ Ohm/cm	36 kV/mm	140°C

***All Polyamide spacer sleeves are also available in Makrolon! Please quote dimensions and quantity in your inquiry!**

EXECUTION DII [Internal / internal thread]

Order No.	Execution	Material	Diameter D (mm)	Diameter d (mm)	Standard lengths in mm increments
384 / 1.5 x (length)	DH	Polyamide	4	1.5	from 2 mm to 10 mm
384 / 2.2 x	DH	Polyamide	4	2.2	from 2 mm to 50 mm
385 / 2.7 x	DH	Polyamide	5	2.7	from 2 mm to 55 mm
386 / 3.4 x	DH	Polyamide	6	3.4	from 2 mm to 60 mm
388 / 4.2 x	DH	Polyamide	8	4.2	from 2 mm to 60 mm
3810 / 5.2 x	DH	Polyamide	10	5.2	from 2 mm to 57 mm
3810 / 6.2 x	DH	Polyamide	10	6.2	from 2 mm to 55 mm
3812 / 8.2 x	DH	Polyamide	12	8.2	from 2 mm to 63 mm
3816 / 10.5 x	DH	Polyamide	16	10.5	from 2 mm to 50 mm

Ordering example: 386 / 3.4 x 25 mm = DH / Polyamide / 6 (3.4) x 25 mm

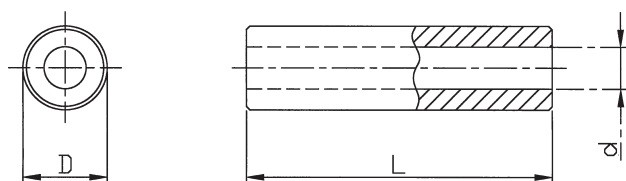


- Tolerance for length dimensions: +/- 0.1 mm

- Available from stock. Delivery times for intermediate lengths and special versions upon request.



Standard range – spacer sleeves [Brass, nickel plated]



Order No.	Execution	Material	Diameter D (mm)	Diameter d (mm)	Standard lengths in mm
314 / 2.1 x (length)	DH	Brass	4.0	2.1	2, 3, 4, 5, 6, 7, 8, 9, 10, 12,
315 / 2.6 x	DH	Brass	5.0	2.6	2, 3, 4, 5, 6, 7, 8, 9, 10, 12, 15,
316 / 3.2 x	DH	Brass	6.0	3.2	2, 3, 4, 5, 6, 7, 8, 9, 10, 12, 15, 18, 20, 25, 30
318 / 4.3 x	DH	Brass	8.0	4.3	2, 3, 4, 5, 6, 7, 8, 9, 10, 12, 15, 18, 20, 25, 30
3110 / 5.3 x	DH	Brass	10.0	5.3	2, 3, 4, 5, 6, 7, 8, 9, 10, 12, 15, 18, 20, 25, 30



X-ON Electronics

Largest Supplier of Electrical and Electronic Components

Click to view similar products for [Standoffs & Spacers](#) category:

Click to view products by [Dremec](#) manufacturer:

Other Similar products are found below :

[M0516-3-N](#) [M0518-3-N](#) [M0521-3-N](#) [M0524-3-N](#) [M0532-35-N](#) [M0543-4-AL](#) [M0544-3-N](#) [M0545-3-AL](#) [M0553-3-N](#) [M0564-4-N](#) [M0608-5-SS](#) [M0609-5-SS](#) [M0610-35-AL](#) [M0613-3-N](#) [M0653-35-N](#) [M0654-4-SS](#) [M0655-5-AL](#) [M0660-4-AL](#) [M0660-4-N](#) [M0670-35-N](#) [M0671-5-N](#) [M0671-5-SS](#) [M0722-5-N](#) [M0725-6-N](#) [M0731-4-N](#) [M0904-B-25-AL](#) [M1273-2545-AL](#) [M1273-3005-AL](#) [M1274-3005-AL](#) [M1303-3506-AL](#) [M1307-3506-AL](#) [M1313-3005-N](#) [M1313-4007-AL](#) [M1314-3005-AL](#) [M1314-3005-SS](#) [M1315-3005-SS](#) [M1315-4007-N](#) [M1317-3506-AL](#) [M1317-4007-SS](#) [M1318-3005-SS](#) [M1320-3005-AL](#) [M1320-3005-N](#) [M1321-3005-SS](#) [M1321-4007-AL](#) [M1322-4007-N](#) [M1324-3005-N](#) [M1326-3005-AL](#) [M1326-4007-SS](#) [M1331-4007-SS](#) [M1577-B-4007-B](#)