

A

B

C

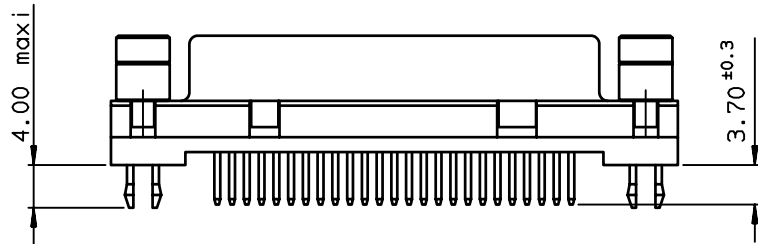
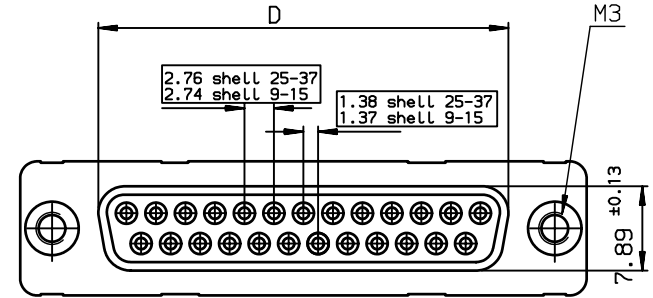
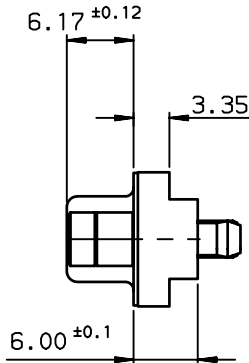
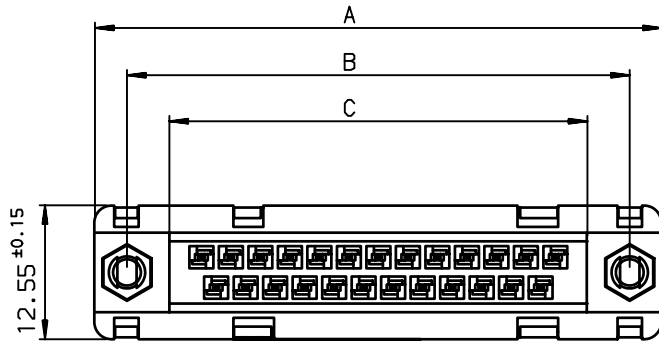
D

A

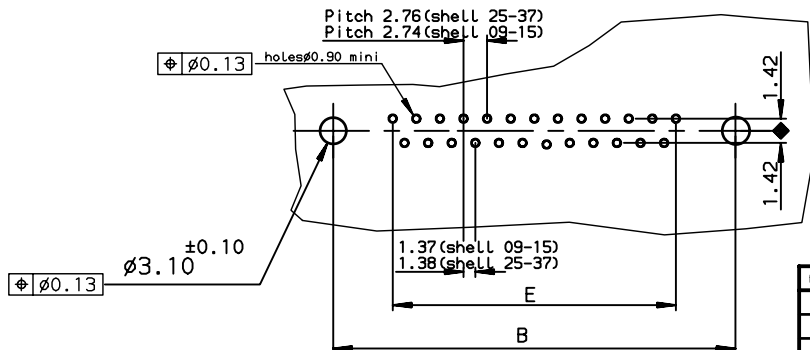
B

C

D



PC card drilling dimensions(after plating)
(thickness 2.40±0.20mm)



TIN LEAD PART NUMBER

| SHELL | A±0.38 | B±0.12 | C±0.10 | D±0.25 | E±0.07 | PART NUMBER |
|-------|--------|--------|--------|--------|--------|--------------|
| 09 | 30.81 | 24.99 | 16.96 | 16.21 | 10.96 | D09S24B6G100 |
| 15 | 39.14 | 33.32 | 25.18 | 24.54 | 19.18 | D15S24B6G100 |
| 25 | 53.03 | 47.04 | 39.12 | 38.25 | 33.12 | D25S24B6G100 |
| 37 | 69.32 | 63.50 | 55.68 | 54.71 | 49.68 | D37S24B6G100 |

LEAD FREE PART NUMBER

| SHELL | A±0.38 | B±0.12 | C±0.10 | D±0.25 | E±0.07 | PART NUMBER |
|-------|--------|--------|--------|--------|--------|----------------|
| 09 | 30.81 | 24.99 | 16.96 | 16.21 | 10.96 | D09S24B6G100LF |
| 15 | 39.14 | 33.32 | 25.18 | 24.54 | 19.18 | D15S24B6G100LF |
| 25 | 53.03 | 47.04 | 39.12 | 38.25 | 33.12 | D25S24B6G100LF |
| 37 | 69.32 | 63.50 | 55.68 | 54.71 | 49.68 | D37S24B6G100LF |

GENERAL CHARACTERISTICS AND ROHS INFORMATIONS:
SEE DRAWING C01-8646-0000

European Views

| | | | | |
|--------------------|--------|---------------------------------------|-----------------------------------|----------------------|
| www.fciconnect.com | | surface ISO 1302 ✓ | tolerance std ISO 406 ISO 1101 | projection mm |
| | | TOLERANCES UNLESS OTHERWISE SPECIFIED | | mm |
| Dr | PESSON | 18/01/31 | 0.X ±0.1 | size A3 |
| Eng | PESSON | 1997/08/25 | 0.XX ±0.1 | Scale 2 |
| Chr | LEGARE | 1997/08/25 | 0.XXX ±0.1 | ECN LS06-0089 |
| Appr | LEGARE | 1997/08/25 | Product family | D-SUB Spec ref - |
| FCI title | | FEMALE CONNECTOR STD EURO | | dwg no C01-8646-0553 |
| catalog no | | STRAOUGHT SOLDER TYPE FOR | | Rev. D |
| | | CUSTOMER | | sheet 1 of 1 |

| rev | ecn no | dr | date |
|-----|-----------|-----|------------|
| A | - | MPE | 1997/08/25 |
| B | LS05-001 | MPE | 2005/03/14 |
| C | LS05-0056 | MPE | 2005/06/24 |
| D | LS06-0089 | MPE | 2006/06/12 |
| - | - | - | - |
| - | - | - | - |
| - | - | - | - |



Copyright FCI.

X-ON Electronics

Largest Supplier of Electrical and Electronic Components

Click to view similar products for [D-Sub Micro-D Connectors](#) category:

Click to view products by [FCT Electronics](#) manufacturer:

Other Similar products are found below :

[M243082311F](#) [M2430834F](#) [M24308/4-6F](#) [65-1920-15](#) [M83513/01-HN](#) [M83513/03-A10N](#) [M83513/03-B14C](#) [M83513/03-D09C](#) [M83513/03-D11N](#) [M83513/03-G02N](#) [M83513/03-G05N](#) [M83513/03-G08C](#) [M83513/03-G09N](#) [M83513/03-G12N](#) [M83513/03-H13N](#) [M83513/04-E15N](#) [M83513/04-G04C](#) [M83513/10-E01NP](#) [M83513/13-B01NP](#) [M83513/13-C01NN](#) [M83513/16-A01CP](#) [M83513/22-D01NP](#) [M83513/25-B01NP](#) [6R2004A30F015](#) [6R4006A28A120](#) [703006A13F060](#) [704002A03F200](#) [705001A13F120](#) [7-1532020-5](#) [748567-1-P](#) [MDB1-31SH003](#) [MDM-15PBS-L58](#) [MDM-15PCBRM7T](#) [MDM-15PH003B-A174](#) [75-068624-59S](#) [MDM-15PH034B](#) [MDM-15SH001L](#) [MDM-15SH004B](#) [MDM-21PH003K](#) [MDM-25PH003B-A174](#) [MDM-25PHW01F-A174](#) [MDM-37PH006L-A174](#) [MDM-37PH048M5-A174](#) [MDM-37SCBRP-A174](#) [MDM-51PBS-L56](#) [MDM-51PSF](#) [MDM-51SH003M7](#) [MDM-51SSM7-A174](#) [MDM-9PBSP-L58](#) [MDM-9PH003M7](#)