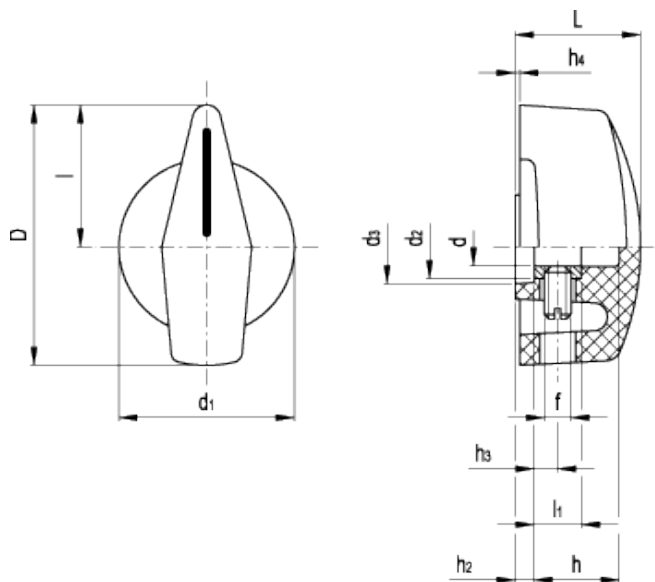


MI.204

Indicator knobs



technical informations

Material

Phenolic based (PF) Duroplast. Resistant to solvents, oils, greases and other chemical agents.

Colour

Black, glossy finish.

Index

White line.

Assembly

Brass boss, plain blind hole. Assembly by means of a transversal grub screw according to UNI - ISO 7436 (grub screw with screwdriver slotted head and cup end). Supplied assembled.

Standard Elements		Main dimensions											Mounting hole		Weight
Code	Description	D	L	d ₁	d ₂	d ₃	f	h ₂	h ₃	h ₄	l	l ₁	d _{D9}	h	g
40201	MI.204/45 B-6	45	25	35	10	15	M4	7	5	0.5	24	10	6	15	19
40202	MI.204/45 B-8	45	25	35	12	12	M4	3	5	0.5	24	10	8	18	19
40301	MI.204/55 B-6	55	26	37	12	12	M4	3	5	0.5	30	10	6	18	28
40302	MI.204/55 B-8	55	26	37	15	15	M4	3	5	0.5	30	10	8	18	30



ELESA and GANTER models all rights reserved in accordance with the law. Always mention the source when reproducing our drawings.

STANDARD MACHINE ELEMENTS WORLDWIDE

X-ON Electronics

Largest Supplier of Electrical and Electronic Components

Click to view similar products for [Knobs & Dials](#) category:

Click to view products by [Elesa & Ganter](#) manufacturer:

Other Similar products are found below :

[61-9028.20](#) [61-9028.9](#) [8529](#) [8573](#) [9-1437622-4](#) [11K5015-EMNB](#) [11K5019-ECNB](#) [11K5020-KLAB](#) [11K5028-JMNG](#) [11K5048-KMNB](#)
[11K5014-EMNB](#) [11K5015-EMNG](#) [11K5019-EMNB](#) [11K5029-KMNG](#) [P400S-08-D6-N](#) [K6510](#) [KNSL500B1/8](#) [AL811BA18](#) [420031B18](#)
[5006](#) [KB700BA1/4](#) [KS700B14](#) [411](#) [4-1437621-3](#) [420065A14AL](#) [5149A](#) [52-928.20](#) [52-928.60](#) [52-928.9](#) [8517](#) [8546](#) [8570](#) [8572](#) [H-516-3A](#)
[P861H-0X-S6](#) [8544](#) [11K5014-JMNG](#) [11K5014-KMNG](#) [11K5014-ECNG](#) [5700E](#) [KA500B18](#) [KFS600B14](#) [KN900AB14](#) [KFS500B14](#)
[KNS501B18](#) [PKD60B1018](#) [PK1100B18](#) [PKES140B14](#) [PKES150B14](#) [PKJT70B14](#)