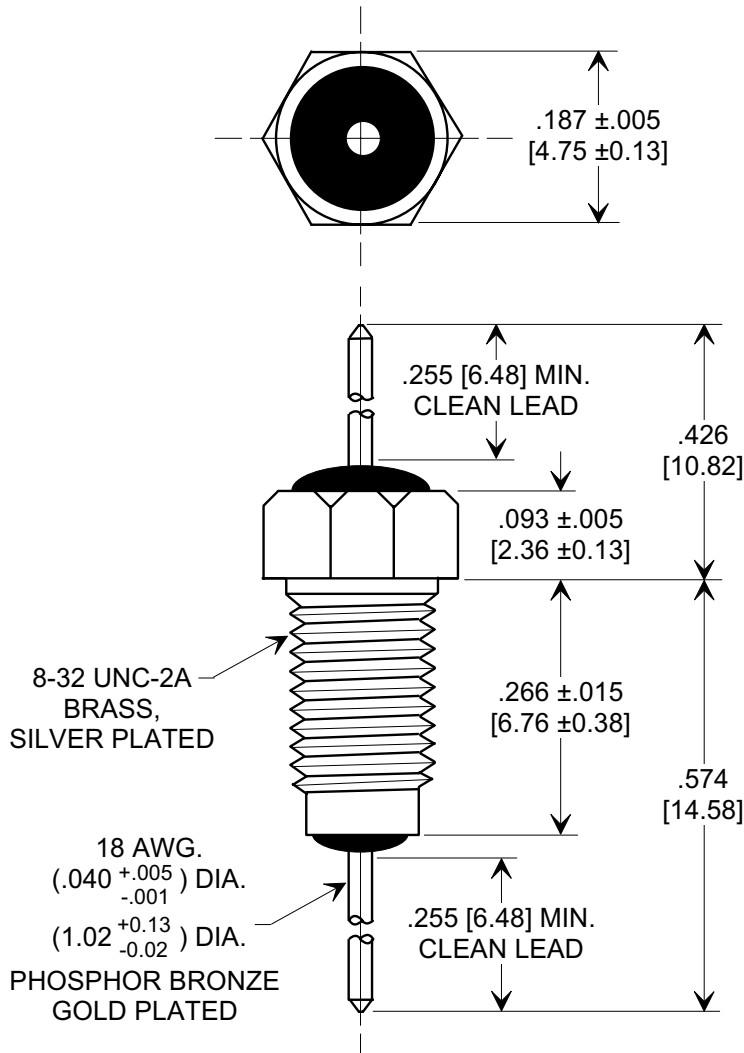
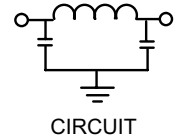
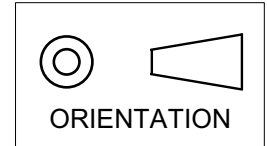


MARKETING SALES DRAWING

DIMENSIONS IN INCHES - DO NOT SCALE THIS DRAWING
DIMENSIONS IN METRIC - []

Electrical Testing
 per Tusonix standard
 test plans and Mil-Std-202
 Test Methods.



NOTES:

1. NO MOUNTING HARDWARE SUPPLIED.
2. TUSONIX STANDARD PART NUMBER: 4201-086.
 TUSONIX RoHS COMPLIANT PART NUMBER: 4201-086 LF.
 CUSTOMER MUST SPECIFY STANDARD OR RoHS PART NUMBER WHEN ORDERING.
3. PART MARKING: TRADEMARK AND VARIATION NUMBER ON HEX FLATS.
 STANDARD PART: BLACK INK. RoHS PART: GREEN INK.

| MIN. CAP. (pF) | WORKING VOLTAGE (VVdc) | | CURRENT (Idc) | I.R. MIN. @ 100 (VDC.) | DWV (VDC) | MINIMUM NO LOAD INSERTION LOSS (dB) AT 25°C PER MIL-STD -220 | | | |
|----------------|------------------------|--------|---------------|------------------------|-----------|--|---------|-------|--------|
| | 85°C | 125 °C | | | | 10 MHz | 100 MHz | 1 GHz | 10 GHz |
| 2000 | 200 | 100 | 15A | 10 G | 250 | 5 | 38 | 63 | 70 |
| | | | | | | | | | |

| | | | | | | | |
|--------------|------------------------|--|--|---|--|---|--|
| X-2015 Rev-0 | REVISION RECORD | | Original Release C.O. WAS SK 7867-000 L.E. 03-08-01 20010306-1-02 ADDED NOTES, IR, DWV & METRIC. S.M. 08-01-05 20050726-2-42 1 | --TOLERANCES-- Unless Otherwise Specified | | Title | |
| | | | | DECIMAL ± .031 [0.79] | | BUSHING STYLE EMI FILTER Drawn S.M. 01-09-01 Scale 5X Approved T.C. 01-09-01 | |
| | | | | ANGLES ± | | | |
| | | | | TUSONIX TUCSON, ARIZONA | | A | |

X-ON Electronics

Largest Supplier of Electrical and Electronic Components

Click to view similar products for [cts manufacturer](#):

Other Similar products are found below :

[744C083333JP](#) [407F11C012M0000](#) [0538-011-F-15.0-60](#) [Z3A-22IB-3-BNL](#) [4306-033](#) [CB3LV-3C-32M7680](#) [744C083222JP](#) [744C083102JP](#)
[770101223](#) [4400-506](#) [026TB32R253B1A1](#) [APF30-30-13CB/A01](#) [MXO45HST-3C-16M0000](#) [CB3-3I-24M0000](#) [ATS061C](#) [743C083104JP](#)
[744C083472JP](#) [77083103P](#) [218-10LPSTRF](#) [O7050147456MFDA4SC](#) [402WF20012IMR](#) [KFF6516A](#) [194-8MST](#) [742C083330JPTR](#) [750-](#)
[101-R120](#) [766143221GP](#) [766163470GP](#) [77061333P](#) [403C35D12M00000](#) [7609-501LF](#) [CTS-1621](#) [745C101103JP](#) [284TBCF502A26A1](#)
[766163560GP](#) [CB3-3I-20M0000](#) [4300-060LF](#) [218-4LPSTF](#) [4400-032](#) [ATS12ASM-1](#) [201XR104B](#) [770103101P](#) [209-2MSF](#) [6740-2015](#)
[CB3-3C-1M5440](#) [T8031-5V](#) [206-12ST](#) [767163104D](#) [PB1-36ND](#) [ATS049BSM-1E](#) [TX0506-1B](#)