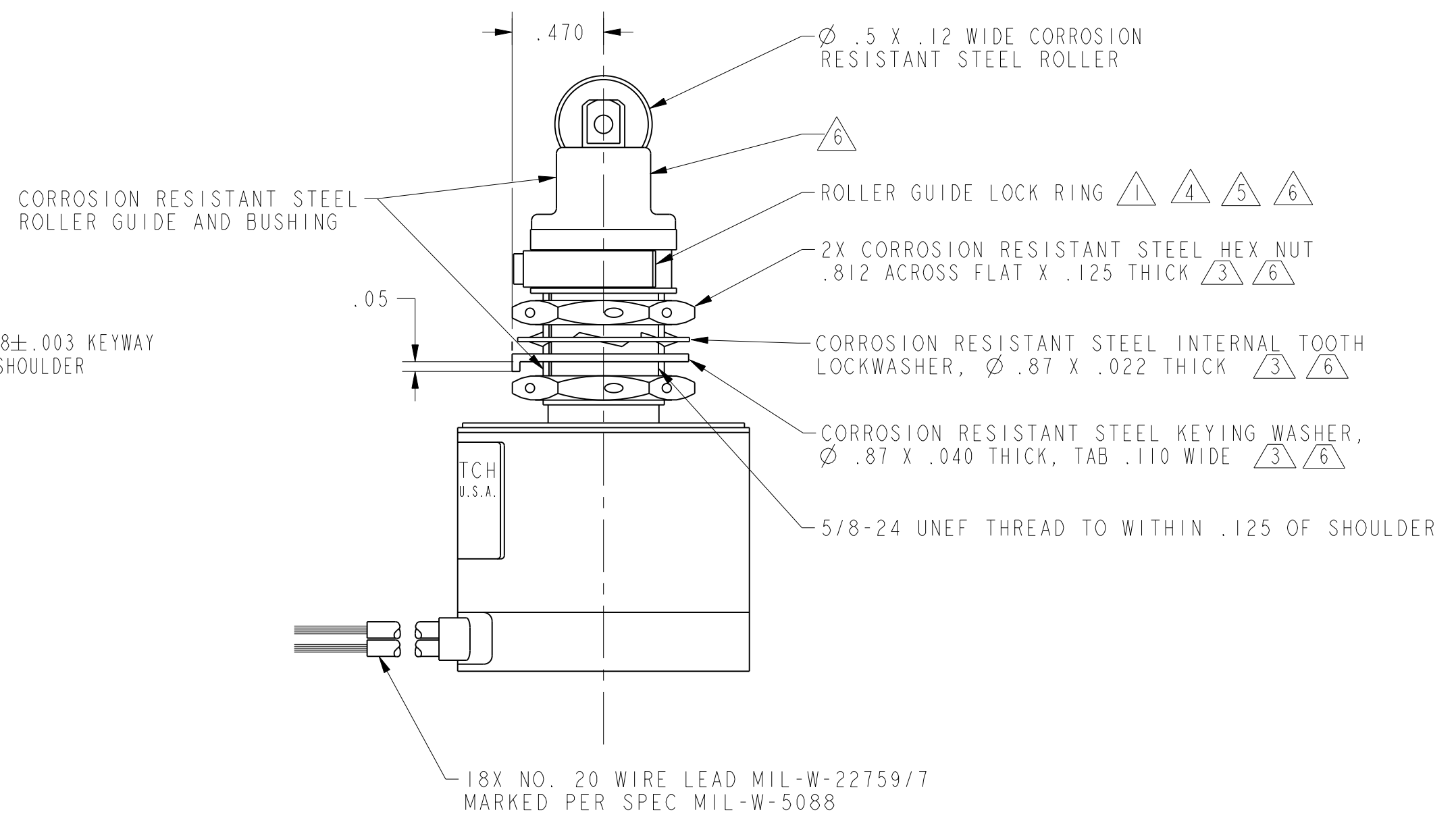
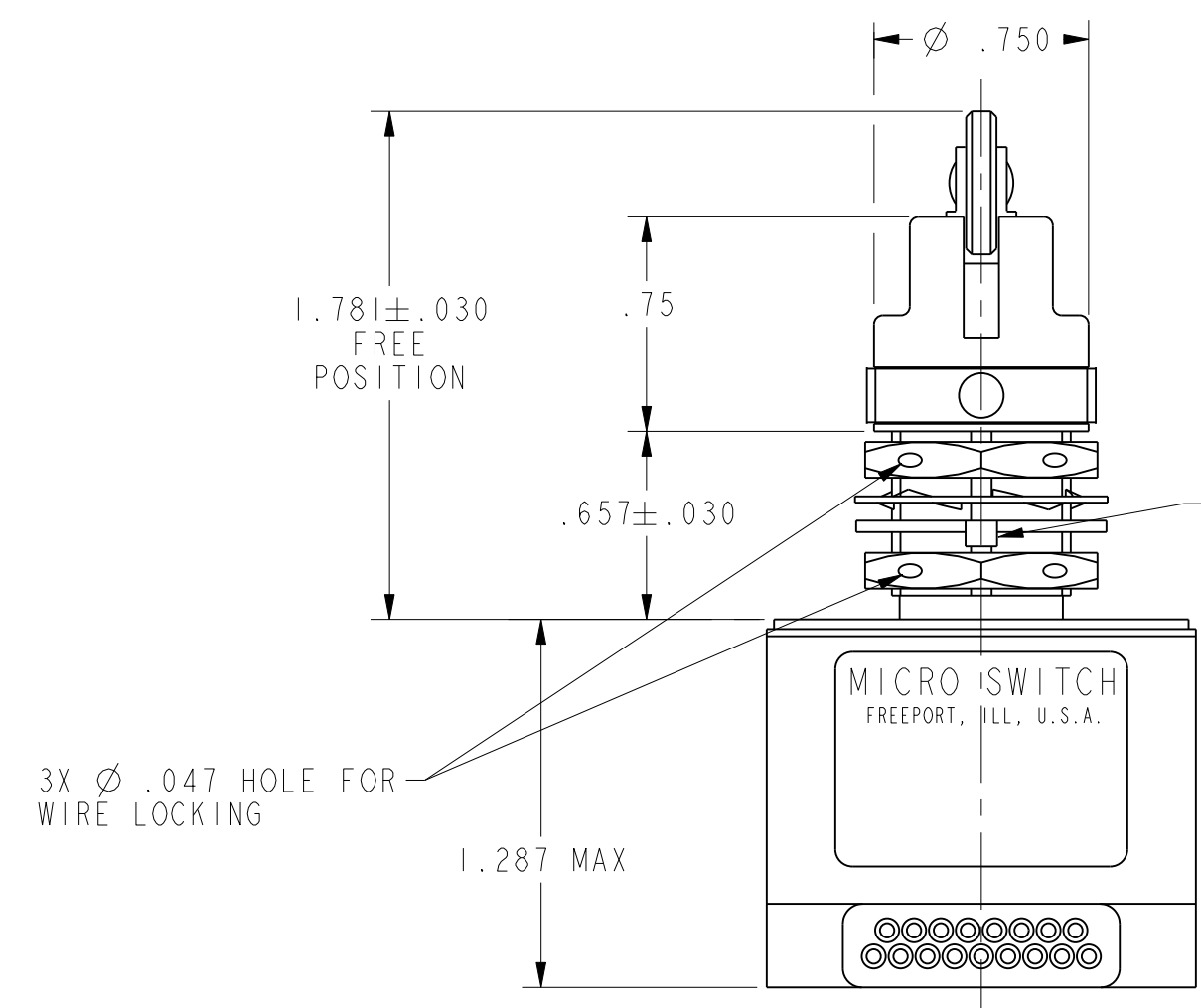
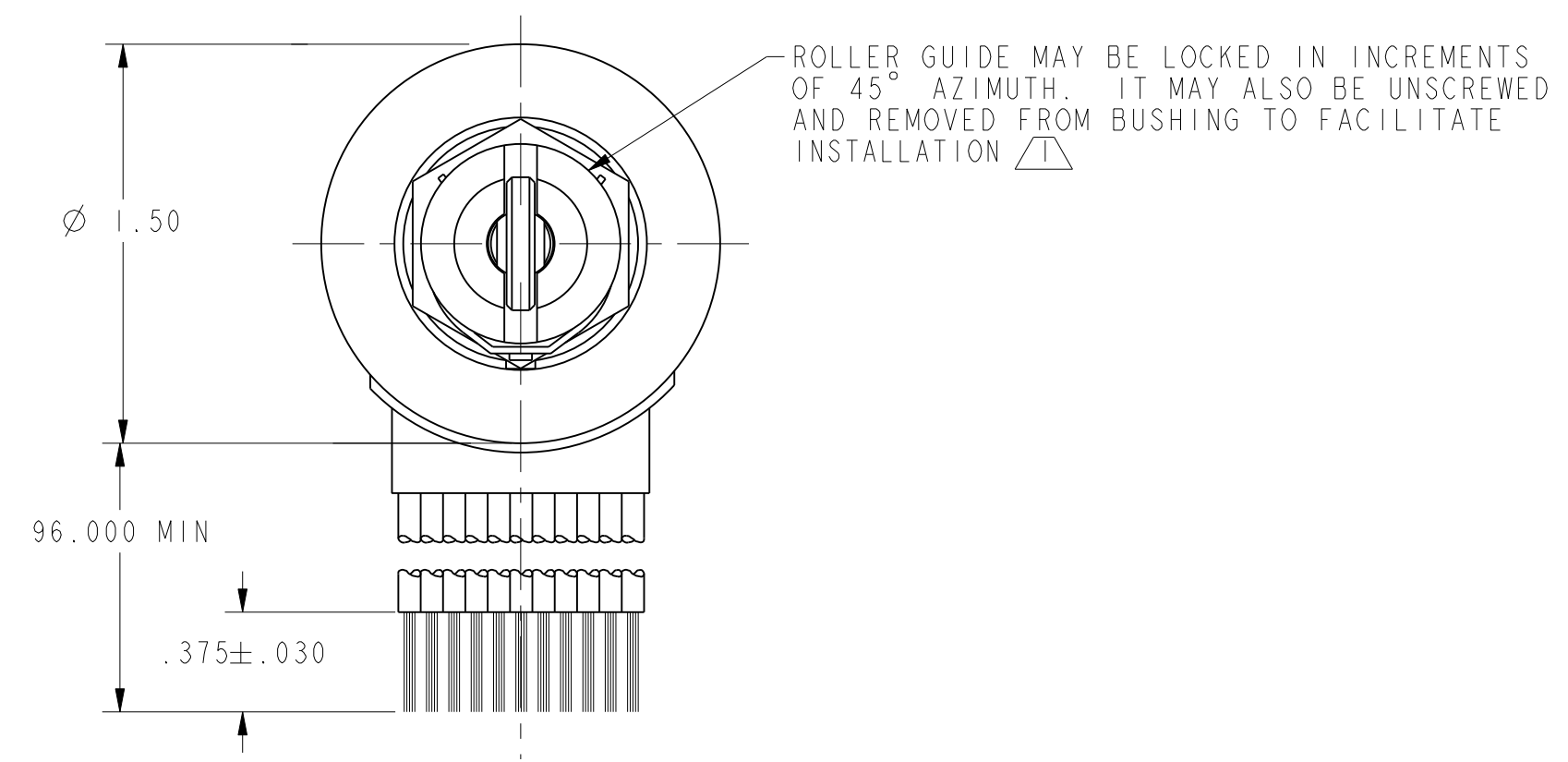


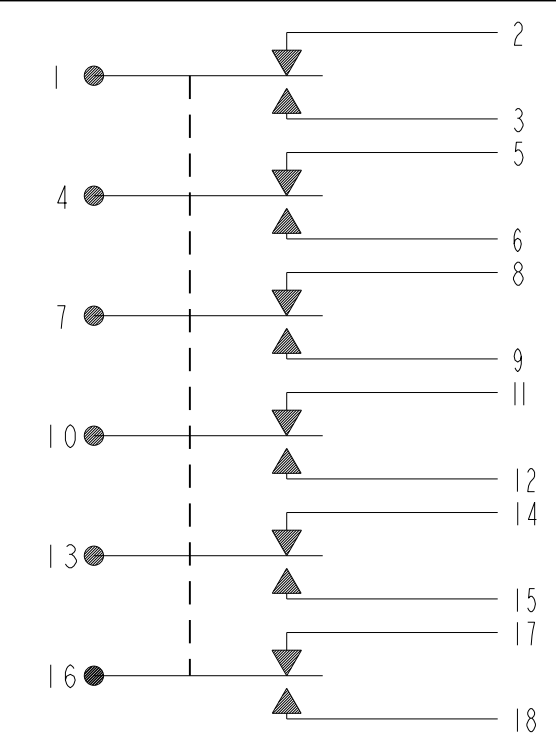
HONEYWELL
PART NUMBER
426HE13-8

REV	DOCUMENT	CHANGED BY	CHECK
D	0016259	KR 28OCT05	VA



SEE CHART FOR CONTACT MATERIAL

CIRCUIT DIAGRAM



SPECIFICATION DETAILS:					
STANDARD:		CONFORMS TO MS21321-2 (MIL-PRF-8805/39) EXCEPT AS NOTED			
CONSTRUCTION:		ENCLOSURE DESIGN: HERMETIC SEAL PER MIL-PRF-8805, SYMBOL 5			
CONTACT MATERIAL & CONFIGURATION:		SEE CIRCUIT DIAGRAM			
CIRCUIT CONFIGURATION:		S P D T (6)			
TERMINATION:		LEADWIRE PER MIL-W-22759/7			
WEIGHT:		32 OZ MAX			
O-RING MATERIAL:		SILICONE ELASTOMER			
ELECTRICAL CHARACTERISTICS:		DIELECTRIC STRENGTH & INSULATION RESISTANCE			
		DIELECTRIC STRENGTH (≈ 60 Hz FOR 5 SECONDS)		INSULATION RESISTANCE (500 VDC ±10%)	
		1000 V Rms, 500 μA (MAX LKG)		1000 megohms MIN	
SWITCH RESISTANCE:		N/A			
RECOMMENDATION FOR USE:		SEE CHART			
MAX ELECTRICAL RATINGS:		NOT RECOMMENDED: SEE CHART			
CONTACT ARRANGEMENT: 6 S P D T					
RATINGS			RATINGS		
	SEA LEVEL	50,000 FT		SEA LEVEL	50,000 FT
LOAD	28 VDC	28 VDC	LOAD	28 VDC	28 VDC
RES	SEE CHT	SEE CHT	RES	SEE CHT	SEE CHT
IND	SEE CHT	SEE CHT	IND	SEE CHT	SEE CHT
MOTOR	SEE CHT	SEE CHT	LAMP	SEE CHT	SEE CHT
MECHANICAL CHARACTERISTICS:					
CHARACTERISTICS		COINCIDENCE OF OPERATING AND RELEASING POINTS: .010 OF PLUNGER TRAVEL			
		OPERATING FORCE: 6-12 LBS			
		FULL OVERTRAVEL FORCE: 30 LBS MAX			
		RELEASE FORCE: 4 LBS MIN			
		PRETRAVEL: .040 MAX			
		DIFFERENTIAL TRAVEL: .030 MAX			
		OVERTRAVEL: .250 MIN			
MOUNTING TORQUE:		15 IN-LBS RECOMMENDED PER MIL-PRF-8805			
MOUNTING STRENGTH:		30-IN LBS MAX WILL NOT CAUSE SWITCH DAMAGE			
ACTUATOR STRENGTH:		30 LBS APPLIES IN A DIRECTION TO CAUSE SWITCH ACTUATION			
LIFE:					
MECHANICAL LIFE:		150,000 CYCLES			
ELECTRICAL LIFE AT FULL RATED LOAD:		SEE CHART			
ENVIRONMENTAL:					
TEMPERATURE RANGE:		-55° C +85° C			
ALTITUDE RANGE:		SEA LEVEL TO 50,000 FEET			
SHOCK:		PER MIL-PRF-8805 SYMBOL M - 100g			
VIBRATION:		PER BOEING D6-81926, REV B (ZONE 3, CATEGORY A)			
MOISTURE RESISTANCE:		PER MIL-PRF-8805 (10 DAY TEST)			
THERMAL SHOCK:		200 CYCLES PER MIL-PRF-8805			
SALT SPRAY:		PER MIL-PRF-8805 (96 HOUR TEST)			
PREDICTED LIFE RATINGS BEYOND MIL-PRF-8805 REQUIREMENTS:					

- NOTES
- 1 TO ADJUST ROLLER DIRECTION, REMOVE ROLLER GUIDE LOCK RING, SCREW ROLLER GUIDE DOWN AS FAR AS POSSIBLE, THEN UNSCREW TO DESIRED DIRECTION. SECURE BY REPLACING GUIDE LOCK RING
 - 2 - CIRCUIT DIAGRAM, CATALOG LISTING, FED MFG CODE, FAA-PMA & DATE CODE ARE SHOWN ON NAMEPLATE
 - 3 REPLACEMENT MOUNTING HARDWARE: PACKET 19PA8
 - 4 REPLACEMENT ROLLER GUIDE AND LOCK RING PACKET 15PA104
 - 5 REPLACEMENT LOCK RING: PACKET 15PA137
 - 6 HARDWARE MAY BE PACKAGED UNASSEMBLED PER MIL-PRF-8805
 - 7 FOR MANUFACTURING DETAL SEE ASSEMBLY DRAWING 426HE13-8 FOR FAA-PMA

CIRCUIT	CONTACT TYPE	LOAD TYPE	CURRENT (mA)			INDUCTANCE	ELECTRICAL ENDURANCE
			MIN	NOMINAL	MAX		
1-2 AND 1-3 4-5 AND 4-6 10-11 AND 10-12	GOLD BIFURCATED	INDUCTIVE	3	-	350	80 mh	150000
		RESISTIVE	1	-	40	N/A	150000
7-8 AND 7-9 13-14 AND 13-15 16-17 AND 16-18	GOLD PLATED SILVER	INDUCTIVE	-	110	-	1.5 h	150000
		INDUCTIVE	150	-	2000	180 mh	75000
		RESISTIVE	1000	-	3000	180 mh	37500
		INDUCTIVE	N/A	-	3150	180 mh	100
		RESISTIVE	1	-	50	N/A	150000

DESIGN UNITS: INCH	DRAWN: SWO/AP	21 JAN 05	Honeywell				
TOLERANCES UNLESS NOTED:	CHECK: PH/AP	21 JAN 05					
NO PLACE .x ± .040	THIS DRAWING COVERS A PROPRIETARY ITEM AND IS THE PROPERTY OF HONEYWELL. THIS DRAWING IS NOT TO BE COPIED OR USED WITHOUT THE PERMISSION OF HONEYWELL.			TITLE: SWITCH-ENCLOSED			
ONE PLACE .x ± .030				SIZE: D	TYPE: I	DRAWING NAME: 426HE13-8	REV: D
TWO PLACE .xx ± .015				Interpret per *** OTHER HONEYWELL ENGINEERING STANDARDS MAY APPLY		SCALE: 1.5:1	SHEET: 1 OF 1
THREE PLACE .xxx ± .005				Pro/ENGINEER 3D		FAA-PMA	
FOUR PLACE .xxxx ± 0.0001							
ANGLES x ± 2°							

X-ON Electronics

Largest Supplier of Electrical and Electronic Components

Click to view similar products for [Basic / Snap Action Switches](#) category:

Click to view products by [Honeywell](#) manufacturer:

Other Similar products are found below :

[83228001](#) [01.098.1358.1](#) [602EN1-6B](#) [602EN532](#) [602EN535-RB](#) [602HE5-RB1](#) [604HE162](#) [604HE223-6B](#) [624HE17-RB](#) [6HM89](#) [6PA78-JM](#)
[6SE1](#) [6SX1-H58](#) [70500840](#) [MBD5B1](#) [MBH2731](#) [73-316-0012](#) [79211759](#) [79211923](#) [79218589](#) [7AS12](#) [ML-1155](#) [ML-1376](#) [831010C3.0](#)
[831060C3.TL](#) [831090C2.EL](#) [83131904](#) [84212012](#) [8AS239](#) [8HM73-3](#) [903VB1-PG](#) [914CE1-6G](#) [PL-100](#) [11SM1077-H4](#) [11SM1077-H58](#)
[11SM1-TN107](#) [11SM405](#) [11SM703-T](#) [11SM8423-H2](#) [11SX37-T](#) [11SX48-H58](#) [11SX55-H58](#) [11SM2442-T](#) [11SM76-T](#) [11SM77-H58](#)
[11SM77-T](#) [11SM863-T](#) [11SM866](#) [11SX47-H58](#) [A7CN-1M-1-LEFT](#)