

3M™ Connector Covers

Circular and "D" Type Conductive Covers

3M Connector Covers are made of an intrinsically conductive composite material with uniformly distributed fibers. This makes the covers free of carbon black particulate and better suited to clean situations. The covers do not leave black marks and are permanently conductive.

3M™ Circular Connector Covers 4270 Series

4270 Series were designed to meet the requirements and intentions of MS90376, and MIL PRF 5501/31A or 2A. Military contractors have qualified these materials to their own specifications and are encouraging their use.



3M "D" Type Connector Covers 4272 Series

4272 Series were designed to meet the requirements and intentions of MIL-PRF-5501. Military contractors have qualified these materials to their own specifications and are encouraging their use.



Specifications

Typical Properties:

ASTM D991
FTMS 101C
Method 3005
3M
ASTM D638
ASTM D638
ASTM MD
E595

<105 ohm-cm
Pass

Not visible

25%
1500 PSI (1.0 x 107 N/m²)
1525 205°F (960C)
Pass

Chemical Reactions

Dilute Acids
Dilute Alkalines
Concentrated Acids
Concentrated Alkalines
Methanol, Ethanol, and
Isopropanol
Hydrocarbons
Ketones
Oil and Gasoline

Slight Attack
Slight Attack
Severe Attack
Severe Attack
Resistant
Slight Attack
Dissolves
Severe Attack

4270 and 4272 Series Connector Covers

PRODUCT
CONDUCTIVE CONNECTOR COVERS

ITEM NUMBER
SEE TABLE

DATASHEET
4270

3M Electronics Solutions Division
6801 River Place Blvd
Austin, TX 78726-9000
US and Canada: 866-722-3736
Fax: 866-722-3735
Int: 919-718-0000; Fax: 919-774-8174
email: 3Mstaticinfo@mmm.com; www.3Mstatic.com

3M is a trademark of 3M Company.
All other trademarks herein are the property
of their respective owners.



P R O D U C T D A T A S H E E T

See page 2 for sizes

3M™ Circular Connector Covers 4270 Series

Packaged 100/bag: 10 bags/box

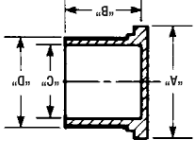
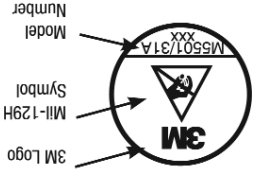
Product	A	B	C	D
Description				
4270-4R	.670	.500	.250	.336
4270-5R	.670	.500	.313	.399
4270-6R	.670	.500	.375	.461
4270-8Y	.670	.625	.413	.483
4270-8R	.740	.500	.480	.540
4270-9R	.750	.500	.500	.586
4270-10Y	.750	.625	.530	.595
4270-10R	.840	.500	.605	.665
4270-12Y	.860	.625	.655	.715
4270-12R	.970	.500	.720	.775
4270-14Y	1.031	.625	.785	.845
4270-14R	1.125	.500	.850	.905
4270-16Y	1.125	.625	.893	.963
4270-16R	1.220	.500	.973	1.035
4270-18Y	1.250	.625	1.028	1.088
4270-18R	1.330	.625	1.093	1.155
4270-19R	1.400	.625	1.125	1.213

Packaged 50/bag: 10 bags/box

Product	A	B	C	D
Description				
4270-20Y	1.406	.625	1.150	1.215
4270-20R	1.465	.625	1.231	1.301
4270-22Y	1.500	.625	1.270	1.340
4270-22R	1.590	.625	1.340	1.410
4270-24Y	1.640	.625	1.390	1.460
4270-24R	1.700	.625	1.463	1.533
4270-25Y	1.810	.625	1.540	1.580
4270-28Y	1.875	.625	1.645	1.718
4270-28R	1.950	.625	1.715	1.790

Packaged 25/bag: 10 bags/box

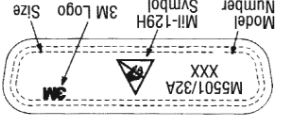
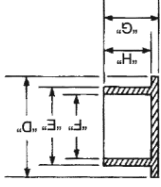
Product	A	B	C	D
Description				
4270-32Y	2.125	.625	1.890	1.970
4270-32R	2.220	.625	1.965	2.040
4270-36Y	2.340	.625	2.140	2.210
4270-36R	2.435	.625	2.215	2.290
4270-40Y	2.600	.625	2.380	2.450
4270-40R	2.660	.600	2.440	2.530
4270-44Y	2.875	.625	2.630	2.700
4270-44R	2.960	.600	2.720	2.812
4270-48Y	3.125	.625	2.880	2.950
4270-48R	3.225	.600	2.960	3.050



3M "D" Type Connector Covers 4272 Series

Packaged 100/bag: 10 bags/box

Product	A	B	C	D	E	F	G	H
Description								
4272-50P	2.112	2.179	2.279	.636	.536	.469	.280	.240
4272-50S	2.049	2.116	2.216	.574	.474	.407	.280	.240
4272-37P	2.216	2.283	2.383	.530	.430	.363	.280	.240
4272-37S	2.143	2.210	2.310	.462	.362	.295	.280	.240
4272-25P	1.586	1.635	1.735	.530	.430	.363	.280	.240
4272-25S	1.495	1.562	1.662	.462	.362	.295	.280	.240
4272-15P	1.040	1.107	1.177	.512	.436	.369	.280	.240
4272-15S	.955	1.022	1.122	.462	.362	.295	.280	.240
4272-9P	.708	.775	.849	.512	.434	.367	.280	.240
4272-9S	.627	.694	.794	.462	.362	.295	.280	.240



Warranty; Limited Remedy; Limited Liability.
 This product will be free from defects in material and manufacture as of the date of purchase. **3M MAKES NO OTHER WARRANTIES INCLUDING, BUT NOT LIMITED TO, ANY IMPLIED WARRANTY OF MERCHANTABILITY OR FITNESS FOR A PARTICULAR PURPOSE.** If this product is defective within the warranty period stated above, your exclusive remedy shall be, at 3M's option, to replace or repair the 3M product or refund the purchase price of the 3M product. **Except where prohibited by law, 3M will not be liable for any indirect, special, incidental or consequential loss or damage arising from this 3M product, regardless of the legal theory asserted.**

Important Notice
 All statements, technical information, and recommendations related to 3M's products are based on information believed to be reliable, but the accuracy or completeness is not guaranteed. Before using this product, you must evaluate it and determine if it is suitable for your intended application. You assume all risks and liability associated with such use. Any statements related to the product which are not contained in 3M's current publications, or any contrary statements contained on your purchase order shall have no force or effect unless expressly agreed upon, in writing, by an authorized officer of 3M.

3M Electronics Solutions Division
 6801 River Place Blvd
 Austin, TX 78726-9000
 US and Canada: 866-722-3736
 Fax: 866-722-3735
 Intl: 919-718-0000; Fax: 919-774-8174
 email: 3Mstatinfo@mmm.com; www.3Mstatc.com

3M is a trademark of 3M Company.
 All other trademarks herein are the property
 of their respective owners.



PRODUCT
 CONDUCTIVE CONNECTOR COVERS

ITEM NUMBER
 SEE TABLE

DATA SHEET
 4270

4270 and 4272 Series Connector Covers

P R O D U C T D A T A S H E E T

X-ON Electronics

Largest Supplier of Electrical and Electronic Components

Click to view similar products for [Circular MIL Spec Tools, Hardware & Accessories](#) category:

Click to view products by [3M](#) manufacturer:

Other Similar products are found below :

[809-199-3](#) [001104](#) [300 04](#) [600-006-16](#) [600-079-06](#) [M10-101982-143](#) [M10-101982-163](#) [M10-101983-183](#) [M10-150912-083](#) [M10-454396-008](#) [602GB18808](#) [M225201-06](#) [M24758-20E21](#) [M2887610-BC](#) [M2887615-CD](#) [M38999/9-19B](#) [62GB-812-10](#) [630A007NF083A](#) [630B007M051A](#) [630BJ003NF032H](#) [637-149NF04B](#) [M39029/29-215](#) [650FS002NF16](#) [M81969-14-02](#) [660-008NF14S7-01](#) [660-009M22H8-03](#) [660-013NF19U6-210](#) [660-015M10S6-17](#) [660-015NF10S5-01](#) [660-015NF14R3.5-01](#) [660-023NF19H6-19](#) [660-024N09S5-104](#) [660-024NF11S12-01](#) [660-024NF11S3-01](#) [660-050XM17F4-01](#) [660-068NF25R6-30G](#) [660-070M23S8-04](#) [660-073MTCH9-20](#) [M83723/60-116RC](#) [M83723/61-18W](#) [M83723/61-218R](#) [M83723/61-224W](#) [667-224NF16](#) [M85049/118S22A](#) [M85049/126S11N](#) [M85049130-07M](#) [M85049140-09BC](#) [M85049/41-16A W/B](#) [687-697NF-1](#) [M85049/75-14-1](#) [M8504980-8](#)