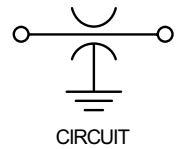
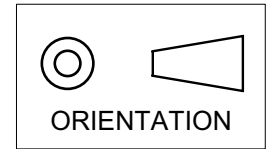


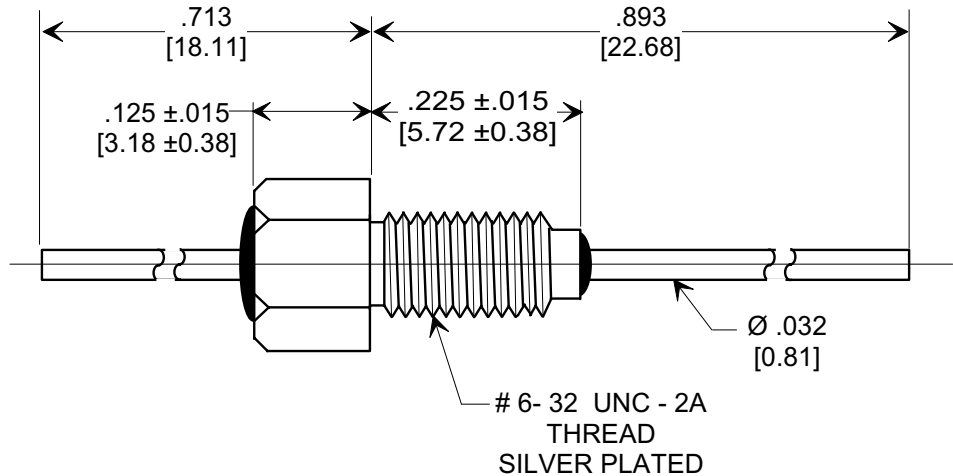
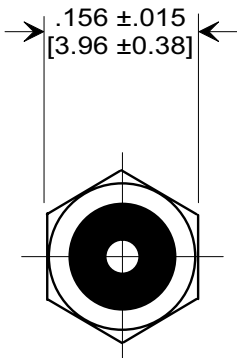
MARKETING SALES DRAWING

DIMENSIONS IN INCHES - DO NOT SCALE THIS DRAWING
DIMENSIONS IN METRIC - []

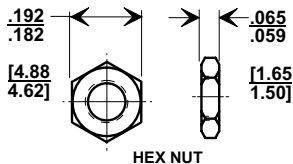
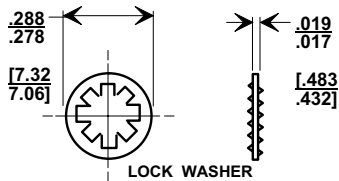
This drawing is the property of Tusonix, Inc., and may not be used, reproduced, published or disclosed to others without expressed authorization by Tusonix Inc.



Electrical Testing
per Tusonix standard
test plans and Mil-Std-202
Test Methods.



MOUNTING HARDWARE



NOTES:

1. TUSONIX STANDARD PART NUMBER: 4402-008.
 TUSONIX RoHS COMPLIANT PART NUMBER: 4402-008 LF.
 CUSTOMER MUST SPECIFY STANDARD OR RoHS PART NUMBER WHEN ORDERING.
2. BUSHING: SILVER PLATED.
3. LEAD FINISH: STANDARD PART #: 60/40 SOLDER PLATED. RoHS COMPLIANT PART #: 95.5 Sn/3.8 Ag/0.7 Cu SOLDER DIPPED.
4. PART MARKING: TRADEMARK AND VARIATION NUMBER ON HEX FLATS. STANDARD PART: BLACK INK. RoHS PART: GREEN INK.
5. OPERATING TEMPERATURE RANGE: -55°C TO +125°C.
6. MAX. RECOMMENDED MOUNTING TORQUE: 2.0 Lb.-IN.
7. MAX. RECOMMENDED SOLDERING TEMPERATURE: 260°C. SEE INSTALLATION RECOMMENDATIONS.
8. SILVER PLATED NUT AND LOCKWASHER INCLUDED.

MIN. CAP. (pf)	DC WORKING VOLTAGE	DC CURRENT (AMPS)	I.R. MIN. @ 200 (VDC)	DWV (VDC)	MINIMUM NO LOAD INSERTION LOSS (dB) AT 25°C PER MIL-STD-220				
	125 °C				1 MHz	10 MHz	100 MHz	1 GHz	10 GHz
10,000	200	10 A	100 G Ω	500	8	27	44	63	70

X-2015 Rev-0 REVISION RECORD Original Release C.O. 199803176-01 REVISED HARDWARE & [5.72] WAS [5.27]. S.M. 04-06-98 19980317-6-01 ADDED & REVISED NOTES. ADDED IR & DWV. S.M. 03-22-06 20060310-3-03	0	--TOLERANCES-- Unless Otherwise Specified	Title		
	1		BUSHING STYLE EMI FILTER		
	2	DECIMAL ± .031 [0.79]	Drawn	S.M. 03-18-98	Scale
			ANGLES ±	Approved	T.C. 03-18-98
		TUSONIX TUCSON, ARIZONA	A	4402-008	

X-ON Electronics

Largest Supplier of Electrical and Electronic Components

Click to view similar products for [cts manufacturer](#):

Other Similar products are found below :

[744C083333JP](#) [407F11C012M0000](#) [0538-011-F-15.0-60](#) [Z3A-22IB-3-BNL](#) [4306-033](#) [CB3LV-3C-32M7680](#) [744C083222JP](#) [744C083102JP](#)
[770101223](#) [4400-506](#) [026TB32R253B1A1](#) [APF30-30-13CB/A01](#) [MXO45HST-3C-16M0000](#) [CB3-3I-24M0000](#) [ATS061C](#) [743C083104JP](#)
[744C083472JP](#) [77083103P](#) [218-10LPSTRF](#) [O7050147456MFDA4SC](#) [402WF20012IMR](#) [KFF6516A](#) [194-8MST](#) [742C083330JPTR](#) [750-](#)
[101-R120](#) [766143221GP](#) [766163470GP](#) [77061333P](#) [403C35D12M00000](#) [7609-501LF](#) [CTS-1621](#) [745C101103JP](#) [284TBCF502A26A1](#)
[766163560GP](#) [CB3-3I-20M0000](#) [4300-060LF](#) [218-4LPSTF](#) [4400-032](#) [ATS12ASM-1](#) [201XR104B](#) [770103101P](#) [209-2MSF](#) [6740-2015](#)
[CB3-3C-1M5440](#) [T8031-5V](#) [206-12ST](#) [767163104D](#) [PB1-36ND](#) [ATS049BSM-1E](#) [TX0506-1B](#)