

- P/N LEGEND
- F0500 WR-S-XP N L N XX X TO R
- Series No.
 - Mounting type: S=SMT without boss
 - Connector type: WR=Right angle
 - No. of circuits
 - N=Halogen Free
 - Material: L=LCP
 - Color: N=Natural(Beige)
 - Plating code for contacts: G1=Gold-flash/G2=Gold-Plated 3u
 - Plating code for solder tabs: T1=Matte Tin-plated
 - Plating code for solder tabs: G=Gold-flash; T=Matte Tin-plated
 - Option code: T0=Top contact style
 - Packing code: R=Tape & Reel

SPECIFICATIONS

Current Rating: 0.5A AC,DC
 Voltage Rating: 50V AC,DC
 Temperature Range: -25°C ~ +85°C
 Contact Resistance: 30mΩ Max.
 Insulation Resistance: 100MΩ Min.
 Withstanding Voltage: 250V AC/minute
 Contacts: Phosphor Bronze/Gold-flash or Matte Tin-plated
 Solder Tabs: Brass/Gold-flash or Matte Tin-plated
 Housing: LCP,UL94V-0,Natural(Beige)
 Actuator: Nylon 6T,UL94V-0,Natural(Black)

Circuit		Dimensions			
No.	A	B	C	D	
04P	1.50	7.70	2.60	0.300	
05P	2.00	8.20	3.10	0.300	
06P	2.50	8.70	3.60	0.300	
07P	3.00	9.20	4.10	0.350	
08P	3.50	9.70	4.60	0.350	
09P	4.00	10.20	5.10	0.350	
10P	4.50	10.70	5.60	0.350	
11P	5.00	11.20	6.10	0.350	
12P	5.50	11.70	6.60	0.350	
13P	6.00	12.20	7.10	0.350	
14P	6.50	12.70	7.60	0.350	
15P	7.00	13.20	8.10	0.350	
16P	7.50	13.70	8.60	0.350	
17P	8.00	14.20	9.10	0.350	
18P	8.50	14.70	9.60	0.350	
19P	9.00	15.20	10.10	0.350	
20P	9.50	15.70	10.60	0.350	
21P	10.00	16.20	11.10	0.350	
22P	10.50	16.70	11.60	0.350	
23P	11.00	17.20	12.10	0.350	
24P	11.50	17.70	12.60	0.350	
Circuit		Dimensions			
No.	A	B	C	D	
25P	12.00	18.20	13.10	0.350	
26P	12.50	18.70	13.60	0.350	
27P	13.00	19.20	14.10	0.350	
28P	13.50	19.70	14.60	0.350	
29P	14.00	20.20	15.10	0.350	
30P	14.50	20.70	15.60	0.350	
31P	15.00	21.20	16.10	0.350	
32P	15.50	21.70	16.60	0.350	
33P	16.00	22.20	17.10	0.350	
34P	16.50	22.70	17.60	0.350	
35P	17.00	23.20	18.10	0.350	
36P	17.50	23.70	18.60	0.350	
37P	18.00	24.20	19.10	0.350	
38P	18.50	24.70	19.60	0.350	
39P	19.00	25.20	20.10	0.350	
40P	19.50	25.70	20.60	0.350	
45P	22.00	28.20	23.10	0.350	
49P	24.00	30.20	25.10	0.350	
50P	24.50	30.70	25.60	0.350	
51P	25.00	31.20	26.10	0.350	

REV.	A2	EN160811002	2016.03.11	徐雷水	X.XX±0.05	ANGLE
REV.	A0	NEW RELEASE	2012.08.01	權生新	X.XX±0.15	GENERAL TOLERANCE
REV.	A2				X.XX±0.25	

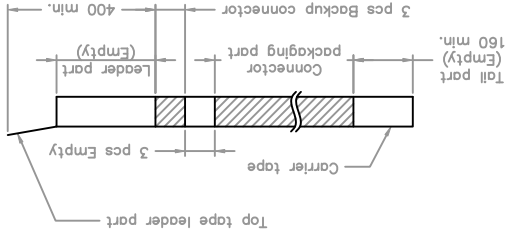
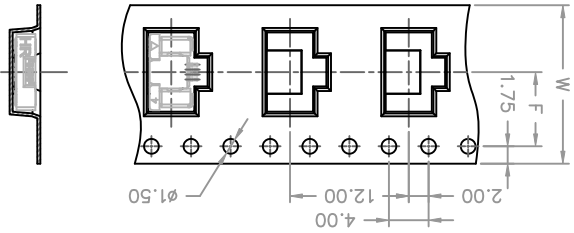
DRAWN BY	權生新	2012.08.01	2012.08.01	2012.08.01	2012.08.01
APPROVED BY	權生新	2012.08.01	2012.08.01	2012.08.01	2012.08.01
SCALE	1:1	1:1	1:1	1:1	1:1
SHEET	1	1	1	1	1
UNIT	mm	mm	mm	mm	mm

TITLE: 燦達電子工業股份有限公司
 JOINT TECH ELECTRONIC IND. CO., LTD.
 FFC/FPC CONNECTOR
 90° SMT TYPE, ZIF,
 TOP CONTACT STYLE
 0.50mm PITCH

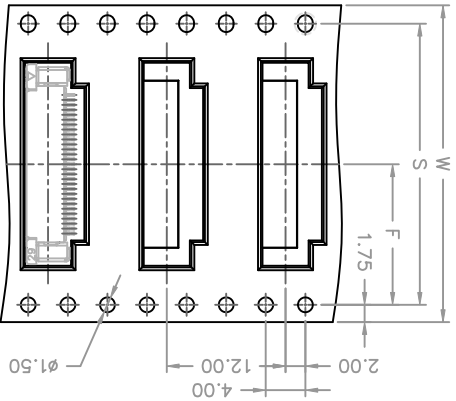
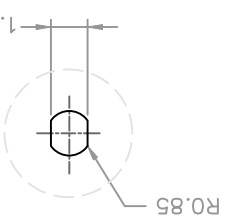
DRAW NO.: F0500WR-S-XPXXXXXXTOX
 REV. A2



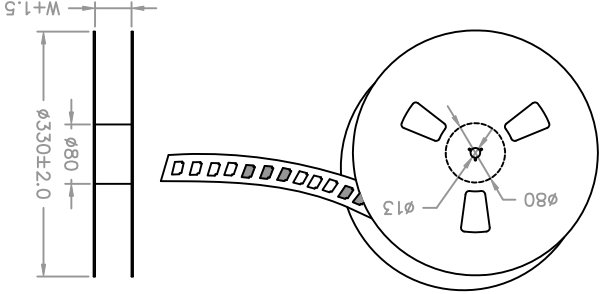
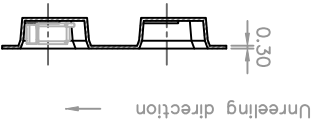
04~21 Contacts



Q'ty/Reel	Q'ty/Reel	Number of	Q'ty/Reel	Number of	Q'ty/Reel
16	7.50	25P	1,500	25P	1,500
16	7.50	26P	1,500	26P	1,500
24	11.50	27P	1,500	27P	1,500
24	11.50	28P	1,500	28P	1,500
24	11.50	29P	1,500	29P	1,500
24	11.50	30P	1,500	30P	1,500
24	11.50	31P	1,500	31P	1,500
24	11.50	32P	1,500	32P	1,500
24	11.50	33P	1,500	33P	1,500
24	11.50	34P	1,500	34P	1,500
24	11.50	35P	1,500	35P	1,500
24	11.50	36P	1,500	36P	1,500
24	11.50	37P	1,500	37P	1,500
24	11.50	38P	1,500	38P	1,500
24	11.50	39P	1,500	39P	1,500
24	11.50	40P	1,500	40P	1,500
24	11.50	41P	1,500	41P	1,500
24	11.50	42P	1,500	42P	1,500
24	11.50	43P	1,500	43P	1,500
24	11.50	44P	1,500	44P	1,500
24	11.50	45P	1,500	45P	1,500
24	11.50	46P	1,500	46P	1,500
24	11.50	47P	1,500	47P	1,500
24	11.50	48P	1,500	48P	1,500
24	11.50	49P	1,500	49P	1,500
24	11.50	50P	1,500	50P	1,500
24	11.50	51P	1,500	51P	1,500
28.40	28.40	52P	1,500	52P	1,500
14.20	14.20	53P	1,500	53P	1,500
14.20	14.20	54P	1,500	54P	1,500
28.40	28.40	55P	1,500	55P	1,500
14.20	14.20	56P	1,500	56P	1,500
14.20	14.20	57P	1,500	57P	1,500
28.40	28.40	58P	1,500	58P	1,500
14.20	14.20	59P	1,500	59P	1,500
14.20	14.20	60P	1,500	60P	1,500
24	7.50	04P	1,500	04P	1,500
16	7.50	05P	1,500	05P	1,500
24	11.50	06P	1,500	06P	1,500
24	11.50	07P	1,500	07P	1,500
24	11.50	08P	1,500	08P	1,500
24	11.50	09P	1,500	09P	1,500
24	11.50	10P	1,500	10P	1,500
24	11.50	11P	1,500	11P	1,500
24	11.50	12P	1,500	12P	1,500
24	11.50	13P	1,500	13P	1,500
24	11.50	14P	1,500	14P	1,500
24	11.50	15P	1,500	15P	1,500
24	11.50	16P	1,500	16P	1,500
24	11.50	17P	1,500	17P	1,500
24	11.50	18P	1,500	18P	1,500
24	11.50	19P	1,500	19P	1,500
24	11.50	20P	1,500	20P	1,500
24	11.50	21P	1,500	21P	1,500
24	11.50	22P	1,500	22P	1,500
24	14.20	23P	1,500	23P	1,500
32	14.20	24P	1,500	24P	1,500
28.40	28.40	25P	1,500	25P	1,500



22~51 Contacts



REV.	DESCRIPTION	DATE	NAME	X, Y	ANGLE
A2	EN1603110002	2016.03.11	徐富水	X:±0.25	
A0	NEW RELEASE	2012.08.01	權生新	X:±0.15	
				X:±0.05	

UNIT	SCALE	SHEET
mm	1 : 1	2 of 2

DRAWN BY	APPROVED BY	DATE	GENERAL TOLERANCE
權生新	修正一	2012.08.01	

TITLE:
0.50mm PITCH FFC/PPC CONNECTOR 90° SMT TYPE, ZIF, TOP CONTACT STYLE, TAPING SPEC.

REV.	DRAW NO.:
A2	F0500WR-S-XPXXXXXXXXXX

燦達電子工業股份有限公司
JOINT TECH ELECTRONIC IND. CO., LTD.

X-ON Electronics

Largest Supplier of Electrical and Electronic Components

Click to view similar products for [FFC & FPC Connectors](#) category:

Click to view products by [Joint manufacturer](#):

Other Similar products are found below :

[HFW11R-1STE1H1LF](#) [FH29B-100S-0.2SHW\(99\)](#) [FA5S008HP1](#) [FH29B-120S-0.2SHW\(99\)](#) [FH29B-80S-0.2SHW\(99\)](#) [FHS-16](#) [FPH-2022G](#)
[52610-1075](#) [52610-1275](#) [52610-1934](#) [XF3M\(1\)-1415-1B-R100](#) [501864-3091-TR225](#) [0525594033](#) [086210010340800](#) [086222026001800](#)
[52271-2869-CUT-TAPE](#) [62674-201121DLF](#) [62684-36210E9ALF](#) [52610-1675](#) [52746-1671-TR250](#) [10051922-2810EHLF](#) [6-520415-9](#)
[BD021-09A-A1-0350-0200-0550-LD](#) [SFV6R-1STE9HLF](#) [XF3M-2915-1B-R100](#) [1658549-1](#) [62674-221121ALF](#) [46214008010800](#)
[046298003000883](#) [151660622](#) [842-816-2630-035](#) [AYF530665TA](#) [AYF351525](#) [046296011930846+](#) [AYF352325A](#) [046254020000800+](#)
[FH19C-13S-0.5SH\(99\)](#) [FH39J-51S-0.3SHW\(99\)](#) [AYF355125A](#) [AYF530365TA](#) [FH29B-44S-0.2SHW\(99\)](#) [SFW5R-2STAE9LF](#) [AYF351125A](#)
[AYF350725A](#) [62684-502100AHLF](#) [FH39-61S-0.3SHW\(99\)](#) [AYF414035A](#) [10064555-172520HLF](#) [AYF212335A](#) [504754-2500](#)