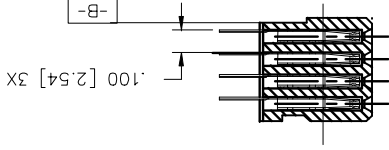
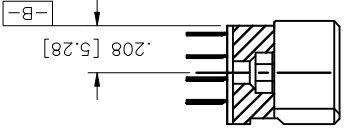


PRODUCT NUMBER
SEE TABLE

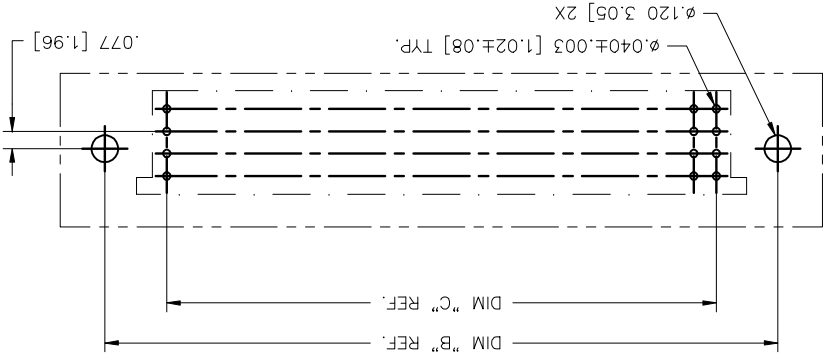


SECTION X-X



SECTION U-U

RECOMMENDED PCB LAYOUT
(ALL HOLES LOCATED ON .100/2.54 GRID
UNLESS OTHERWISE SPECIFIED)



⑧ PLATING OPTION:
INFRA-RED OR VAPOR PHASE REFLOW OVEN.

7. THIS HOUSING WILL WITHSTAND EXPOSURE TO 260. C PEAK TEMPERATURE FOR 10-30 SECONDS IN A CONVECTION, AS DESCRIBED IN GS-22-008.

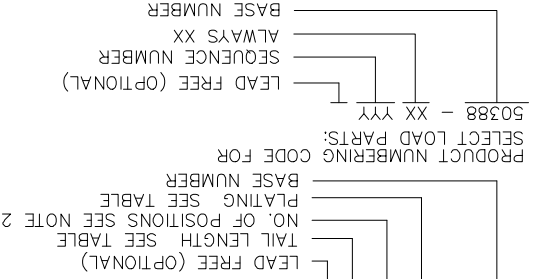
6. THIS PRODUCT (WITH "LF" SUFFIX) MEETS EUROPEAN UNION DIRECTIVES AND OTHER COUNTRY REGULATIONS

5. LENGTH FORMULAS
DIM A = .100/2.54 X NO. OF COLUMNS + .75/19.1
DIM B = .100/2.54 X NO. OF COLUMNS + .45/11.4
DIM C = .100/2.54 X NO. OF COLUMNS - .10/2.5

4. MANUFACTURER'S NAME, P/N AND LOT CODE TO APPEAR ON THIS SURFACE AS PER BUS-12-108.

3. HOUSING MATERIAL: GLASS AND MINERAL FILLED HIGH TEMP. THERMOPLASTIC, FLAME RETARDANT PER UL94V-0. COLOR: BLACK.
CONTACT MATERIAL: BeCu

2. THIS PRODUCT IS CONFIGURED IN SIZES OF 10 THRU 80 COLUMNS IN INCREMENTS OF ONE. Part numbers: 10, 11, 12, 13, 15, 16, 17, 18, 19, 20, 21, 22, 23, 24, 25, 26, 27, 28, 29, 30, 31, 32, 33, 34, 35, 36, 37, 38, 39, 40, 41, 42, 43, 44, 45, 46, 47, 48, 49, 50, 51, 52, 53, 54, 55, 56, 57, 58, 59, 60, 61, 62, 63, 64, 65, 66, 67, 68, 69, 70, 71, 72, 73, 74, 75, 76, 77, 78, 79, 80.



1. PRODUCT NUMBERING CODE:
50388 - X YY Z LF

NOTES:

mat'l code	NOTE 3	surface	ISO 1302	ISO 1007	ISO 406
projection	projection	product family	HPC	title	INCH/MM
angles	linear	linear	XXXX.000/XXXA.13	XXXX.000/XXXH.051	scale 1:1
0 +.2	D.SHEAFER	10/7/92	appd	S.CLARK	10/7/92
revision	revision	sheet	sheet	sheet	sheet
type	Product Customer Drawing	type	Product Customer Drawing	type	Product Customer Drawing
dwg no	50388	dwg no	50388	dwg no	50388
sheet	2 of 3	sheet	2 of 3	sheet	2 of 3
size	A3	size	A3	size	A3

PRODUCT NUMBER	NUMBER OF POSITIONS SEE NOTE 2	TAIL LENGTH	TAIL PLATING	CONTACT PLATING
50388-11YFE	YYY	1.25±.010/3.18±0.25	TIN LEAD	30u"/.76u Au
50388-11YFH	YYY	1.45±.010/3.68±0.25	TIN LEAD	30u"/.76u Au
50388-11YH	YYY	1.80±.010/4.57±0.25	TIN LEAD	30u"/.76u Au
50388-11YZZ	YYY	2.20±.010/5.59±0.25	TIN LEAD	30u"/.76u Au
50388-3YYYE	YYY	1.25±.010/3.18±0.25	TIN LEAD	50u"/1.27u Au
50388-3YYYF	YYY	1.45±.010/3.68±0.25	TIN LEAD	50u"/1.27u Au
50388-3YYYH	YYY	1.80±.010/4.57±0.25	TIN LEAD	50u"/1.27u Au
50388-3YYYZ	YYY	2.20±.010/5.59±0.25	TIN LEAD	50u"/1.27u Au
50388-5YYYE	YYY	1.25±.010/3.18±0.25	TIN LEAD	30u"/.76u GXT
50388-5YYYF	YYY	1.45±.010/3.68±0.25	TIN LEAD	30u"/.76u GXT
50388-5YYYH	YYY	1.80±.010/4.57±0.25	TIN LEAD	30u"/.76u GXT
50388-5YYYZ	YYY	2.20±.010/5.59±0.25	TIN LEAD	30u"/.76u GXT

mat'l. code		NOTE 3		surface		ISO 1302		ISO 1507		projection		product family		HPC	
ltf	ecn no	dr	date	tolerances unless otherwise specified		XXF.DI/XXF.3		XXF.DI/XXF.3		INCH/MM		title		4 ROW VERTICAL RECEPTACLE	
angles		linear		XXXXX.XXX/XXXXX.XXX		XXXXX.XXX/XXXXX.XXX		scale 1:1		SOLDER TO BOARD, 0 GUIDE PIN		dwg no		50388	
0±.2°		D.SHEARFER		10/7/92		10/7/92		10/7/92		10/7/92		sheet		3 of 3 size	
appd		S.CLARK		10/7/92		10/7/92		10/7/92		10/7/92		revision		Product Customer Drawing	
ctf		S.CLARK		10/7/92		10/7/92		10/7/92		10/7/92		sheet		A3	
engr		S.CLARK		10/7/92		10/7/92		10/7/92		10/7/92		index			

X-ON Electronics

Largest Supplier of Electrical and Electronic Components

Click to view similar products for [High Speed/Modular Connectors](#) category:

Click to view products by [FCT Electronics](#) manufacturer:

Other Similar products are found below :

[2332816-1](#) [89006-1137LF](#) [650827-1](#) [65762-001LF](#) [73474-201LF](#) [74040-1346](#) [74075-0267](#) [88911-201LF](#) [9514M0C20D](#) [1410191-1](#)
[1410337-1](#) [1410368-3](#) [1410964-2](#) [1410326-3](#) [1410367-3](#) [1410971-4](#) [1467833-1](#) [2000877-1](#) [2000878-1](#) [2041314-1](#) [2065387-1](#) [2187307-1](#)
[2187462-1](#) [2226278-6](#) [KA81-07](#) [91290-101LF](#) [1934290-1](#) [2000875-1](#) [2065917-1](#) [2102736-2](#) [FSR-40](#) [2169868-2](#) [2226279-2](#) [22354-8](#) [437-](#)
[5040-000](#) [5-1393565-0](#) [532449-3](#) [532803-2](#) [34745-0001](#) [0740618502](#) [0760151403](#) [0760551105](#) [0760551608](#) [0761451128](#) [0761651124](#)
[0761655108](#) [0761659807](#) [0769853208](#) [0736440217](#) [0758324203](#)