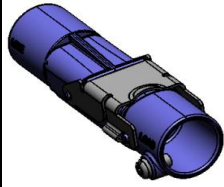




**MET-CON FLEXIBLE CONDUIT
CONNECTOR**



FEATURES/BENEFITS:



- CONNECTOR LATCH ALLOWS TOOL FREE LED MODULE REPLACEMENT
- METAL ENCLOSURE PROVIDES CODE COMPLIANT USE IN AIR HANDLING SPACE
- TOOL FREE LATCH DESIGN HOLDS SECURELY TO MEET UL 1598
- CONNECTS TO FLEX CONDUIT USING STANDARD INDUSTRY SCREW CAPTURE

ELECTRICAL:

WIRING CLASS: CLASS 2 ONLY
 VOLTAGE: 0-30 V AC/DC OR AS ALLOWED BY NEC FOR CLASS 2
 CURRENT RATED DEVICE: 3 AMPS MAX (SEE 182S OR 186 SPEC SHEET FOR DETAILS)

MECHANICAL:

LATCH RETENTION: 35 LB (157 N) MIN
 FLEX CONDUIT RANGE: 5/16" TO 3/8"

PHYSICAL:

HOUSING: ZINC ALLOY
 LATCH: STAINLESS STEEL
 PLATING: NONE
 TEMPERATURE: 105 C (221 F)
 COLOR: SILVER
 POLARIZED: YES

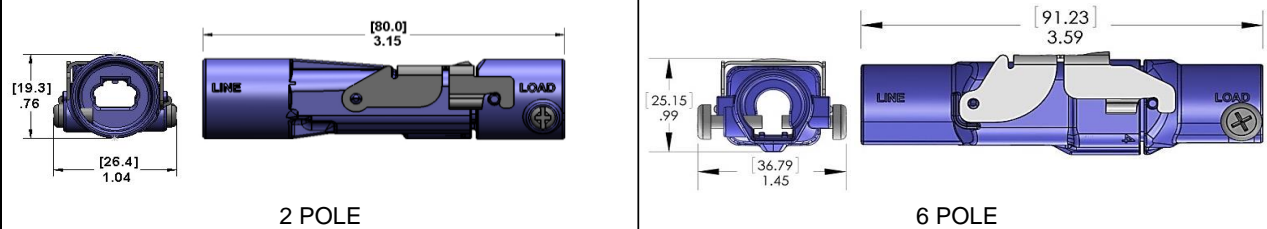
STANDARDS & SPECIFICATIONS:

UL COMPONENT RECOGNITION TO UL 1598
 RoHS COMPLIANT
 US PATENT #8,323,048

WIRE RANGE:

	MODEL 182S	MODEL 186
SOLID	18 AWG - 22 AWG	18 AWG
STRANDED	18 AWG (≤ 16 STRANDS)	N/A
TIN BONDED	18 AWG - 22 AWG (≤ 16 STRAND)	18 AWG (≤ 16 STRAND)

DIMENSIONS:



ORDERING INFO:

CATALOG #	CIRCUITS	DESCRIPTION	PACKAGE TYPE:	WEIGHT LBS (KG):
50-682SM	2	MALE HALF	250 PIECE CARTON	13.3 (6.0)
50-682SF	2	FEMALE HALF	250 PIECE CARTON	28.2 (12.8)
50-686SM	6	MALE HALF	250 PIECE CARTON	19.3 (8.8)
50-686SF	6	FEMALE HALF	250 PIECE CARTON	30.4 (13.8)

FACTORY CONTACT:

ENGINEERED SOLUTIONS
 IDEAL INDUSTRIES, INC.
 BECKER PLACE SYCAMORE IL
 USA 60178
 P: 1-800-324-9571
 F: 1-888-222-6140
 E: oem@idealindustries.com

SALES CONTACT:

X-ON Electronics

Largest Supplier of Electrical and Electronic Components

Click to view similar products for [Complete Assemblies for Panel Mount Indicator Lamps](#) *category:*

Click to view products by [Ideal Industries](#) *manufacturer:*

Other Similar products are found below :

[177-8430-0932-503](#) [250-7558-3331-504](#) [177-8430-0931-503](#) [249-7841-0937-574](#) [270-1930-0272-702](#) [367-8430-0933-503](#) [367-8430-0931-503](#) [367-8430-0973-503](#) [450-01RB](#) [803-1710-0333-805](#) [39-1752-24](#) [50-2101CR](#) [39-5644-05](#) [50-682SF](#) [803-1710-0333-504](#) [19-3206-05-303](#) [50-2100LN](#) [249-7841-1433-574](#) [LC12CN2](#) [50-2100MR](#) [1132937200](#) [13788360931552](#) [095042809201](#) [13788360937552](#) [0510111303](#) [0510135203](#) [24978661435514](#) [27018300171702](#) [27019300111702](#) [27018300111702](#) [27019303111702](#) [80317100337504](#) [80417100333504](#) [80317100332804](#) [930404X724WN](#) [047-0901-2900-201](#) [051-3502-0137-203](#) [103-3527-05-103](#) [249-7841-0933-544](#) [249-7841-0933-574](#) [249-7841-0935-574](#) [249-7841-1433-544](#) [249-7841-1435-574](#) [249-7841-1436-574](#) [249-7841-1437-544](#) [249-7841-1437-574](#) [249-7866-0331-514](#) [249-7866-0931-514](#) [249-7866-1433-514](#) [249-7866-1437-514](#)