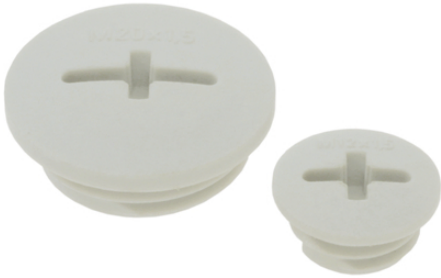


SKINDICHT® BLK-M

SKINDICHT® BLK-M, blind plugs for closing pre-threaded holes, cost-effective solution, renamed into SKINTOP® PLUG



Waterproof



UV-resistant



Reliability

Benefits

For closing pre-threaded holes
Cost-effective solution

Application range

Control cabinet manufacturing
Distribution box
Junction boxes

Product Make-up

Metric connection thread acc. to DIN EN 60423
Basis for technical information DIN IEC 62444

SKINDICHT® BLK-M**Technical Data**

| | |
|------------------------|---|
| Classification ETIM 5: | ETIM 5.0 Class-ID: EC000032 ETIM 5.0 Class-Description: Plug for cable screw gland |
| Classification ETIM 6: | ETIM 6.0 Class-ID: EC000032 ETIM 6.0 Class-Description: Plug for cable screw gland |
| Colour delivered: | Light grey (RAL 7035) |
| Material: | Fire behaviour according to UL 94 HB Impact-resistant polystyrene |
| Protection rating: | IP 54 IP 68 (with O-Ring) |
| Temperature range: | -25°C to +60°C |

Note

Photographs and graphics are not to scale and do not represent detailed images of the respective products.
Prices are net prices without VAT and surcharges. Sale to business customers only.

| Article number | Article designation / size | Thread length, D (mm) |
|------------------|----------------------------|-----------------------|
| SKINDICHT® BLK-M | | |
| 52006600 | M 12 x 1,5 | 6 |
| 52006610 | M 16 x 1,5 | 6 |
| 52006620 | M 20 x 1,5 | 6 |
| 52006630 | M 25 x 1,5 | 8 |
| 52006640 | M 32 x 1,5 | 8 |
| 52006650 | M 40 x 1,5 | 8 |
| 52006660 | M 50 x 1,5 | 10 |
| 52006670 | M 63 x 1,5 | 12 |

Last Update (23.02.2018)

©2018 Lapp Group - Technical changes reserved

Product Management www.lappkabel.de

You can find the current technical data in the corresponding data sheet.

PN 0456 / 02_03.16

X-ON Electronics

Largest Supplier of Electrical and Electronic Components

Click to view similar products for [Cable Glands, Strain Reliefs & Cord Grips](#) category:

Click to view products by [Lapp Kabel](#) manufacturer:

Other Similar products are found below :

[120-116-1-1-20BP](#) [120-116-1-1-32BE](#) [120-117-40](#) [120-123-14](#) [120-123-16](#) [120-125-16](#) [120-125-16R](#) [120-125-16Y](#) [120-125-24Y](#) [120-125-28](#) [120-125-28R](#) [120-125-32](#) [120-125-32R](#) [120-125-40](#) [120-125-56](#) [120-126-14](#) [120-126-16](#) [120-126-20](#) [120-126-20BL](#) [120-126-20R](#) [120-126-24](#) [120-126-28](#) [120-126-32](#) [120-126-40BL](#) [120-116-1-1-06BP-509](#) [120-116-1-1-06CP](#) [120-116-1-1-16BE](#) [120-116-1-1-28BP](#) [120-123-20](#) [120-123-24](#) [120-123-32](#) [120-125-20](#) [120-125-20Y](#) [120-125-24](#) [120-125-24R](#) [120-125-28Y](#) [120-126-14BL](#) [120-126-16R](#) [120-126-16Y](#) [120-126-24BL](#) [120-126-28BL](#) [120-126-32BL](#) [120-126-40](#) [120-126-48](#) [120-126-48BL](#) [1300980012](#) [1300980105](#) [DBZM-6828](#) [1498](#) [15190-103 R2](#)