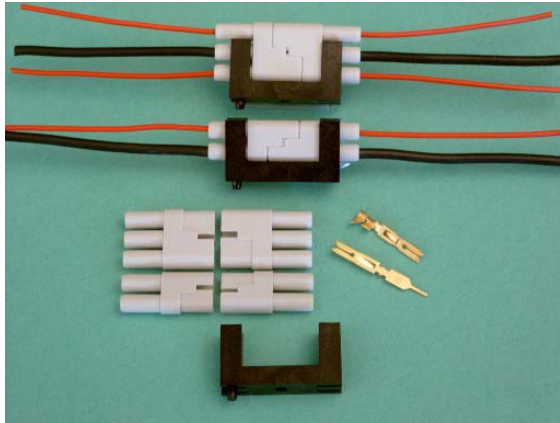


520 Series Panel Connector



Part Numbers

520-210-002	2 circuit housing
520-210-003	3 circuit housing
520-220-001	Retention clip

Contact code (order separately):

516-290-500	Wire hole
516-290-542	Wire wrap (0.61x1.27x14.4mm)
516-290-520	PCB tail
516-290-590	Loose crimp contacts
516-290-591	Crimp contacts on reel (1,800)

Prices on request for:

1. Housings supplied with contacts assembled
2. Housings with cable tails crimped & assembled

FEATURES

- Utilises EDAC gold-plated, hermaphroditic, contacts producing ultra-reliable connection with four gas-tight mating surfaces: A top quality, yet highly cost-effective, interconnect product.
- Board mount or in-line contact tail options.
- Identical insulator for plug and receptacle enabling one part number to be ordered/stocked
- 2 or 3 way options.
- Clip available to neatly secure mated connector to panel when used in-line.

SPECIFICATIONS

- **Materials:**
Housing and locking clip – Glass-filled thermoplastic
Contacts – Phosphor bronze alloy, all-over gold plate to 10u”
- **Electrical**
Contact rating – 8.5 amperes
Contact resistance – 6 milliohms max.
Insulation resistance – 5,000 megohms min.
Voltage proof – 2,500 volts R.M.S. sea level

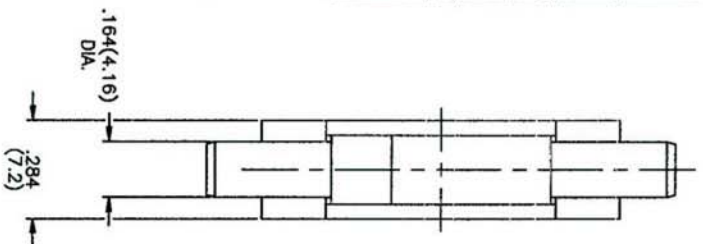
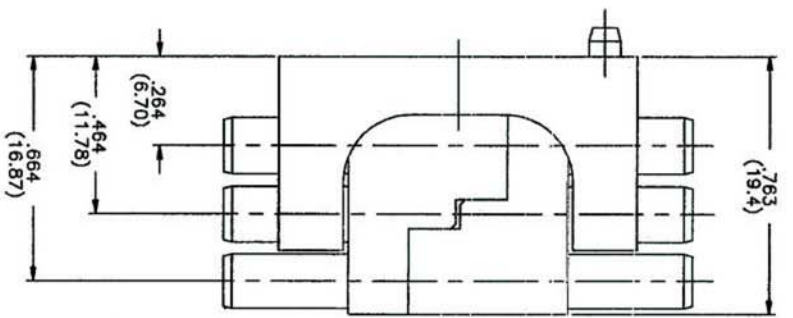
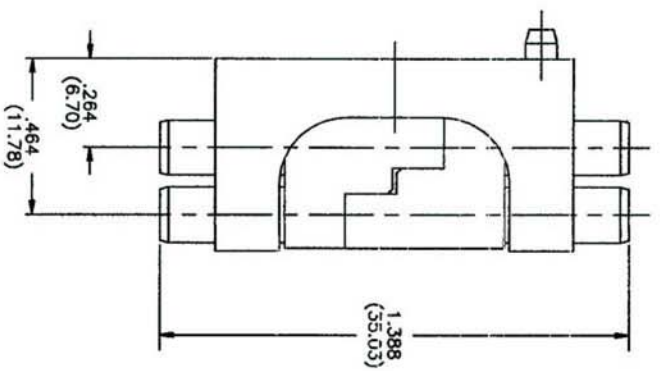
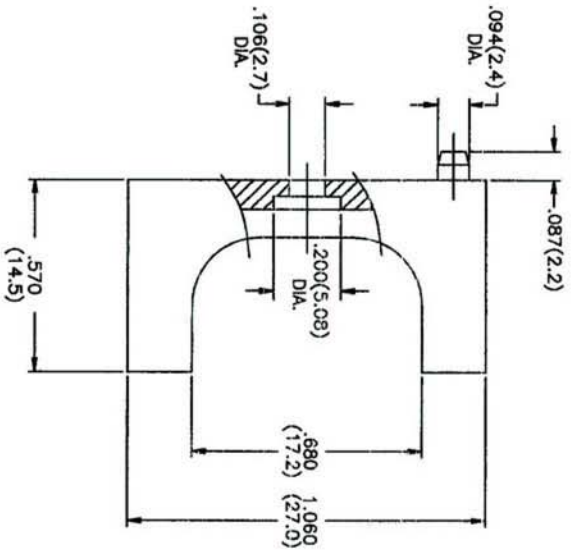
EDAC (Europe) Ltd., Brick Close, Kiln Farm,
Milton Keynes, MK11 3JB, United Kingdom

Tel: +44 (0) 1908 569333 Fax: +44 (0) 1908 569444

sales@edac.co.uk

EDAC (Europe) 

www.edac.net



MATERIALS:
 HOUSING AND LOCKING CLIP: THERMOPLASTIC GLASS FILLED
 CONTACTS: PHOSPHOR BRONZE ALLOY CA-510

ELECTRICAL SPECIFICATIONS
 CONTACT RATING: 8.5 AMPERES
 CONTACT RESISTANCE: 6 MILLIOHMS MAX.
 INSULATION RESISTANCE: 5000 MEGOHMS MIN.
 VOLTAGE PROOF: 2500 VOLTS R.M.S SEA LEVEL

520 SERIES CABLE CONNECTOR		ACAD REFERENCE NO.	520SER	
EDAC INC TORONTO, ONTARIO CANADA		DRAWN: F. BRIONES	DATE: FEB. 21/02	
THESE DRAWINGS AND SPECIFICATIONS ARE THE PROPERTY OF EDAC INC. AND SHALL NOT BE REPRODUCED OR COPIED OR USED AS THE BASIS OF ANY MANUFACTURE WITHOUT WRITTEN PERMISSION.		CHECKED:	DATE:	
YOUR CONNECTION TO QUALITY & SERVICE		SCALE: (IN C.A.D. 1:1)	SHEET 1 OF 1	
		DRAWING NUMBER	ISSUE	
		520-002-000-00	5	

X-ON Electronics

Largest Supplier of Electrical and Electronic Components

Click to view similar products for [Headers & Wire Housings](#) category:

Click to view products by [EDAC](#) manufacturer:

Other Similar products are found below :

[95000-104TRLF](#) [10135584-644402LF](#) [DF62W-EP2022PCA](#) [95000-106TRLF](#) [DF62W-2022SCA](#) [DF62W-EP2022PC](#) [2203348](#) [DF62W-2022SC](#) [1084018](#) [1029039](#) [1084017](#) [802-10-012-10-002000](#) [1112640](#) [1112639](#) [891-007-9SS-BST1T](#) [000-34000](#) [0008550134](#) [0009482033](#) [0009507031](#) [57102-F02-18ULF](#) [57102-S06-03LF](#) [57202-S52-04LF](#) [PCN6-15S-2.5E](#) [0039019024](#) [58102-G61-06LF](#) [582553-1](#) [0009485154](#) [0009508121](#) [0022285053](#) [0050291907](#) [018731A](#) [LY20-4P-DT1-P1E-BR](#) [02.125.8002.8](#) [60101931](#) [60598-1 \(Cut Strip\)](#) [M1625-3R/100](#) [61062-3](#) [61082-181009](#) [CSU011177004](#) [636-1427](#) [638009-1](#) [641938-9](#) [641991-4](#) [644168-1](#) [644827-2](#) [647662-1](#) [65039-019ELF](#) [65692-001LF](#) [65781-018](#) [65781-047](#)