



F&F Filipowski sp. j
 ul. Konstytucyjowa 79/81
 95-200 Pabianice POLAND
 tel/fax 48 42 2270971
 e-mail: fif@fif.com.pl

BIS-403

**ELECTRONIC BI-STABLE PULSE RELAY
 with timing switch**

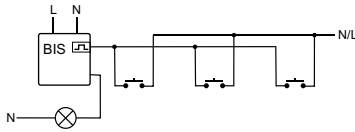


www.fif.com.pl

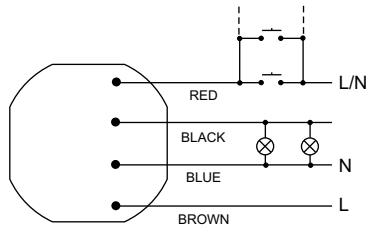
F&F products are covered by an 24 months warranty from date of purchase

PURPOSE

Electronic bi-stable pulse relays BIS-403 enables the user to actuate lighting or other devices from various locations by means of control buttons in parallel connection.

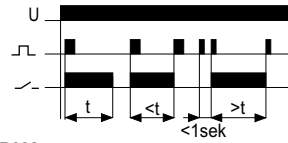


WIRING DIAGRAM



FUNCTIONING

The receiver is actuated by means of a current pulse triggered by pushing any bell push connected to the relay. The receiver is deactivated by another pulse or after a preset time. Pressing the starting button twice within up to one second turns on continuous lighting mode until another pulse has been sent to deactivate the relay.



ASSEMBLY

1. Turn OFF the power.
2. Put on the relay at under plaster box.
3. Connect the relay with wiring diagram.
4. By knob set to switching OFF delay.

ATTENTION!

The BIS-403 is not compatible with bell pushes equipped with fluorescent lamps.

TECHNICAL DATA

supply	230V AC
current load	<10A
controlling current	<1mA
activation delay	0,1÷0,2sec
switching OFF delay (to set)	1÷12min
power consumption	0,8W
connection	4×DY 1mm ² ; l=10cm
working temperature	-25÷50°C
dimensions	Ø55, h=13mm
fixing	to under plaster box Ø60

X-ON Electronics

Largest Supplier of Electrical and Electronic Components

Click to view similar products for [General Purpose Relays](#) category:

Click to view products by [F&F](#) manufacturer:

Other Similar products are found below :

[APF30318](#) [JVN1AF-4.5V-F](#) [PCN-105D3MHZ](#) [5JO-10000S-SIL](#) [5JO-1000CD-SIL](#) [5JO-400CD-SIL](#) [LY2S-AC220/240](#) [LYQ20DC12](#)
[6031007G](#) [6131406HQ](#) [6-1393099-3](#) [6-1393099-8](#) [6-1393122-4](#) [6-1393123-2](#) [6-1393767-1](#) [6-1393843-7](#) [6-1415012-1](#) [6-1419102-2](#) [6-1423698-4](#) [6-1608051-6](#) [6-1608067-0](#) [6-1616170-6](#) [6-1616248-2](#) [6-1616282-3](#) [6-1616348-2](#) [6-1616350-1](#) [6-1616350-8](#) [6-1616358-7](#) [6-1616359-9](#) [6-1616360-9](#) [6-1616931-6](#) [6-1617039-1](#) [6-1617052-1](#) [6-1617090-2](#) [6-1617090-5](#) [6-1617347-5](#) [6-1617353-3](#) [6-1617801-8](#) [6-1617802-2](#) [6-1618107-9](#) [6-1618248-4](#) [M83536/1-027M](#) [CX-4014](#) [MAHC-5494](#) [MAVCD-5419-6](#) [703XCX-120A](#) [7-1393100-5](#) [7-1393111-7](#)
[7-1393144-5](#) [7-1393767-8](#)