



F&F Filipowski sp. j
ul. Konstytucyjna 79/81
95-200 Pabianice POLAND
tel/fax 48 42 2270971
e-mail: fif@fif.com.pl

BIS-411 230V

ELECTRONIC BI-STABLE PULSE RELAY

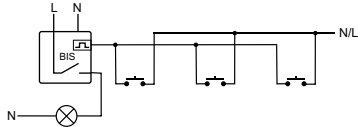


www.fif.com.pl

F&F products are covered by an 24 months warranty from date of purchase

PURPOSE

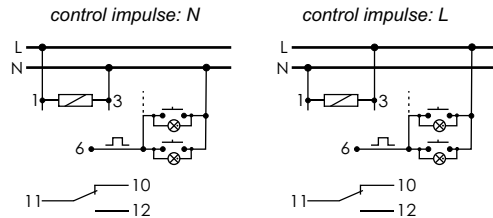
Electronic bi-stable pulse relays BIS-411 230V enables the user to actuate lighting or other devices from various locations by means of control buttons in parallel connection.



TECHNICAL DATA

supply	230V AC
current load	<16A
controlling current	<1mA
activation delay	0,1+0,2sec
sygnalling of supply	green LED
sygnalling of activation	red LED
power consumption	0,8W
connection	screw terminals 2,5mm ²
working temperature	-25÷50°C
dimensions	1 module (18mm)
fixing	on the rail TH-35

WIRING DIAGRAM



FUNCTIONING

The receiver is actuated by means of a current pulse triggered by pushing any bell push connected to the relay. The receiver is deactivated by another pulse or after a preset time. The relay does not "memorize" the position of the relay contact, i.e. in case of supply voltage decay and the subsequent return of supply voltage, the relay contact will be set in the off position. Such a solution prevents the automatic actuation of the receivers controlled that might occur without proper supervision after a long-lasting decay of supply voltage.

ASSEMBLY

1. Turn OFF the power.
2. Put on the relay on the rail in the switchgear box.
3. Connect the power cable to joint 1-3 with accordance chosen control option the relay (control impulse L or N).
4. The timers switching which are connect in parallel connect to joint 6 and to cable which is connect to joint 3.
5. The activated receiver connect in series to joint 11-12.
6. By screwdriver set to switching OFF delay.

ATTENTION!

The BIS-411 230V is compatible with bell pushes equipped with fluorescent lamps.

X-ON Electronics

Largest Supplier of Electrical and Electronic Components

Click to view similar products for [General Purpose Relays](#) category:

Click to view products by [F&F](#) manufacturer:

Other Similar products are found below :

[APF30318](#) [JVN1AF-4.5V-F](#) [PCN-105D3MHZ](#) [5JO-10000S-SIL](#) [5JO-1000CD-SIL](#) [5JO-400CD-SIL](#) [LY2S-AC220/240](#) [LYQ20DC12](#)
[6031007G](#) [6131406HQ](#) [6-1393099-3](#) [6-1393099-8](#) [6-1393122-4](#) [6-1393123-2](#) [6-1393767-1](#) [6-1393843-7](#) [6-1415012-1](#) [6-1419102-2](#) [6-](#)
[1423698-4](#) [6-1608051-6](#) [6-1608067-0](#) [6-1616170-6](#) [6-1616248-2](#) [6-1616282-3](#) [6-1616348-2](#) [6-1616350-1](#) [6-1616350-8](#) [6-1616358-7](#) [6-](#)
[1616359-9](#) [6-1616360-9](#) [6-1616931-6](#) [6-1617039-1](#) [6-1617052-1](#) [6-1617090-2](#) [6-1617090-5](#) [6-1617347-5](#) [6-1617353-3](#) [6-1617801-8](#) [6-](#)
[1617802-2](#) [6-1618107-9](#) [6-1618248-4](#) [M83536/1-027M](#) [CX-4014](#) [MAHC-5494](#) [MAVCD-5419-6](#) [703XCX-120A](#) [7-1393100-5](#) [7-1393111-7](#)
[7-1393144-5](#) [7-1393767-8](#)