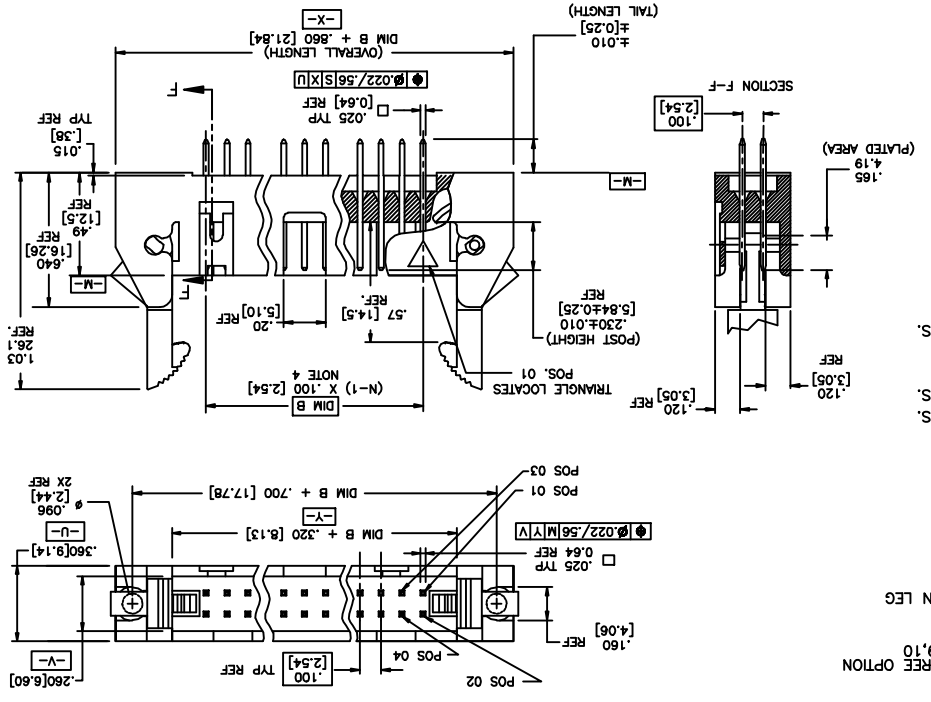
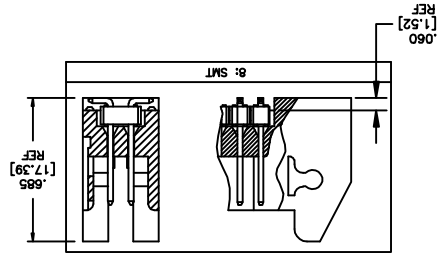
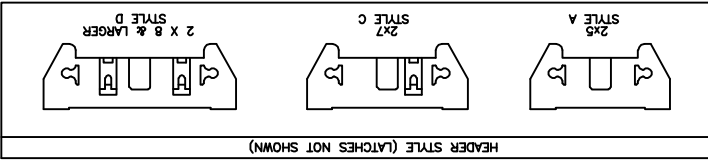


FORM A3 1 2 3 4 5 6

| | | | | | | | | |
|---------------------------|---------------------------|---------------------------|---------------------------|---------------------------|--------------------------------------|---------------------------|---------------------------|---------------------------|
| mat'l code | surface | ISO 802 | ISO 405 | ISO 407 | tolerance unless otherwise specified | projection | product family | QUICKIE |
| ltf | ecm no | df | date | df | date | linear | angles | linear |
| D | V02309 | MEM | 9/11/00 | 9/11/00 | MEM | JXFL/XXJ3 | INCH/MM | scale 1:1 |
| E | C10004 | MPF | 2/26/01 | 2/26/01 | MPF | XXX4.006/XXX4.013 | INCH/MM | scale 1:1 |
| F | M05-0089 | ERE | 5/20/05 | 5/20/05 | ERE | XXX4.006/XXX4.013 | INCH/MM | scale 1:1 |
| G | M07-0116 | AGS | 2/19/07 | 2/19/07 | AGS | D. INGRAM | INCH/MM | scale 1:1 |
| H | M08-0010 | MHT | 1/11/08 | eng | MHT | L. GREEN | INCH/MM | scale 1:1 |
| J | M08-0237 | MHT | 8/26/08 | df | MHT | L. GREEN | INCH/MM | scale 1:1 |
| K | M08-0273 | MHT | 9/26/08 | appd | MHT | L. GREEN | INCH/MM | scale 1:1 |
| sheet | revision | K | K | K | revision | sheet | revision | sheet |
| 1 | 2 | 1 | 2 | 1 | 2 | 1 | 2 | 1 |
| index | sheet | 1 | 2 | 1 | 2 | 1 | 2 | 1 |
| Product Customer Drawing | Product Customer Drawing | Product Customer Drawing | Product Customer Drawing | Product Customer Drawing | Product Customer Drawing | Product Customer Drawing | Product Customer Drawing | Product Customer Drawing |
| 53611 | 53611 | 53611 | 53611 | 53611 | 53611 | 53611 | 53611 | 53611 |
| sheet 1 of 2 size | sheet 1 of 2 size | sheet 1 of 2 size | sheet 1 of 2 size | sheet 1 of 2 size | sheet 1 of 2 size | sheet 1 of 2 size | sheet 1 of 2 size | sheet 1 of 2 size |
| SHORUNDED VERTICAL HEADER | SHORUNDED VERTICAL HEADER | SHORUNDED VERTICAL HEADER | SHORUNDED VERTICAL HEADER | SHORUNDED VERTICAL HEADER | SHORUNDED VERTICAL HEADER | SHORUNDED VERTICAL HEADER | SHORUNDED VERTICAL HEADER | SHORUNDED VERTICAL HEADER |
| .100/2.54cc EJECT LATCH | .100/2.54cc EJECT LATCH | .100/2.54cc EJECT LATCH | .100/2.54cc EJECT LATCH | .100/2.54cc EJECT LATCH | .100/2.54cc EJECT LATCH | .100/2.54cc EJECT LATCH | .100/2.54cc EJECT LATCH | .100/2.54cc EJECT LATCH |
| type | type | type | type | type | type | type | type | type |
| Product Customer Drawing | Product Customer Drawing | Product Customer Drawing | Product Customer Drawing | Product Customer Drawing | Product Customer Drawing | Product Customer Drawing | Product Customer Drawing | Product Customer Drawing |
| A3 | A3 | A3 | A3 | A3 | A3 | A3 | A3 | A3 |



| |
|------------------|
| 8 = SMT |
| 7 = .675 / 17-15 |
| 6 = .150 / 3.81 |
| 4 = .120 / 3.05 |
| 2 = .112 / 2.84 |
| 1 = .086 / 2.16 |
| OBS. |
| OBS. |
| OBS. |

| DASH NO. | POSITIONS | HEADER STYLE |
|----------|-----------|--------------|
| 10 | 2 X 5 | A |
| 14 | 2 X 7 | C |
| 16 | 2 X 8 | D |
| 20 | 2 X 10 | D |
| 26 | 2 X 13 | D |
| 34 | 2 X 17 | D |
| 40 | 2 X 20 | D |
| 50 | 2 X 25 | D |

6 5 4 3 2 1

NOTES:

① HOUSING MAT'L: HIGH TEMPERATURE THERMOPLASTIC. UL94V-0.
COLOR : BLACK

② PIN MATERIAL: PHOSPHOR-BRONZE

③ 3 LBS/1.36 KG MIN. RETENTION.

④ TO DETERMINE DIMENSIONS:
N = NUMBER OF POSITIONS.

EXAMPLE: 10 POS., (N-1) × .100[2.54]=.900[22.87]

⑤ RETENTIVE LEG:
RETENTIVE LEG APPLICABLE TO TAIL LENGTH .120/3.05 ONLY.

RETENTION IS APPLIED TO FOUR PINS ON PART SIZES OF 2x14 AND SMALLER.

AND APPLIED TO EIGHT PINS ON PARTS SIZES OF 2x15 AND LARGER.

5LB/2.3KG MAX INSERTION FORCE AND .25LB/.1KG MIN RETENTION FORCE

PER RETENTIVE PIN USING .062/1.57 THICK CIRCUIT BOARD AND RECOMMENDED

HOLE PATTERN, RETENTIVE LOCATION AT THE DISCRETION OF THE MANUFACTURER.

OMIT FROM PRODUCT NUMBER IF THIS FEATURE IS NOT APPLICABLE.

6. PACKAGED IN TRAYS.

7. UNDERPLATING: 50µ"/1.27µm NI.

⑥ FOR POLARIZATION, SPECIFY POSITION NUMBER (1... 03= PIN 3) TO OMIT PIN.

OMIT FROM PRODUCT NUMBER IF THIS FEATURE IS NOT APPLICABLE.

⑦ ADD "L" SUFFIX AT THE END OF PART NUMBER FOR LEAD FREE OPTION.

⑧ THIS PRODUCT MEETS EUROPEAN UNION DIRECTIVES AND OTHER

COUNTRY REGULATION AS DESCRIBED IN GS-22-008.

11. THE HOUSING WILL WITHSTAND EXPOSURE TO 260°C PEAK TEMPERATURE

MINIMUM THICK CIRCUIT BOARD. SEE APPLICATION NOTES/PROCEDURES

IF THEY ARE AVAILABLE.

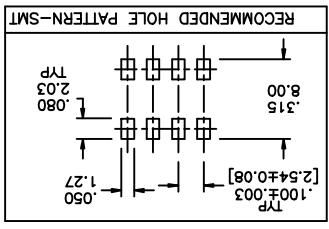
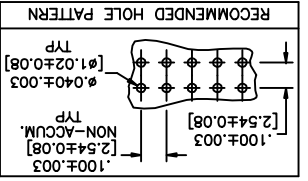
THE HOUSING WILL WITHSTAND EXPOSURE TO 260°C PEAK TEMPERATURE

FOR 20 SECONDS IN A CONVECTION, INFRA-RED OR VAPOR PHASE REFLOW

OVEN. SEE APPLICATION NOTES/PROCEDURES IF THEY ARE AVAILABLE.

MAY BE EITHER GOLD OR GXT PLATED AT MANUFACTURER'S OPTION.

| | | | | | | | | |
|------------|----------|-----------|-----------|--------------------------------------|-------------------|------------|--------------------------|-------------------|
| mat'l code | surface | ISO 802 | tolerance | ISO 400 | ISO 1001 | projection | product family | QUICKIE |
| ltf | ecm no | dr | date | refernces unless otherwise specified | | | title | |
| K | angles | linear | linear | XXXX.005/XXXX.13 | XXXX.005/XXXX.13 | INCH/MM | | |
| | 0±.2 | | | XXXX.000/XXXX.005 | XXXX.000/XXXX.005 | scale 1:1 | | |
| | dr | D. INGRAM | 7/21/99 | | | dwg no | 53611 | sheet 2 of 2 size |
| | engr | L. GREEN | 7/21/99 | | | type | Product Customer Drawing | |
| | dr | L. GREEN | 7/21/99 | | | revision | | |
| | appd | L. GREEN | 7/21/99 | | | sheet | | |
| index | revision | | | | | | | |



X-ON Electronics

Largest Supplier of Electrical and Electronic Components

Click to view similar products for [Headers & Wire Housings](#) category:

Click to view products by [FCT Electronics](#) manufacturer:

Other Similar products are found below :

[95000-104TRLF](#) [10135584-644402LF](#) [DF62W-EP2022PCA](#) [95000-106TRLF](#) [DF62W-2022SCA](#) [DF62W-EP2022PC](#) [2203348](#) [DF62W-2022SC](#) [1084018](#) [1029039](#) [1084017](#) [802-10-012-10-002000](#) [1112640](#) [1112639](#) [891-007-9SS-BST1T](#) [000-34000](#) [0008550134](#) [0009482033](#) [0009507031](#) [57102-F02-18ULF](#) [57102-S06-03LF](#) [57202-S52-04LF](#) [PCN6-15S-2.5E](#) [0039019024](#) [58102-G61-06LF](#) [582553-1](#) [0009485154](#) [0009508121](#) [0022285053](#) [0050291907](#) [018731A](#) [LY20-4P-DT1-P1E-BR](#) [02.125.8002.8](#) [60101931](#) [60598-1 \(Cut Strip\)](#) [M1625-3R/100](#) [61062-3](#) [61082-181009](#) [CSU011177004](#) [636-1427](#) [638009-1](#) [641938-9](#) [641991-4](#) [644168-1](#) [644827-2](#) [647662-1](#) [65039-019ELF](#) [65692-001LF](#) [65781-018](#) [65781-047](#)