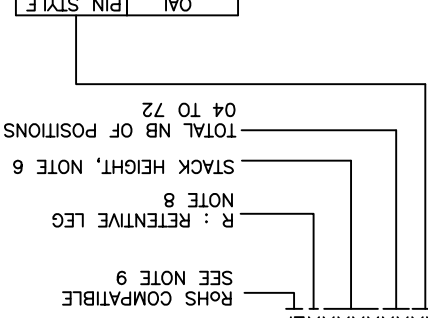


- a - PLATING: "LF" MEANS THE PRODUCT IS LEAD-FREE, 2µm MINIMUM MATTE TIN OVER 1.27µm MINIMUM NICKEL UNDERPLATE.
- b - MANUFACTURING PROCESS COMPATIBILITY THE HOUSING WILL WITHSTAND EXPOSURE TO 260°C ±5°C SOLDER BATH TEMPERATURE FOR 5 SECONDS IN A WAVE SOLDER APPLICATION WITH A 1.6mm MIN THICK CIRCUIT BOARD.
- c - LABELLING: MEETS PACKAGING SPECS AS PER GS-14-920 AND OTHER COUNTRY REGULATIONS AS DESCRIBED IN GS-47-0004.
- d - THIS PRODUCT MEETS EUROPEAN UNION DIRECTIVES

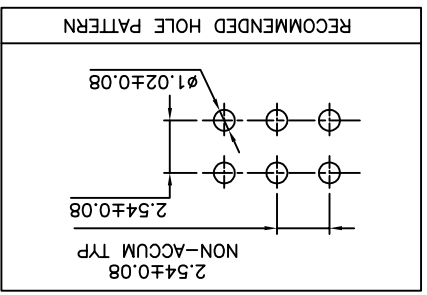
- 9. ROHS COMPATIBLE PRODUCT SPECIFICATIONS
- 8. RETENTION IS APPLIED TO TWO ADJACENT PINS AT EACH END OF THE PRODUCT. SEE SCHEMA 1 OMIT FROM PRODUCT NUMBER IF THIS FEATURE IS NOT APPLICABLE.
- 7. MATING LENGTH = (OAL)-(3.05)-(STACK HEIGHT) EXAMPLE FOR STACK HEIGHT: 1 2 5 0 = 12.5mm OAL 65.0MM MAX AVAILABLE. 5.0mm MIN TO 60.00mm MAX AVAILABLE SPECIFY MILLIMETERS
- 6. XXXX = MILLIMETERS EXAMPLE: 8 POS PER ROW, N x 2.54 = 20.32mm
- 5. TO DETERMINE DIMENSIONS: N = NUMBER OF POSITIONS PER ROW
- 4. 9N MIN RETENTION IN EITHER DIRECTION
- 3. STANDARD PACKAGING IN POLYBAG
- 2. PIN MATERIAL: PHOSPHOR BRONZE
- 1. HOUSING MAT'L: HIGH TEMPERATURE THERMOPLASTIC, UL94V-0 COLOR: BLACK

NOTES:

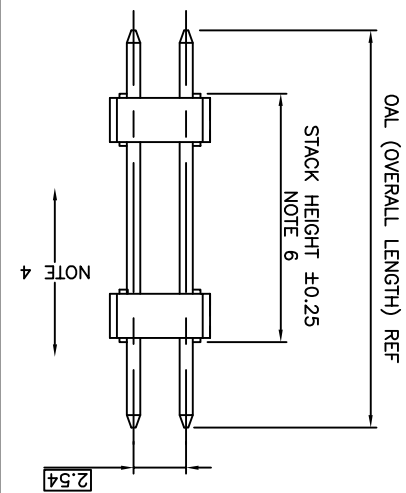
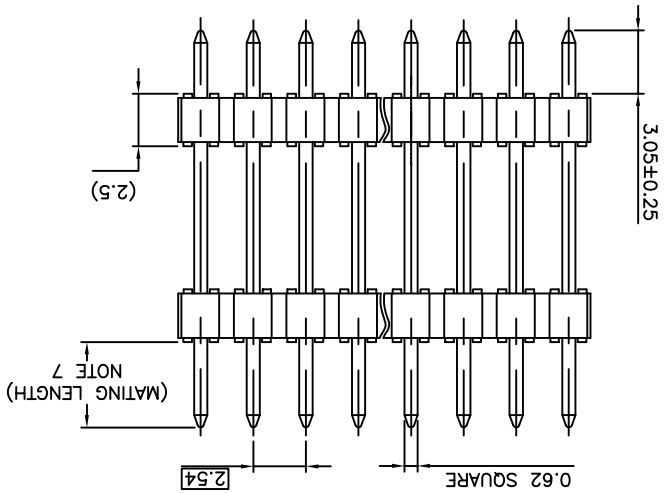
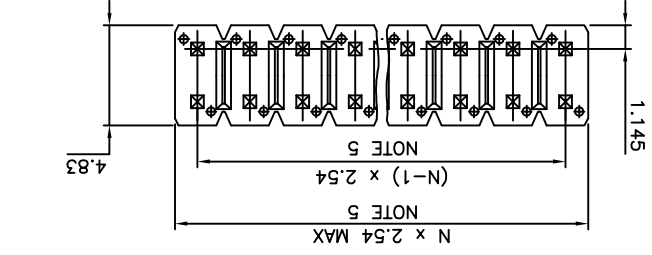
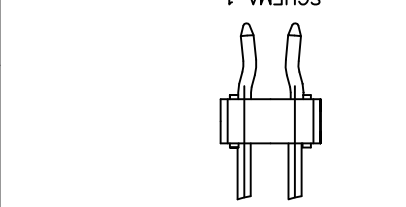
- 1 = 0.76µm GOLD/GXT ON CONTACT AREA OVER 1.27µm Ni MIN
- 4 = 2µm MIN MATTE TIN OVER 1.27µm Ni MIN
- 5 = 0.25µm GOLD/GXT ON CONTACT AREA 2µm MIN MATTE TIN ON TAIL
- 8 = 0.38µm GOLD/GXT ON CONTACT AREA 2µm MIN MATTE TIN ON TAIL



OAL	PIN STYLE
11.17	29
12.2	01
13.5	02
15.9	03
16.56	15
16.76	04
17.65	05
18.91	06
20.50	28
20.96	07
22.40	19
23.5	08
26.04	09
26.42	14
28.00	18
28.58	10
30.48	20
31.12	11
32.15	21
33.66	12
34.00	13
36.20	16
37.30	22
38.40	23
40.00	30
42.30	24
43.00	25
47.00	26
52.00	27



LEADED PRODUCT NUMBER 54122-XXX-XX-XXXX AS AVAILABLE



mat'l. code		SEE NOTES		ISO 1302		surface		tolerance unless otherwise specified		projection		product family		BERGSTIK	
lfr	ecm no	dr	date	tolerances unless otherwise specified	linear	angles	mm	mm	mm	mm	mm	mm	mm	mm	mm
R	F-22228	AMA	15.10.20	xx ±0.3	xx ±0.13	linear	mm	mm	mm	mm	mm	mm	mm	mm	mm
K	F1-0034	LMU	11.03.03	xxxx ±0.05	xxxx ±0.13	linear	mm	mm	mm	mm	mm	mm	mm	mm	mm
L	B-15673	LMU	13.02.14	DLE	01.01.24	01.01.24	01.01.24	01.01.24	01.01.24	01.01.24	01.01.24	01.01.24	01.01.24	01.01.24	01.01.24
M	B-18962	LMU	14.09.29	engr	JM.C	01.01.24	01.01.24	01.01.24	01.01.24	01.01.24	01.01.24	01.01.24	01.01.24	01.01.24	01.01.24
N	B-19782	AMA	14.12.16	chp	JM.C	01.01.24	01.01.24	01.01.24	01.01.24	01.01.24	01.01.24	01.01.24	01.01.24	01.01.24	01.01.24
P	B-20598	AMA	15.03.30	dppd	JF.N	01.01.24	01.01.24	01.01.24	01.01.24	01.01.24	01.01.24	01.01.24	01.01.24	01.01.24	01.01.24
sheet	revision	index	sheet												

UNSHR.HEADER STR DR TMT
54122
CUSTOMER Drawing
sheet 1 of 1 size A3

X-ON Electronics

Largest Supplier of Electrical and Electronic Components

Click to view similar products for [Headers & Wire Housings](#) category:

Click to view products by [FCT Electronics](#) manufacturer:

Other Similar products are found below :

[95000-104TRLF](#) [10135584-644402LF](#) [DF62W-EP2022PCA](#) [95000-106TRLF](#) [DF62W-2022SCA](#) [DF62W-EP2022PC](#) [2203348](#) [DF62W-2022SC](#) [1084018](#) [1029039](#) [1084017](#) [802-10-012-10-002000](#) [1112640](#) [1112639](#) [891-007-9SS-BST1T](#) [000-34000](#) [0008550134](#) [0009482033](#) [0009507031](#) [57102-F02-18ULF](#) [57102-S06-03LF](#) [57202-S52-04LF](#) [PCN6-15S-2.5E](#) [0039019024](#) [58102-G61-06LF](#) [582553-1](#) [0009485154](#) [0009508121](#) [009176003701906](#) [0022285053](#) [0050291907](#) [018731A](#) [LY20-4P-DT1-P1E-BR](#) [02.125.8002.8](#) [60101931](#) [60598-1 \(Cut Strip\)](#) [M1625-3R/100](#) [61062-3](#) [61082-181009](#) [CSU011177004](#) [636-1427](#) [638009-1](#) [641938-9](#) [641991-4](#) [644168-1](#) [644827-2](#) [647662-1](#) [65039-019ELF](#) [65692-001LF](#) [65781-018](#)