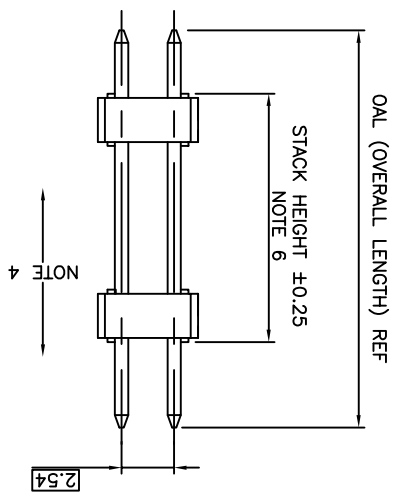
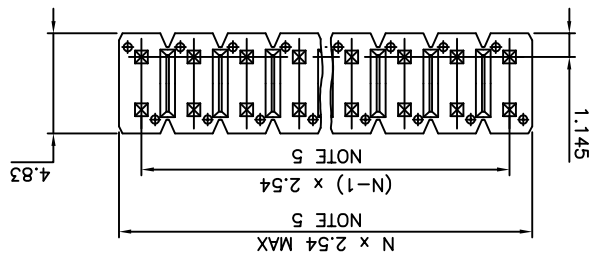
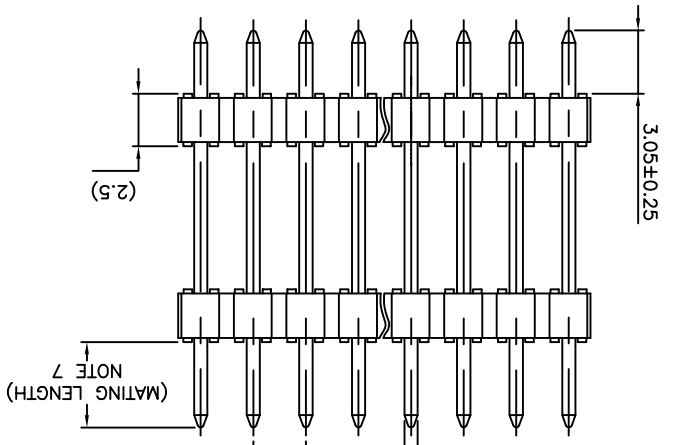
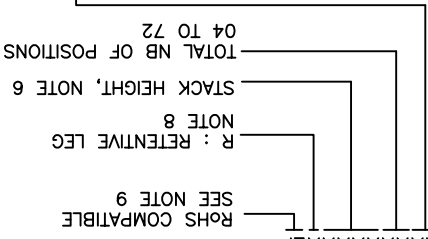


- a - PLATING:
- "LF" MEANS THE PRODUCT IS LEAD-FREE, 2µm MINIMUM MATTE TIN OVER 1.27µm MINIMUM NICKEL UNDERPLATE.
- b - MANUFACTURING PROCESS COMPATIBILITY
- THE HOUSING WILL WITHSTAND EXPOSURE TO 260°C ±5°C SOLDER BATH TEMPERATURE FOR 5 SECONDS IN A WAVE SOLDER APPLICATION WITH A 1.6mm MIN THICK CIRCUIT BOARD.
- c - LABELLING:
- MEETS PACKAGING SPECS AS PER GS-14-920
- THIS PRODUCT MEETS EUROPEAN UNION DIRECTIVES AND OTHER COUNTRY REGULATIONS AS DESCRIBED IN GS-47-0004.

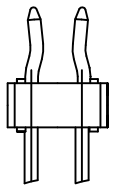
- 9. ROHS COMPATIBLE PRODUCT SPECIFICATIONS
- 8. RETENTION IS APPLIED TO TWO ADJACENT PINS AT EACH END OF THE PRODUCT. SEE SCHEMA 1 OMIT FROM PRODUCT NUMBER IF THIS FEATURE IS NOT APPLICABLE
- 7. MATING LENGTH = (OAL)-(3.05)-(STACK HEIGHT) EXAMPLE FOR STACK HEIGHT: 1 2 5 0 = 12.5mm OAL 65.0MM MAX AVAILABLE. 5.0mm MIN TO 60.00mm MAX AVAILABLE SPECIFY MILLIMETERS
- 6. XXXX = MILLIMETERS 28.58 28.00 29.70 31.12 32.15 33.66 34.00 36.20 37.50 38.40 40.00 42.30 43.00 47.00 52.00
- 5. TO DETERMINE DIMENSIONS: N = NUMBER OF POSITIONS PER ROW EXAMPLE: 8 POS PER ROW, N x 2.54 = 20.32mm
- 4. 9N MIN RETENTION IN EITHER DIRECTION
- 3. STANDARD PACKAGING IN POLYBAG
- 2. PIN MATERIAL: PHOSPHOR BRONZE
- 1. HOUSING MAT'L: HIGH TEMPERATURE THERMOPLASTIC, UL94V-0 COLOR: BLACK

ROHS COMPATIBLE PRODUCT NUMBER	OAL	PIN STYLE
54122-XXXXXXXL	11.17	29
	12.2	01
	13.5	02
	15.9	03
	16.56	15
	16.76	04
	17.65	05
	18.91	06
	20.50	28
	20.96	07
	22.40	19
	23.5	08
	26.04	09
	26.42	14
	28.00	18
	28.58	10
	29.70	31
	30.48	20
	31.12	11
	32.15	21
	33.66	12
	34.00	13
	36.20	16
	37.50	22
	38.40	23
	40.00	30
	42.30	24
	43.00	25
	47.00	26
	52.00	27

- 1 = 0.76µm GOLD/GXT ON CONTACT AREA OVER 1.27µm NI MIN
- 4 = 2µm MIN MATTE TIN OVER 1.27µm NI MIN
- 5 = 0.25µm GOLD/GXT ON CONTACT AREA 2µm MIN MATTE TIN ON TAIL
- 8 = 0.38µm GOLD/GXT ON CONTACT AREA 2µm MIN MATTE TIN ON TAIL



SCHEMA 1
TWO RETENTION PIN AT EACH END OF THE PRODUCT



LEADED PRODUCT NUMBER 54122-XXX-XX-XXXX AS AVAILABLE

mat'l. code	surface	ISO 1302	tolerance unless otherwise specified	projection	product family	title	scale	4:1
L	B-15673	LMU	13.02,14	dr	D.LE	01.01,24	01.01,24	01.01,24
M	B-18962	LMU	14.09,29	engr	JM.C	01.01,24	01.01,24	01.01,24
N	B-19782	AMA	14.12,16	chp	JM.C	01.01,24	01.01,24	01.01,24
P	B-20598	AMA	15.03,30	dppd	JF.N	01.01,24	01.01,24	01.01,24
S	F-26104	LMU	17.02,16	linear	xxxx	±0.13	±0.05	±0.05
R	F-22228	AMA	15.10,20	angles	xx	±0.3	mm	mm

SEE NOTES

ISO 406 ISO 1101

UNSHR.HEADER

STR DR TMT

54122

CUSTOMER

Drawing

sheet revision

index sheet



X-ON Electronics

Largest Supplier of Electrical and Electronic Components

Click to view similar products for [Headers & Wire Housings](#) category:

Click to view products by [FCT Electronics](#) manufacturer:

Other Similar products are found below :

[95000-104TRLF](#) [10135584-644402LF](#) [DF62W-EP2022PCA](#) [95000-106TRLF](#) [DF62W-2022SCA](#) [DF62W-EP2022PC](#) [2203348](#) [DF62W-2022SC](#) [1084018](#) [1029039](#) [1084017](#) [802-10-012-10-002000](#) [1112640](#) [1112639](#) [891-007-9SS-BST1T](#) [000-34000](#) [0008550134](#) [0009482033](#) [0009507031](#) [57102-F02-18ULF](#) [57102-S06-03LF](#) [57202-S52-04LF](#) [PCN6-15S-2.5E](#) [0039019024](#) [58102-G61-06LF](#) [582553-1](#) [0009485154](#) [0009508121](#) [0022285053](#) [0050291907](#) [018731A](#) [LY20-4P-DT1-P1E-BR](#) [02.125.8002.8](#) [60101931](#) [60598-1 \(Cut Strip\)](#) [M1625-3R/100](#) [61062-3](#) [61082-181009](#) [CSU011177004](#) [636-1427](#) [638009-1](#) [641938-9](#) [641991-4](#) [644168-1](#) [644827-2](#) [647662-1](#) [65039-019ELF](#) [65692-001LF](#) [65781-018](#) [65781-047](#)