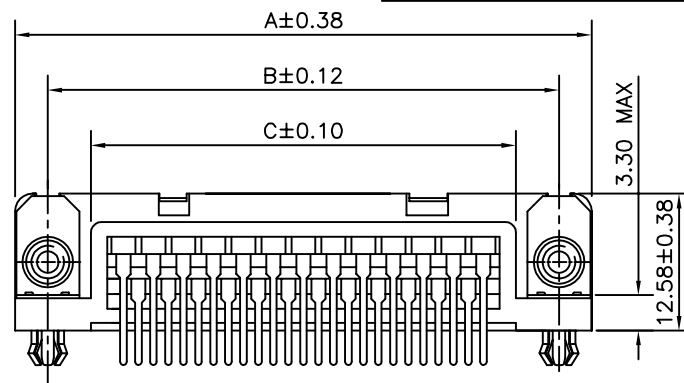
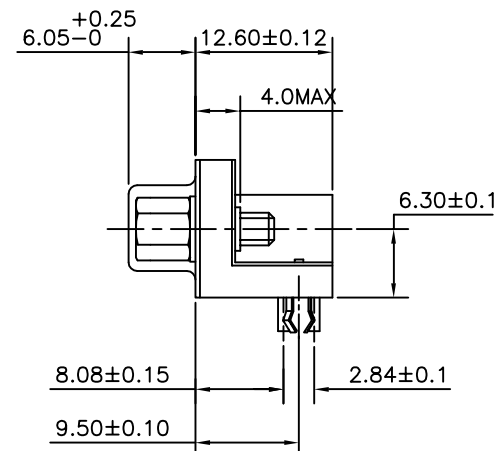
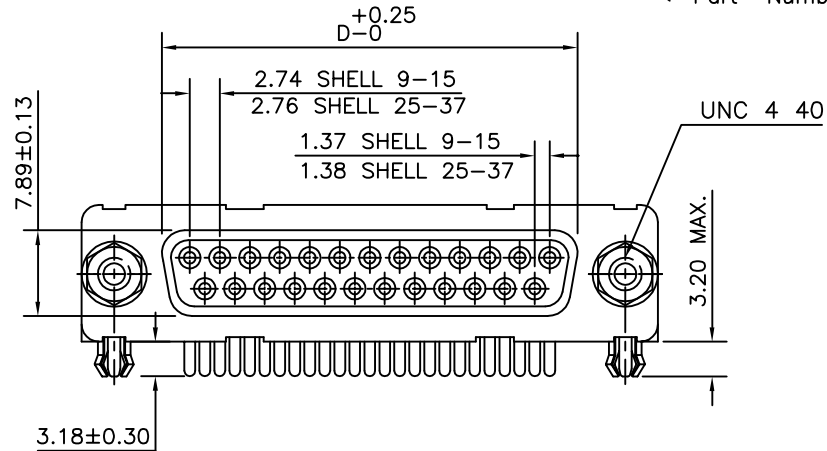
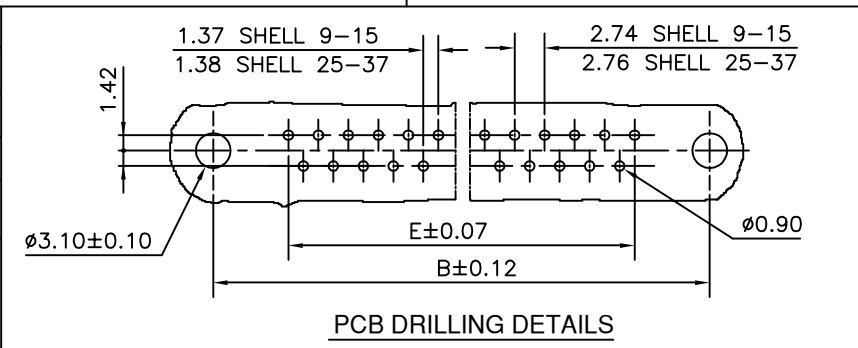


	37	69.32	63.50	55.68	54.71	49.68
	25	53.03	47.04	39.12	38.25	33.12
	15	39.14	33.32	25.18	24.54	19.18
	09	30.81	24.99	16.96	16.21	10.96
SHELL	A	B	C	D	E	



TECHNICAL SPECIFICATIONS

MATERIAL	
SHELL	: STEEL TIN/Zinc Cr 3 PLATED.
INSULATORS	: SELF EXTINGUISHING BLACK POLYESTER UL CLASS 94V0 THE HOUSING WILL WITHSTAND EXPOSURE TO 260-265°C IF WE USE PROTECTIVE ADHESIVE (type Kapton or Teflon) OR PROTECTIVE METALLIC DEVICE
CONTACTS	: COPPER ALLOY
PLATING	
ACTIVE ZONE	: GOLD OVER NICKEL
TERMINATION ZONE	: TIN LEAD OVER NICKEL
FOR LEAD FREE PLATING	: 2µ MIN.MATTE TIN TOP OVER 1.27µ MIN.NICKEL UNDER PLATE(ON TERMINATION ZONE)
METAL BRACKET	: BRASS,TIN/Zinc Cr 3 PLATED.
HARPOON	: BRASS,TIN PLATED.
CLINCH NUT	: BRASS,TIN/Zinc Cr 3 PLATED.
SCREW LOCK	: BRASS,TIN/Zinc Cr 3 PLATED.
WASHER	: BRASS,TIN/Zinc Cr 3 PLATED.

ELECTRICAL DATA

MAX.CURRENT RATING	: 5A
TEST VOLTAGE	: 1000V
RATED VOLTAGE	: 300V
CONTACT RESISTANCE	: ≤ 25mΩ
SHELL RESISTANCE	: ≤ 5mΩ
INSULATION RESISTANCE	: ≥ 5000MΩ

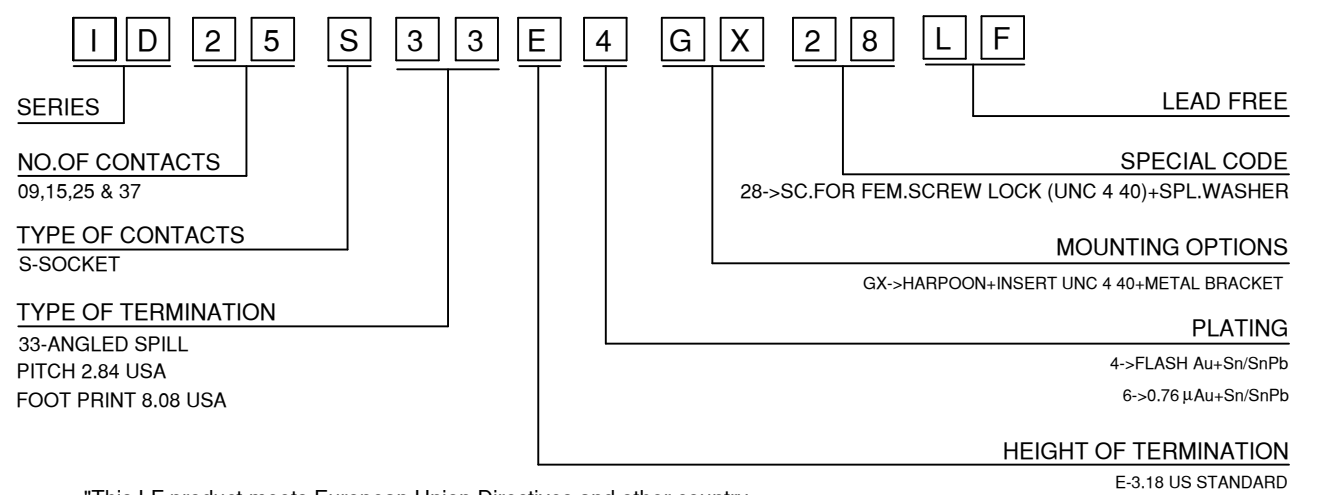
ENVIRONMENTAL CHARACTERISTICS.

OPERATING TEMPERATURE RANGE	: -55°C +125°C
-----------------------------	----------------

MECHANICAL CHARACTERISTICS

MATING/UNMATING CYCLES (MIN)	: 200 (FLASH Au); 500 (0.76µ Au)
INSERTION/EXTRACTION FORCE PER CONTACT	: 5 N Max./ 0.3 N Min.

ORDERING INFORMATION



"This LF product meets European Union Directives and other country regulations as described in GS-22-008"

The housing will withstand exposure to 260°C peak temperature for 3.5 seconds in a wave solder application with a 1.6mm minimum thick circuit board.

Packaging as per GS-14-920

mat'l. code		surface		tolerance		projection		product family	
SEE NOTE 4		ISO 1302 ✓		ISO 406 ISO 1101				DELTA-D	
ltr	ecn no	dr	date	tolerances unless otherwise specified		MM		title	
E	106-0074	GVJ	2006/06/08	angles	linear			DELTA-D A/S FEMALE CONNECTOR (GX VER.)+ SCREW FOR FEM.SCREW LOCK+WASHER	
				0°±1°		scale -		dwg no	
				dr	GEORGE.V.JOSEPH	16/12/1998		sheet 1 of 1	
				engr	GEORGE.V.JOSEPH	16/12/1998		size	
				chr	GEORGE.V.JOSEPH	22/06/2006		A3	
				appd	K_V_SIVADAS	22/06/2006		type	
sheet index		revision sheet		E				Product Customer Drawing	
1		1							

Copyright FCI
FCIconnect.com

X-ON Electronics

Largest Supplier of Electrical and Electronic Components

Click to view similar products for [D-Sub Standard Connectors](#) category:

Click to view products by [Amphenol](#) manufacturer:

Other Similar products are found below :

[DCM37S732N](#) [DAM15P500](#) [DEV09S364GTLF](#) [DEM09P032N](#) [DDM50P732N](#) [DAM15S332N](#) [173109-2218](#) [173109-2466](#) [173109-2436](#)
[173109-2435](#) [56F706-005-LI](#) [56F711-015](#) [015-0341-000](#) [015-0372-008](#) [015-8544-011](#) [017041-0005](#) [020419-0104](#) [012-0515-000](#) [012-9507-](#)
[034](#) [012-9507-114](#) [012-9534-001](#) [020745-0008](#) [609-25P](#) [M24308/2-23Z](#) [M243082310F](#) [M243082410F](#) [M243082411F](#) [M24308/4-21](#)
[CT1A18-11PSA206](#) [CT1N36-5SC](#) [CT2-16S-17PS](#) [CT2-20-15PCAU](#) [CT2-24-12PS](#) [CT2-24-28PSF127A206](#) [CT2-32-9PC](#) [CT6F9767-14-4-](#)
[14S-5PC](#) [CT6FA10SL-4PS](#) [CT7-18-10SC](#) [CT7-18-10SCAU](#) [CT7-18-12SCAU](#) [CT7-18-1PC](#) [CT7-18-1PCAU](#) [CT7-18-21SCAU](#) [M83513/01-](#)
[FC](#) [M83723/76W24619 L/C](#) [M85049/48-3-2F](#) [69001-865](#) [6STD09PCM99B70X](#) [6STD09SCM99B30X](#) [6STD09SCT99S40X](#)