



**OPTICALLY COUPLED BILATERAL SWITCH NON-ZERO CROSSING TRIAC**



**APPROVALS**

- UL recognised, File No. E91231 under Package System 'KK'

**'X' SPECIFICATION APPROVALS**

- VDE 0884 in 3 available lead forms : -  
- STD  
- G form  
- SMD approved to CECC 00802

**DESCRIPTION**

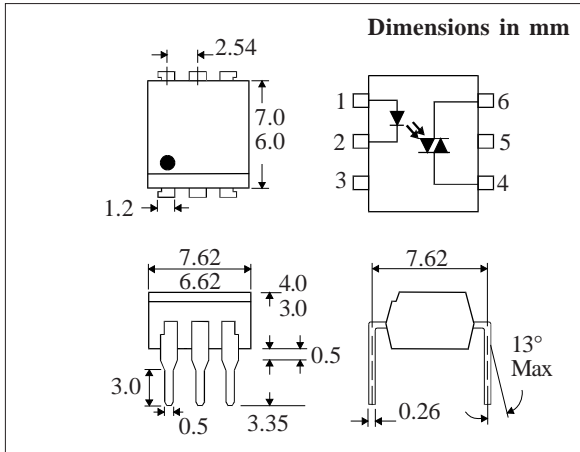
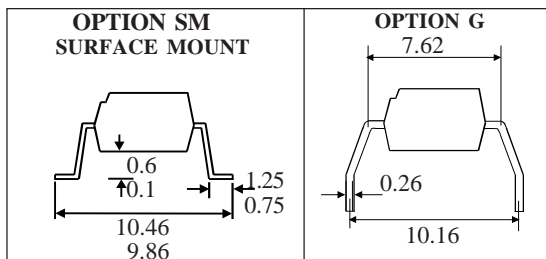
The MOC302\_ series are optically coupled isolators consisting of a Gallium Arsenide infrared emitting diode coupled with a light activated silicon bilateral switch performing the functions of a triac mounted in a standard 6 pin dual-in-line package.

**FEATURE**

- Options :-  
10mm lead spread - add G after part no.  
Surface mount - add SM after part no.  
Tape&reel - add SMT&R after part no.
- High Isolation Voltage (5.3kV<sub>RMS</sub>, 7.5kV<sub>PK</sub>)
- 400V Peak Blocking Voltage
- All electrical parameters 100% tested
- Custom electrical selections available

**APPLICATIONS**

- CRTs
- Power Triac Driver
- Motors
- Consumer appliances
- Printers



**ABSOLUTE MAXIMUM RATINGS (25 °C unless otherwise noted)**

Storage Temperature	-55°C - +150°C
Operating Temperature	-40°C - +100°C
Lead Soldering Temperature	260°C
(1.6mm from case for 10 seconds)	

**INPUT DIODE**

Forward Current	50mA
Reverse Voltage	6V
Power Dissipation	70mW
(derate linearly 0.93mW/°C above 25°C)	

**OUTPUT PHOTO TRIAC**

Off-State Output Terminal Voltage	400V
Forward Current (Peak)	1A
Power Dissipation	300mW
(derate linearly 4.0mW/°C above 25°C)	

**POWER DISSIPATION**

Total Power Dissipation	330mW
(derate linearly 4.4mW/°C above 25°C)	

**ISOCOM COMPONENTS 2004 LTD**  
Unit 25B, Park View Road West,  
Park View Industrial Estate, Brenda Road  
Hartlepool, Cleveland, TS25 1UD  
Tel: (01429) 863609 Fax: (01429) 863581

**ELECTRICAL CHARACTERISTICS (  $T_A = 25^\circ\text{C}$  Unless otherwise noted )**

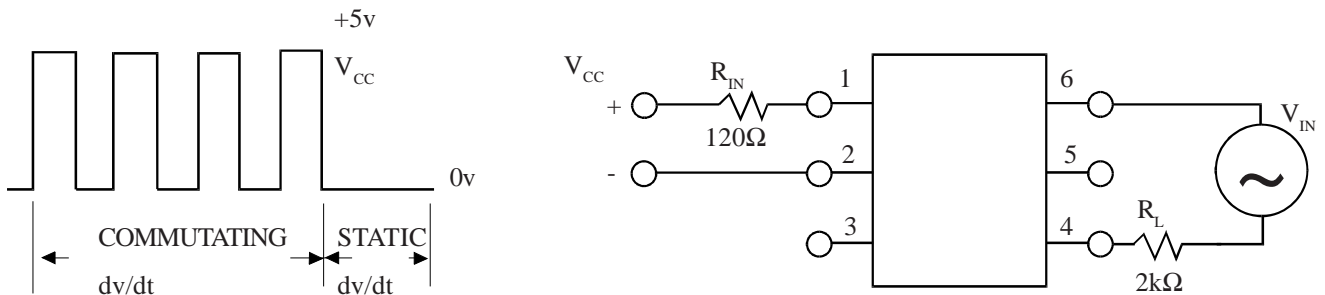
PARAMETER		MIN	TYP	MAX	UNITS	TEST CONDITION
Input	Forward Voltage ( $V_F$ ) Reverse Current ( $I_R$ )		1.2	1.5	V $\mu\text{A}$	$I_F = 10\text{mA}$ $V_R = 6\text{V}$
Output	Peak Off-state Current ( $I_{\text{DRM}}$ ) Peak Blocking Voltage ( $V_{\text{DRM}}$ ) On-state Voltage ( $V_{\text{TM}}$ ) Critical rate of rise of off-state Voltage ( $dv/dt$ ) (note 1) Critical rate of rise of commutating Voltage ( $dv/dt$ ) (note 1)	400	1.5	100	nA V V $\text{V}/\mu\text{s}$ $\text{V}/\mu\text{s}$	$V_{\text{DRM}} = 400\text{V}$ (note 1) $I_{\text{DRM}} = 100\text{nA}$ $I_{\text{TM}} = 100\text{mA}$ (peak)  $I_{\text{load}} = 15\text{mA}$ , $V_{\text{IN}} = 30\text{V}$ (fig 1.)
Coupled	Input Current to Trigger ( $I_{\text{FT}}$ ) (note 2)  IS6015 IS6010 IS6005 MOC3023  Holding Current, either direction ( $I_H$ )  Input to Output Isolation Voltage $V_{\text{ISO}}$			15 10 5	mA mA mA  $\mu\text{A}$  $V_{\text{RMS}}$ $V_{\text{PK}}$	$V_D = 3\text{V}$ (note 2)      See note 3 See note 3

Note 1. Test voltage must be applied within  $dv/dt$  rating.

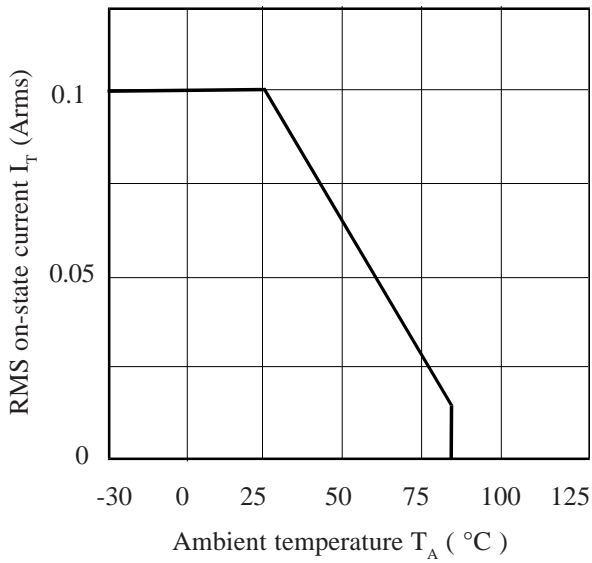
Note 2. Guaranteed to trigger at an  $I_F$  value less than or equal to max.  $I_{\text{FT}}$ , recommended  $I_F$  lies between Rated  $I_{\text{FT}}$  and absolute max.  $I_{\text{FT}}$ .

Note 3. Measured with input leads shorted together and output leads shorted together.

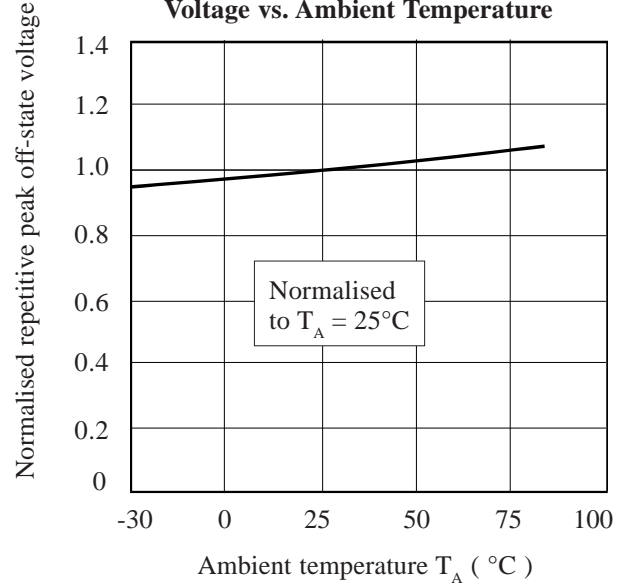
**FIGURE 1**



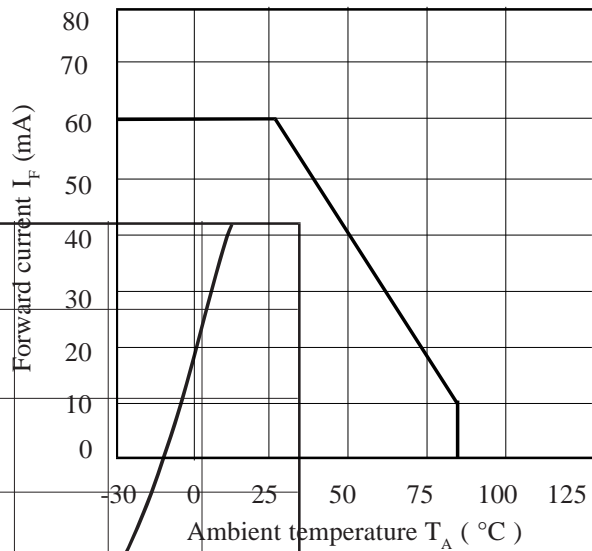
**RMS On-state Current vs. Ambient Temperature**



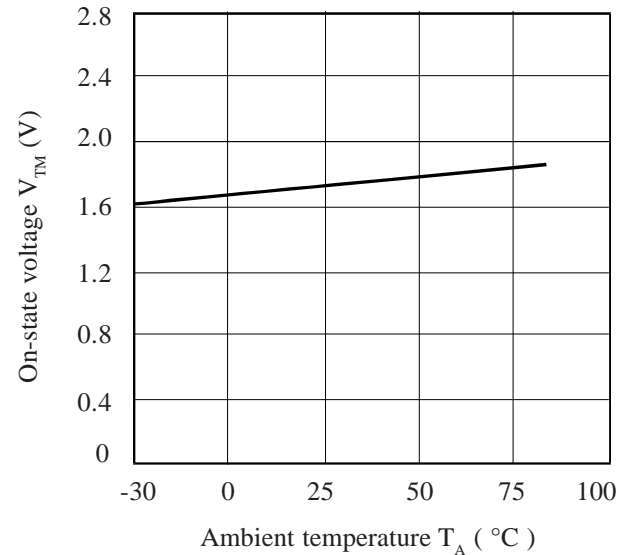
**Normalised Repetitive Peak Off-state Voltage vs. Ambient Temperature**



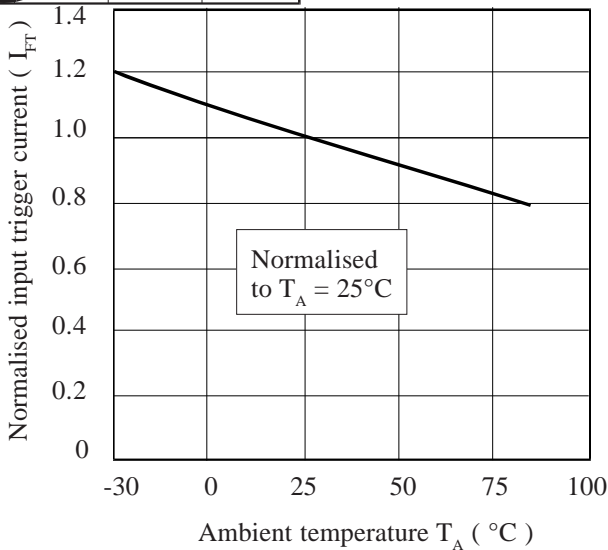
**Forward Current vs. Ambient Temperature**



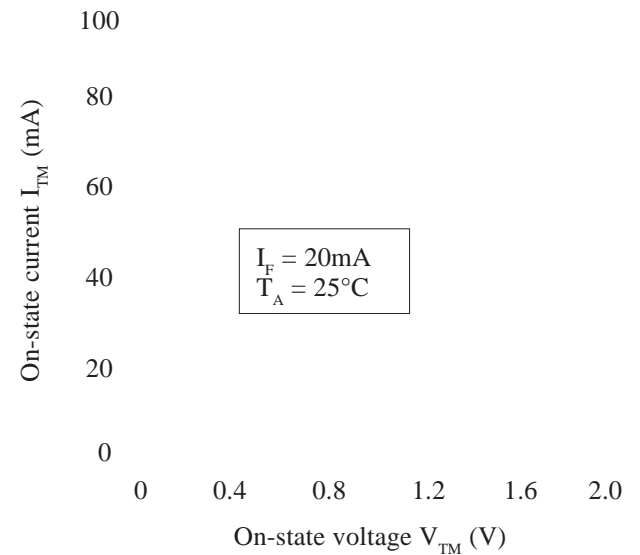
**On-state Voltage vs. Ambient Temperature**



**Normalised Input Trigger Current vs. Ambient Temperature**



**On-state Current vs. On-state Voltage**



## X-ON Electronics

Largest Supplier of Electrical and Electronic Components

*Click to view similar products for [Triac & SCR Output Optocouplers](#) category:*

*Click to view products by [Isocom](#) manufacturer:*

Other Similar products are found below :

[IL4218-X019](#) [MOC3063S-TA](#) [IL4108-X017](#) [IL410-X019T](#) [ILD207-X001T](#) [ILD615-1X007T](#) [VO2223-X001](#) [VO3063-X017T](#) [VO4254H](#)  
[WPPCT-N1066A](#) [WPPCT-N1566A](#) [WPPCT-Z546D](#) [523170E](#) [VO4256H-X007T](#) [VO4256D-X007T](#) [VO4254M](#) [VO3063-X016](#) [VO3062-](#)  
[X017T](#) [WPPCT-Z546A](#) [WPPCT-Z1046D](#) [WPPCT-Z1046A](#) [WPPCT-N566D](#) [WPPCT-N566A](#) [WPPCT-N1566D](#) [IL4108-X009T](#)  
[FODM3053V\\_NF098](#) [VO4258D](#) [VO4257M](#) [VO4156D-X007T](#) [VO4154D-X007T](#) [VOM160R-X001T](#) [TLP3082\(S,C,F\)](#) [VO4156H-X006](#)  
[VO4158H-X017T](#) [IL4116-X009T](#) [IL4208-X017T](#) [TLP3083\(TP1,F](#) [MOC3071SM](#) [tlp548j](#) [MOC3063STA1-V](#) [TLP267J\(TPL,E](#) [IL4218-X017](#)  
[SFH690C-X001T](#) [IL410-X017](#) [IL410-X001](#) [VOM160P-X001T](#) [IL4116-X007](#) [IL4117-X007](#) [VO4258D-X007T](#) [VOM3053-X001T](#)