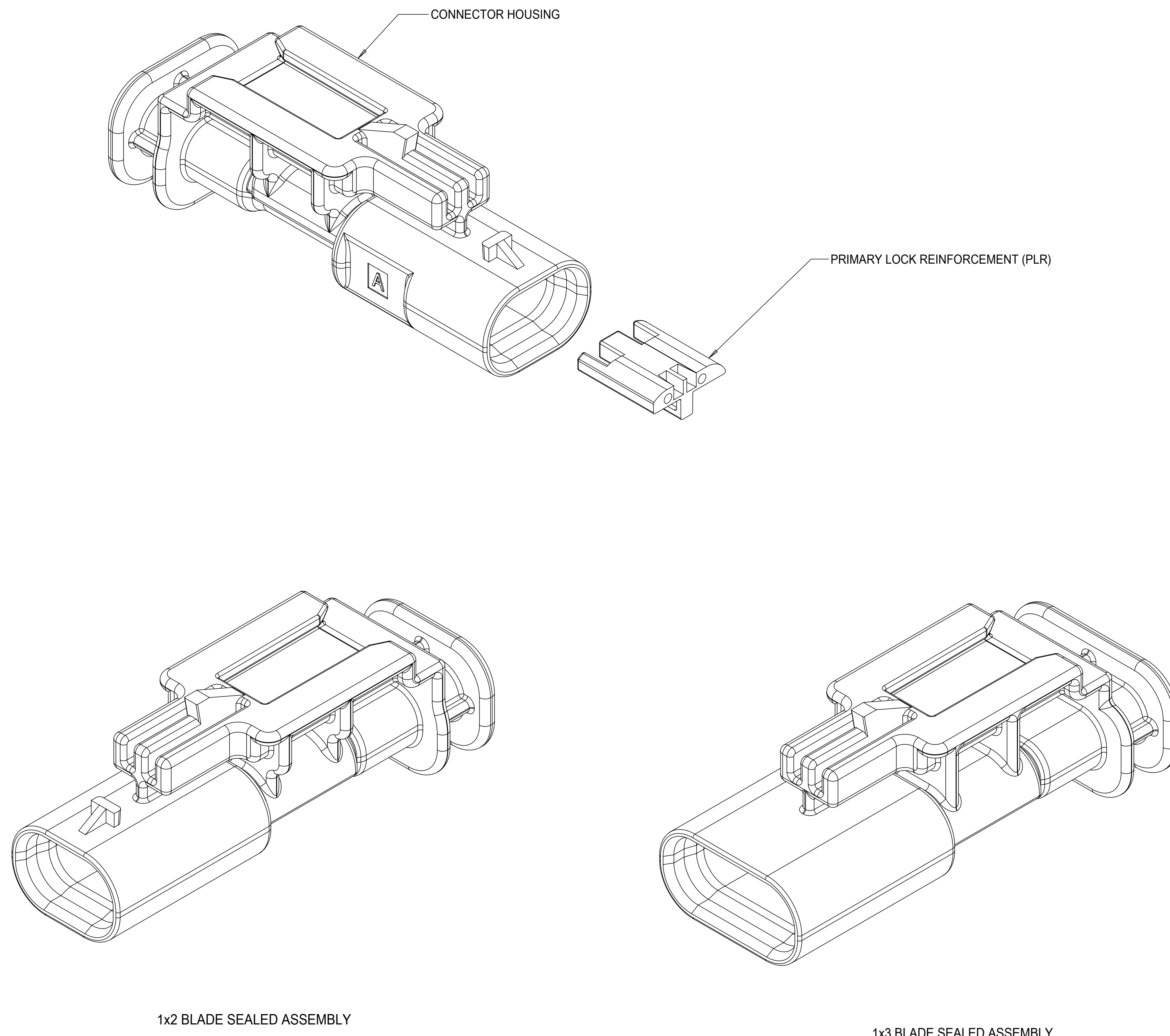


TABLE OF CONTENTS

SHEET NO.	SHEET DESCRIPTION
1	NOTES
2	1x2 BLADE SEALED ASSEMBLY KEYING CONFIGURATIONS
3	1x3 BLADE SEALED ASSEMBLY KEYING CONFIGURATIONS
4	CLIP-SLOT CONFIGURATIONS
5	BLADE SEALED ASSEMBLY
6	CONNECTION SYSTEM PACKAGING
7	WIRE DRESS COVER INTERFACE OPTIONS
8	1x2 BLADE SEALED ASSEMBLY BOM INTERFACE OPTION 1
9	1x2 BLADE SEALED ASSEMBLY BOM INTERFACE OPTION 2
10	1x3 BLADE SEALED ASSEMBLY BOM INTERFACE OPTION 1
11	1x3 BLADE SEALED ASSEMBLY BOM INTERFACE OPTION 2



NOTES: VALID UNLESS OTHERWISE SPECIFIED

1. GENERAL:

- a. APPLICATION SPECIFICATION SEE: AS-34900-0001
CONTAINS: PRODUCT INTRODUCTION, PRODUCT SUMMARY, CONNECTOR ASSEMBLY, PACKAGING INFORMATION, CONNECTOR MATING, SERVICE INSTRUCTIONS, ELECTRICAL CONTINUITY CHECKING, CRIMPING, AND TROUBLESHOOTING.
- b. PRODUCT SPECIFICATION SEE: PS-34900-0001
CONTAINS: PRODUCT INTRODUCTION, PRODUCT SUMMARY, RATINGS (CURRENT, TEMPERATURE, SEALING, AND FLAMMABILITY), AND PRODUCT VALIDATION.
- c. PACKAGING SPECIFICATION PER MOLEX DRAWING: PK-31301-898
- d. PARTS MUST BE IN COMPLIANCE TO MOLEX CHEMICAL SUBSTANCES FOR PRODUCTS AND PACKAGING SPECIFICATION: ES-40000-5016
- e. DATA MUST BE SUBMITTED UNDER THE MOLEX PART NUMBER TO IMDS (COMPANY ID#13255)

2. DESIGN - MATERIALS:

- a. SEE BOM TABLE

3. DESIGN - GEOMETRY:

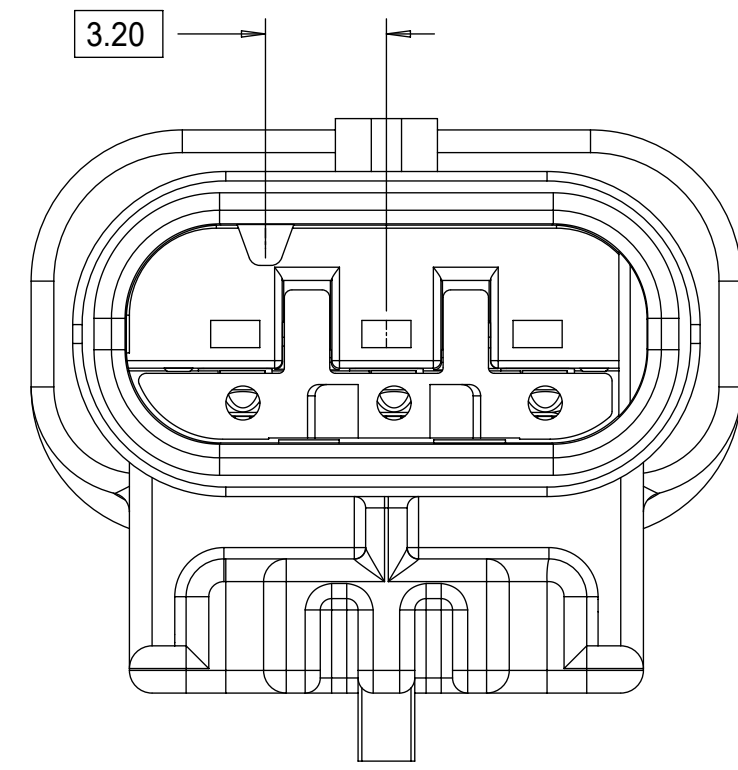
- a. THIS IS A 100% CAD GENERATED PART. THE CAD MATHEMATICAL DATA IS THE MASTER FOR THIS PART. FOR DIMENSIONAL OR ANY INFORMATION NOT SHOWN ON THIS DRAWING, ANALYZE THE CAD MODEL.
- b. GEOMETRIC DIMENSIONS AND TOLERANCES PER ASME Y14.5M - 1994
- c. EDGES AND UNDIMENSIONED DETAILS PER ISO13715
- d. CORNERS SHOWN AS SHARP TO BE R 0.2 MAX.
- e. LETTERING SHALL BE 0.15 MAX RAISED IN 0.25 MAX RECESS PAD. THIS INCLUDES RECYCLING CODE, CAVITY ID, VENDOR IDENTIFICATION,
- f. VISUAL DEFECTS SHALL MEET COSMETIC STANDARD PS-45499-002 (Class B)
- g. LASER MARKING:
 - 1. PART NUMBER
 - 2. DAY OF THE YEAR
 - 3. SHIFT
 - 4. YEAR

INSPECTION NUMBER LOG
LAST NUMBER USED:
ADDED:
REMOVED:

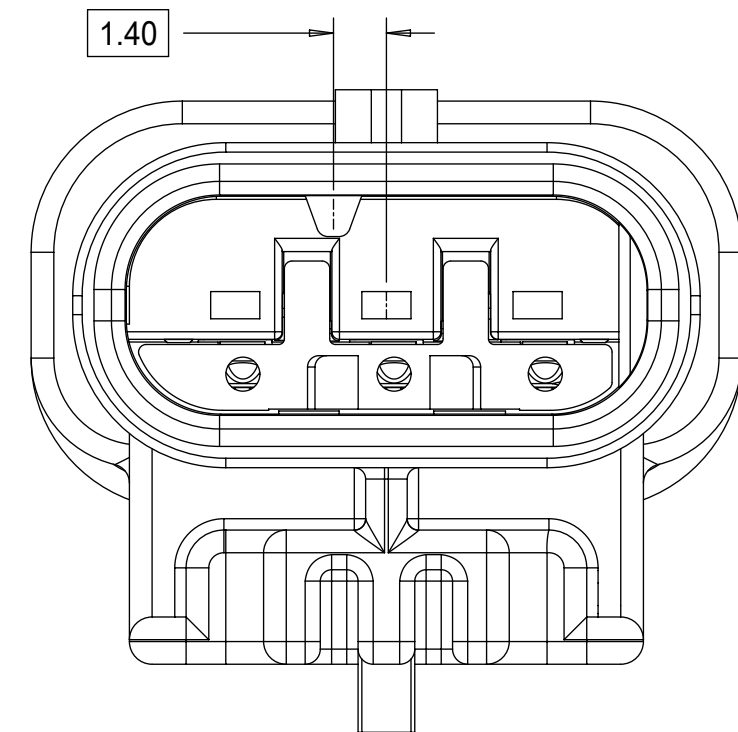
A15	- NX-REMASTERING FROM MODEL MANAGER - 1x2 KEY C MOVED TO SALEABLE - 1X3 WDC INTERFACE 2 PART NUMBERS UPDATED TO MATCH E-DRAWING
A14	CORRECTED CHARTED DIMENSION 3 FOR 1X3 11MM CLIPSLOT
A13	1x3 KEY A&B SALEABLE (NON 40G)
A12	1X2 KEYS A&B W/ WDC SALEABLE
A11	CORRECTED REVISION LOG
A10	1X2,1X3 WIRE DRESS FEATURES OK TO TOOL
A9	1X2,1X3 PART # STATUS UPDATED
A8	1X2 40G CLIP-SLOT OK TO TOOL
A7	1X2,1X3 PART # UPDATED TO "TOOLED BUT NOT VALIDATED"
A6	ADDED 40G CLIP-SLOT PART NUMBERS
A5	BOM CORRECTIONS AND UPDATES
A4	BOM CORRECTIONS AND UPDATES
A3	1x2, 1x3 NON-SIR PART# OK TO TOOL
A2	ADDED 1x3 11mm CLIP-SLOT PART #
A	ADDED BLACK PART# AND MINOR BOM UPDATES
6	ADDED CLIP SLOT CONFIGURATIONS
5	1X3 BOM UPDATED
4	1X3 INLINE ASSY VIEWS ADDED
3	MINOR BOM CORRECTIONS
2	UPDATED PACKAGING DIMENSIONS
1	INITIAL RELEASE
REV	DESCRIPTION

QUALITY SYMBOLS	THIS DRAWING CONTAINS INFORMATION THAT IS PROPRIETARY TO MOLEX ELECTRONIC TECHNOLOGIES, LLC AND SHOULD NOT BE USED WITHOUT WRITTEN PERMISSION		GENERAL TOLERANCES (UNLESS SPECIFIED)		DIMENSION UNITS	SCALE	molex®	
▽ = 0	2017/04/11	2017/06/22	MM	4:1	MM	4:1	1.2MM 1X2, 1X3 BLADE SEALED ASSEMBLY CABLE SEAL	
▽ = 0			ANGULAR TOL ± 3.0 °		DRWN BY	DATE	PRODUCT CUSTOMER DRAWING	
▽ = 0			4 PLACES ±		SKRAJENDRANA	2013/11/06	SERIES MATERIAL NUMBER CUSTOMER	
▽ = 0			3 PLACES ±		CHKD BY	DATE	34899 SEE BOM GENERAL MARKET	
▽ = 0			2 PLACES ± 0.1		APPR BY	DATE	DOCUMENT NUMBER DOC TYPE DOC PART SHEET NUMBER	
▽ = 0			1 PLACE ± 0.2		DRAWING SIZE	THIRD ANGLE PROJECTION	SD-34899-2001 PSD 001 1 OF 11	
▽ = 0			0 PLACES ± 0.5		DRAFT WHERE APPLICABLE MUST REMAIN WITHIN DIMENSIONS			
▽ = 0								
▽ = 0								
▽ = 0								
▽ = 0								

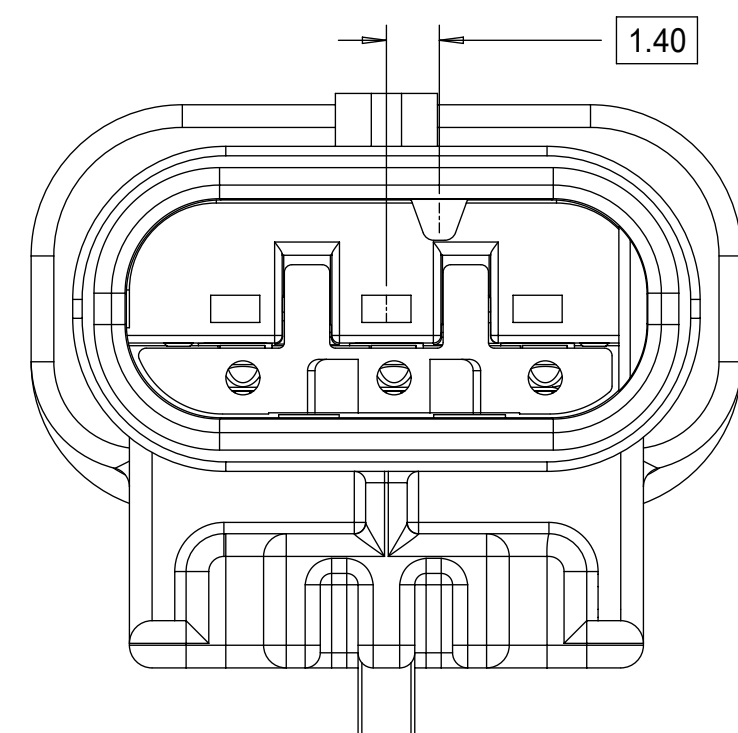
1x3 BLADE SEALED ASSEMBLY KEYING CONFIGURATIONS. FOR PART NUMBERS REFER TO BOM SHEET.



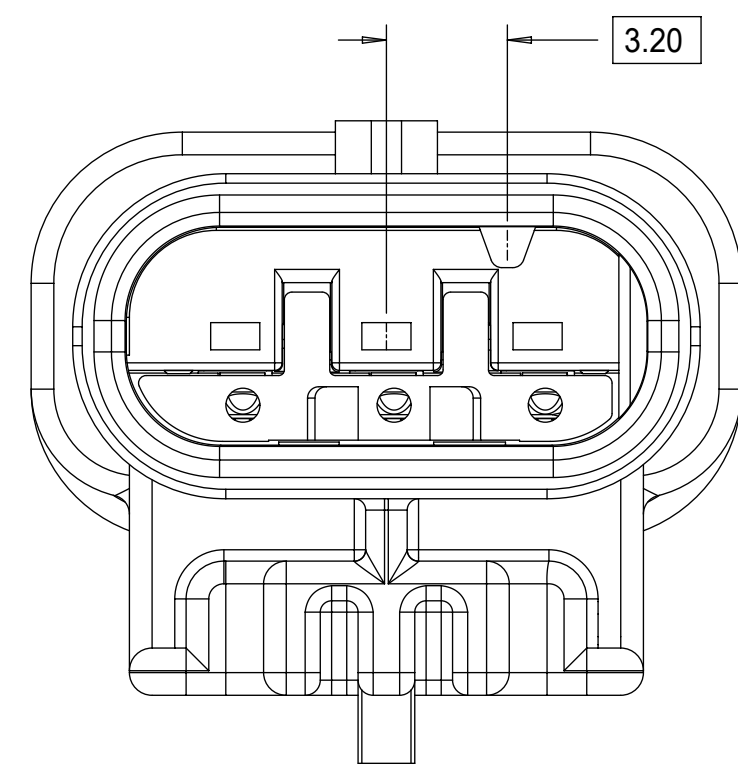
KEYING OPTION A



KEYING OPTION B



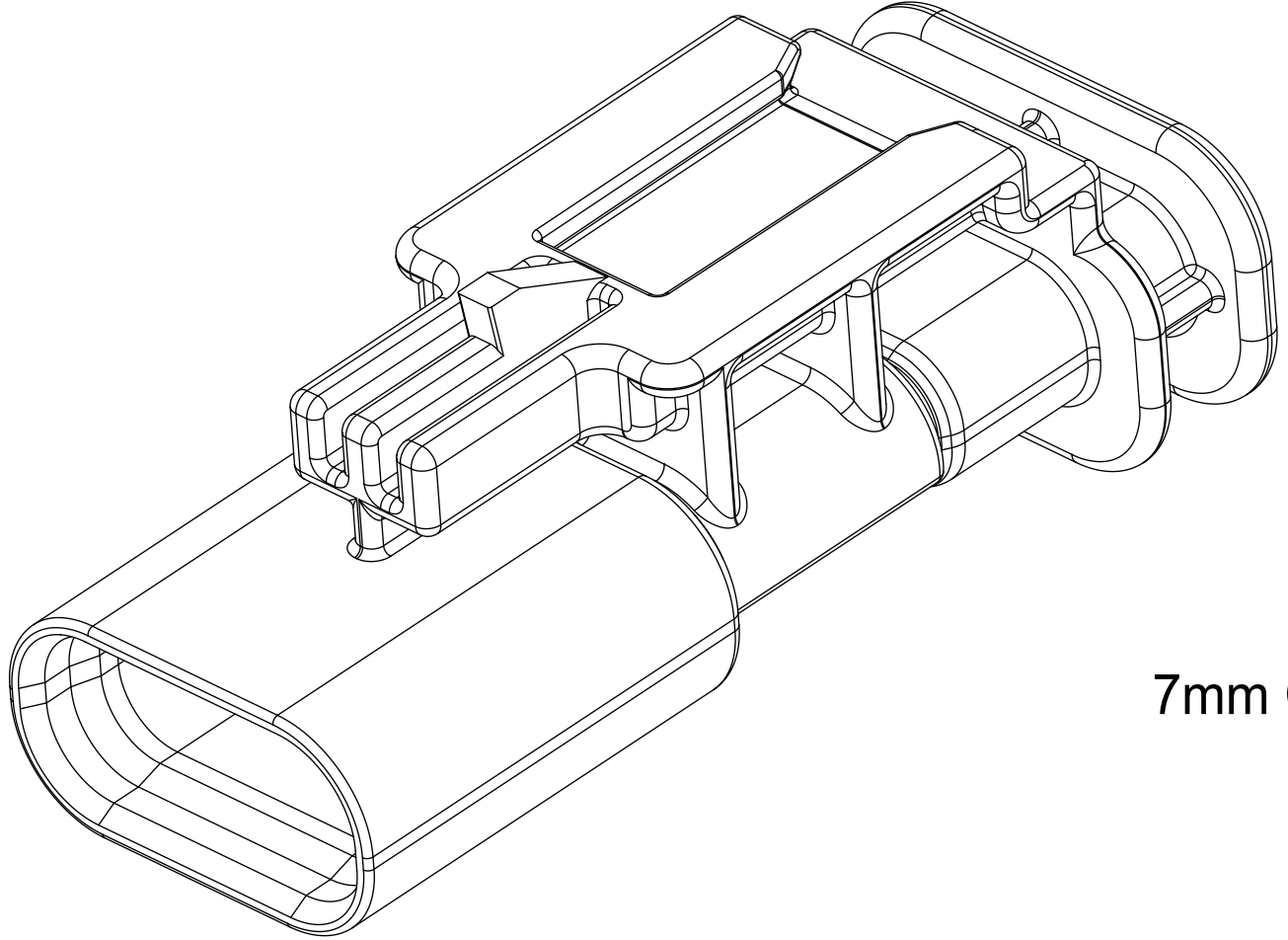
KEYING OPTION C



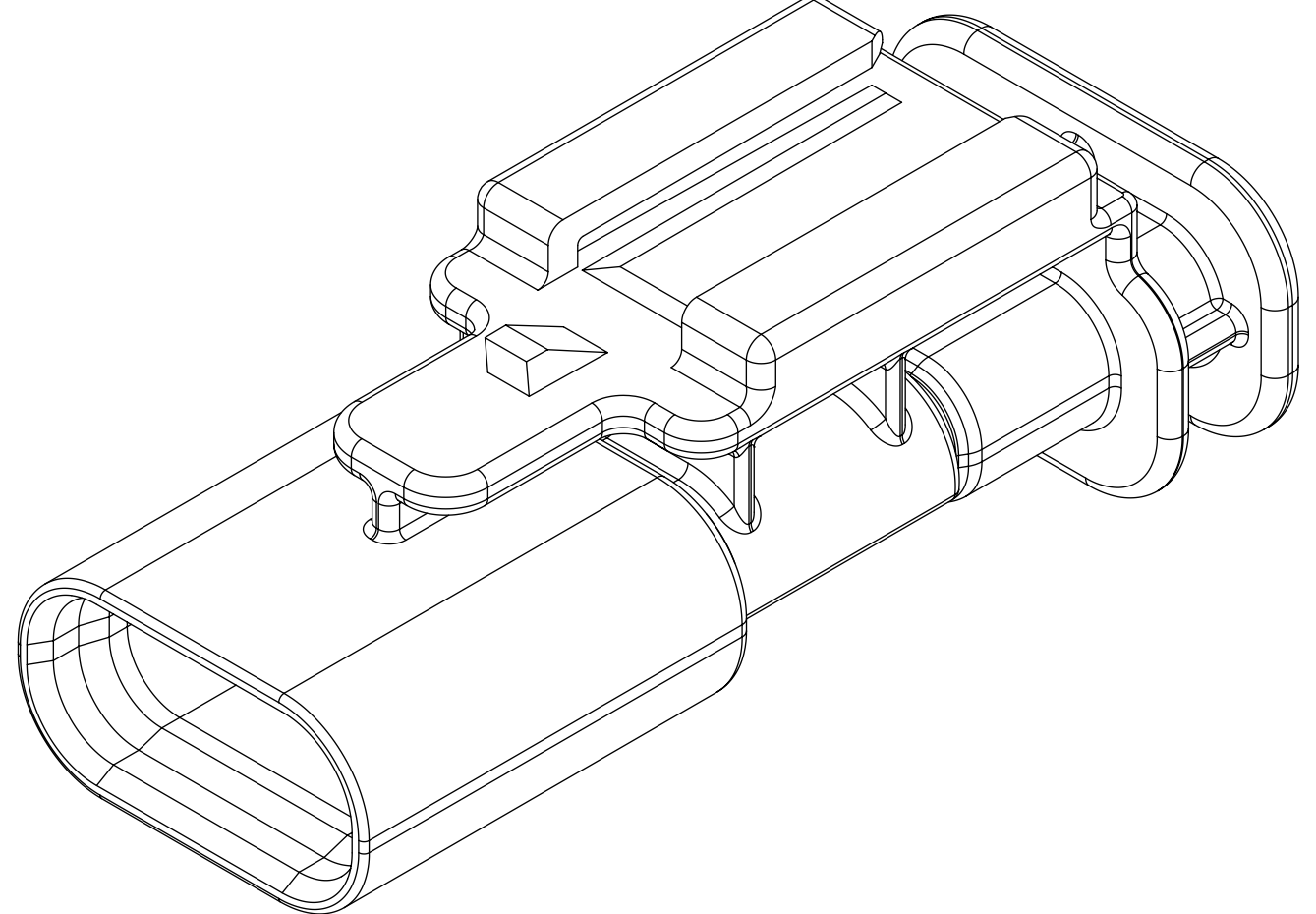
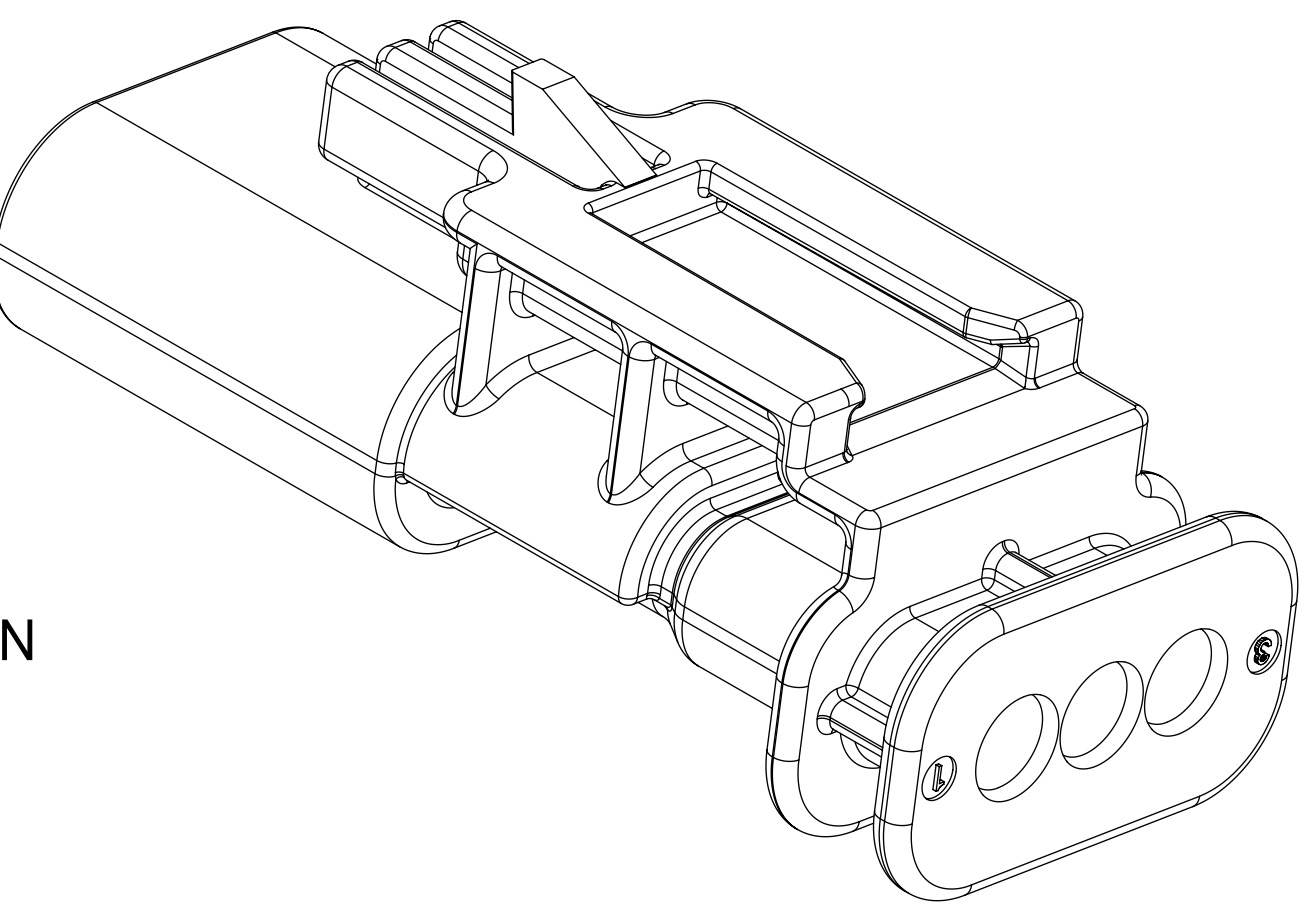
KEYING OPTION D

QUALITY SYMBOLS ▽ = 0 ▽ = 0 ▽ = 0 ▽ = 0 ▽ = 0 ▽ = 0 ▽ = 0 ▽ = 0 ▽ = 0 ▽ = 0		THIS DRAWING CONTAINS INFORMATION THAT IS PROPRIETARY TO MOLEX ELECTRONIC TECHNOLOGIES, LLC AND SHOULD NOT BE USED WITHOUT WRITTEN PERMISSION		GENERAL TOLERANCES (UNLESS SPECIFIED) ANGULAR TOL ± 3.0 ° 4 PLACES ± 3 PLACES ± 2 PLACES ± 0.1 1 PLACE ± 0.2 0 PLACES ± 0.5 DRAFT WHERE APPLICABLE MUST REMAIN WITHIN DIMENSIONS		DIMENSION UNITS: MM SCALE: 5:1 DRWN BY: SKRAJENDRANA DATE: 2013/11/06 CHKD BY: DATE: APPR BY: DATE: DRAWING SIZE: D THIRD ANGLE PROJECTION		molex 1.2MM 1X2, 1X3 BLADE SEALED ASSEMBLY CABLE SEAL PRODUCT CUSTOMER DRAWING		SERIES: 34899 MATERIAL NUMBER: SEE BOM CUSTOMER: GENERAL MARKET	
EC NO: 117908 DRWN: VYARAPPA CHKD: APPR: KDEKOSKI		2017/04/11 2017/06/22		A15		DOCUMENT NUMBER: SD-34899-2001 DOC TYPE: PSD DOC PART: 001 SHEET NUMBER: 3 OF 11		RELEASE STATUS: P1 RELEASE DATE: 22.06.2017 19:25:24		19 18 17 16 15 14 13 12 11 10 9 8 7 6 5 4 3 2 1	

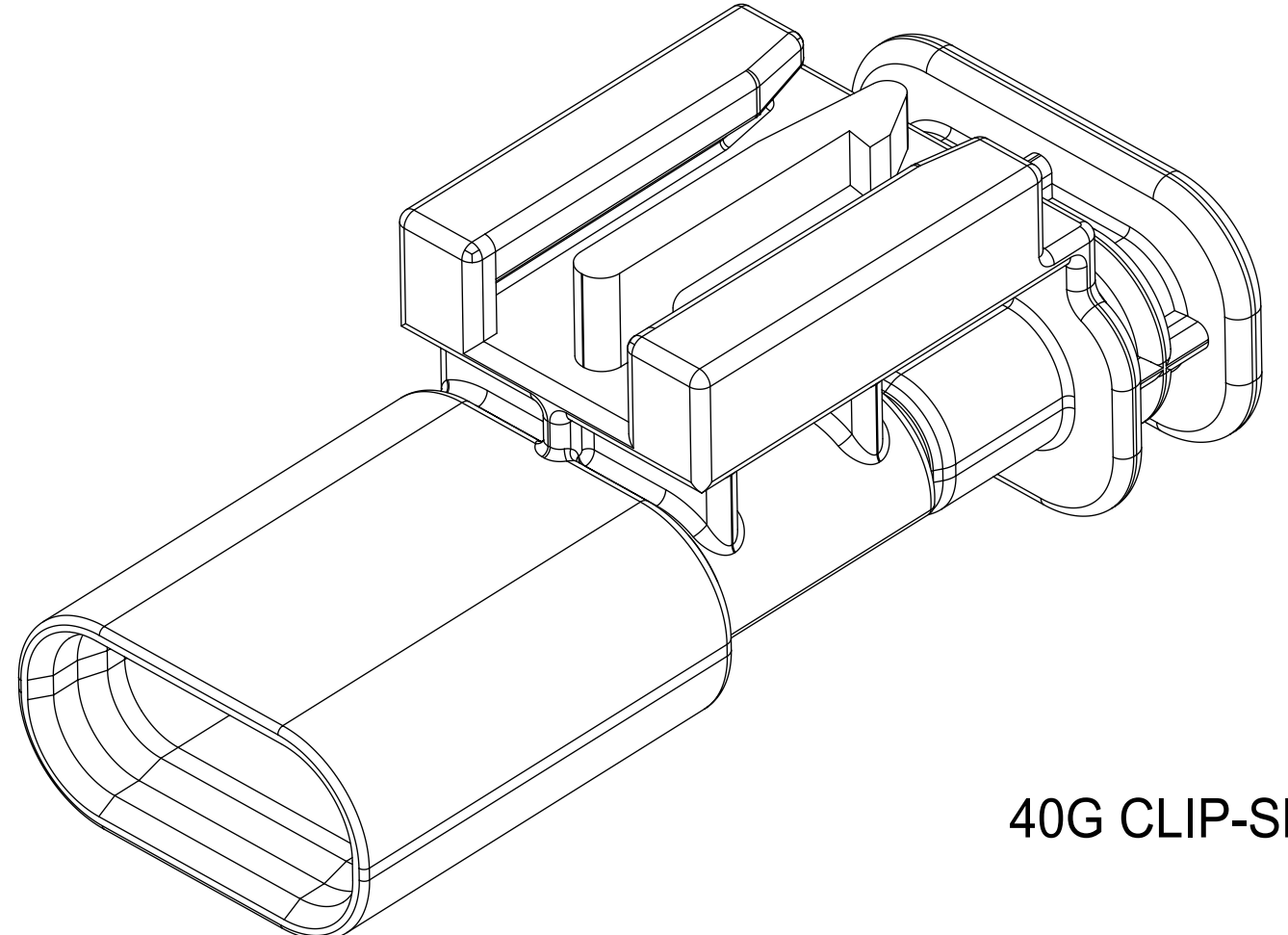
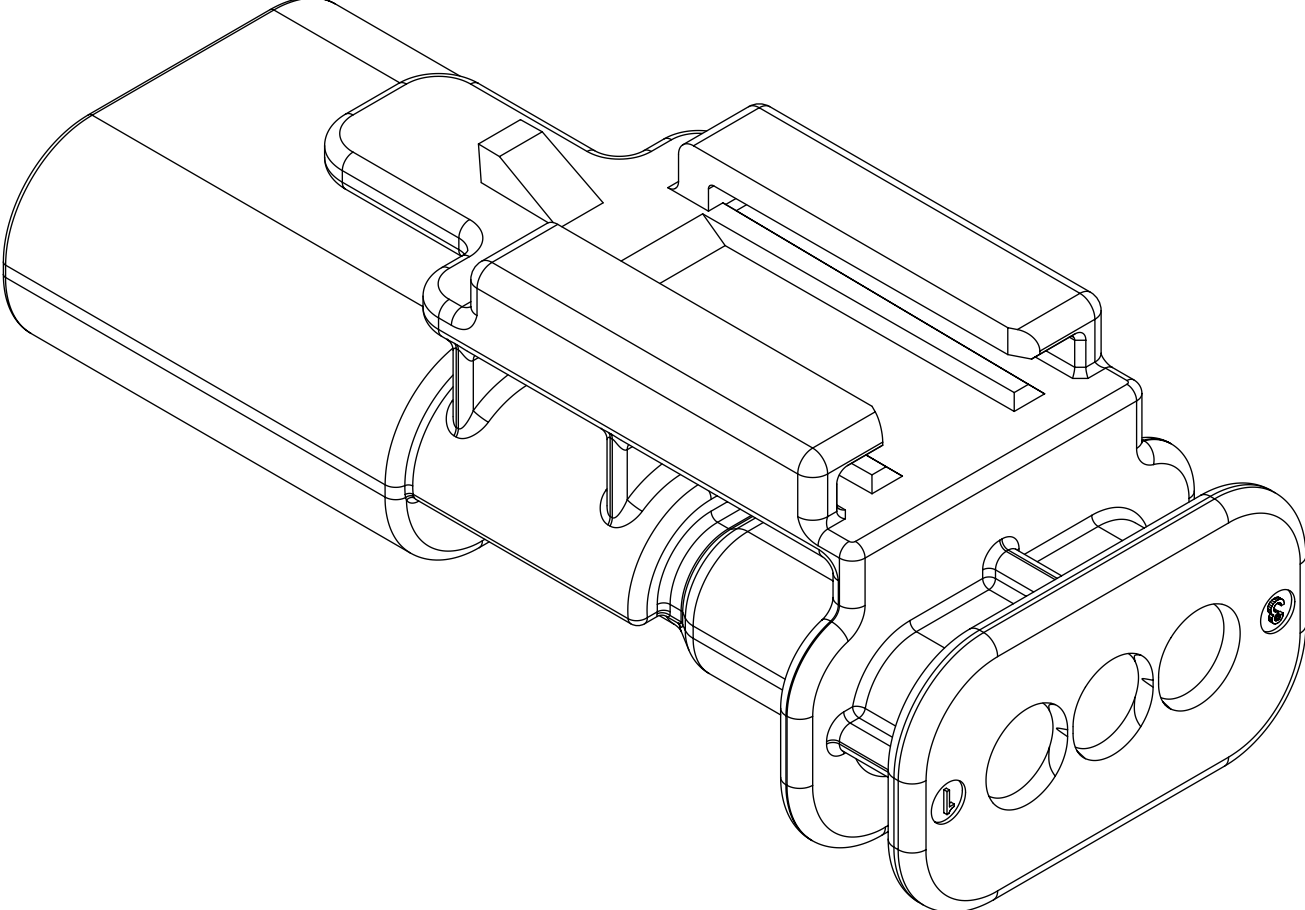
CLIP-SLOT CONFIGURATIONS. FOR PART NUMBERS REFER TO BOM SHEET.



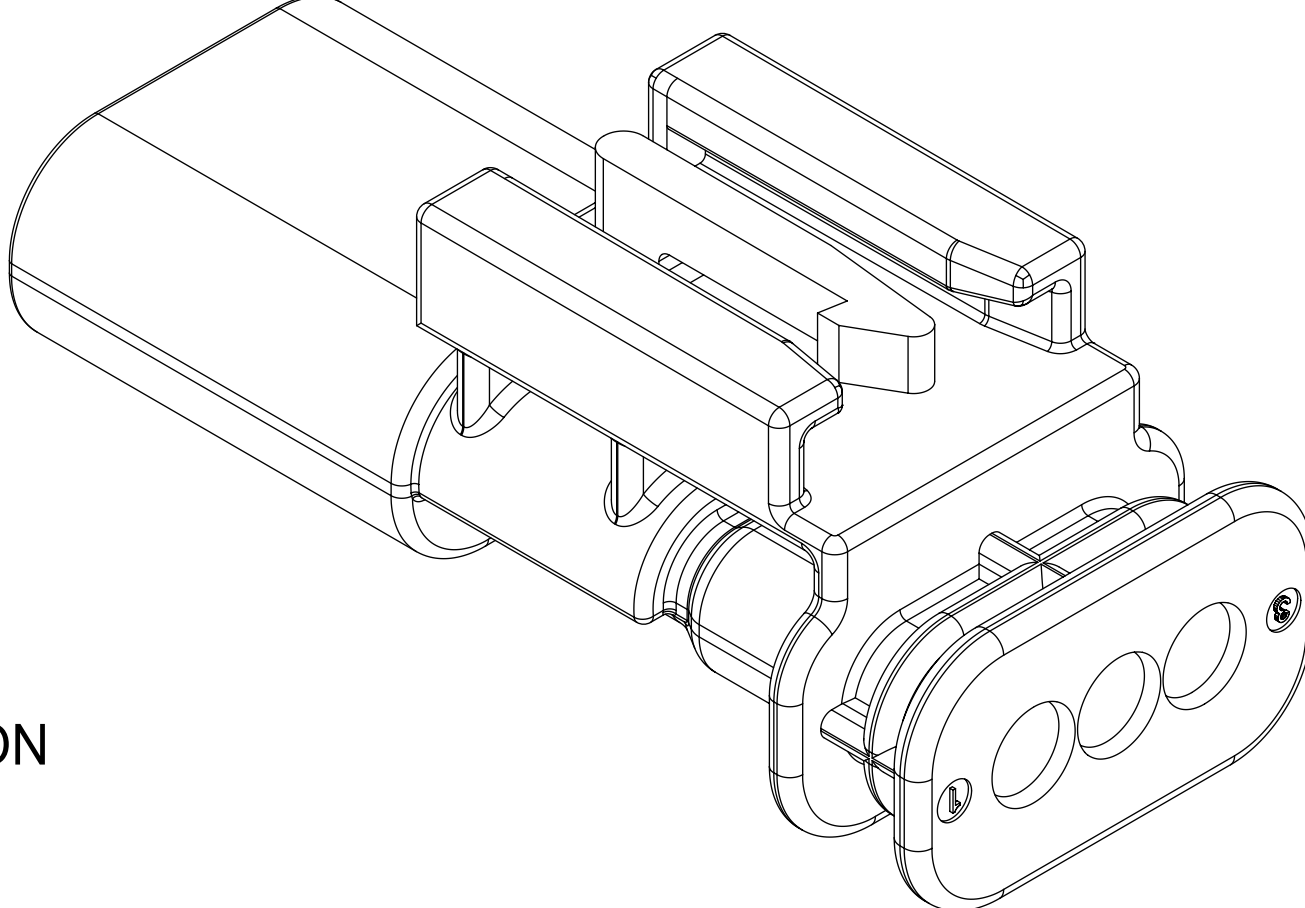
7mm CLIP-SLOT OPTION



11mm CLIP-SLOT OPTION

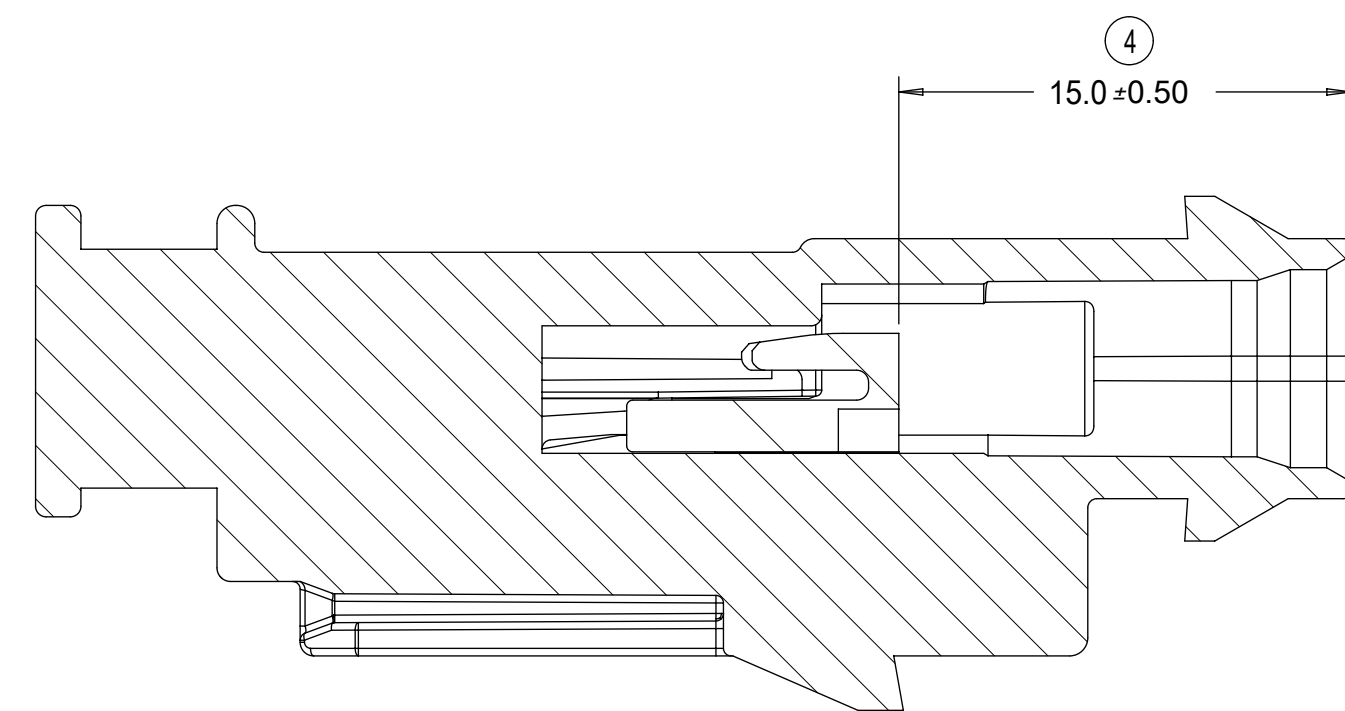
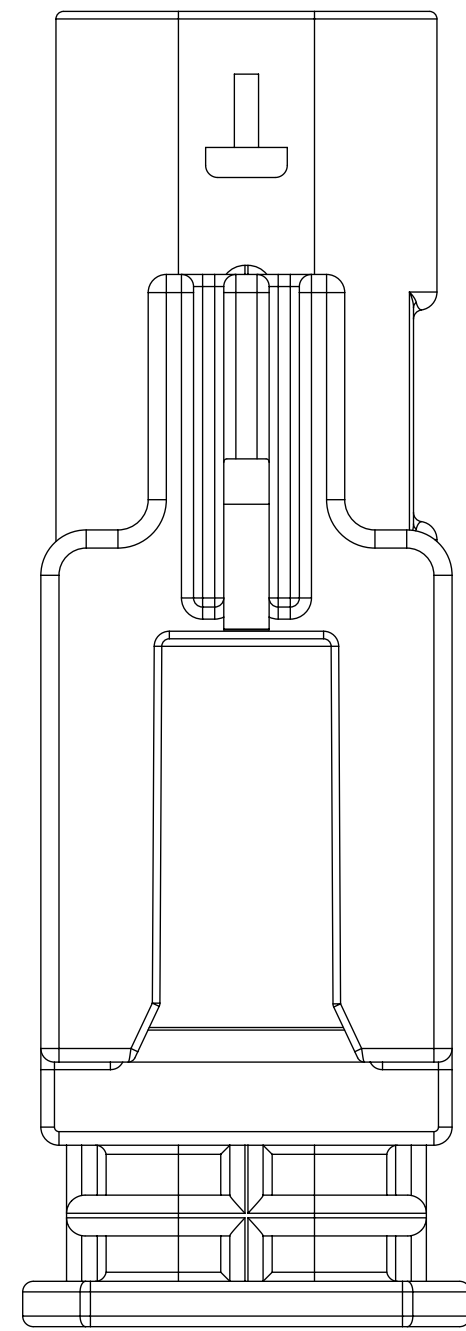
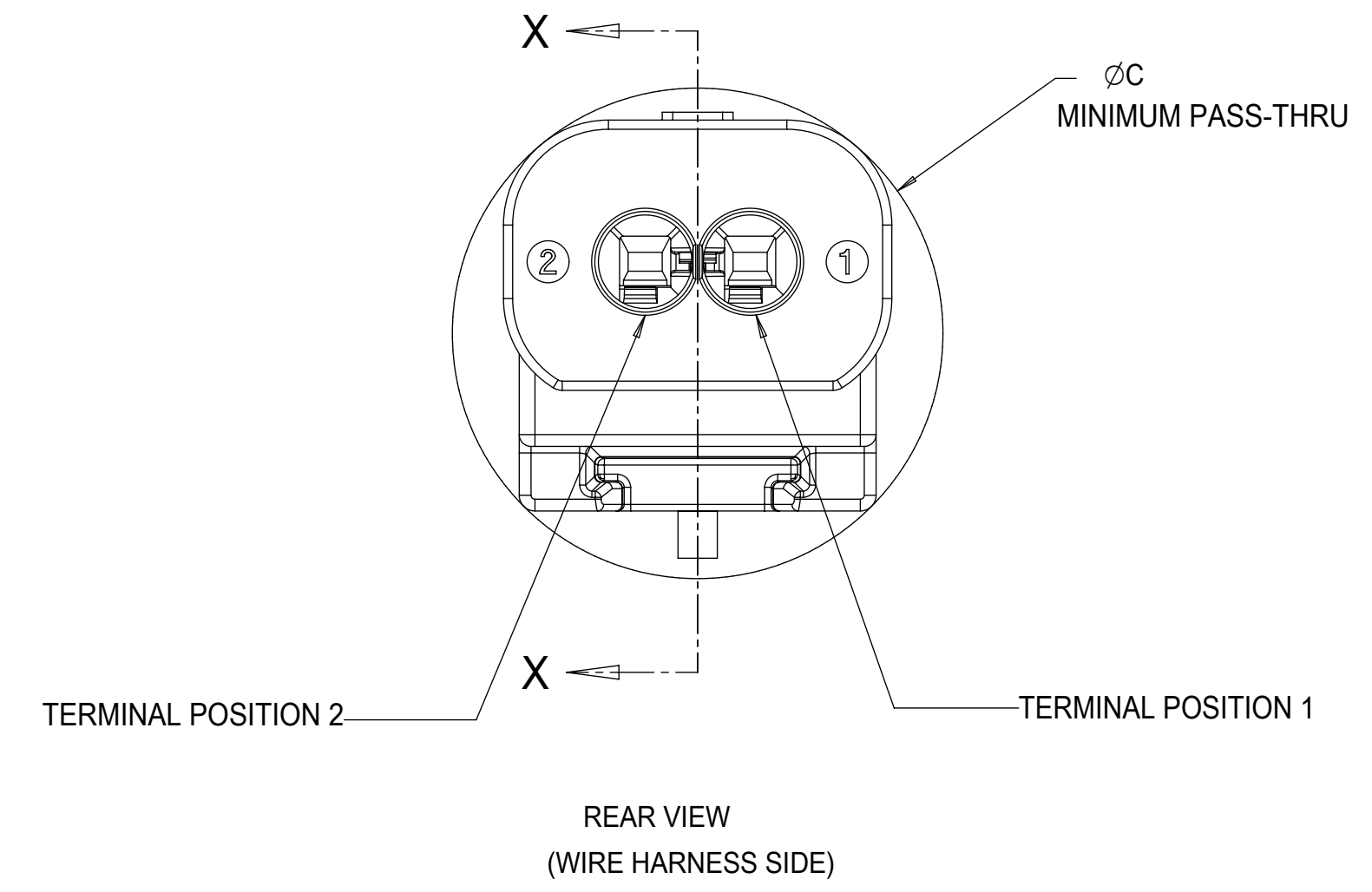
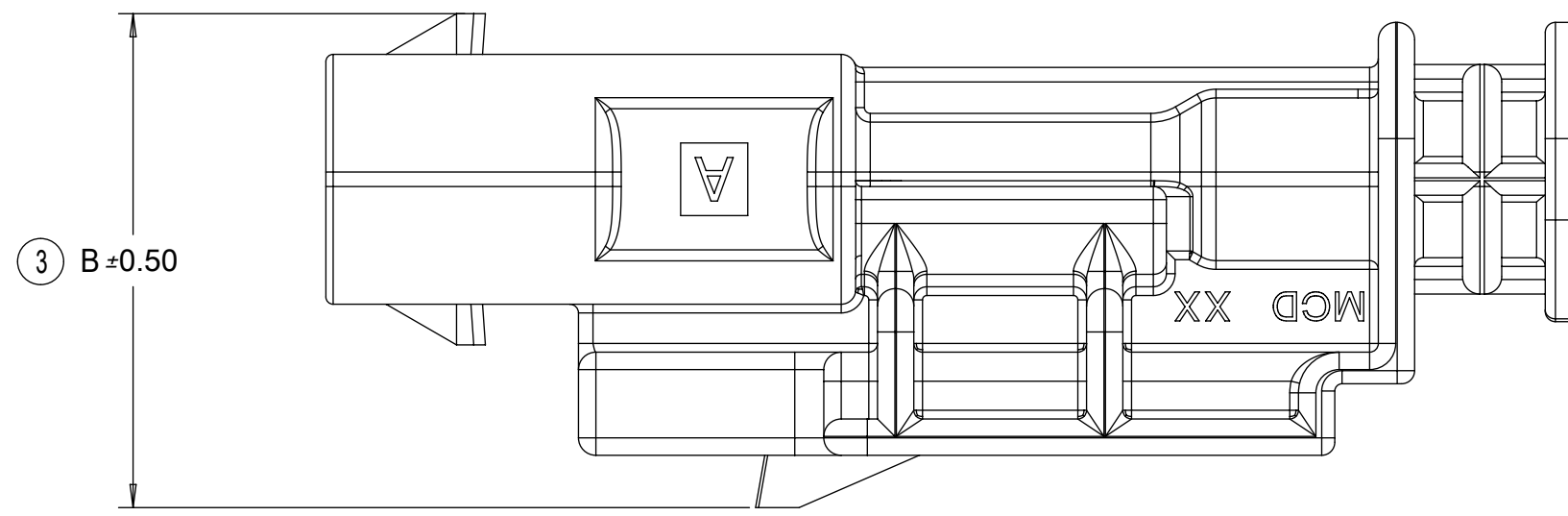
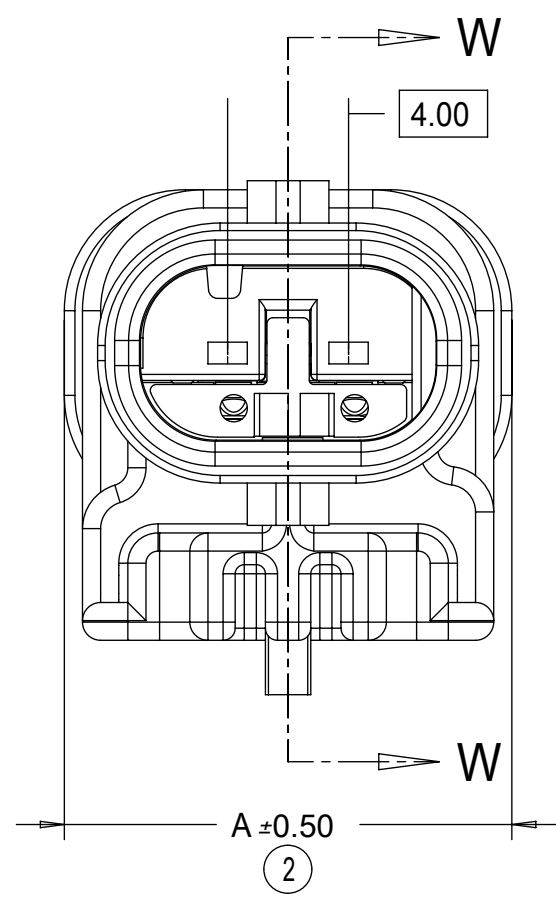
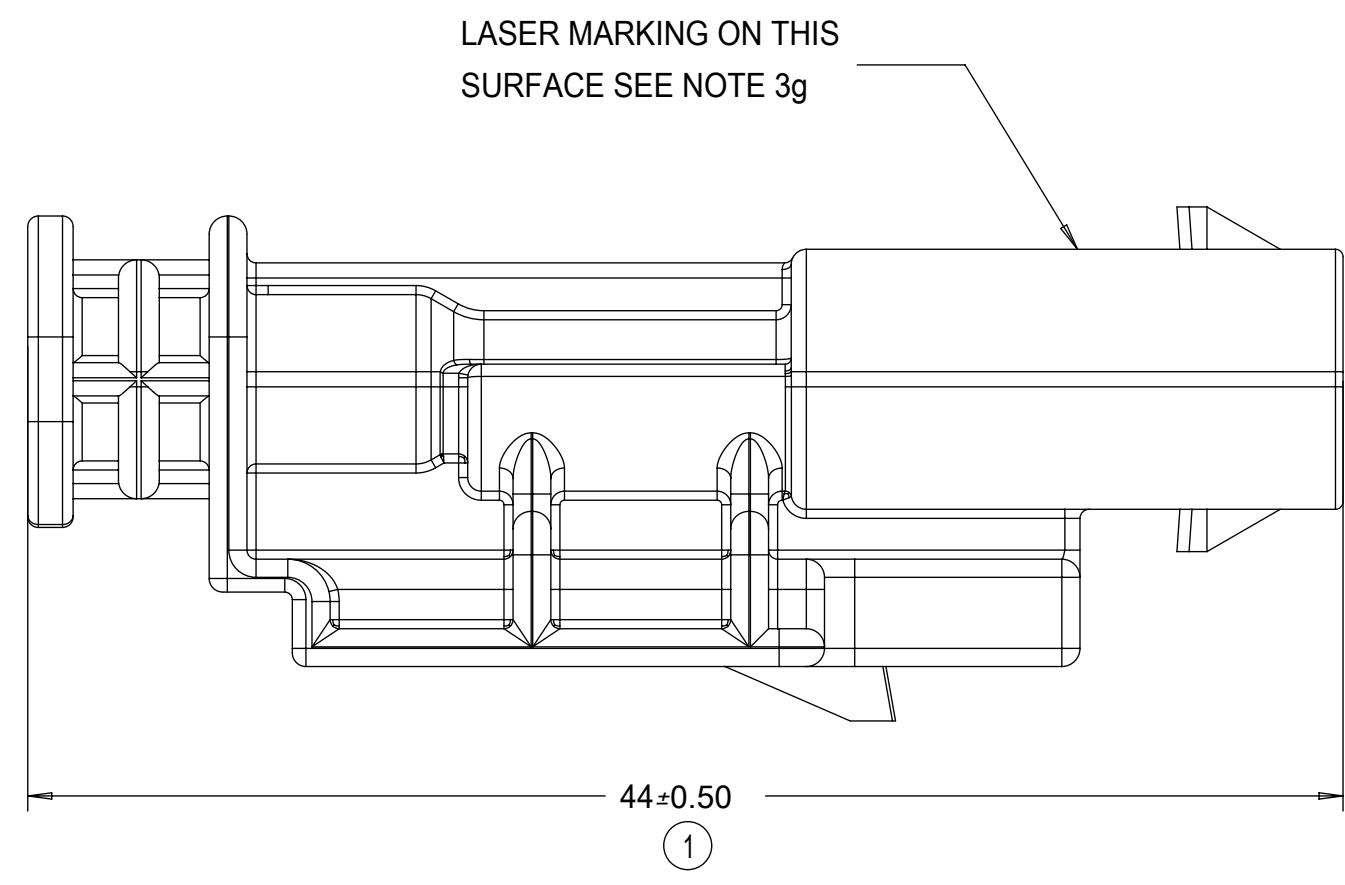


40G CLIP-SLOT OPTION

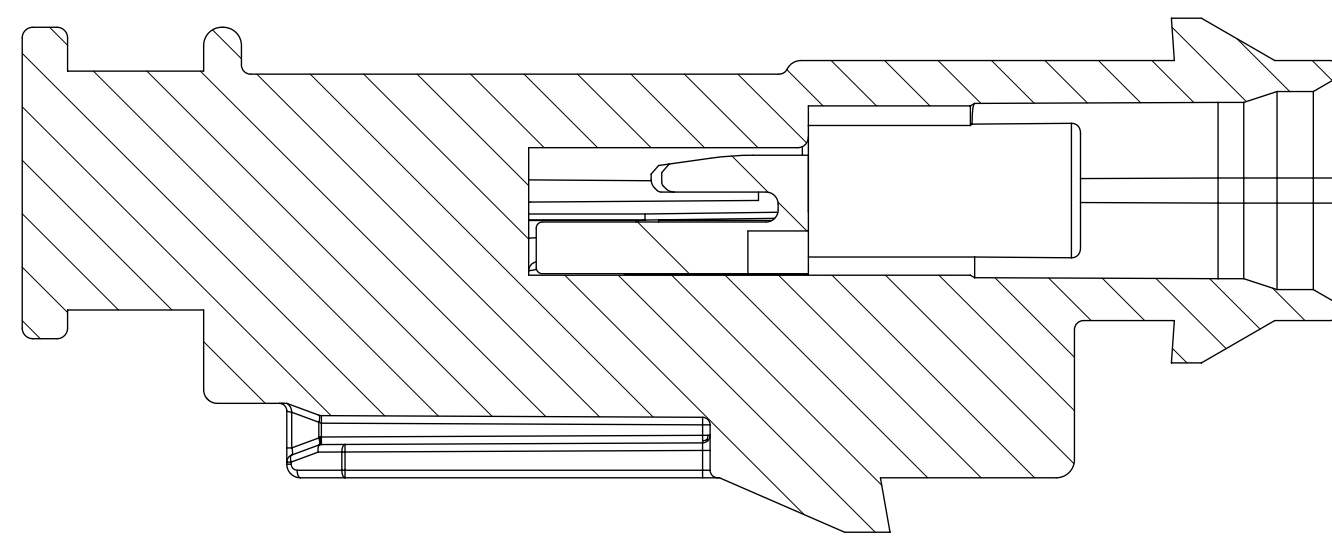


QUALITY SYMBOLS ▽ = 0 ▽ = 0 ▽ = 0 ▽ = 0 ▽ = 0 ▽ = 0 ▽ = 0 ▽ = 0 ▽ = 0 ▽ = 0		THIS DRAWING CONTAINS INFORMATION THAT IS PROPRIETARY TO MOLEX ELECTRONIC TECHNOLOGIES, LLC AND SHOULD NOT BE USED WITHOUT WRITTEN PERMISSION		GENERAL TOLERANCES (UNLESS SPECIFIED) ANGULAR TOL ± 3.0 ° 4 PLACES ± 3 PLACES ± 2 PLACES ± 0.1 1 PLACE ± 0.2 0 PLACES ± 0.5 DRAFT WHERE APPLICABLE MUST REMAIN WITHIN DIMENSIONS		DIMENSION UNITS: MM SCALE: 4:1 DRWN BY: SKRAJENDRANA DATE: 2013/11/06 CHKD BY: DATE: APPR BY: DATE: DRAWING SIZE: D THIRD ANGLE PROJECTION		molex 1.2MM 1X2, 1X3 BLADE SEALED ASSEMBLY CABLE SEAL PRODUCT CUSTOMER DRAWING SERIES: 34899 MATERIAL NUMBER: SEE BOM CUSTOMER: GENERAL MARKET	
EC NO: 117908 DRWN: VYARAPPA CHKD: APPR: KDEKOSKI		2017/04/11 2017/06/22		A15		DOCUMENT NUMBER: SD-34899-2001 DOC TYPE: PSD DOC PART: 001 SHEET NUMBER: 4 OF 11		RELEASE STATUS: P1 RELEASE DATE: 22.06.2017 19:25:24	

BLADE SEALED ASSEMBLY



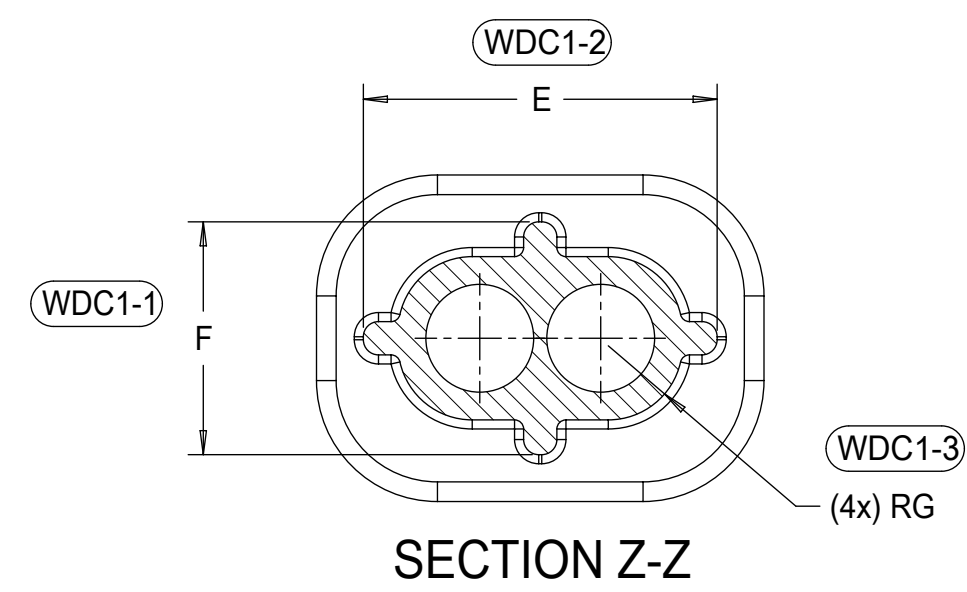
PRIMARY LOCK REINFORCEMENT (PLR) SHOWN
IN THE PRE-STAGED POSITION
SECTION W-W



PRIMARY LOCK REINFORCEMENT (PLR) SHOWN
IN THE FINAL-LOCK POSITION
SECTION X-X

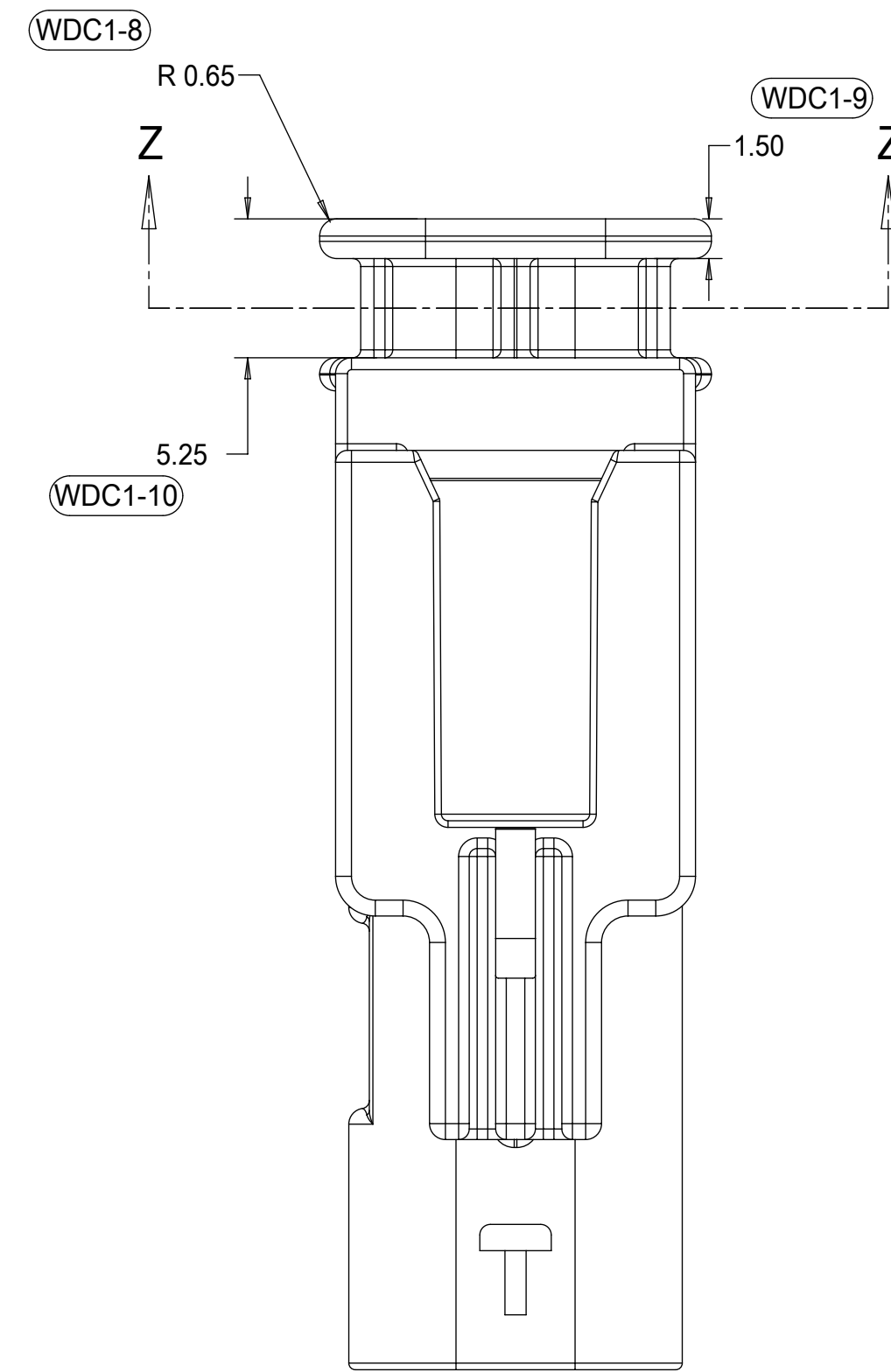
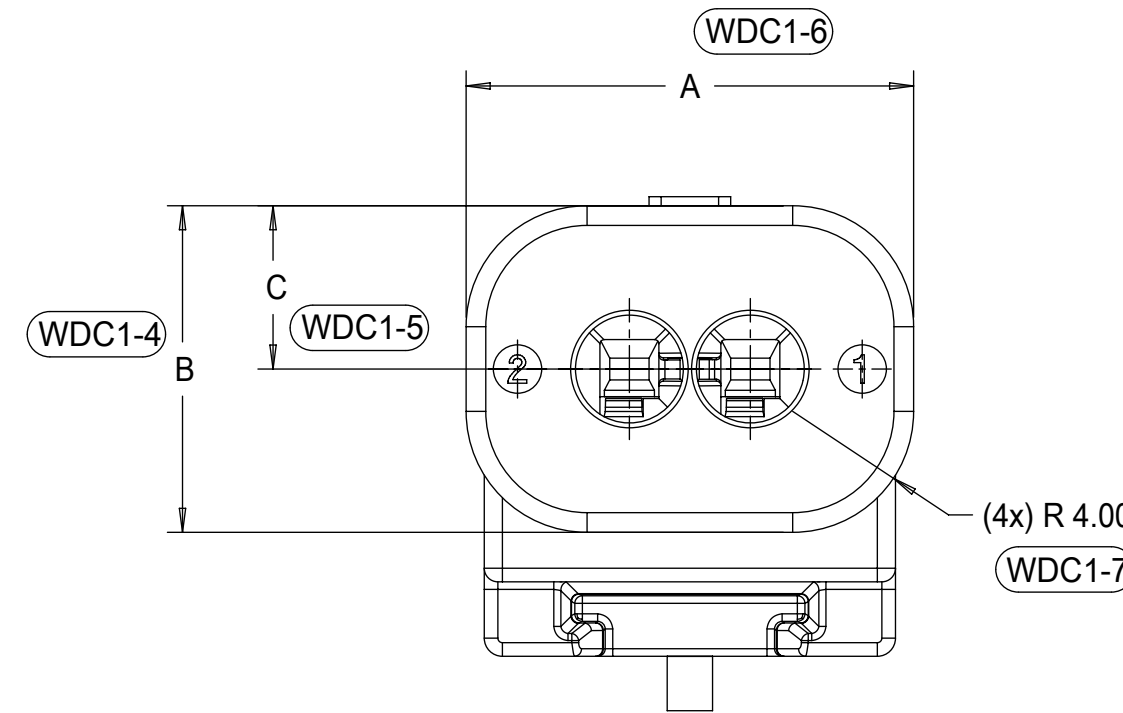
1x3 BLADE SEALED ASSEMBLY, 40G CLIP SLOT	19	16.75	21.75
1x3 BLADE SEALED ASSEMBLY, 11mm CLIP SLOT	19	14.6	20.75
1x3 BLADE SEALED ASSEMBLY, 7mm CLIP SLOT	19	17	20.5
1x2 BLADE SEALED ASSEMBLY, 40G CLIP SLOT	15	16.75	20.25
1x2 BLADE SEALED ASSEMBLY, 11mm CLIP SLOT	15	15.5	19
1x2 BLADE SEALED ASSEMBLY, 7mm CLIP SLOT	15	17	18.75
CONFIGURATION	A	B	C
CHARTED DIMENSIONS			

THIS DRAWING CONTAINS INFORMATION THAT IS PROPRIETARY TO MOLEX ELECTRONIC TECHNOLOGIES, LLC AND SHOULD NOT BE USED WITHOUT WRITTEN PERMISSION										
QUALITY SYMBOLS	EC NO: 117908 DRWN: VYARAPPA CHK'D: REV APPR: KDEKOSKI	2017/04/11 2017/06/22	GENERAL TOLERANCES (UNLESS SPECIFIED)		DIMENSION UNITS	SCALE				
			ANGULAR TOL ± 3.0 °		MM	4:1				
▽ = 0	DRAFT WHERE APPLICABLE MUST REMAIN WITHIN DIMENSIONS	D	4 PLACES ±	SKRAJENDRANA	DATE	1.2MM 1X2, 1X3 BLADE SEALED ASSEMBLY CABLE SEAL				
▽ = 0			3 PLACES ±	2013/11/06						
▽ = 0			2 PLACES ± 0.1	CHKD BY	DATE	PRODUCT CUSTOMER DRAWING				
▽ = 0			1 PLACE ± 0.2	APPR BY	DATE					
▽ = 0			0 PLACES ± 0.5	DRAWING SIZE	THIRD ANGLE PROJECTION	SERIES	MATERIAL NUMBER	CUSTOMER		
▽ = 0						34899	SEE BOM	GENERAL MARKET		
▽ = 0				DOCUMENT NUMBER	DOC TYPE	DOC PART	SHEET NUMBER			
				A15	PSD	001	5 OF 11			

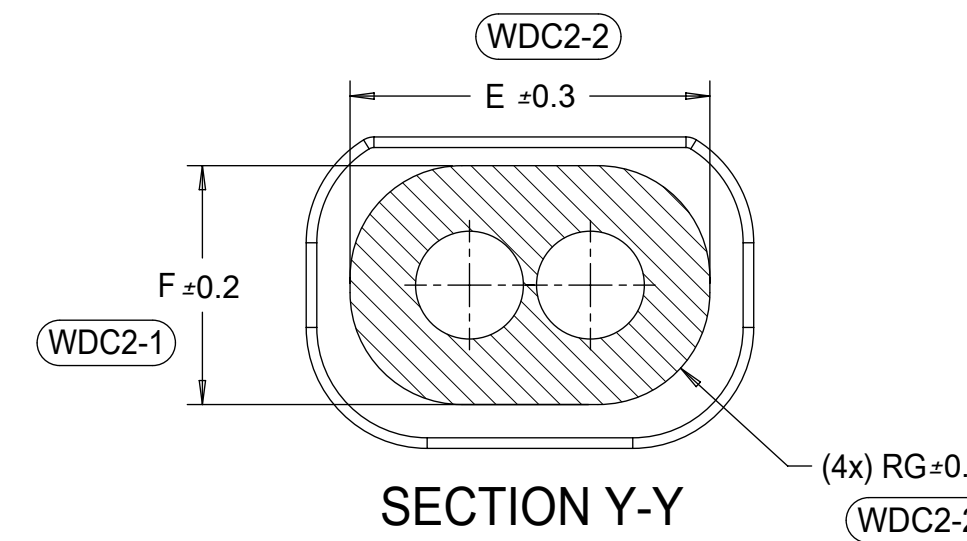


3 CIRCUIT	18.8	10.8	5.4	15.7	7.7	2.45
2 CIRCUIT	14.8	10.8	5.4	11.7	7.7	2.45
CONFIGURATION	A	B	C	E	F	G

CHARTED DIMENSIONS

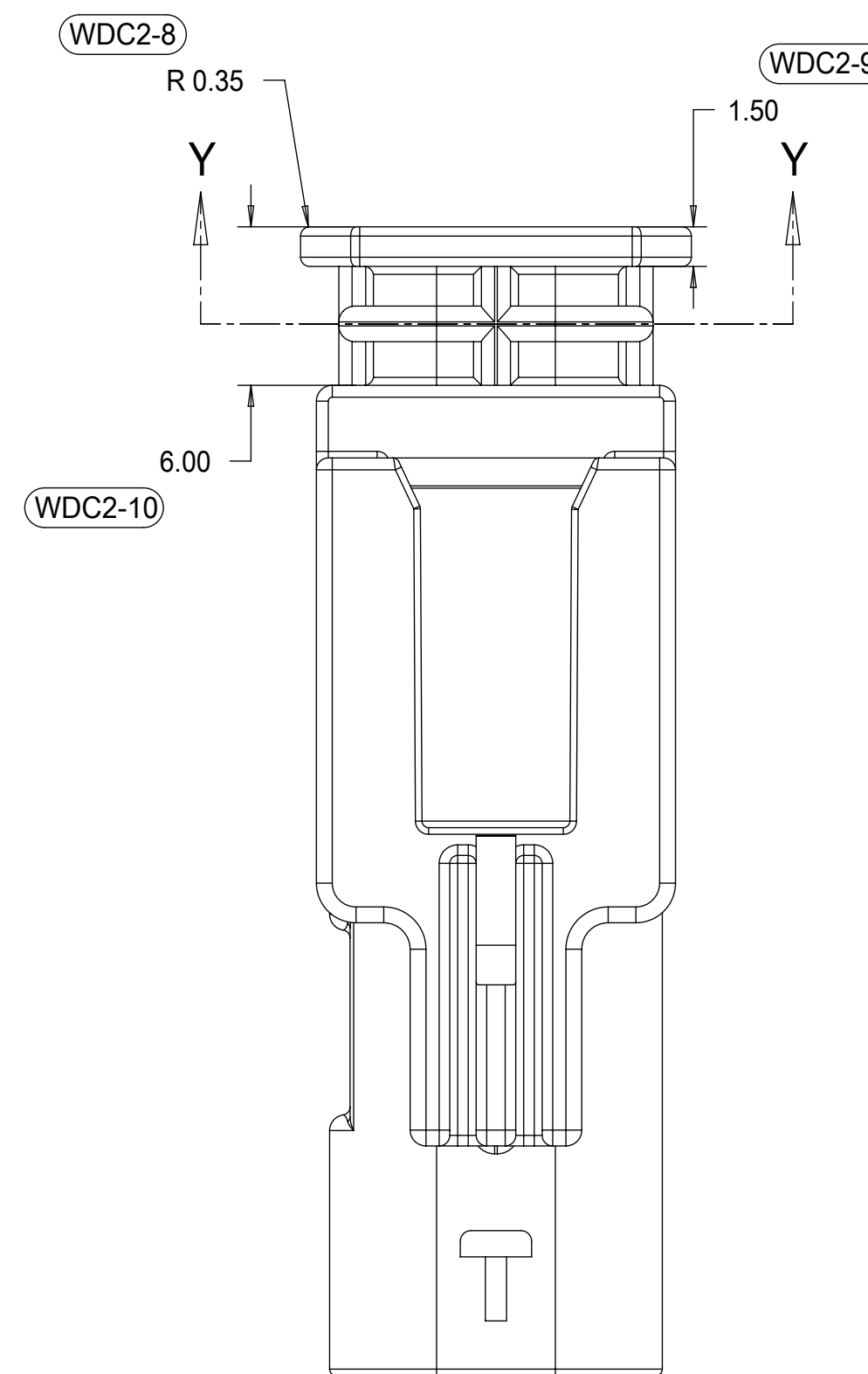
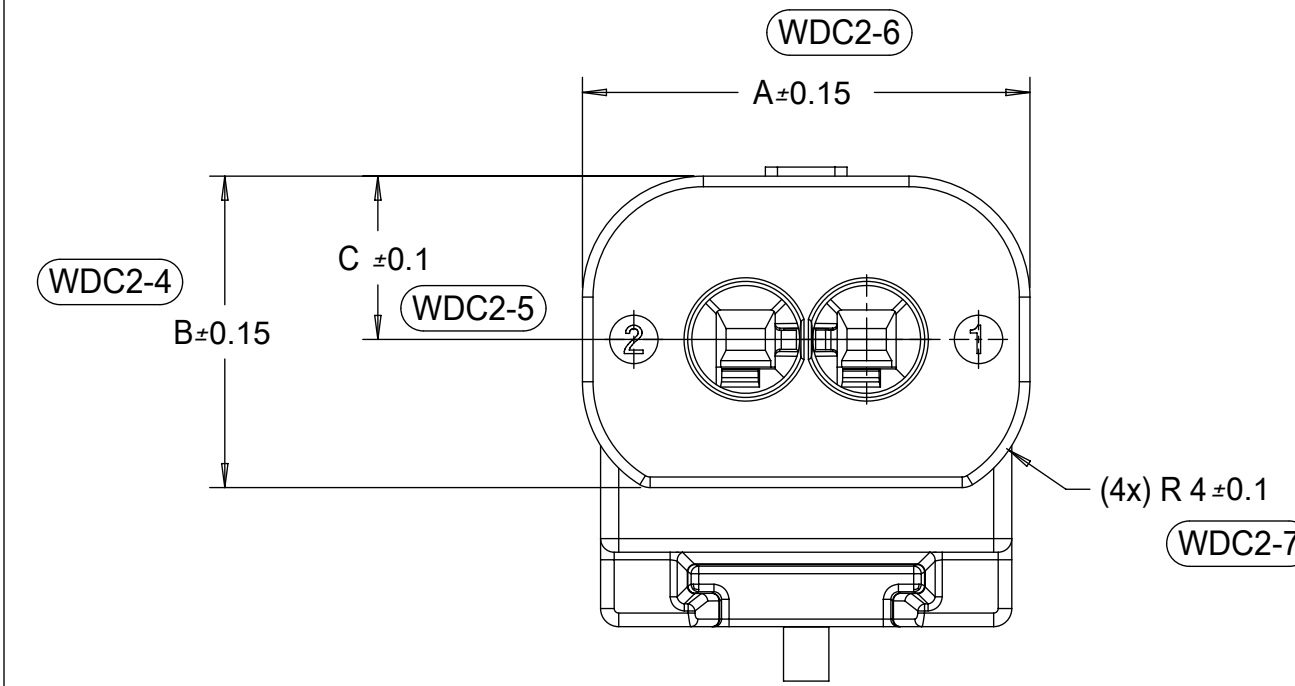


WIRE DRESS COVER
 INTERFACE OPTION 1
 WIRE DRESS COVERS
 NOT AVAILABLE



3 CIRCUIT	18.8	10.8	5.4	15.9	7.9	3.7
2 CIRCUIT	14.8	10.3	5.4	11.9	7.9	3.7
CONFIGURATION	A	B	C	E	F	G

CHARTED DIMENSIONS



WIRE DRESS COVER
 INTERFACE OPTION 2
 BASED ON HIRSCHMANN INTERFACE
 DRAWING 808-012-xxx REV B5

QUALITY SYMBOLS ▽ = 0 ▽ = 0 ▽ = 0 ▽ = 0 ▽ = 0 ▽ = 0 ▽ = 0 ▽ = 0 ▽ = 0	THIS DRAWING CONTAINS INFORMATION THAT IS PROPRIETARY TO MOLEX ELECTRONIC TECHNOLOGIES, LLC AND SHOULD NOT BE USED WITHOUT WRITTEN PERMISSION		DIMENSION UNITS MM	SCALE 4:1			
	GENERAL TOLERANCES (UNLESS SPECIFIED)	DRWN BY SKRAJENDRANA	DATE 2013/11/06	PRODUCT CUSTOMER DRAWING			
	ANGULAR TOL ± 3.0 ° 4 PLACES ± 3 PLACES ± 2 PLACES ± 0.1 1 PLACE ± 0.2 0 PLACES ± 0.5	CHKD BY KDEKOSKI	DATE	SERIES 34899		MATERIAL NUMBER SEE TABLE	CUSTOMER GENERAL MARKET
	DRAFT WHERE APPLICABLE MUST REMAIN WITHIN DIMENSIONS	APPR BY A15	DATE	DOCUMENT NUMBER SD-34899-2001		DOC TYPE PSD	DOC PART SHEET NUMBER 001 7 OF 11

TABLE OF CONTENTS	
SHEET NO.	SHEET DESCRIPTION
1	NOTES
2	1x4 BLADE SEALED ASSEMBLY KEYING CONFIGURATIONS
3	1x6 BLADE SEALED ASSEMBLY KEYING CONFIGURATIONS
4	CLIP SLOT CONFIGURATIONS
5	BLADE SEALED ASSEMBLY
6	CONNECTION SYSTEM PACKAGING
7	WIRE DRESS COVER INTERFACE OPTIONS
8	1x4 BLADE SEALED ASSEMBLY BOH INTERFACE OPTION 1
9	1x4 BLADE SEALED ASSEMBLY BOH INTERFACE OPTION 2
10	1x6 BLADE SEALED ASSEMBLY BOH INTERFACE OPTION 1
11	1x6 BLADE SEALED ASSEMBLY BOH INTERFACE OPTION 2

CONNECTOR HOUSING
PRIMARY LOCK REINFORCEMENT PLUG

1x4 BLADE SEALED ASSEMBLY
1x6 BLADE SEALED ASSEMBLY

NOTES: VALID UNLESS OTHERWISE SPECIFIED

1. GENERAL SPECIFICATION SEE AS-1000-0001
 2. APPLICATION CONTAINS PRODUCT INTRODUCTION, PRODUCT SUMMARY, CONNECTOR ADDITIONAL PACKAGING INFORMATION, CONNECTOR MATING, SIGNALS, ELECTRICAL CONTINUITY, ELECTRICAL AND MECHANICAL TOLERANCES, AND FLAMMABILITY.
 3. PRODUCT SPECIFICATION SEE AS-1000-0001
 4. PACKAGING SPECIFICATION FOR WIRE DRESS DRAWING PK-3100-000
 5. PARTS MUST BE IN COMPLIANCE TO TOXIC CHEMICAL SUBSTANCES FOR PRODUCTS AND PACKAGING SPECIFICATION DEWG-0000-001
 6. DATA POINT BE IDENTIFIED UNDER THE MOLEX PART NUMBER TO PDS SUPPORT SERVICES

2. DESIGN - MATERIALS
 a. SEE BOH TABLE

3. DESIGN - GEOMETRY
 a. THIS IS A MOX CAD GENERATED PART. THE CAD MATHEMATICAL DATA IS THE MASTER FOR THIS PART. FOR DIMENSIONS OR ANY INFORMATION NOT SHOWN ON THE DRAWING, AND THE CAD FILES.
 b. GEOMETRIC DIMENSIONS AND TOLERANCES PER ASME Y14.5 - 1994
 c. EDGES AND UNDESIGNED DETAILS PER GEOMETRIC DIMENSIONS AND TOLERANCES PER ASME Y14.5 - 1994
 d. CORNER SHOW AS SWAMP TO BE R 0.2 MAX
 e. LETTERING SHALL BE 0.15 MAX HEIGHT IN 0.25 MINOR IDENTIFICATION AND CUSTOMER MATERIAL NUMBER

4. LASER MARKING
 1. PART NUMBER
 2. DAY OF THE YEAR
 3. YEAR

REVISION BALLOON NUMBER LOG

REV	DESCRIPTION
B10	UPDATED BALLOONS 2-1 & 2-2 ON SHEET 7
B14	UPDATED PARTS TO SALEABLE
B13	RELEASED PRIMARY KEYS NON-SR SALEABLE
B12	UPDATED WIRE DRESS BY GEOMETRY
B11	UPDATED WIRE DRESS PART # TO TOOLED BUT NOT VALIDATED
B10	UPDATED TOLERANCES WOC FEATURES
B9	1x4, 1x6 PART # WIRE DRESS COVER INTERFACE FEATURES OK TO TOOL
B8	1x4, 1x6 CLIP SLEET OK TO TOOL
B7	1x4 PART # UPDATED TO TOOLED BUT NOT VALIDATED
B6	ADDED 1x4 CLIP SLEET PART NUMBERS
B5	BOH CORRECTIONS AND UPDATES
B4	BOH CORRECTIONS AND UPDATES
B3	1x4, 1x6 NON-SR PARTS OK TO TOOL
B2	1x4, 1x6 CLIP SLEET PART # OK TO TOOL
B1	1x4, 1x6 CLIP SLEET PART NUMBERS ADDED
A	OK TO TOOL

PER DRAWING REVISION B10
 LAST BALLOON NUMBER USED WOC2-10
 ADDED BALLOON NUMBERS WOC2-1 - WOC2-10
 REMOVED BALLOON NUMBERS

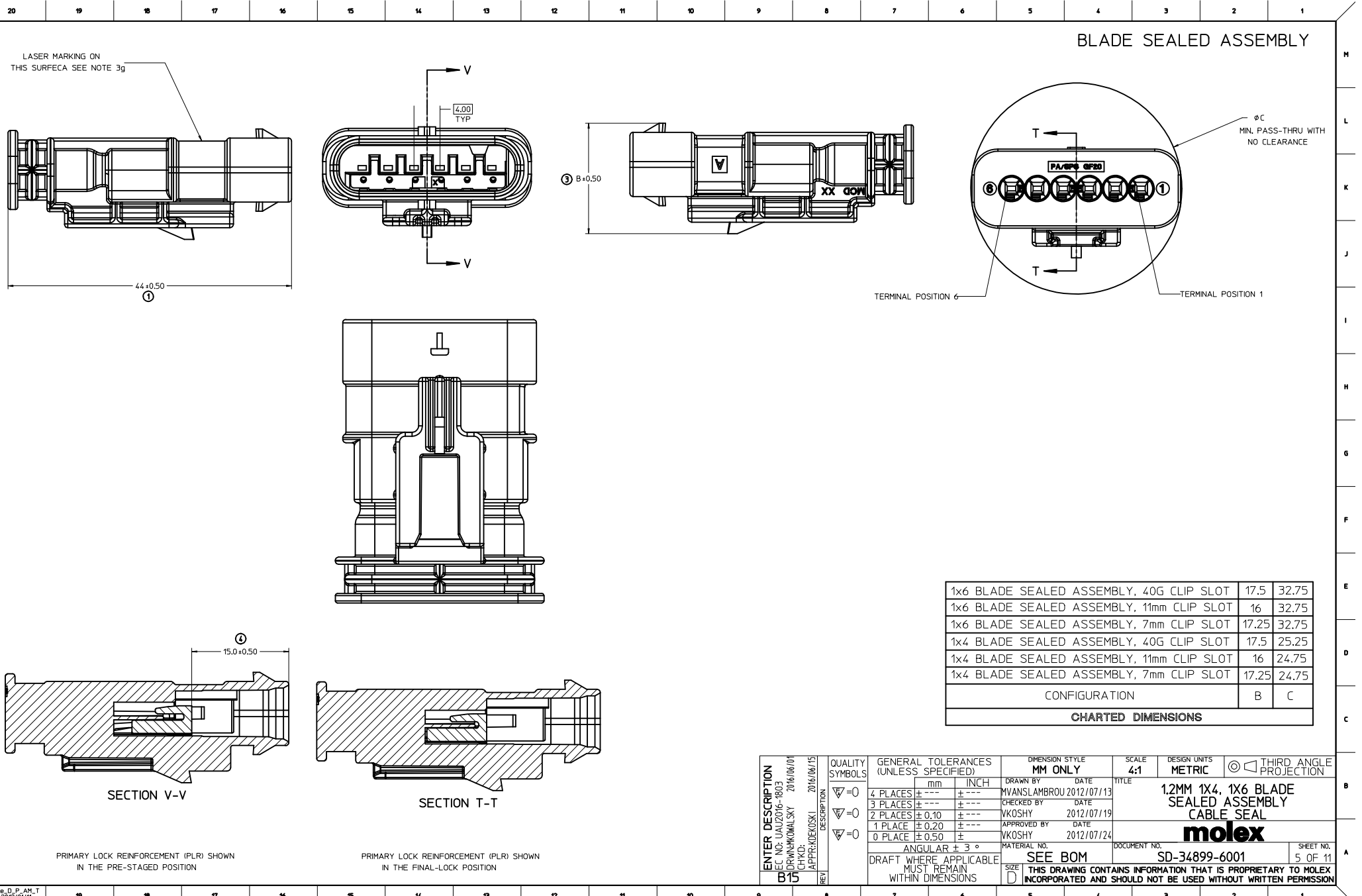
QUALITY	GENERAL TOLERANCES	UNLESS SPECIFIED	UNLESS SPECIFIED	UNLESS SPECIFIED	UNLESS SPECIFIED	UNLESS SPECIFIED	UNLESS SPECIFIED	UNLESS SPECIFIED	UNLESS SPECIFIED
SYMBOLS	INCH	MILL	INCH	MILL	INCH	MILL	INCH	MILL	INCH
□	±0.005	±0.01	±0.005	±0.01	±0.005	±0.01	±0.005	±0.01	±0.005
□	±0.005	±0.01	±0.005	±0.01	±0.005	±0.01	±0.005	±0.01	±0.005
□	±0.005	±0.01	±0.005	±0.01	±0.005	±0.01	±0.005	±0.01	±0.005
□	±0.005	±0.01	±0.005	±0.01	±0.005	±0.01	±0.005	±0.01	±0.005

DATE DESCRIPTION
 2011/07/19 12MM 1x4, 1x6 BLADE SEALED ASSEMBLY
 2011/07/19 1x4, 1x6 BLADE SEALED ASSEMBLY
 2011/07/19 1x4, 1x6 BLADE SEALED ASSEMBLY

SEE BOM

MOLEX
 SD-34899-6001

1 OF 11
 THIS DRAWING CONTAINS INFORMATION THAT IS PROPRIETARY TO MOLEX
 INCORPORATED AND SHOULD NOT BE USED WITHOUT WRITTEN PERMISSION



1x6 BLADE SEALED ASSEMBLY, 40G CLIP SLOT	17.5	32.75
1x6 BLADE SEALED ASSEMBLY, 11mm CLIP SLOT	16	32.75
1x6 BLADE SEALED ASSEMBLY, 7mm CLIP SLOT	17.25	32.75
1x4 BLADE SEALED ASSEMBLY, 40G CLIP SLOT	17.5	25.25
1x4 BLADE SEALED ASSEMBLY, 11mm CLIP SLOT	16	24.75
1x4 BLADE SEALED ASSEMBLY, 7mm CLIP SLOT	17.25	24.75

CONFIGURATION	B	C
CHARTED DIMENSIONS		

QUALITY SYMBOLS	GENERAL TOLERANCES	UNLESS SPECIFIED	UNLESS SPECIFIED	UNLESS SPECIFIED	UNLESS SPECIFIED	UNLESS SPECIFIED	UNLESS SPECIFIED	UNLESS SPECIFIED	UNLESS SPECIFIED
ASSEMBLY	MM ONLY	MM ONLY	MM ONLY	MM ONLY	MM ONLY	MM ONLY	MM ONLY	MM ONLY	MM ONLY
FINISH	INCH	INCH	INCH	INCH	INCH	INCH	INCH	INCH	INCH
DATE	DATE	DATE	DATE	DATE	DATE	DATE	DATE	DATE	DATE
DESIGNED BY	DESIGNED BY	DESIGNED BY	DESIGNED BY	DESIGNED BY	DESIGNED BY	DESIGNED BY	DESIGNED BY	DESIGNED BY	DESIGNED BY
DRAWN BY	DRAWN BY	DRAWN BY	DRAWN BY	DRAWN BY	DRAWN BY	DRAWN BY	DRAWN BY	DRAWN BY	DRAWN BY
CHECKED BY	CHECKED BY	CHECKED BY	CHECKED BY	CHECKED BY	CHECKED BY	CHECKED BY	CHECKED BY	CHECKED BY	CHECKED BY
APPROVED BY	APPROVED BY	APPROVED BY	APPROVED BY	APPROVED BY	APPROVED BY	APPROVED BY	APPROVED BY	APPROVED BY	APPROVED BY
DATE	DATE	DATE	DATE	DATE	DATE	DATE	DATE	DATE	DATE

SEE ROM DOCUMENT NO. SD-34899-6001
 THIS DRAWING CONTAINS INFORMATION THAT IS PROPRIETARY TO MOLEX
 INCORPORATED AND SHOULD NOT BE USED WITHOUT WRITTEN PERMISSION

1x4 BLADE SEALED ASSEMBLY BOM
 FOR WIRE DRESS COVER INTERFACE 2
 REFER WIRE DRESS INTERFACE SHEET
 FOR DETAILS

REV	DESCRIPTION	DATE	BY	CHKD	APPV	STATUS	REASON
1	INITIAL TOOLING BUT NOT VALIDATED						
2	SALEABLE						
3	SALEABLE						
4	SALEABLE						
5	SALEABLE						
6	SALEABLE						
7	SALEABLE						
8	SALEABLE						
9	SALEABLE						
10	SALEABLE						
11	SALEABLE						
12	SALEABLE						
13	SALEABLE						
14	SALEABLE						
15	SALEABLE						
16	SALEABLE						
17	SALEABLE						
18	SALEABLE						
19	SALEABLE						
20	SALEABLE						
21	SALEABLE						
22	SALEABLE						
23	SALEABLE						
24	SALEABLE						
25	SALEABLE						
26	SALEABLE						
27	SALEABLE						
28	SALEABLE						
29	SALEABLE						
30	SALEABLE						
31	SALEABLE						
32	SALEABLE						
33	SALEABLE						
34	SALEABLE						
35	SALEABLE						
36	SALEABLE						
37	SALEABLE						
38	SALEABLE						
39	SALEABLE						
40	SALEABLE						
41	SALEABLE						
42	SALEABLE						
43	SALEABLE						
44	SALEABLE						
45	SALEABLE						
46	SALEABLE						
47	SALEABLE						
48	SALEABLE						
49	SALEABLE						
50	SALEABLE						
51	SALEABLE						
52	SALEABLE						
53	SALEABLE						
54	SALEABLE						
55	SALEABLE						
56	SALEABLE						
57	SALEABLE						
58	SALEABLE						
59	SALEABLE						
60	SALEABLE						
61	SALEABLE						
62	SALEABLE						
63	SALEABLE						
64	SALEABLE						
65	SALEABLE						
66	SALEABLE						
67	SALEABLE						
68	SALEABLE						
69	SALEABLE						
70	SALEABLE						
71	SALEABLE						
72	SALEABLE						
73	SALEABLE						
74	SALEABLE						
75	SALEABLE						
76	SALEABLE						
77	SALEABLE						
78	SALEABLE						
79	SALEABLE						
80	SALEABLE						
81	SALEABLE						
82	SALEABLE						
83	SALEABLE						
84	SALEABLE						
85	SALEABLE						
86	SALEABLE						
87	SALEABLE						
88	SALEABLE						
89	SALEABLE						
90	SALEABLE						
91	SALEABLE						
92	SALEABLE						
93	SALEABLE						
94	SALEABLE						
95	SALEABLE						
96	SALEABLE						
97	SALEABLE						
98	SALEABLE						
99	SALEABLE						
100	SALEABLE						

ASSEMBLY DESCRIPTION	ASSEMBLY PART NUMBER	PRODUCTION TOOL STATUS	COMMENTS
1x4 BLADE SEALED ASSEMBLY BOM	SD-34899-6001		
CONNECTOR HOUSING KEYING OPTION A	SD-34899-6001		
CONNECTOR HOUSING KEYING OPTION B	SD-34899-6001		
CONNECTOR HOUSING KEYING OPTION C	SD-34899-6001		
CONNECTOR HOUSING KEYING OPTION D	SD-34899-6001		
CONNECTOR HOUSING KEYING OPTION E	SD-34899-6001		
CONNECTOR HOUSING KEYING OPTION F	SD-34899-6001		
CONNECTOR HOUSING KEYING OPTION G	SD-34899-6001		
PLR	PLR		

ABBREVIATION	COMPONENT
A	CONNECTOR HOUSING KEYING OPTION A
B	CONNECTOR HOUSING KEYING OPTION B
C	CONNECTOR HOUSING KEYING OPTION C
D	CONNECTOR HOUSING KEYING OPTION D
E	CONNECTOR HOUSING KEYING OPTION E
F	CONNECTOR HOUSING KEYING OPTION F
G	CONNECTOR HOUSING KEYING OPTION G
PLR	PLR

QUALITY SYMBOL	GENERAL TOLERANCES UNLESS SPECIFIED	THICKNESS	SCALE	PROJ. ANGLE
100	MM ONLY	MM ONLY	1:1	30°
101	INCH	INCH	1:1	30°
102	DATE	DATE	1:1	30°
103	DATE	DATE	1:1	30°
104	DATE	DATE	1:1	30°
105	DATE	DATE	1:1	30°
106	DATE	DATE	1:1	30°
107	DATE	DATE	1:1	30°
108	DATE	DATE	1:1	30°
109	DATE	DATE	1:1	30°
110	DATE	DATE	1:1	30°
111	DATE	DATE	1:1	30°
112	DATE	DATE	1:1	30°
113	DATE	DATE	1:1	30°
114	DATE	DATE	1:1	30°
115	DATE	DATE	1:1	30°
116	DATE	DATE	1:1	30°
117	DATE	DATE	1:1	30°
118	DATE	DATE	1:1	30°
119	DATE	DATE	1:1	30°
120	DATE	DATE	1:1	30°
121	DATE	DATE	1:1	30°
122	DATE	DATE	1:1	30°
123	DATE	DATE	1:1	30°
124	DATE	DATE	1:1	30°
125	DATE	DATE	1:1	30°
126	DATE	DATE	1:1	30°
127	DATE	DATE	1:1	30°
128	DATE	DATE	1:1	30°
129	DATE	DATE	1:1	30°
130	DATE	DATE	1:1	30°
131	DATE	DATE	1:1	30°
132	DATE	DATE	1:1	30°
133	DATE	DATE	1:1	30°
134	DATE	DATE	1:1	30°
135	DATE	DATE	1:1	30°
136	DATE	DATE	1:1	30°
137	DATE	DATE	1:1	30°
138	DATE	DATE	1:1	30°
139	DATE	DATE	1:1	30°
140	DATE	DATE	1:1	30°
141	DATE	DATE	1:1	30°
142	DATE	DATE	1:1	30°
143	DATE	DATE	1:1	30°
144	DATE	DATE	1:1	30°
145	DATE	DATE	1:1	30°
146	DATE	DATE	1:1	30°
147	DATE	DATE	1:1	30°
148	DATE	DATE	1:1	30°
149	DATE	DATE	1:1	30°
150	DATE	DATE	1:1	30°

SEE BOM
 THIS DRAWING CONTAINS INFORMATION THAT IS PROPRIETARY TO MOLEX
 INCORPORATED AND SHOULD NOT BE USED WITHOUT WRITTEN PERMISSION

SD-34899-6001

30 OF 11

1x6 BLADE SEALED ASSEMBLY BOM
FOR WIRE DRESS COVER INTERFACE 2
REFER WIRE DRESS INTERFACE SHEET
FOR DETAILS

KEYING OPTION	DESCRIPTION	QTY	UNIT	STATUS	COMMENTS
KEYING OPTION D	7mm CLIP SLOT STONE GRAY	3299-0093			
KEYING OPTION C	7mm CLIP SLOT DARK GRAY	3299-0092			
KEYING OPTION E	7mm CLIP SLOT LIGHT GRAY	3299-0091			
KEYING OPTION A	7mm CLIP SLOT BLACK	3299-0090			
KEYING OPTION D	7mm CLIP SLOT YELLOW	3299-0100			
KEYING OPTION E	7mm CLIP SLOT YELLOW	3299-0101			
KEYING OPTION B	7mm CLIP SLOT YELLOW	3299-0102			
KEYING OPTION A	7mm CLIP SLOT YELLOW	3299-0103			
KEYING OPTION D	7mm CLIP SLOT STONE GRAY	3299-0110			
KEYING OPTION C	7mm CLIP SLOT DARK GRAY	3299-0099			
KEYING OPTION E	7mm CLIP SLOT LIGHT GRAY	3299-0098			
KEYING OPTION A	7mm CLIP SLOT BLACK	3299-0097			
KEYING OPTION D	7mm CLIP SLOT YELLOW	3299-0096			
KEYING OPTION E	7mm CLIP SLOT YELLOW	3299-0095			
KEYING OPTION B	7mm CLIP SLOT YELLOW	3299-0094			
KEYING OPTION A	7mm CLIP SLOT YELLOW	3299-0093			
ASSEMBLY PART NUMBER					

PLR	NATURAL	SPS/NON QP/D
WE CONNECTOR HOUSING KEYING OPTION D 7mm CLIP SLOT STONE GRAY		
WE CONNECTOR HOUSING KEYING OPTION C 7mm CLIP SLOT DARK GRAY		
WE CONNECTOR HOUSING KEYING OPTION E 7mm CLIP SLOT LIGHT GRAY		
WE CONNECTOR HOUSING KEYING OPTION A 7mm CLIP SLOT BLACK		
WE CONNECTOR HOUSING KEYING OPTION D 7mm CLIP SLOT YELLOW		
WE CONNECTOR HOUSING KEYING OPTION E 7mm CLIP SLOT YELLOW		
WE CONNECTOR HOUSING KEYING OPTION B 7mm CLIP SLOT YELLOW		
WE CONNECTOR HOUSING KEYING OPTION A 7mm CLIP SLOT YELLOW		
WE CONNECTOR HOUSING KEYING OPTION D 7mm CLIP SLOT STONE GRAY		
WE CONNECTOR HOUSING KEYING OPTION C 7mm CLIP SLOT DARK GRAY		
WE CONNECTOR HOUSING KEYING OPTION E 7mm CLIP SLOT LIGHT GRAY		
WE CONNECTOR HOUSING KEYING OPTION A 7mm CLIP SLOT BLACK		
WE CONNECTOR HOUSING KEYING OPTION D 7mm CLIP SLOT YELLOW		
WE CONNECTOR HOUSING KEYING OPTION E 7mm CLIP SLOT YELLOW		
WE CONNECTOR HOUSING KEYING OPTION B 7mm CLIP SLOT YELLOW		
WE CONNECTOR HOUSING KEYING OPTION A 7mm CLIP SLOT YELLOW		

DESCRIPTION COLOR MATERIAL

ABREVIATION	COMPONENT
A	CONNECTOR HOUSING KEYING OPTION A
B	CONNECTOR HOUSING KEYING OPTION B
C	CONNECTOR HOUSING KEYING OPTION C
D	CONNECTOR HOUSING KEYING OPTION D
PLR	PLR

QUALITY SYMBOL	GENERAL TOLERANCES	UNLESS SPECIFIED	UNLESS SPECIFIED	UNLESS SPECIFIED	UNLESS SPECIFIED	UNLESS SPECIFIED	UNLESS SPECIFIED	UNLESS SPECIFIED	UNLESS SPECIFIED
ASSEMBLY PART NUMBER	MM ONLY	MM ONLY	MM ONLY	MM ONLY	MM ONLY	MM ONLY	MM ONLY	MM ONLY	MM ONLY
DATE	DATE	DATE	DATE	DATE	DATE	DATE	DATE	DATE	DATE
DESIGNED BY	DESIGNED BY	DESIGNED BY	DESIGNED BY	DESIGNED BY	DESIGNED BY	DESIGNED BY	DESIGNED BY	DESIGNED BY	DESIGNED BY
DATE	DATE	DATE	DATE	DATE	DATE	DATE	DATE	DATE	DATE
APPROVED BY	APPROVED BY	APPROVED BY	APPROVED BY	APPROVED BY	APPROVED BY	APPROVED BY	APPROVED BY	APPROVED BY	APPROVED BY
DATE	DATE	DATE	DATE	DATE	DATE	DATE	DATE	DATE	DATE

12MM 1X4 1X6 BLADE SEALED ASSEMBLY CABLE SEAL
SD-34899-6001
11 OF 11

THIS DRAWING CONTAINS INFORMATION THAT IS PROPRIETARY TO MOLEX INCORPORATED AND SHOULD NOT BE USED WITHOUT WRITTEN PERMISSION

X-ON Electronics

Largest Supplier of Electrical and Electronic Components

Click to view similar products for [Automotive Connectors](#) category:

Click to view products by [Molex](#) manufacturer:

Other Similar products are found below :

[003-018-000](#) [600858](#) [60403001](#) [60993906-B](#) [60993913-B](#) [629515004020001](#) [M902-2131](#) [M902-2161](#) [M902-2344](#) [72.330.1035.1](#)
[73.353.4028.0](#) [F118010](#) [F119300-B](#) [F132210](#) [F132210-B](#) [F166900](#) [F180100](#) [F258300](#) [F258300-B](#) [F294300-B](#) [F339100](#) [F339700](#) [F358300-](#)
[B](#) [F374110](#) [F407400](#) [F412210](#) [F427600](#) [F444110](#) [F487000](#) [F495100-B](#) [F500900-B](#) [F509500B-B](#) [770444-1](#) [776880-1](#) [827153-1](#) [881735-1](#)
[8N1515-32-24P](#) [9-1326727-8](#) [9-1326729-8](#) [925467-1](#) [925474-1](#) [928905-1](#) [936398-2](#) [964562-1](#) [964562-4](#) [964731-2](#) [965051-1](#) [968782-1](#)
[GT17SA-8DS-HU](#) [GT17VS-10DP-5.2CF](#)