

POWER DISCRETES
Description

Quick reference data

$$V_R = 50 - 600V$$

$$I_F = 4.5A$$

$$t_{rr} = 150 - 400nS$$

$$I_R = 1.0\mu A$$

Features

- ◆ Very low reverse recovery time
- ◆ Hermetically sealed non-cavity construction.
- ◆ Low switching losses
- ◆ Low forward voltage drop
- ◆ Soft, non-snap off, recovery characteristics
- ◆ Capable of withstanding temperature cycle conditions from -180°C to +130°C for space critical programs.

These products are qualified to MIL-PRF-19500/411. They can be supplied fully released as JAN, JANTX, JANTXV and JANS versions.

Absolute Maximum Ratings

Electrical specifications @ $T_A = 25^\circ C$ unless otherwise specified.

	Symbol	1N5415 3SF05	1N5416 3SF1	1N5417 3SF2	1N5418 3SF4	1N5419 3SF5	1N5420 3SF6	Units
Working Reverse Voltage	V_{RWM}	50	100	200	400	500	600	V
Repetitive Reverse Voltage	V_{RRM}	50	100	200	400	500	600	V
Average Forward Current @ 55°C in free air, lead length 0.375"	$I_{F(AV)}$	4.5						A
Repetitive Surge Current @ 55°C in free air, lead length 0.375"	I_{FRM}	25						A
Non-Repetitive Surge Current ($t_p = 8.3mS$ @ V_R & T_{JMAX}) ($t_p = 8.3mS$, @ V_R & 25°C)	I_{FSM}	80 150						A
Storage Temperature Range	T_{STG}	-65 to +175						°C

POWER DISCRETES

Electrical Specifications

	Symbol	1N5415 3SF05	1N5416 3SF1	1N5417 3SF2	1N5418 3SF4	1N5419 3SF5	1N5420 3SF6	Units
Average Forward Current max. for sine wave, $T_A = 55^\circ\text{C}$	$I_{F(AV)}$	3.0						A
Average Forward Current max. ($T_L = 55^\circ\text{C}$; $L = 3/8"$) for sine wave	$I_{F(AV)}$	4.4						A
for square wave	$I_{F(AV)}$	4.5						A
Pt for fusing ($t = 8.3\text{mS}$) max	Pt	90						A ² S
Forward Voltage Drop max. @ $I_F = 3.0\text{A}$, $T_j = 25^\circ\text{C}$	V_F	1.1						V
Reverse Current max. @ V_{RWM} , $T_j = 25^\circ\text{C}$ @ V_{RWM} , $T_j = 100^\circ\text{C}$	I_R I_R	1.0 20						μA
Reverse Recovery Time max. 0.5A I_F to 1.0A I_{RM} recovers to 0.25A $I_{RM(REC)}$	trr	150	150	150	150	250	400	nS
Junction Capacitance typ. @ $V_R = 4\text{V}$, $f = 1\text{MHz}$	Cj	550	430	250	165	140	120	pF

Thermal Characteristics

	Symbol	1N5415 3SF05	1N5416 3SF1	1N5417 3SF2	1N5418 3SF4	1N5419 3SF5	1N5420 3SF6	Units
Thermal Resistance-Junction to Lead Lead length = 0.375"	$R_{\theta JL}$	20						$^\circ\text{C/W}$
Lead length = 0.0"	$R_{\theta JL}$	4						$^\circ\text{C/W}$
Thermal Resistance-Junction to Ambient on 0.06" thick pcb. 1 oz. copper	$R_{\theta JA}$	75						$^\circ\text{C/W}$

Application Note

These diodes are capable of withstanding 20 cycles of Temperature Cycling from -180°C to $+130^\circ\text{C}$ for for Space Critical Programs. Semtech is also able to offer this test condition as a 100% Screening Option. A full Summary Data Report is available on request. Please consult the factory for details.

POWER DISCRETES

Typical Characteristics

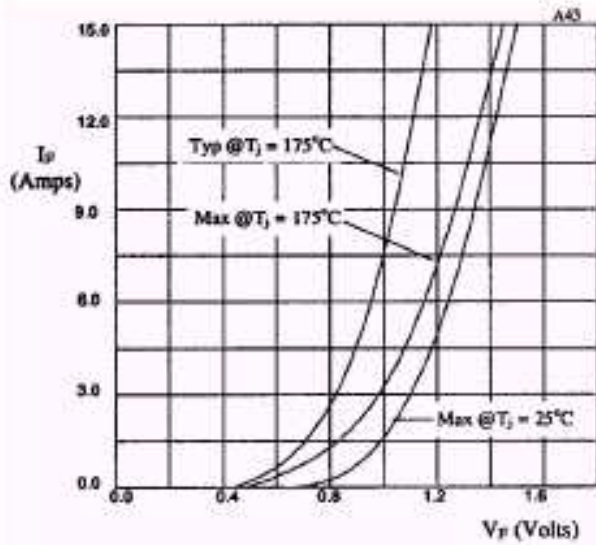


Fig 1. Forward voltage drop as a function of forward current.

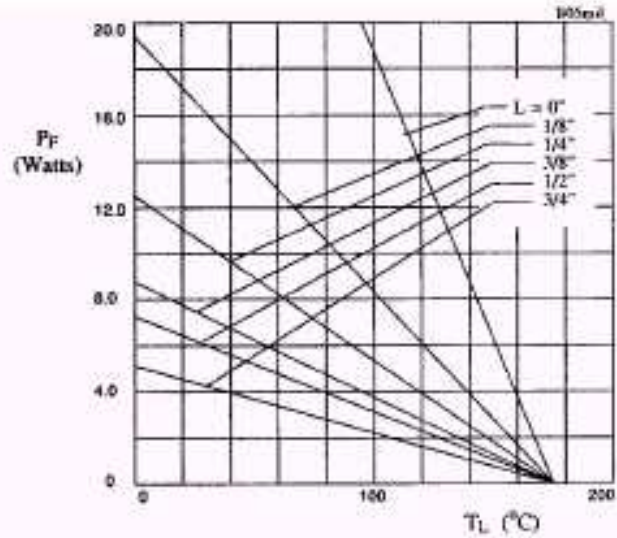


Fig 2. Maximum power versus lead temperature.

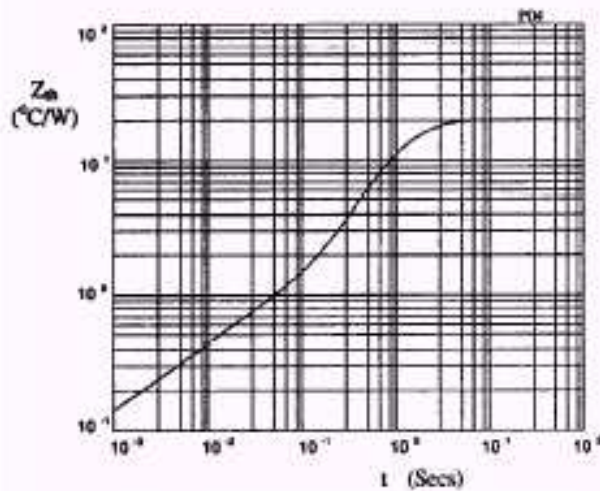


Fig 3. Transient thermal impedance characteristic.

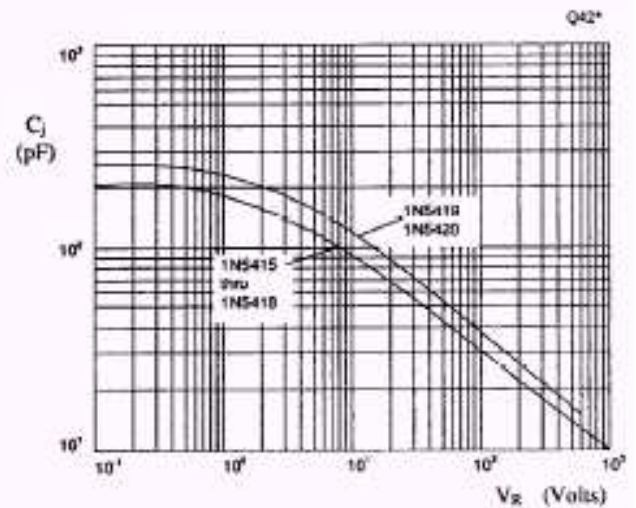


Fig 4. Typical junction capacitance as a function of reverse voltage.

POWER DISCRETES
Typical Characteristics

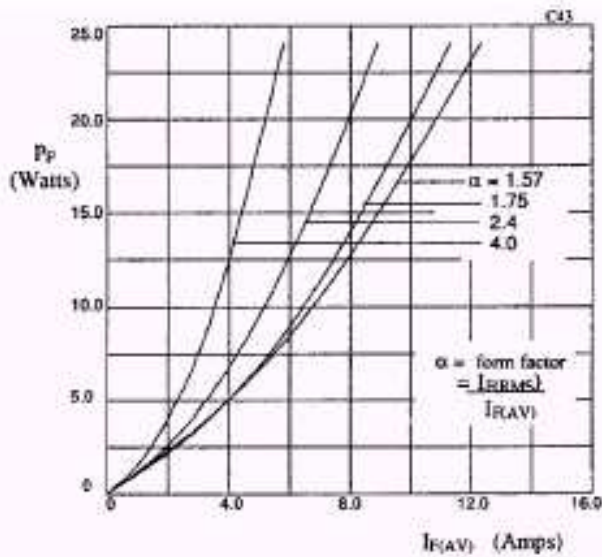


Fig 5. Forward power dissipation as a function of forward current, for sinusoidal operation.

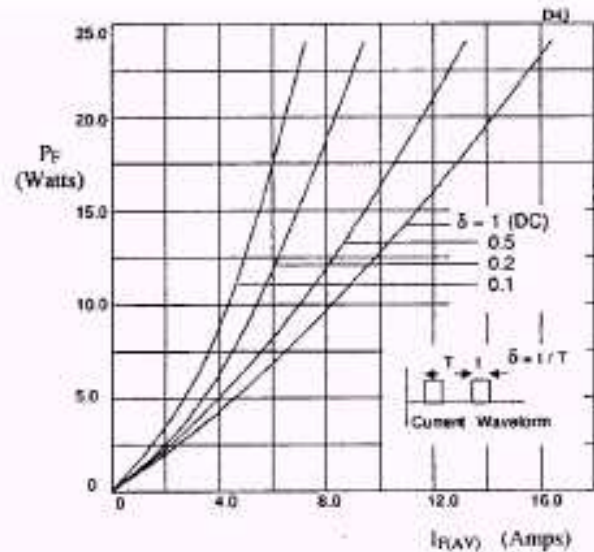


Fig 6. Forward power dissipation as a function of forward current, for square wave operation.

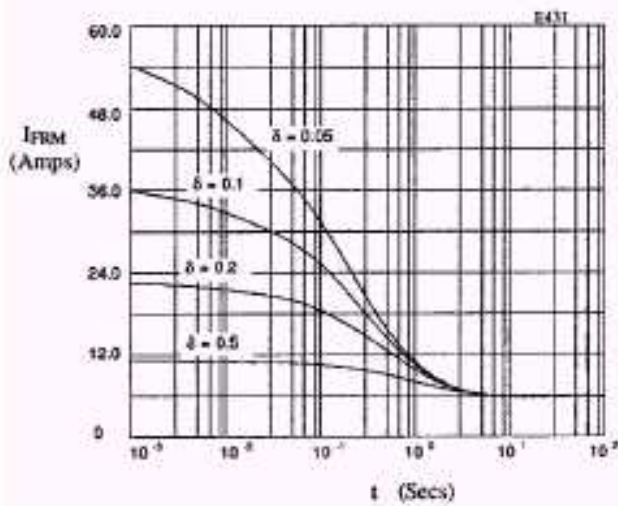


Fig 7. Typical repetitive forward current as a function of pulse width at 55°C; $R_{thL} = 20 \text{ }^\circ\text{C/W}$; V_{RWM} during $1 - \delta$.

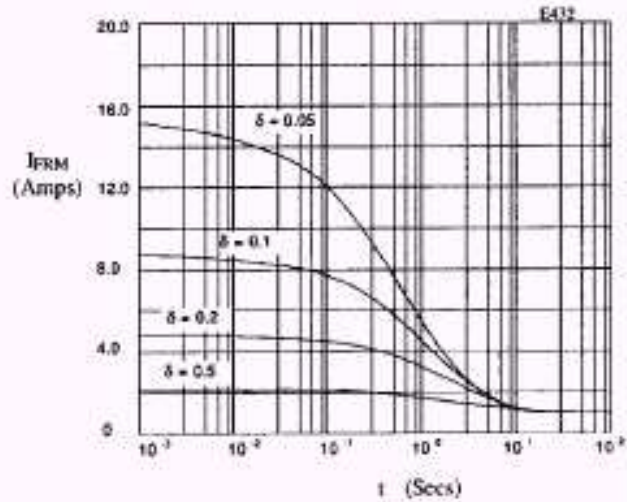


Fig 8. Typical repetitive forward current as a function of pulse width at 100°C; $R_{thL} = 80 \text{ }^\circ\text{C/W}$; V_{RWM} during $1 - \delta$.

POWER DISCRETES

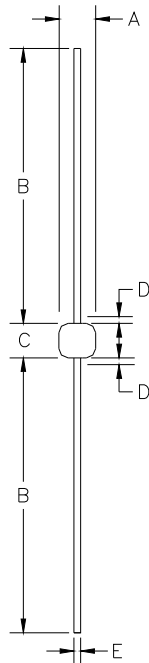
Ordering Information

Part Number	Description
1N5415	Axial leaded hermetically sealed ⁽¹⁾
1N5416	
1N5417	
1N5418	
1N5419	
1N5420	
3SF05	
3SF1	
3SF2	
3SF4	
3SF5	
3SF6	

Note:

(1) Available in bulk and tape and reel packaging. Please consult factory for quantities.

Outline Drawing



G4

DIM ^N	Dimensions				Note
	Inches		Millimeters		
	MIN	MAX	MIN	MAX	
A	0.135	0.18	3.43	4.57	-
B	0.9	1.3	22.9	33.0	-
C	0.13	0.17	3.3	4.32	-
D	-	0.05	-	1.27	1
E	0.036	0.042	0.91	1.07	-

Note:

(1) Lead diameter uncontrolled over this region.

Weight = 0.04oz

Contact Information

Semtech Corporation
Power Discretes Products Division
200 Flynn Road, Camarillo, CA 93012
Phone: (805)498-2111 FAX (805)498-3804

X-ON Electronics

Largest Supplier of Electrical and Electronic Components

Click to view similar products for [ESD Suppressors / TVS Diodes](#) category:

Click to view products by [Semtech](#) manufacturer:

Other Similar products are found below :

[NTE4902](#) [P4SMAJ15A](#) [P4SMAJ26A](#) [SMAJ400CA-TP](#) [TGL34-47CA](#) [ESDAULC45-1BF4](#) [SM1605E3/TR13](#) [SMF20A-TP](#) [P4SMAJ12A](#)
[CPDUR24V-HF](#) [CPDQC5V0USP-HF](#) [CPDQC5V0-HF](#) [MPLAD30KP45CAE3](#) [MMBZ27VCLQ-7-F](#) [MMAD1108/TR13](#) [MPLAD30KP24A](#)
[ACPDQC5V0R-HF](#) [DFLT170A-7](#) [NTE4900](#) [NTE4926](#) [NTE4938](#) [SMF22A-TP](#) [SMF12A-TP](#) [SLVU2.8-TP](#) [SMLJ6.5CA-TP](#) [SMAJ6.5CA-TP](#)
[MMAD1108E3/TR13](#) [D5V0M1U2LP3-7](#) [SMAJ400A-TP](#) [AOZ8811DT-03](#) [AOZ8831DI-05](#) [AOZ8831DT-03](#) [SMAJ188CA](#) [3SMC33CA](#)
[BK](#) [CPDQC3V3C-HF](#) [CPDQC12VE-HF](#) [MPLAD30KP170CA](#) [82357120100](#) [5.0SMLJ15CA-TP](#) [5KP18A-TP](#) [P6KE8.2A-TP](#)
[MPLAD30KP43CAE3](#) [SMAJ43A-TP](#) [D5V0F6U8LP33-7](#) [TVS5501V10MUT5G](#) [5.0SMLJ24CA-TP](#) [SMAJ110CA-TP](#) [MPLAD15KP75CAE3](#)
[MMAD1103e3/TR13](#) [DFLT40AQ-7](#)