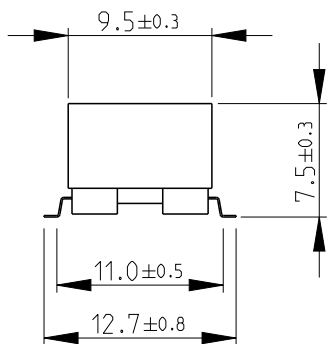
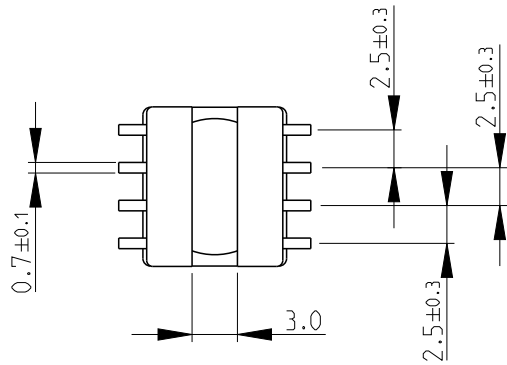
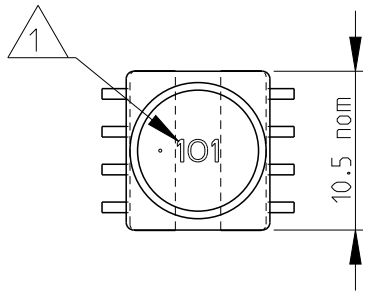
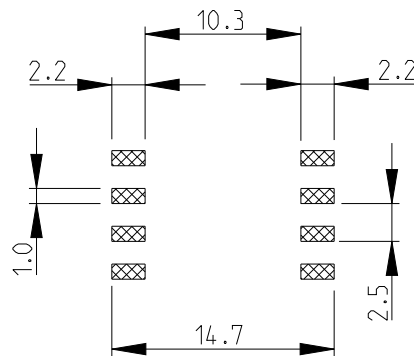


LOC	DIST	REVISIONS					
E	B	P	LTR	DESCRIPTION	DATE	DWN	APVD
		BA2	ECR-13-015529		04OCT2013	KR	TN

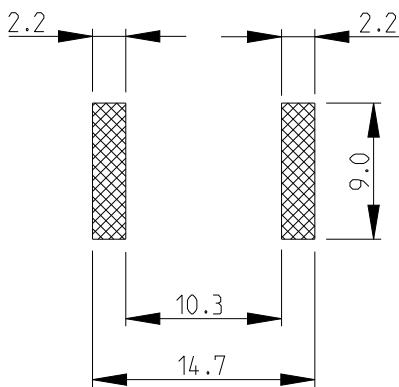


RECOMMENDED LAND PATTERN FOR INDUCTANCE VALUES 100 μH OR HIGHER



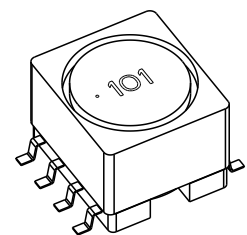
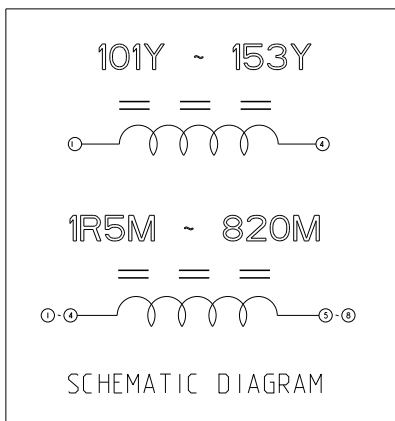
RoHS Compliant

RECOMMENDED LAND PATTERN FOR INDUCTANCE VALUES 1.5 μH - 82 μH



1 INDUCTANCE CODE

2 FOR FURTHER INFORMATION SEE DATA SHEET FOR 3632 SERIES-SHIELDED SMD POWER INDUCTORS




2008

RELEASED FOR PUBLICATION

ALL RIGHTS RESERVED.

THIS DRAWING IS UNPUBLISHED.

BY -  
© COPYRIGHT 2008

DIMENSIONS: mm	DWN	SUBHASH.M	03-Sep-08	MATERIAL	-	FINISH	-					
	CHK	PRAKASH.S	03-Sep-08	 TE Connectivity								
TOLERANCES UNLESS OTHERWISE SPECIFIED:	APVD	STEPHEN.P	03-Sep-08					NAME	SHIELDED SMD POWER INDUCTOR SERIES 3632B			
	0 PLC ± 0.2	PRODUCT SPEC	-	SIZE	A 4	CAGE CODE	00779	DRAWING NO	© = 1625813	RESTRICTED TO	-	
1 PLC ± 0.1	APPLICATION SPEC	-	WEIGHT	-	SCALE			2:1	SHEET	1 OF 1	REV	BA2
2 PLC ±	Customer Drawing											
3 PLC ±												
4 PLC ±												
ANGLES ± 5°												

## X-ON Electronics

Largest Supplier of Electrical and Electronic Components

*Click to view similar products for [Fixed Inductors](#) category:*

*Click to view products by [TE Connectivity](#) manufacturer:*

Other Similar products are found below :

[MLZ1608M6R8WTD25](#) [MLZ1608N6R8LT000](#) [MLZ1608N3R3LTD25](#) [MLZ1608N3R3LT000](#) [MLZ1608N150LT000](#)

[MLZ1608M150WTD25](#) [MLZ1608M3R3WTD25](#) [MLZ1608M3R3WT000](#) [MLZ1608M150WT000](#) [MLZ1608A1R5WT000](#)

[MLZ1608N1R5LT000](#) [B82432C1333K000](#) [PCMB053T-1R0MS](#) [PCMB053T-1R5MS](#) [PCMB104T-1R5MS](#) [CR32NP-100KC](#) [CR32NP-](#)

[151KC](#) [CR32NP-180KC](#) [CR32NP-181KC](#) [CR32NP-1R5MC](#) [CR32NP-390KC](#) [CR32NP-3R9MC](#) [CR32NP-680KC](#) [CR32NP-820KC](#)

[CR32NP-8R2MC](#) [CR43NP-390KC](#) [CR43NP-560KC](#) [CR43NP-680KC](#) [CR54NP-181KC](#) [CR54NP-470LC](#) [CR54NP-820KC](#) [CR54NP-8R5MC](#)

[MGDQ4-00004-P](#) [MGDU1-00016-P](#) [MHL1ECTTP18NJ](#) [MHL1JCTTD12NJ](#) [PE-51506NL](#) [PE-53601NL](#) [PE-53630NL](#) [PE-53824SNLT](#) [PE-](#)

[62892NL](#) [PE-92100NL](#) [PG0434.801NLT](#) [PG0936.113NLT](#) [PM06-2N7](#) [PM06-39NJ](#) [HC2LP-R47-R](#) [HC2-R47-R](#) [HC3-2R2-R](#) [HC8-1R2-R](#)