

Microminiature Pushbutton Switches ESD proof



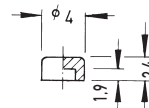
Specifications:

Contact rating:	max. 28 V DC, 0.4 VA min. 20 mV DC, 1 μ A
Contact resistance:	< 100 m Ω
Insulation resistance:	> 500 M Ω at 250 V DC
Dielectric strength:	250 V, 50 Hz for the duration of 1 minute
Operating temperature:	-40 °C to +85 °C
Mechanical life:	minimum 30 000 operations
Contacts:	phosphor bronze, gold-plated
Terminals:	PC terminals, crimped, phosphor bronze gold-plated
Material:	case and button: PES, meets UL 94 V-0, washable
Mounting:	on pc-board
Soldering conditions:	wave-soldering – max.: 7 sec, 250 °C \pm 5 °C max.: 5 sec, 270 °C \pm 5 °C
ESD resistance:	> 8 kV (between button and terminals)

Accessories:

Plastic caps

black	KF 4105
grey	KF 4107
red	KF 4109
white	KF 4110



Models:

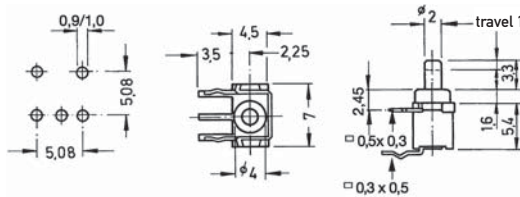
Switching functions: when looking at the brand name, the normally closed contact is on the right hand side.

washable

SPDT

FP 1 F – RA

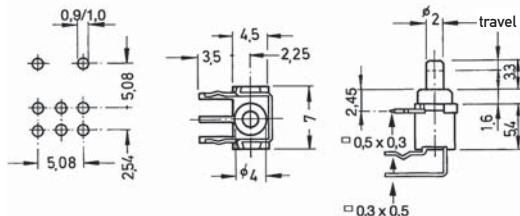
mom – on



DPDT

FP 2 F – RA

mom – on





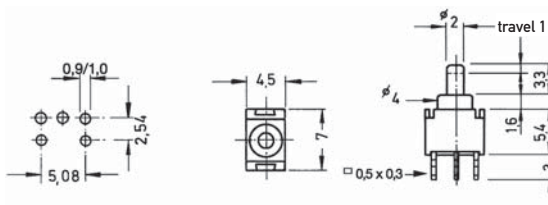
Microminiature Pushbutton Switches ESD proof

Models: Switching functions: when looking at the brand name, the normally closed contact is on the left hand side.

washable

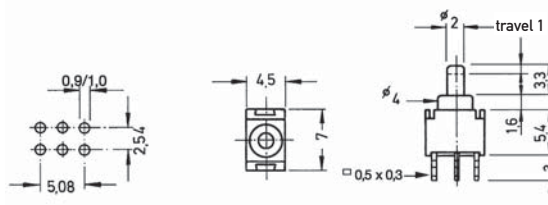
SPDT
FP 1F

on - mom



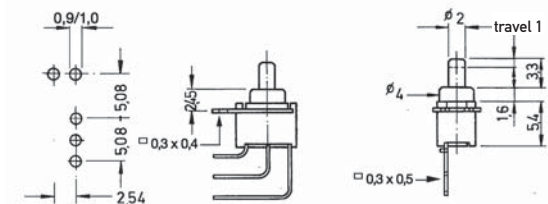
DPDT
FP 2F

on - mom



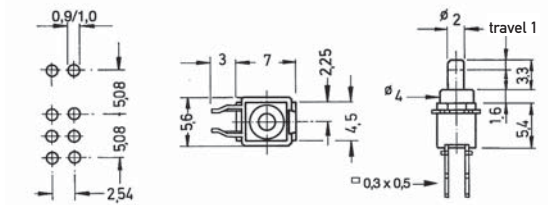
SPDT
FP 1F-VM

on - mom



DPDT
FP 2F-VM

on - mom



3

X-ON Electronics

Largest Supplier of Electrical and Electronic Components

Click to view similar products for [Switch Hardware](#) category:

Click to view products by [Knitter-Switch](#) manufacturer:

Other Similar products are found below :

[893102000](#) [LZZ1A](#) [0098.9234](#) [61-9707.7](#) [61-9771.0](#) [M2PA-5011](#) [635401](#) [6PA104](#) [6PA113](#) [6PA147-E6](#) [6PA148-E6](#) [6PA32](#) [6PA9](#) [700106](#)
[700109](#) [700201A56](#) [700303A56](#) [700701264](#) [700C1GRY](#) [700C2GRN](#) [704-6001](#) [704.960.4](#) [704.960.9](#) [704.965.1](#) [704.965.2](#) [704.965.6](#)
[704.966.0](#) [7089-3](#) [71M1048](#) [757200264](#) [778000A56](#) [79215938](#) [MHU35](#) [MHU37](#) [825.003.011](#) [825.005.011](#) [825.053.011](#) [825.055.011](#)
[826.000.071](#) [827.020.011](#) [827.400.021](#) [835.900.023](#) [MML52C10C](#) [MML52E10C](#) [MML72EEK](#) [MML92HGH](#) [MML93K](#) [84211M02CNNS](#)
[84211M02LGRS](#) [84211M02LNNX3](#)