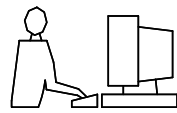


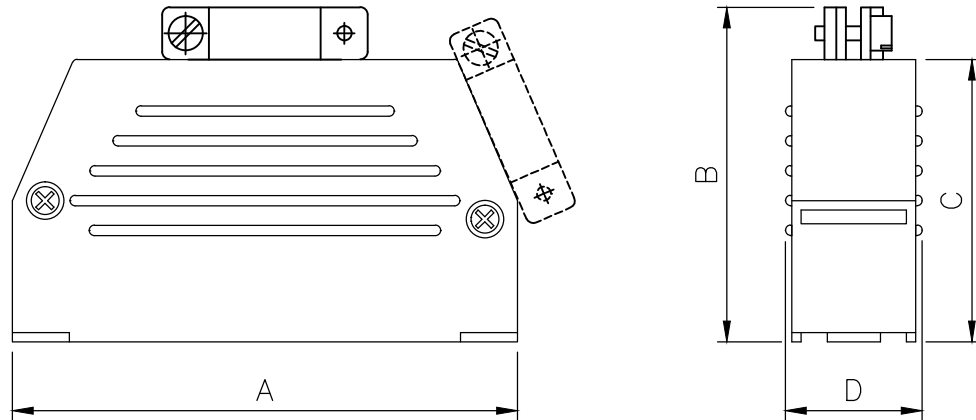
THIS IS A C.A.D. GENERATED DRAWING
DO NOT MAKE MANUAL REVISIONS TO MASTER.



* UNLESS OTHERWISE SPECIFIED TOLERANCES
ON DECIMAL IS:
UNIT: MM

BACKSHELL KIT INCLUDES:

- (2) BACKSHELL HALVES
- (2) CLAMP SCREWS
- (2) SHELL SCREWS
- (1) SLIDE LOCK KITS
- (2) SCREWS



DIMENSIONS(MM/IN)				
SIZE	A±0.4	B±0.4	C±0.4	D±0.8
9	32.2	28.6	22.1	15.0
15	39.8	34.1	26.1	15.0
25	54.2	38.3	30.3	15.0
37	70.7	46.2	38.2	15.0

Ordering information: Hood with Slide-Lock

SIZE	P/N-KITTED	Product Code
9-way	2801-0101-01	MHED-DS09S-K
15-way	2801-0101-02	MHED-DS15S-K
25-way	2801-0101-03	MHED-DS25S-K
37-way	2801-0101-04	MHED-DS37S-K

BACKSHELL MATERIAL: FLAME RETARDANT THERMOPLASTIC
SCREWS: STEEL, ZINC PLATED
SLIDE LOCK: STEEL, ZINC PLATED

THESE DRAWINGS AND SPECIFICATIONS ARE THE PROPERTY OF MH CONNECTORS LTD. AND SHALL NOT BE REPRODUCED, COPIED OR USED AS THE BASIS FOR THE MANUFACTURE OR SALE OF APPARATUS WITHOUT WRITTEN PERMISSION.

DRAWN Haley	DATE 07-29-14
----------------	------------------

APPROVED	DATE
----------	------

SCALE NTS	SHEET OF 1 OF 1	REV: 2.0
--------------	--------------------	-------------

DRAWING No MHED-DSXXX



THIS SERIES FULLY CONFORMS TO THE EUROPEAN UNION DIRECTIVES 2002/95/EC AND 2002/96/EC FOR RoHS COMPLIANCY.



MH CONNECTORS LTD.

X-ON Electronics

Largest Supplier of Electrical and Electronic Components

Click to view similar products for [D-Sub Standard Connectors](#) category:

Click to view products by [MH Connectors](#) manufacturer:

Other Similar products are found below :

[DCM37S732N](#) [DAM15P500](#) [DEV09S364GTLF](#) [DEM09P032N](#) [DDM50P732N](#) [DAM15S332N](#) [173109-2218](#) [173109-2466](#) [173109-2436](#)
[173109-2435](#) [56F706-005-LI](#) [56F711-015](#) [015-0341-000](#) [015-0372-008](#) [015-8544-011](#) [017041-0005](#) [020419-0104](#) [012-0515-000](#) [012-9507-](#)
[034](#) [012-9507-114](#) [012-9534-001](#) [020745-0008](#) [609-25P](#) [M24308/2-23Z](#) [M243082310F](#) [M243082410F](#) [M243082411F](#) [M24308/4-21](#)
[CT1A18-11PSA206](#) [CT1N36-5SC](#) [CT2-16S-17PS](#) [CT2-20-15PCAU](#) [CT2-24-12PS](#) [CT2-24-28PSF127A206](#) [CT2-32-9PC](#) [CT6F9767-14-4-](#)
[14S-5PC](#) [CT6FA10SL-4PS](#) [CT7-18-10SC](#) [CT7-18-10SCAU](#) [CT7-18-12SCAU](#) [CT7-18-1PC](#) [CT7-18-1PCAU](#) [CT7-18-21SCAU](#) [M83513/01-](#)
[FC](#) [M83723/76W24619 L/C](#) [M85049/48-3-2F](#) [69001-865](#) [6STD09PCM99B70X](#) [6STD09SCM99B30X](#) [6STD09SCT99S40X](#)