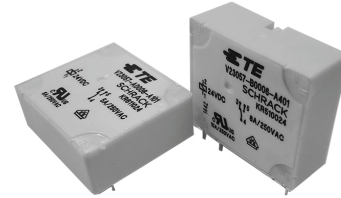


**Power PCB Relay Card E**

- 1 pole 8A, 1 form C (CO) or 1 form A (NO) contact
- 4kV coil-contact
- Vertical and horizontal version
- Wash tight
- RoHS compliant (Directive 2011/65/EC)



Typical applications  
I/O modules, heating control, timers



**Approvals**

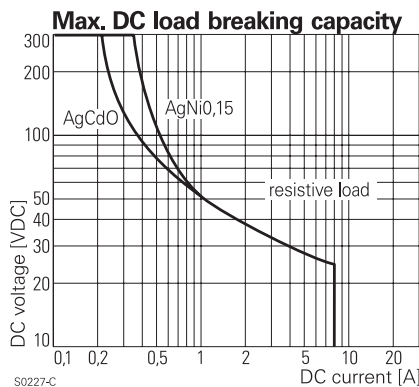
VDE Cert. No. 5146, UL E214025  
Technical data of approved types on request

| Contact Data   | 8A                             | 5A                | bifurcated            |
|--|--------------------------------|-------------------|-----------------------|
| Contact arrangement                                  | 1 form C (CO) or 1 form A (NO) |                   |                       |
| Rated voltage  | 250VAC                         |                   |                       |
| Max. switching voltage                               | 400VAC                         |                   |                       |
| Rated current  | 8A                             | 5A                | 5A                    |
| Limiting making current,<br>max 4 s, duty factor 10% | 15A                            | -                 | -                     |
| Breaking capacity max.                               | 2000VA                         | 1250VA            | 1250VA                |
| Contact material                                     | AgCdO,<br>AgNi20               | AgNi0.15          | AgNi0.15              |
| Contact style  | single<br>contact              | single<br>contact | bifurcated<br>contact |
| Frequency of operation, with/without load            | 360/72000h <sup>-1</sup>       |                   |                       |
| Operate/release time typ.                            | 7/3ms                          |                   |                       |
| Bounce time typ., form A/form B                      | 0.5/3ms                        |                   |                       |

**Contact ratings**

| Type            | Contact | Load                        | Cycles             |
|-----------------|---------|-----------------------------|--------------------|
| <b>IEC61810</b> |         |                             |                    |
| AgCdO           | C (CO)  | 8A, 250VAC, resistive, 70°C | 20x10 <sup>3</sup> |
| AgNi20          | C (CO)  | 8A, 250VAC, resistive 70°C  | 20x10 <sup>3</sup> |
| AgCdO           | A (NO)  | 8A, 250VAC, resistive, 70°C | 20x10 <sup>3</sup> |
| AgNi20          | A (NO)  | 8A, 250VAC, resistive, 70°C | 30x10 <sup>3</sup> |
| AgNi0.15        | A (NO)  | 5A, 250VAC, resistive, 70°C | 20x10 <sup>3</sup> |

Mechanical endurance >20x10<sup>6</sup> operations



**Coil Data**

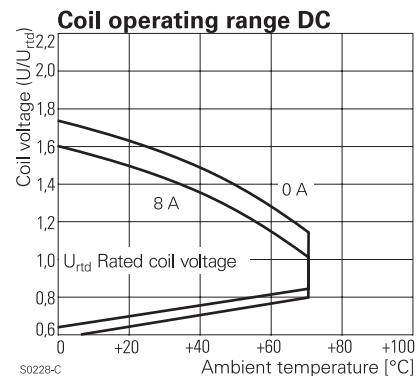
Coil voltage range 6 to 110VDC

**Coil versions, DC coil**

| Coil code | Rated voltage VDC | Operate voltage VDC | Release voltage VDC | Coil resistance $\Omega \pm 15\%^{1)}$ | Rated coil power mW |
|-----------|-------------------|---------------------|---------------------|--|---------------------|
| 001       | 6                 | 4.2                 | 0.6                 | 80 <sup>1)</sup>                       | 450                 |
| 002       | 12                | 8.3                 | 1.2                 | 330 <sup>1)</sup>                      | 436                 |
| 006       | 24                | 16.8                | 2.4                 | 1200                                   | 480                 |
| 013       | 48                | 33.6                | 4.8                 | 4700                                   | 490                 |
| 023       | 60                | 42.0                | 6.0                 | 7200                                   | 500                 |
| 028       | 110               | 77.0                | 11.0                | 23400                                  | 517                 |

1) Coil resistance  $\pm 10\%$ .

All figures are given for coil without pre-energization, at ambient temperature +23°C.



Other coil voltages on request.

**Insulation Data**

|                                    |                      |
|------------------------------------|----------------------|
| Initial dielectric strength        |                      |
| between open contacts              | 1000V <sub>rms</sub> |
| between contact and coil           | 4000V <sub>rms</sub> |
| Clearance/creepage                 |                      |
| between contact and coil           | $\geq 4/4$ mm        |
| Material group of insulation parts | IIIa                 |
| Tracking index of relay base       | PTI225V              |

**Power PCB Relay Card E (Continued)**

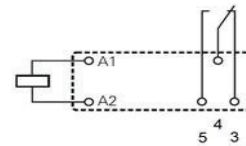
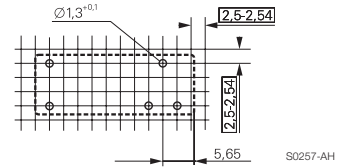
**Other Data**

|   |                            |
|---|----------------------------|
| Material compliance: EU RoHS/ELV, China RoHS, REACH, Halogen content refer to the Product Compliance Support Center at <a href="http://www.te.com/customersupport/rohssupportcenter">www.te.com/customersupport/rohssupportcenter</a> |                            |
| Ambient temperature   | -40 to +70°C               |
| Category of environmental protection  | RTIII - wash tight         |
| IEC 61810   |                            |
| Terminal type   | PCB-THT                    |
| Mounting distance   | 5mm                        |
| Weight  | 14g                        |
| Resistance to soldering heat THT  |                            |
| IEC 60068-2-20  | 260°C/5s                   |
| Packaging/unit  | tube/20 pcs., box/400 pcs. |

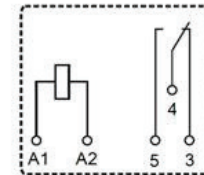
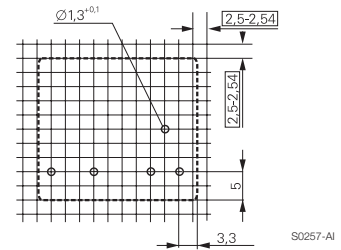
**PCB layout / terminal assignment**

Bottom view on solder pins

Vertical version

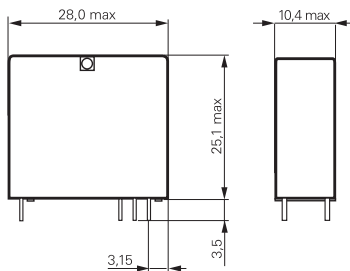


Horizontal version



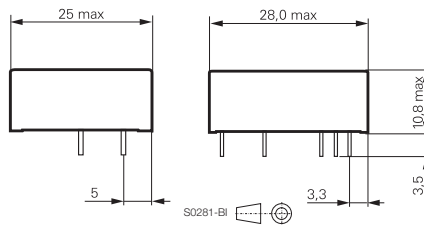
**Dimensions**

Vertical version



S0280-AH

Horizontal version



S0281-BI

**Power PCB Relay Card E** (Continued)

|                               |                      |  |           |          |            |           |          |           |
|-------------------------------|----------------------|--|-----------|----------|------------|-----------|----------|-----------|
| <b>Product code structure</b> | Typical product code | <b>V23057</b>  | <b>-A</b> | <b>0</b> | <b>006</b> | <b>-A</b> | <b>1</b> | <b>01</b> |
| <b>Type</b>                   |                      | <b>V23057</b> Power PCB Relay Card E                                   |           |          |            |           |          |           |
| <b>Version</b>                |                      | <b>A</b> Horizontal<br><b>B</b> Vertical                               |           |          |            |           |          |           |
| <b>Version</b>                |                      | <b>0</b> Standard (nature white)                                       |           |          |            |           |          |           |
| <b>Coil</b>                   |                      | Coil code: please refer to coil versions table                         |           |          |            |           |          |           |
| <b>Contact set</b>            |                      | <b>A</b> Single contact  |           |          |            |           |          |           |
| <b>Contact material</b>       |                      | <b>1</b> AgNi 0.15<br><b>2</b> AgNi 20<br><b>4</b> AgCdO               |           |          |            |           |          |           |
| <b>Contact configuration</b>  |                      | <b>01</b> 1 form C contact (1 CO)<br><b>02</b> 1 form A contact (1 NO) |           |          |            |           |          |           |

| Product code      | Version    | Contact arrangement   | Contact material      | Coil                  | Part Number |
|-------------------|------------|-----------------------|-----------------------|-----------------------|-------------|
| V23057-A0002-A101 | Horizontal | 1 form C (CO) contact | AgNi 0.15             | 12VDC                 | 1393215-4   |
| V23057-A0002-A401 |            |                       | AgCdO                 |                       | 1393215-9   |
| V23057-A0006-A101 |            |                       | AgNi 0.15             | 24VDC                 | 2-1393215-1 |
| V23057-A0006-A201 |            |                       | AgNi 20               |                       | 2-1393215-3 |
| V23057-A0006-A401 |            |                       | AgCdO                 |                       | 2-1393215-5 |
| V23057-B0001-A101 | Vertical   | 1 form C (CO) contact | AgNi 0.15             | 6VDC                  | 6-1393215-6 |
| V23057-B0002-A101 |            |                       | 12VDC                 | 6-1393215-7           |             |
| V23057-B0002-A201 |            |                       |                       | AgNi 20               | 6-1393215-9 |
| V23057-B0002-A401 |            |                       | AgCdO                 | 7-1393215-1           |             |
| V23057-B0006-A101 |            |                       | 24VDC                 | AgNi 0.15             | 7-1393215-5 |
| V23057-B0006-A102 |            |                       |                       | 1 form A (NO) contact | 7-1393215-9 |
| V23057-B0006-A201 |            |                       |                       | 1 form C (CO) contact | 8-1393215-1 |
| V23057-B0006-A401 |            |                       |                       | AgCdO                 | 8-1393215-5 |
| V23057-B0006-A402 |            |                       | 1 form A (NO) contact | 8-1393215-6           |             |
| V23057-B0023-A201 |            |                       | 1 form C (CO) contact | AgNi 20               | 60VDC       |

This list represents the most common types and does not show all variants covered by this data sheet.  
Other types on request

## X-ON Electronics

Largest Supplier of Electrical and Electronic Components

*Click to view similar products for te connectivity manufacturer:*

Other Similar products are found below :

[570416-000](#) [CLTEQ-M81CE-SSRELAY-4-20V](#) [4-1633138-8](#) [D38999/24FJ4AN](#) [4-1195131-0](#) [650069-000](#) [SMD100-2](#) [2EDL4CM](#)  
[DTS20W19-11PD-3028](#) [DTS20W19-11PD-3028-LC](#) [DTS20W19-32SD-3028-LC](#) [DTS20W19-32SD-3028](#) [NC6-P104-06](#) [TXR64AB90-](#)  
[3616AI](#) [DTS26F21-41HE](#) [DTS26F21-41AE](#) [DTS26F21-41PE-LC](#) [DTS26F21-11SE-3028-LC](#) [D38999/24WF32JE](#) [D38999/24WF32SE-LC](#)  
[DTS24W19-32HE](#) [D38999/20JB35HA](#) [D38999/24WJ20PA](#) [164-8033-08](#) [D38999/24FF32JE](#) [D38999/24FF32SE-LC](#) [D38999/24WF32JB](#)  
[D38999/24WG11HA](#) [D38999/24WG11HN](#) [MS27467T21F11H](#) [DJT16E21-11HA](#) [DTS24F19-32HE](#) [DTS20W19-32SA-3028-LC](#) [DTS24F19-](#)  
[11SC-3028-LC](#) [DTS24F19-11SC-3028](#) [DJT14E13-98HB](#) [D38999/20WC8BB](#) [1-330599-5](#) [DTS24F21-41HN-LC](#) [DTS24F21-41HN](#)  
[DTS24F21-41AN](#) [DTS24F21-39HN](#) [DTS24F21-41PN-LC](#) [AFD50-10-6SN-1A-LC](#) [DJT10F17-26HC](#) [DTS24W19-32HB](#) [ACT20JE99HA](#)  
[DJT10E17-26HC](#) [DJT10E17-26HN](#) [DJT10F17-26HA](#)