

MICRO SWITCH

A DIVISION OF MINNEAPOLIS-HONEYWELL REGULATOR COMPANY
PHENIX, MASSACHUSETTS

FED. MFR. CODE 91929

SWITCH - BASIC

CATALOG LISTING

3HS61

(M) 3HS61
ISSUE 3

3HS61

PAGE 1 OF 1

M

RELEASE NO.

DRAWING NUMBER

ISSUE
9
8

CHECK

6 MAY 81

CHECK

6 MAY 81

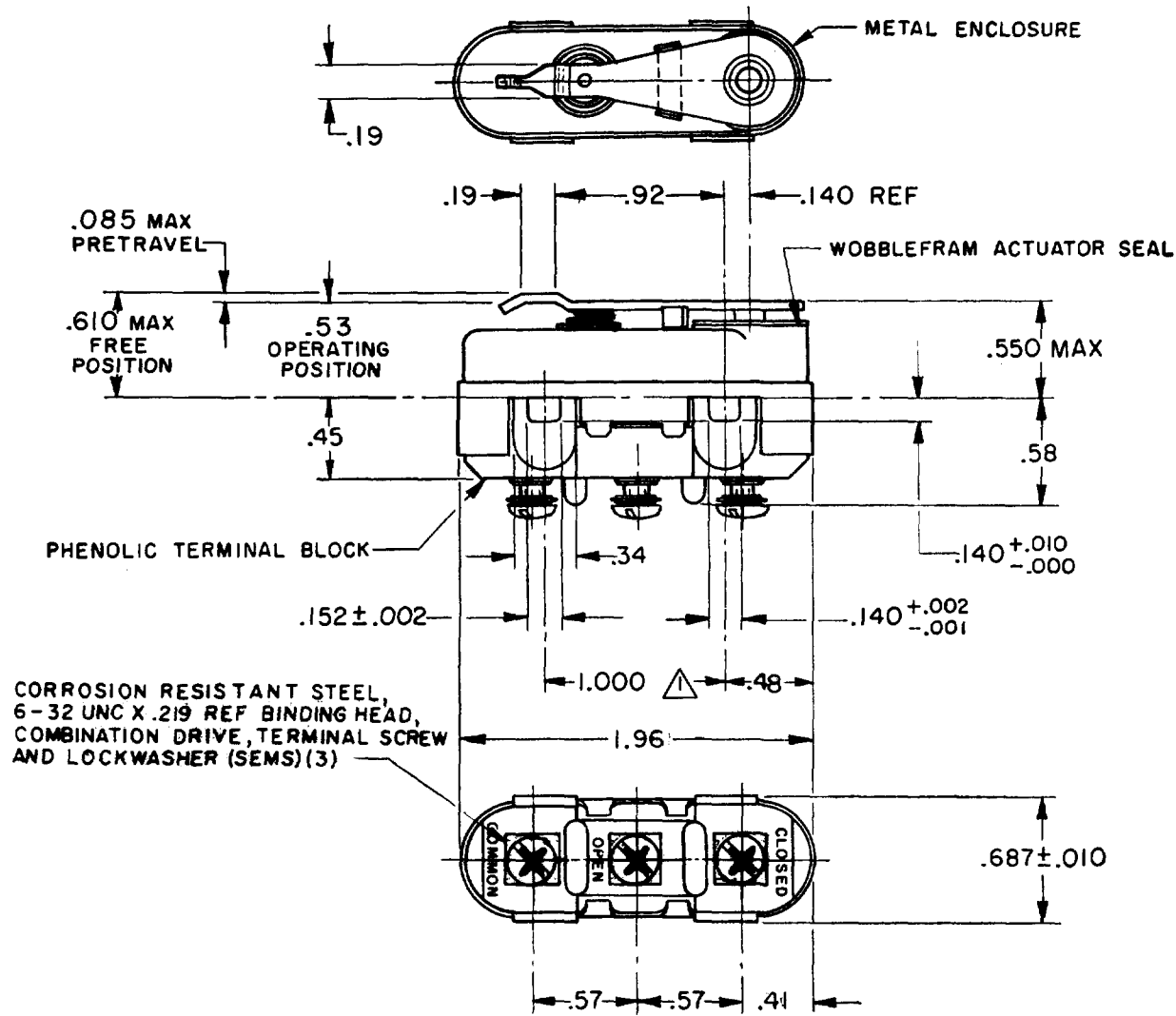
CHECK

61 APR 81

REVISIONS

A	CO 15761	L M H	24 APR 81
B	CO 55162N	TSK	17 JAN 85
C	CO 61043	BBS	16 SEP 88
D	CO 72580	DAW	20 AUG 92
E	CO 76375	WFS	2 SEP 93
F	CO-94122	TSM	12 MAR 99

FO-50378
FORMTEK



- NOTE -
- 1 - MOUNTING HOLES WILL ACCEPT PINS OR SCREWS OF .139 MAX DIA ON 1.000 ± .002 CENTERS
 - 2 - TRAVEL CHARACTERISTICS ARE REFERENCED FROM THE UPPER SURFACE OF THE MOUNTING HOLES WITH THIS CONSTRUCTION
 - 3 - FOR USE IN AMBIENT TEMPERATURE RANGE FROM MINUS 65° F TO PLUS 250° F

THIS DRAWING COVERS A PROPRIETARY ITEM AND IS THE PROPERTY OF MICRO SWITCH, A DIVISION OF MINNEAPOLIS-HONEYWELL REGULATOR CO. THIS DRAWING IS NOT TO BE COPIED OR USED WITHOUT THE APPROVAL OF MICRO SWITCH.

CHARACTERISTICS	ELECTRICAL DATA				SCALE FULL
OPERATING FORCE ----- 28-56 OZ	CONTACT ARRANGEMENT S P D T				DO NOT SCALE PRINT
RELEASE FORCE ----- 8 OZ MIN	LINE VOLTAGE	INDUCTIVE LOAD	RESISTIVE LOAD	MOTOR LOAD	UNLESS OTHERWISE SPECIFIED DIMENSIONS ARE IN INCHES
DIFFERENTIAL TRAVEL ----- .020 MAX	28 VDC	5 AMP	10 AMP	4 AMP	TOLERANCES ARE:
OVERTRAVEL ----- .010 MIN	(SEA LEVEL - 100,000 FT)				ONE PLACE (.0) ±.030
	125 VAC	1 AMP	.5 AMP		TWO PLACE (.00) ±.018
	(SEA LEVEL - 70,000 FT)				THREE PLACE (.000) ±.005
					ANGLES ±
					WEIGHT 1.6 OZ MAX

X-ON Electronics

Largest Supplier of Electrical and Electronic Components

Click to view similar products for [Basic / Snap Action Switches](#) category:

Click to view products by [Honeywell](#) manufacturer:

Other Similar products are found below :

[83228001](#) [01.098.1358.1](#) [602EN1-6B](#) [602EN532](#) [602EN535-RB](#) [602HE5-RB1](#) [604HE162](#) [604HE223-6B](#) [624HE17-RB](#) [6HM89](#) [6PA78-JM](#)
[6SE1](#) [6SX1-H58](#) [70500840](#) [MBD5B1](#) [MBH2731](#) [73-316-0012](#) [79211759](#) [79211923](#) [79218589](#) [7AS12](#) [ML-1155](#) [ML-1376](#) [831010C3.0](#)
[831060C3.TL](#) [831090C2.EL](#) [83131904](#) [84212012](#) [8AS239](#) [8HM73-3](#) [903VB1-PG](#) [914CE1-6G](#) [PL-100](#) [11SM1077-H4](#) [11SM1077-H58](#)
[11SM1-TN107](#) [11SM405](#) [11SM703-T](#) [11SM8423-H2](#) [11SX37-T](#) [11SX48-H58](#) [11SX55-H58](#) [11SM2442-T](#) [11SM76-T](#) [11SM77-H58](#)
[11SM77-T](#) [11SM863-T](#) [11SM866](#) [11SX47-H58](#) [A7CN-1M-1-LEFT](#)