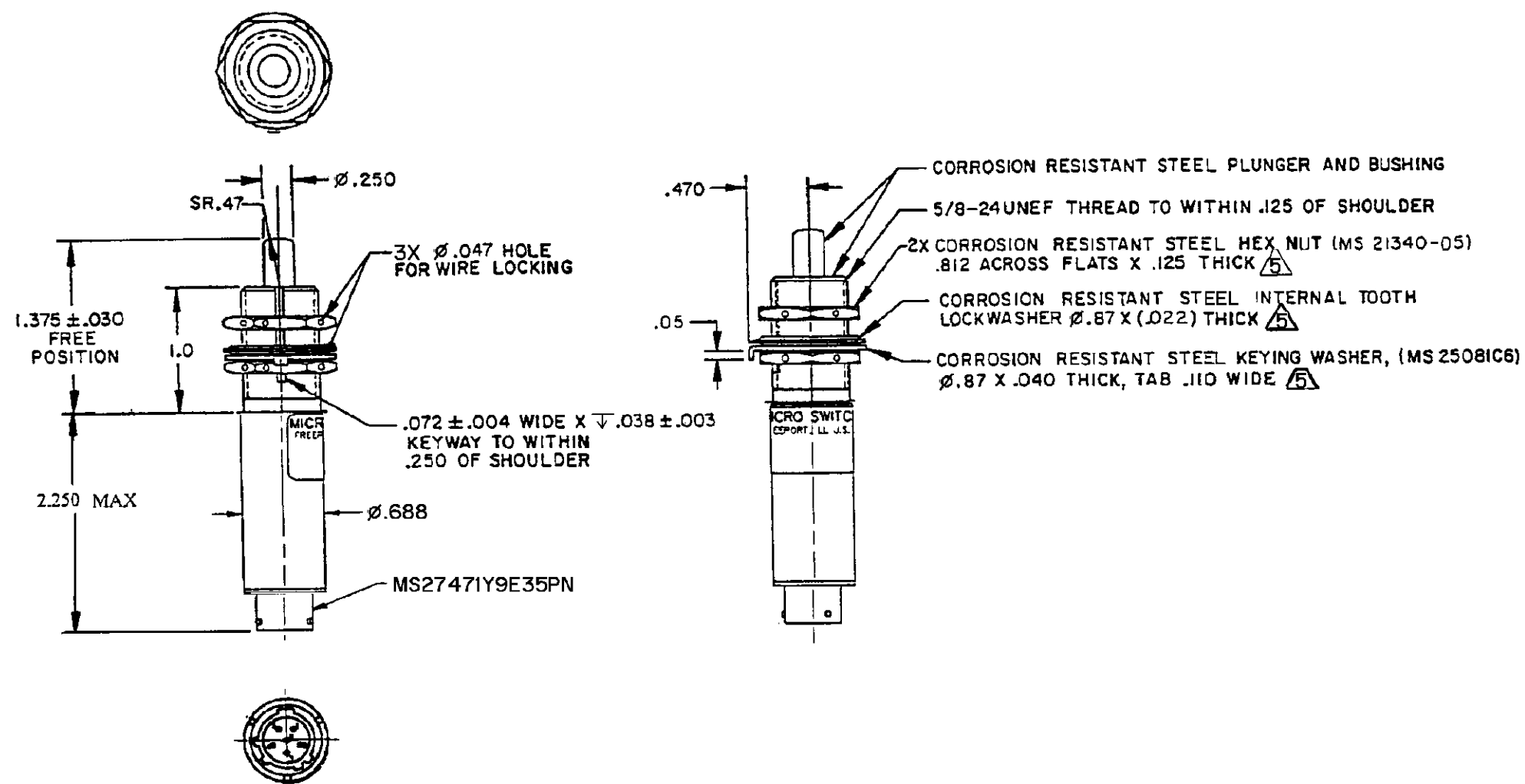


SPECIFICATION DETAILS:

STANDARD:	CONFORMS TO MS21321-1 (MIL-PRF-8805/39), EXCEPT AS NOTED		
CONSTRUCTION:			
ENCLOSURE DESIGN	RESILIENT SEAL PER MIL-PRF-8805, SYMBOL 4		
CONTACT MATERIAL & CONFIGURATION	SMOOTH GOLD CONTACTS		
CIRCUIT CONFIGURATION	2 SPDT		
TERMINATION	CONNECTOR PER MS27471Y9E35PN		
WEIGHT	.20 LB MAX		
EXPOSED METALS	CORROSION RESISTANT STAINLESS STEEL		
O-RING MATERIAL	FLUOROSILICONE ELASTOMER		
ELECTRICAL CHARACTERISTICS:			
ELECTRICAL RATINGS	VOLTAGE	RESISTIVE	LOAD INDUCTIVE
-SEA LEVEL	28 VDC	1	.5
-50,000 FEET	28 VDC	1	.5
DIELECTRIC STRENGTH & INSULATION RESISTANCE		DIELECTRIC STRENGTH ≈ 60 Hz. FOR 5 SECONDS)	INSULATION RESISTANCE (500 VDC ± 10%)
-BETWEEN TERMINALS AND EXPOSED NON-CURRENT CARRYING METAL		1000 V Rms, 500μA (MAX. LEAKAGE)	1000 Megohms MIN
-BETWEEN TERMINALS OF MUTUALLY INSULATED CIRCUITS		1000 V Rms, 500μA (MAX. LEAKAGE)	1000 Megohms MIN
-BETWEEN ALL UNCONNECTED TERMINALS OF THE SAME POLE		1000 V Rms, 500μA (MAX. LEAKAGE)	1000 Megohms MIN
SWITCH RESISTANCE	△2		
RECOMMENDATION OR USE IN APPLICATIONS LESS THAN .5 amps AND/OR 12 volts	YES △6		
MECHANICAL CHARACTERISTICS:			
CHARACTERISTICS:			
OPERATING FORCE	6-12 LBS		
FULL OVERTRAVEL FORCE	30 LB MAX		
RELEASE FORCE	4 LB MIN		
PRETRAVEL	.040 MAX		
DIFFERENTIAL TRAVEL	.020 MAX		
OVERTRAVEL	.250 MIN		
COINCIDENCE OF OPERATING & RELEASE POINTS	.010 OF PLUNGER TRAVEL		
MOUNTING STRENGTH	15 IN-LBS		
ACTUATOR STRENGTH	30 LBS APPLIED IN A DIRECTION TO CAUSE SWITCH ACTUATION		
LIFE:			
MECHANICAL LIFE	25,000 MIN PER MIL-PRF-8805/40 △3		
ELECTRICAL LIFE AT FULL RATED LOAD	25,000 MIN PER MIL-PRF-8805/40 △3		
ENVIRONMENTAL:			
TEMPERATURE RANGE	-55 C TO +85 C		
ALTITUDE RANGE	SEA LEVEL TO 50,000 FEET		
SHOCK	PER MIL-PRF-8805 SYMBOL M - 100 g		
VIBRATION	PER MIL-PRF-8805 SYMBOL 1 - 10-500 Hz & 10 g peak		
MOISTURE RESISTANCE	PER MIL-PRF-8805 (10 DAY TEST)		
THERMAL SHOCK	PER MIL-PRF-8805 (5 CYCLE TEST)		
SALT SPRAY	PER MIL-PRF-8805 (96 HOUR TEST)		



NOTES

- △1 REPLACEMENT MOUNTING HARDWARE - PACKET 19PA8
- △2 SWITCH RESISTANCE = SWITCH CONTACT RESISTANCE AND INTERCONNECT LEADS AND CONNECTOR PINS SWITCH CONTACT RESISTANCE SHALL NOT EXCEED .025 Ω INITIALLY AND .040 Ω AFTER MECHANICAL ENDURANCE TEST. AFTER ELECTRICAL ENDURANCE, THE SWITCH CONTACT RESISTANCE SHALL NOT EXCEED 1% OF THE LOAD IMPEDANCE USING THE ELECTRICAL PARAMETERS OF THE ELECTRICAL ENDURANCE LOAD LEAD-WIRE AND CONNECTOR RESISTANCE = 0.50 Ω MAX
- △3 LIFE RATINGS ARE PER MIL-PRF-8805 REQUIREMENTS ACTUAL LIFE EXCEEDS RATED LIFE. CONTACT HONEYWELL-MICRO SWITCH FOR ADDITIONAL DATA
- 4 - CIRCUIT DIAGRAM, CATALOG LISTING, FED MFG CODE AND DATE CODE ARE SHOWN ON NAMEPLATE
- △5 HARDWARE MAY BE PACKAGED UNASSEMBLED PER MIL-PRF-8805
- △6 CONTACT HONEYWELL-MICRO SWITCH IF ADDITIONAL INFORMATION ON LOW ENERGY LOADS IS REQUIRED OR FOR HELP WITH SPECIFIC APPLICATION

DRAWING NUMBER 402EN122-RB

PAGE 1 OF 1

ISSUE 4

REVISIONS
A PR-23746
JJA
18 NOV 98

B CO94194
BLT
4 MAR 99

CHECK

CHECK

CHECK

CHECK

CHECK

REPLACES PR-23746

RELEASE NO.

PR-23746

CHECK

CHECK

CHECK

CHECK

CHECK

CHECK

CHECK

CHECK

THIS DRAWING COVERS A PROPRIETARY ITEM AND IS THE PROPERTY OF MICRO SWITCH, A DIVISION OF HONEYWELL. THIS DRAWING IS NOT TO BE COPIED OR USED WITHOUT THE APPROVAL OF MICRO SWITCH.

MICRO SWITCH
a Honeywell Division

SWITCH-ENCLOSED

CATALOG LISTING
402EN122-RB

FED. MFG. CODE 91929

THIRD ANGLE PROJECTION

SCALE NONE

DO NOT SCALE PRINT

UNLESS OTHERWISE SPECIFIED TOLERANCES ARE

ONE PLACE	(.0)	±.030
TWO PLACES	(.00)	±.015
THREE PLACES	(.000)	±.005
ANGLES		±

WEIGHT

X-ON Electronics

Largest Supplier of Electrical and Electronic Components

Click to view similar products for [Basic / Snap Action Switches](#) category:

Click to view products by [Honeywell](#) manufacturer:

Other Similar products are found below :

[83228001](#) [01.098.1358.1](#) [602EN1-6B](#) [602EN532](#) [602EN535-RB](#) [602HE5-RB1](#) [604HE162](#) [604HE223-6B](#) [624HE17-RB](#) [6HM89](#) [6PA78-JM](#)
[6SE1](#) [6SX1-H58](#) [70500840](#) [MBD5B1](#) [MBH2731](#) [73-316-0012](#) [79211759](#) [79211923](#) [79218589](#) [7AS12](#) [ML-1155](#) [ML-1376](#) [831010C3.0](#)
[831060C3.TL](#) [831090C2.EL](#) [83131904](#) [84212012](#) [8AS239](#) [8HM73-3](#) [903VB1-PG](#) [914CE1-6G](#) [PL-100](#) [11SM1077-H4](#) [11SM1077-H58](#)
[11SM1-TN107](#) [11SM405](#) [11SM703-T](#) [11SM8423-H2](#) [11SX37-T](#) [11SX48-H58](#) [11SX55-H58](#) [11SM2442-T](#) [11SM76-T](#) [11SM77-H58](#)
[11SM77-T](#) [11SM863-T](#) [11SM866](#) [11SX47-H58](#) [A7CN-1M-1-LEFT](#)