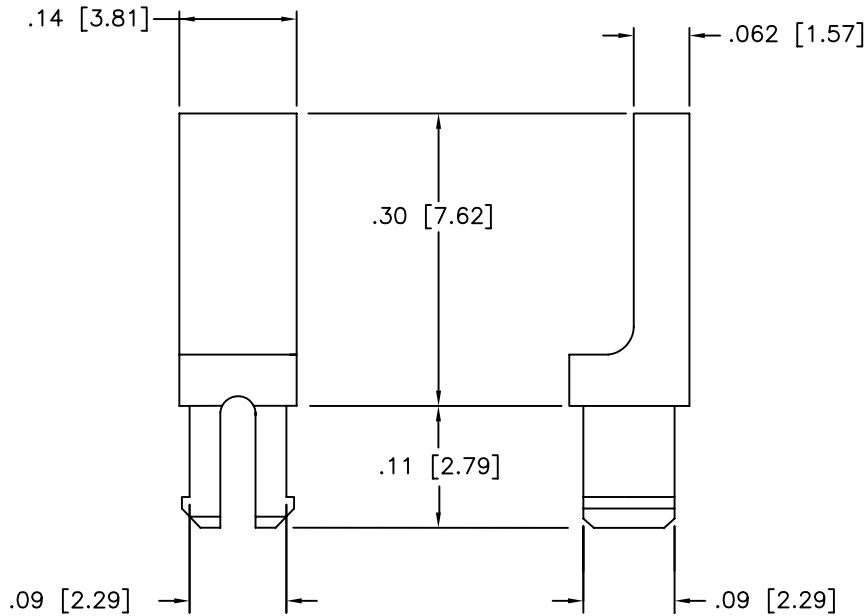



THIS DRAWING AND THE INFORMATION SET FORTH HEREON ARE THE PROPERTY OF TYCO ELECTRONICS CORPORATION AND ARE TO BE HELD IN TRUST AND CONFIDENCE. PUBLICATION, DUPLICATION, DISCLOSURE OR USE FOR ANY PURPOSE NOT EXPRESSLY AUTHORIZED IN WRITING BY TYCO ELECTRONICS CORPORATION IS PROHIBITED.

REVISION			
REV	DESCRIPTION	DATE	APPROVED
E	REVISED PER ECN T-18229	93-JUN-01	J.BLAIR
F	REDRAWN PER DCR# C040886	August/12/04	M.HIGGY





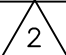
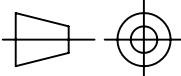
NOTES:

1. PART USED FOR KEYING ALL MTC CONNECTOR ASSEMBLIES.

 WEIGHT: 0.0002 Lbs. [0.091 gm.] MAXIMUM.

SPECIFICATION CONTROL DRAWING

© 2004 Tyco Electronics Corporation.  
All rights reserved

ITEM	QTY.	PART NO	DWG OR SPEC NO	DESCRIPTION
PARTS LIST				
UNLESS OTHERWISE SPECIFIED DIMENSIONS ARE INCHES. METRIC DIMENSIONS ARE IN BRACKETS.  DECIMAL TOLERANCES .XXX ± .005 [ .13 mm] .XX ± .01 [ .25 mm] .X ± [ mm]  ANGLE TOLERANCE .X ±		DRAWN <b>ZS.ORBAN</b>  APPROVED <b>M.HIGGY</b>  MATERIAL  FINISH	DATE August/4/04  DATE August/4/04	  TYCO ELECTRONICS 300 Constitution Drive Menlo Park, CA. 94025 USA  
WEIGHT  CAD FILE C040886.DWG		THIRD ANGLE PROJECTION 		SIZE A  CAGE CODE: 06090  DWG. NO. D-659-0045  F
DO NOT SCALE THIS DRAWING				SHEET 1 OF 1

MTC KEYING PIN

## X-ON Electronics

Largest Supplier of Electrical and Electronic Components

*Click to view similar products for [High Speed/Modular Connectors](#) category:*

*Click to view products by [TE Connectivity](#) manufacturer:*

Other Similar products are found below :

[2332816-1](#) [89006-1137LF](#) [650827-1](#) [65762-001LF](#) [73474-201LF](#) [74040-1346](#) [74075-0267](#) [88911-201LF](#) [9514M0C20D](#) [1410191-1](#)  
[1410337-1](#) [1410368-3](#) [1410964-2](#) [1410326-3](#) [1410367-3](#) [1410971-4](#) [1467833-1](#) [2000877-1](#) [2000878-1](#) [2041314-1](#) [2065387-1](#) [2187307-1](#)  
[2187462-1](#) [2226278-6](#) [KA81-07](#) [91290-101LF](#) [1934290-1](#) [2000875-1](#) [2065917-1](#) [2102736-2](#) [FSR-40](#) [2169868-2](#) [2226279-2](#) [22354-8](#) [437-](#)  
[5040-000](#) [5-1393565-0](#) [532449-3](#) [532803-2](#) [34745-0001](#) [0740618502](#) [0760151403](#) [0760551105](#) [0760551608](#) [0761451128](#) [0761651124](#)  
[0761655108](#) [0761659807](#) [0769853208](#) [0736440217](#) [0758324203](#)