

FEATURES

- 40A switching use relay at ambient temperature of 80°C
- Solder lug (quick connect) and PCB terminals are available for customer's selection.
- Contact form: 1 form C, 1 Form B, 1 Form A, and 2 Form A
- Using at automotives, direct connection with cell motors, transmission, and anti-locking braking system.



ORDERING INFORMATION

LD — 12 F

1 2 3 4 5

1. Type

2. Contact Arrangement

Nil : 1 Form C
 1A : 1 Form A
 1B : 1 Form B
 2A : 1PDM

3. Coil Nominal Voltage

4. Cover Type

F : Cover for Steel Bracket
 P : Cover for Plastic Bracket
 B : Plastic Cover

5. Terminal Type

Nil : Standard Type
 P : PCB Terminal

5. Special Mark

Nil : Standard Type.

- R1 : Coil parallel with 1/2W resistor 680Ω for 12VDC, 2700Ω for 24VDC.
 R2 : Coil parallel with 1/2W resistor 820Ω for 12VDC, 3200Ω for 24VDC.
 D1 : Coil parallel with diode 1N4007 the Positive pole "+" on # 85 terminal.
 D2 : Coil parallel with diode 1N4007 the Negative pole "-" on # 85 terminal.
 D3 : Coil parallel with diode 1N4004 the Positive pole "+" on # 85 terminal.
 D4 : Coil parallel with diode 1N4004 the Negative pole "-" on # 85 terminal.

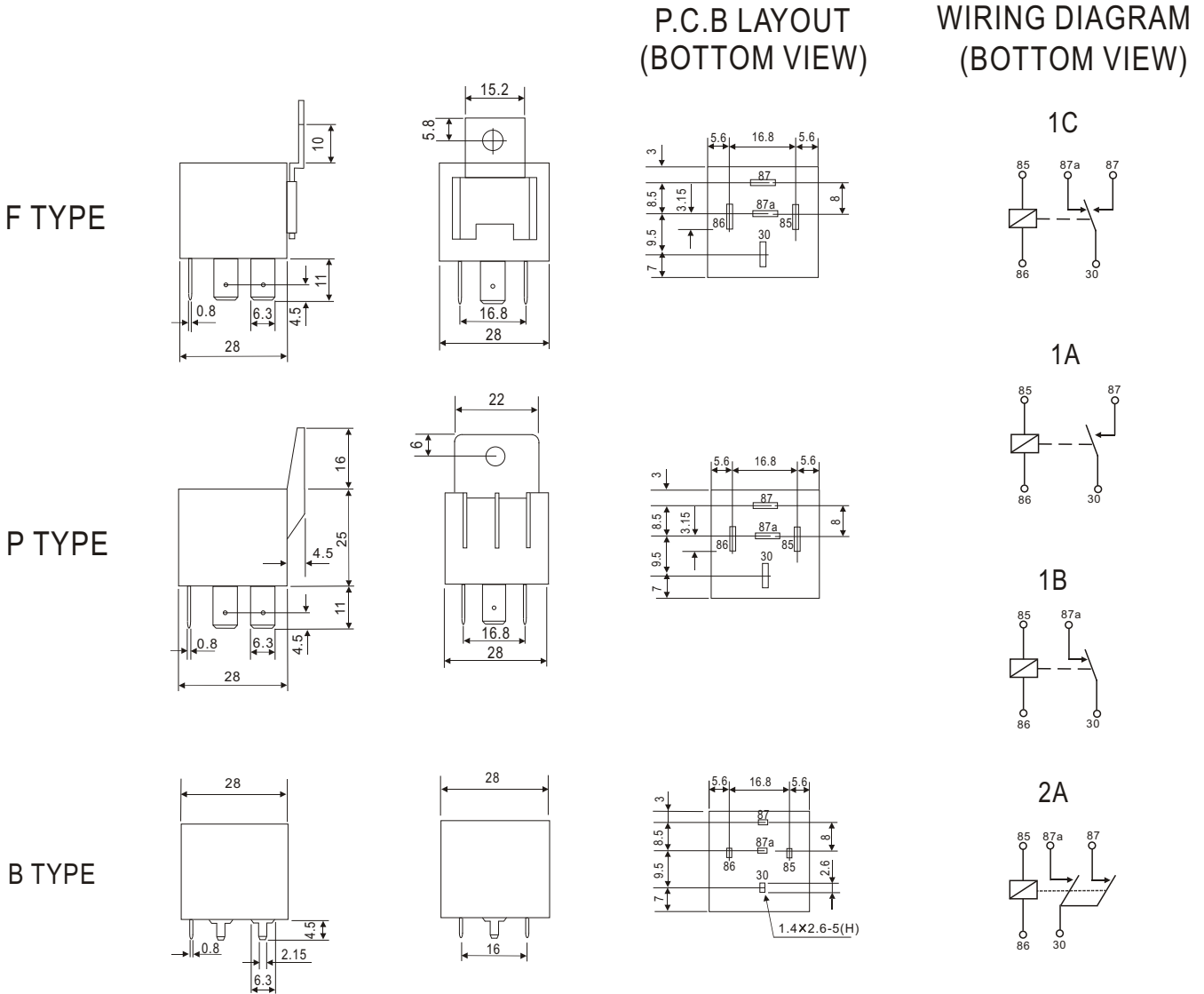
CONTACT RATING

1PDT	Resistive (Cos. = 1)	DC 12V	40A/30A
1PST-DM	Resistive (Cos. = 1)	DC 12V	2 x 20A

COIL DATA(1.8W, at 25°C)

Coil Nominal Voltage (VDC)	Resistance Tol.±10% (Ohms)	Nominal Current (mA)	Maximum Pick Up Voltage (V)	Minimum Drop Out Voltage (V)
12	80	150	7.8	1.2
24	320	75	17.0	2.4

DIMENSIONS(mm)



GENERAL DATA

Insulation Resistance	50 M Min. (DC 500V)
Dielectric Strength	500 VAC, 50/60Hz between contact.
	1,000 VAC, 50/60Hz between all elements.
Contact Material	Silver- Cadmium Oxide as standard.
Contact Resistance	100 milliohms max. (initial value)
Shock Resistance	Malfunction: 10G(11ms) ; Destructive: 100G(6ms)
Vibration Resistance	Malfunction: 10 to 55 Hz. at Double Amplitude of 1.5 mm
	Destructive: 10 to 55 Hz. at Double Amplitude of 1.5 mm
Operation Time	10 ms max.
Release Time	10 ms max.
Temperature Range	- 40°C ~ + 85°C
Expected Life	With operation rate 30/min.
	Mechanical - 1,000,000 operations min. Electrical - 100,000 operations min. at rated load.
Weight	38 grams

X-ON Electronics

Largest Supplier of Electrical and Electronic Components

Click to view similar products for [Automotive Relays](#) category:

Click to view products by [Rayex](#) manufacturer:

Other Similar products are found below :

[896H-1AH-D1SW-001-24VDC](#) [896H-1AH-D1SW-R1-12VDC](#) [896H-1CH-C1-001-12VDC](#) [896H-1CH-S-24VDC](#) [896HP-1AH-C-12VDC](#)
[G5CE1ASIDC12](#) [AEV31024](#) [1393204-2](#) [1393302-3](#) [13Z99A115-0074](#) [1432872-1](#) [1617057-2](#) [2-1617057-2](#) [CB1F-M-12V-H15](#) [CB1-T-R-M-12V](#) [896H-1CH-D1SF-R1-12VDC](#) [896H-1CH-D1SF-R1-T-12VDC](#) [898H-1AH-D-001-12VDC](#) [24198-1](#) [5-1616920-2](#) [5-1617052-9](#) [5407-0011-HS](#) [CB1AF-M-12V-H59](#) [5-1617346-8](#) [103-1AH-C-12VDC](#) [CF2Q-12V](#) [V23134A1052X299](#) [CP112J](#) [896H-1AH-S1-001-12VDC](#)
[897H-1AH-D-R1-U01-12VDC](#) [896H-1CH-D-U39-24VDC](#) [896HP-1AH-C-U2120VDC](#) [896E-1CH-D1SW-U57-12VDC](#) [896H-1CH-D1SW-R1-U30-12VDC](#) [896H-1AH-C1S-R1-24VDC](#) [102-1CH-C-12VDC](#) [V23076A3001D142T](#) [1-19042-6](#) [3-1393305-1](#) [J7TKNA9](#)
[V23234A1001X043-EV-144](#) [V23086-R1851-A502](#) [898H-1AH-D1SW-R1-12VDC](#) [RH4C1P2607](#) [RE031005](#) [V23134M0052G242](#) [1393204-1](#)
[G8N-1L-AS DC12](#) [V23076A3022D142](#) [V23074A2001A402](#)