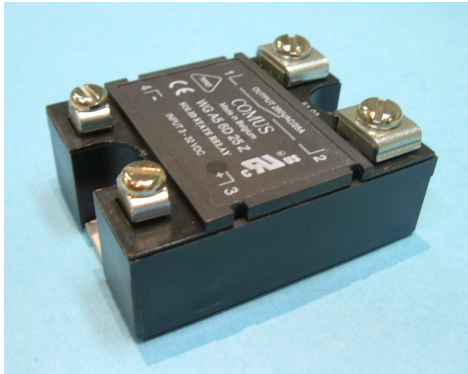


# Solid State Relays

## Datasheet WG A5 6A

Comus International Bvba  
 Overhaamlaan 40  
 3700 Tongeren, Belgium  
 Phone: +32 12390400  
 Fax: +32 12235754  
 Email: info@comus.be  
 www.comus.be



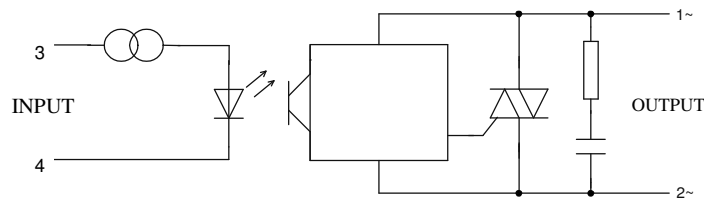
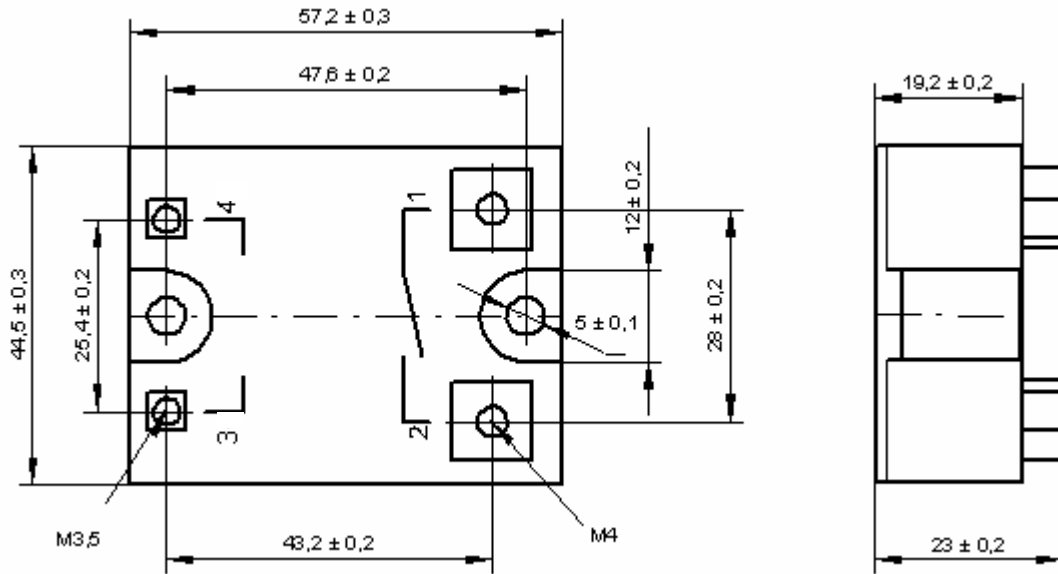
### Features

<b>Switching</b>	Zero cross and random
<b>Output</b>	Triac with internal snubber
<b>Input</b>	AC (input resistance of 30 Kohm)
<b>Applications</b>	resistive and inductive loads with $\cos\phi > 0,85$ (Z-Type) inductive load with $\cos\phi > 0,65$ (R-Type)

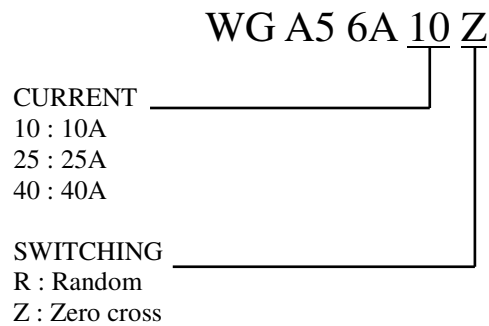
### Technical data

WG A5 6A...	10 Z	10 R	25 Z	25 R	40 Z	40 R
<b>Input circuit</b>						
Control voltage range	90...280 VAC					
Control current max.	10 mA					
Turn-off voltage min.	10 VAC					
Input resistance	30 KOhm					
<b>Output circuit</b>						
Load voltage range	24...280 VAC					
Peak-off-state voltage	600 V <sub>drm</sub>					
Off-state leakage current	6 mA eff.		12 mA eff.			
Load current range	0,1...10 A		0,1...25 A		0,2...40 A	
Surge current 1 half wave	110 A <sub>peak</sub>		230 A <sub>peak</sub>		400 A <sub>peak</sub>	
I <sup>2</sup> t for fusing	60 A <sup>2</sup> s		260 A <sup>2</sup> s		880 A <sup>2</sup> s	
On-state voltage	1,85 V <sub>peak</sub>					
Off-state (static) dv/dt	500 V/μs					
Snubber	47 Ω / 47 nF		47 Ω / 100 nF			
<b>General data</b>						
Turn-on time max.	33 ms	0,1 ms	33 ms	0,1 ms	33 ms	0,1 ms
Turn-off time max.	33 ms					
Line frequency range	47...63 Hz					
Isolation volt. between input/output	4.000 V					
Isolation volt. between input-output/base	2.500 V					
Isolation resistance	50 MΩ					
Operation temperature	-20...+80 °C					
Recommended varistor	SIOV-S20 K230					

### Dimensions in mm

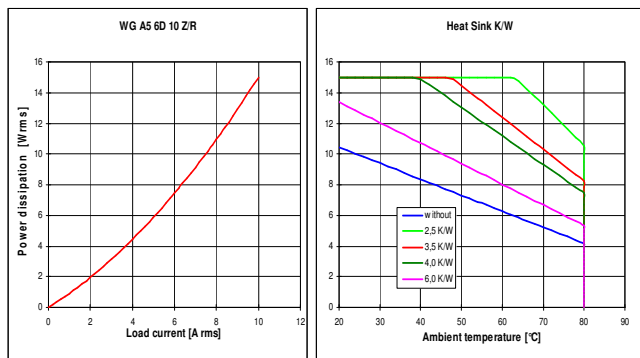


### Ordering Information



Options: Suffix - **P**, 100% potted

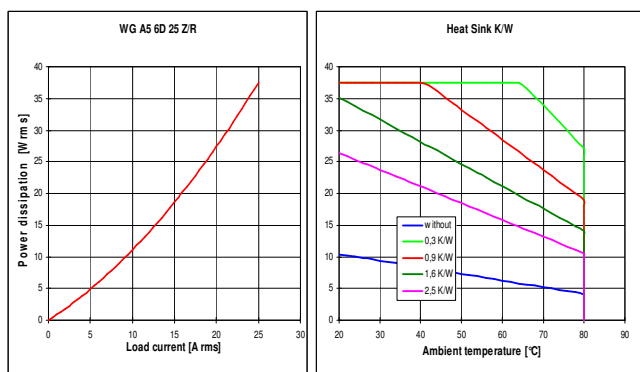
### Derating diagrams



#### Number of SSR per Heatsink/ Load current per SSR

Heat sink	1 SSR	2 SSR	3 SSR
WG K1/100	10 A	8 A	
WG K2/100	10 A	10 A	
WG K3/160	10 A	10 A	10 A
WG K4/160L	10 A	10 A	10 A
WG K5/80	10 A		

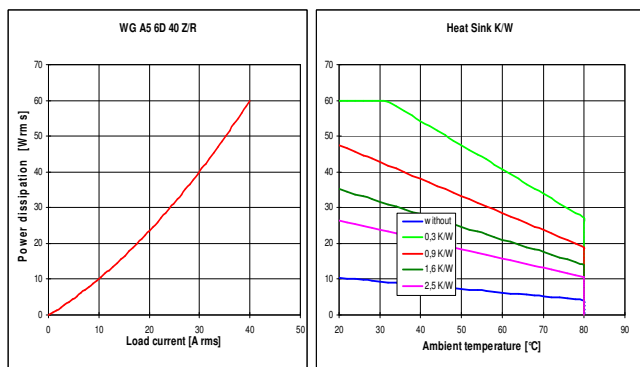
Values for 40 °C enclosure-temperature and mounted with conducting paste between the SSR and the heat sink



#### Number of SSR per Heatsink/ Load current per SSR

Heat sink	1 SSR	2 SSR	3 SSR
WG K1/100	14 A	10 A	
WG K2/100	17 A	14 A	
WG K3/160	25 A	21 A	18 A
WG K4/160L	25 A	25 A	25 A
WG K5/80	24 A		

Values for 40 °C enclosure-temperature and mounted with conducting paste between the SSR and the heat sink



#### Number of SSR per Heatsink/ Load current per SSR

Heat sink	1 SSR	2 SSR	3 SSR
WG K1/100	16 A	11 A	
WG K2/100	20 A	15 A	
WG K3/160	31 A	24 A	20 A
WG K4/160L	40 A	36 A	32 A
WG K5/80	27 A		

Values for 40 °C enclosure-temperature and mounted with conducting paste between the SSR and the heat sink

## X-ON Electronics

Largest Supplier of Electrical and Electronic Components

*Click to view similar products for [Solid State Relays - Industrial Mount](#) category:*

*Click to view products by [Comus](#) manufacturer:*

Other Similar products are found below :

[6225XXASRS-DC3](#) [D2440-C](#) [H10CA4890](#) [D4875C](#) [D53TP50DH-10](#) [1395831-1](#) [BR312BY](#) [A-1326](#) [AQY210SXE01](#) [AQY221N2SYD01](#)  
[AQY414SXE01](#) [26532764](#) [H10CA4850](#) [H12CA4890VL](#) [RA2410-D06](#) [D1202F](#) [D53TP50-10](#) [W230E-1-12](#) [W230T-3-12](#) [W6125ASX-1](#)  
[W6225DSX-2](#) [W6240DSX-4](#) [W6240DTX-2](#) [1-1617030-3](#) [1-1617033-9](#) [1-1617033-7](#) [MS2-D2420](#) [MS2-D2430](#) [A-1440](#) [4-1617080-0](#)  
[RJ1P60V50E](#) [RN1F48I50](#) [70.362.1028.0](#) [7-1393030-8](#) [Z5.509.0828.0](#) [W230E-2-5](#) [G3RV-SR700-D AC110](#) [G3RV-SR500-AL AC100](#)  
[G3RV-SR500-D ACDC24](#) [G3RV-SR500-AL ACDC24](#) [G3RV-SR700-D ACDC24](#) [G3RV-SR700-AL ACDC24](#) [G3RV-SR500-D DC12](#)  
[G3RV-SR700-A ACDC24](#) [G3RV-SR500-A ACDC24](#) [2912138](#) [2912141](#) [SSRDAC10](#) [1613353](#) [1613349](#)