

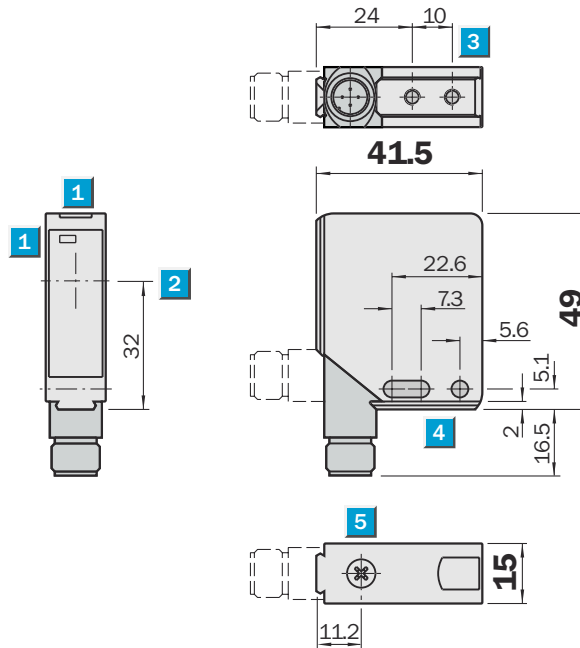
Scanning range
0 ... 7 m

Photoelectric reflex switch

- Red light; consequently, fast alignment is possible
- Insensitive to external light sources, i.e., increased operating reliability
- M12 plug rotatable by 90°, or 2 m/3 m cable
- Adjustable sensitivity; optimum adaptation to application



Dimensional drawing



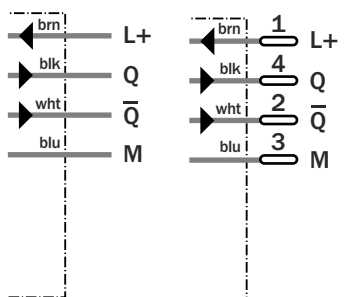
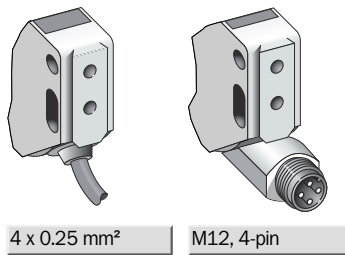
Adjustments possible



- 1 LED signal strength indicator
- 2 Centre of optical axis
- 3 M4 threaded mounting hole - 4 mm deep
- 4 Mounting holes \varnothing 4.2 mm
- 5 Sensitivity adjustment

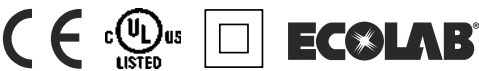
Connection type

WL12-2N120	WL12-2N420
WL12-2N130	WL12-2N430
WL12-2N730	WL12-2P420
WL12-2P120	WL12-2P430
WL12-2P130	



Accessories

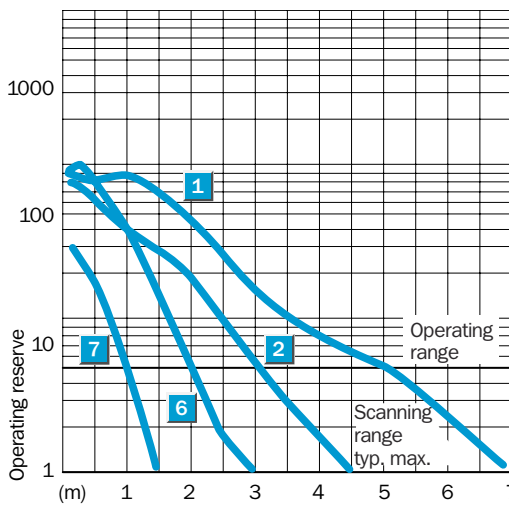
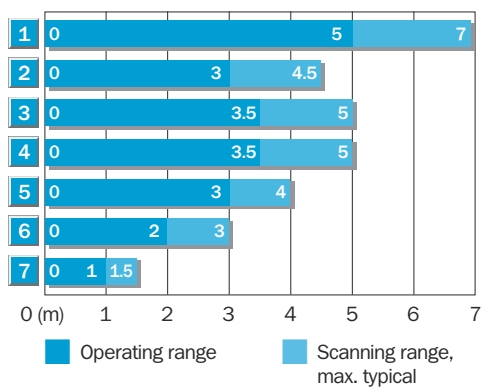
Connector, M12, 4-pin
Mounting systems
Reflectors



WL12-2		N120	N130	N420	N430	N730	P120	P130	P420	P430	P730
Scanning range typ. max.	0 ... 2 m										
	0 ... 7 m										
Scanning range, recommended	0 ... 1 m										
	0 ... 5 m										
Relating to	Reflector PL 80 A ¹⁾										
	Reflector PL 80 A ²⁾										
Sensitivity adjustment	Potentiometer										
Light source, light type	LED, Red light ³⁾										
Light spot diameter	2 mm at 90 mm distance										
	80 mm at 3 m distance										
Polarisation filter	✓										
Supply voltage V_s	DC 10 ... 30 V ⁴⁾										
Ripple	≤ 5 V _{SS} ⁵⁾										
Power consumption	≤ 40 mA ⁶⁾										
	≤ 30 mA ⁶⁾										
Switching outputs	NPN antivalent										
	PNP antivalent										
Output current I _a max	≤ 100 mA										
Response time	≤ 330 μs ⁷⁾										
Switching frequency	1,500 Hz ⁸⁾										
Connection type	Cable, 2 m ⁹⁾										
	Connector, M12, 4-pin										
	Cable, 3 m ⁹⁾										
VDE protection class	□ ¹⁰⁾										
Circuit protection	V _s connections reverse-polarity protected / Output Q and Q not short-circuit protected / Interference suppression										
Enclosure rating	IP 69K										
Ambient temperature operation	-40 °C ... +60 °C										
Ambient temperature storage	-40 °C ... +75 °C										
Weight	Ca. 200 g										
	Ca. 120 g										
	Ca. 230 g										
Housing material	Zinc die-cast ¹¹⁾										

1) Focus = 90 mm
 2) Focus = infinite
 3) Average service life 100,000 h at T_a = +25 °C
 4) Limit values
 5) May not exceed or fall short of V_s tolerances
 6) Without load
 7) Signal transit time with resistive load
 8) With light/dark ratio 1:1
 9) Do not bend below 0 °C
 10) Reference voltage 50 V DC
 11) Teflon-coated housing available on request

Scanning range and operating reserve



Reflector type	Operating range
1 PL 80 A	0 ... 5.0 m
2 C 110	0 ... 3.0 m
3 PL 50 A	0 ... 3.5 m
4 PL 40 A	0 ... 3.5 m
5 PL 30 A	0 ... 3.0 m
6 PL 20 A	0 ... 2.0 m
7 Reflective tape	0 ... 1.0 m

Ordering information	
Type	Order No.
WL12-2N120	1 016 084
WL12-2N130	1 016 085
WL12-2N420	1 016 091
WL12-2N430	1 016 092
WL12-2N730	1 016 088
WL12-2P120	1 016 095
WL12-2P130	1 016 096
WL12-2P420	1 016 101
WL12-2P430	1 016 102
WL12-2P730	1 016 098

X-ON Electronics

Largest Supplier of Electrical and Electronic Components

Click to view similar products for [Photoelectric Sensors](#) category:

Click to view products by [Sick](#) manufacturer:

Other Similar products are found below :

[E3JM-DS70R4T-US](#) [E3L2DC4](#) [E3RA-DN12 2M](#) [E3RA-DP12 2M](#) [E3S5LE4S](#) [E3S-AD38](#) [E3S-CR11 5M](#) [E3SCT11D5M](#) [E3SCT11M1J03M](#)
[E3T-SL14R](#) [E3T-SL24 5M](#) [E3T-ST12R](#) [E3X-CN02](#) [E3X-CN11 5M](#) [E3X-CN21 10M](#) [E3ZM-B66](#) [E3ZM-CL81H 2M](#) [E3Z-T62 2M](#)
[NJL5303R-TE1](#) [PB10CNT15PO](#) [PD60CNX20BP](#) [CX-491-P-J](#) [CX-491-Z](#) [XUM2BKCNL2T](#) [XUM2BKCNL2T](#) [XUM2BNANL2R](#) [Y92E-](#)
[ES30M](#) [Y92E-GS08SS](#) [ZXTDS04T](#) [ZX-XC4A 4M](#) [E3E23Y2US](#) [E3JM-DS70S4-US](#) [E3RA-RN11 2M](#) [E3S5LE42M](#) [E3S-LS20XB4 5M](#)
[E3TFD14N](#) [E3T-FD14R](#) [E3T-SL21 5M](#) [E3T-SL21M](#) [E3T-ST11R](#) [E3T-ST12 5M](#) [E3X-DA41-S-M1J 0.3M](#) [E3X-DAB6](#) [E3X-DAG8](#) [E3ZM-](#)
[B86](#) [E3ZM-CR81 2M](#) [E3ZM-CR86](#) [E3Z-T61A-L 2M](#) [ZX-XGC2R](#) [ZX-XB1A](#)