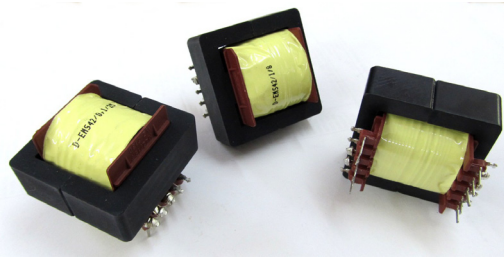


DEMS - SUPER-MSS INDUCTORS

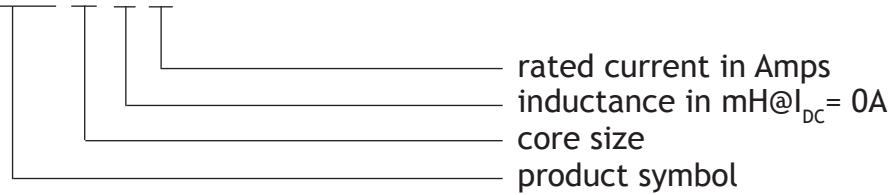


APPLICATIONS:

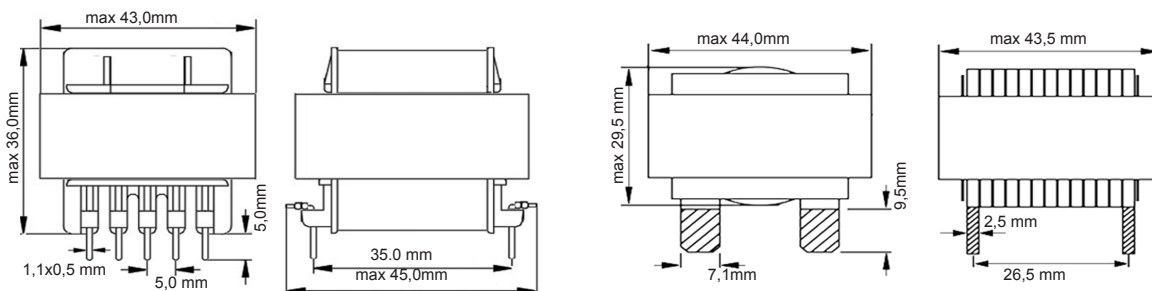
- power transformers (5kHz - 200kHz)
- interference suppression chokes (DC - 300kHz)
- energy storage chokes (DC - 300kHz)
- AC and DC filters
- flyback transformers
- PFC chokes
- EMI filters (DC - 1 MHz)
- soft and slow saturation at high current

ORDERING CODE:

DEMS-42/1/8



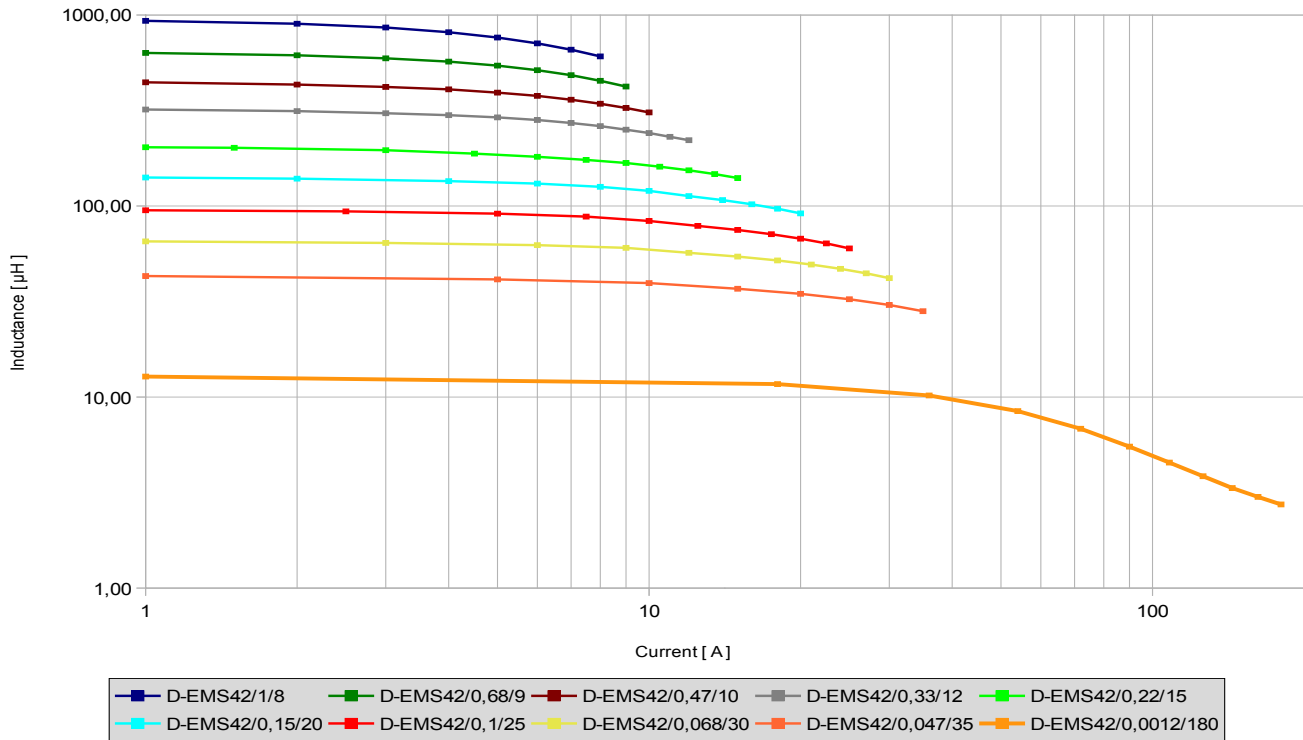
DIMENSIONS:



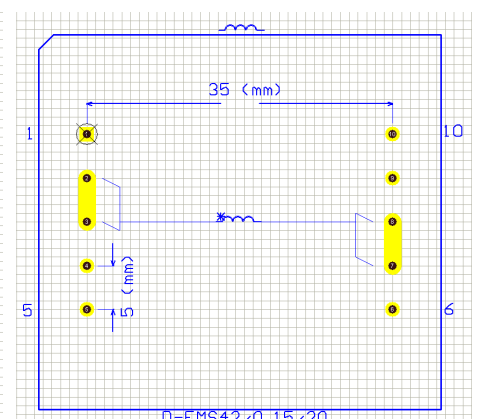
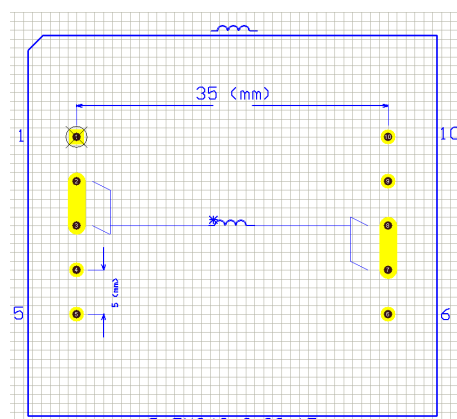
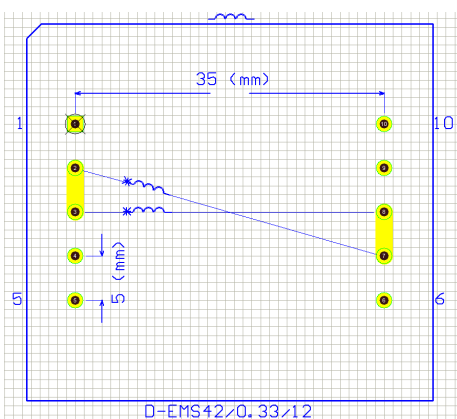
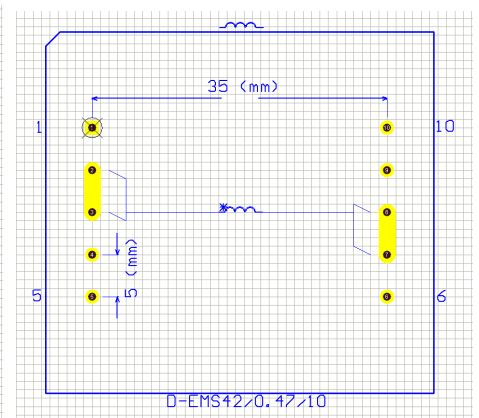
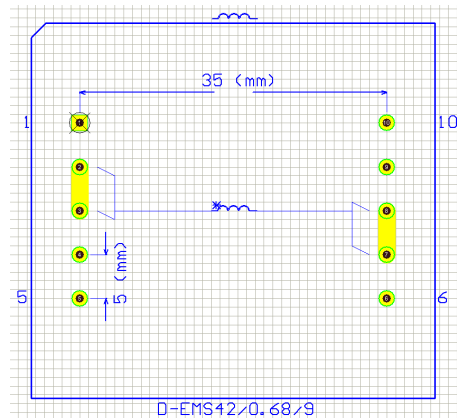
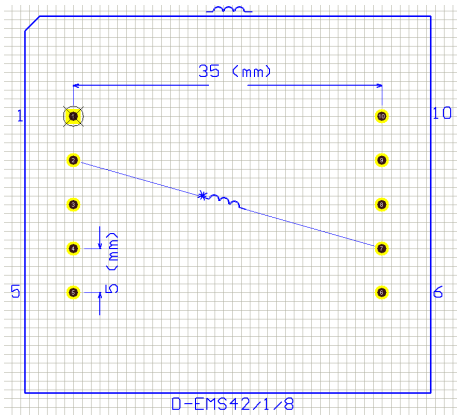
ELECTRICAL PROPERTIES:

DEMS chokes						
symbol	Lmax [μH]	Imax [A]	L@Imax [μH]	RDC [Ω]	litz wires [mm]	cross section [mm ²]
DEMS-42/1,00/8	1000	8,0	607	0,155	8x0,355	0,8
DEMS-42/0,68/9	680	9,0	422	0,110	28x0,2	0,85
DEMS-42/0,47/10	470	10,0	309	0,086	10x0,35	1,0
DEMS-42/0,33/12	330	12,0	221	0,063	2x6x0,35	1,2
DEMS-42/0,22/15	220	15,0	140	0,043	15x0,35	1,5
DEMS-42/0,15/20	150	20,0	91	0,033	20x0,35	2,0
DEMS-42/0,10/25	100	25,0	60	0,022	25x0,35	2,5
DEMS-42/0,068/30	68	30,0	42	0,017	30x0,35	3,0
DEMS-42/0,047/35	47	35,0	28	0,012	35x0,35	3,5
DEMS-42/0,012/180	13	180,0	2,74	0,0001	flat 7,1x2,5	17,75

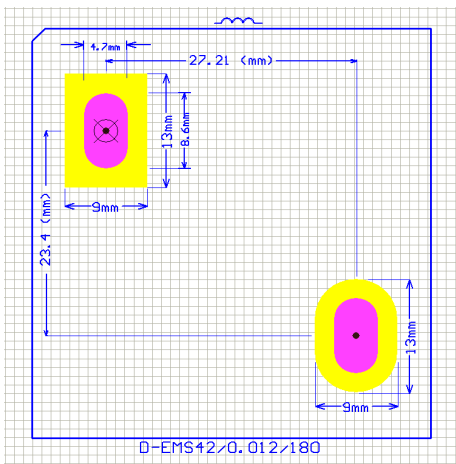
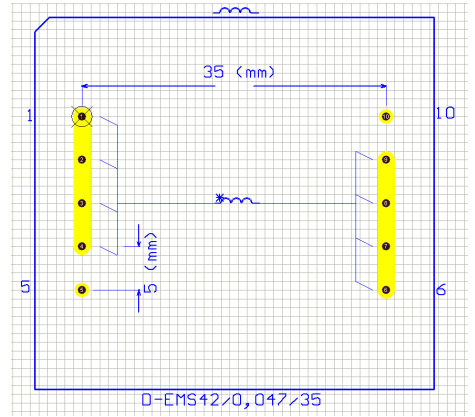
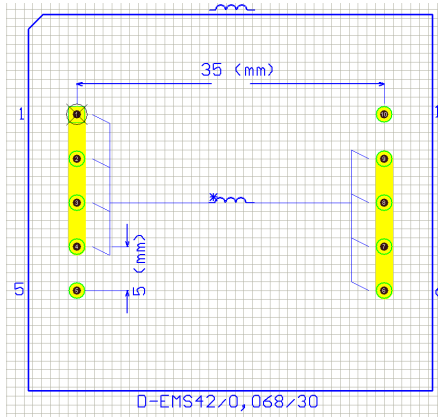
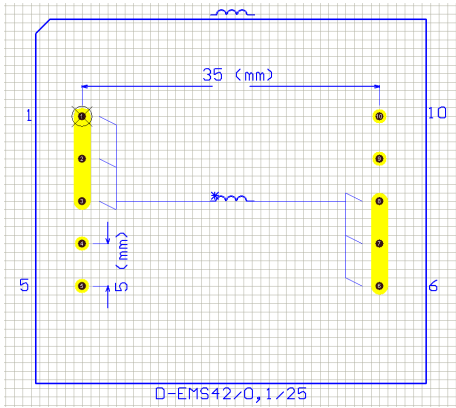
CHARACTERISTICS:



FOOTPRINTS AND WINDINGS CONECTIONS (TOP VIEW):



FOOTPRINTS AND WINDINGS CONNECTIONS:



X-ON Electronics

Largest Supplier of Electrical and Electronic Components

Click to view similar products for [Fixed Inductors](#) category:

Click to view products by [Feryster](#) manufacturer:

Other Similar products are found below :

[MLZ1608M6R8WTD25](#) [MLZ1608N6R8LT000](#) [MLZ1608N3R3LTD25](#) [MLZ1608N3R3LT000](#) [MLZ1608N150LT000](#)

[MLZ1608M150WTD25](#) [MLZ1608M3R3WTD25](#) [MLZ1608M3R3WT000](#) [MLZ1608M150WT000](#) [MLZ1608A1R5WT000](#)

[MLZ1608N1R5LT000](#) [B82432C1333K000](#) [PCMB053T-1R0MS](#) [PCMB053T-1R5MS](#) [PCMB104T-1R5MS](#) [CR32NP-100KC](#) [CR32NP-](#)

[151KC](#) [CR32NP-180KC](#) [CR32NP-181KC](#) [CR32NP-1R5MC](#) [CR32NP-390KC](#) [CR32NP-3R9MC](#) [CR32NP-680KC](#) [CR32NP-820KC](#)

[CR32NP-8R2MC](#) [CR43NP-390KC](#) [CR43NP-560KC](#) [CR43NP-680KC](#) [CR54NP-181KC](#) [CR54NP-470LC](#) [CR54NP-820KC](#) [CR54NP-8R5MC](#)

[MGDQ4-00004-P](#) [MGDU1-00016-P](#) [MHL1ECTTP18NJ](#) [MHL1JCTTD12NJ](#) [PE-51506NL](#) [PE-53601NL](#) [PE-53630NL](#) [PE-53824SNLT](#) [PE-](#)

[62892NL](#) [PE-92100NL](#) [PG0434.801NLT](#) [PG0936.113NLT](#) [PM06-2N7](#) [PM06-39NJ](#) [HC2LP-R47-R](#) [HC2-R47-R](#) [HC3-2R2-R](#) [HC8-1R2-R](#)