

NOTES :

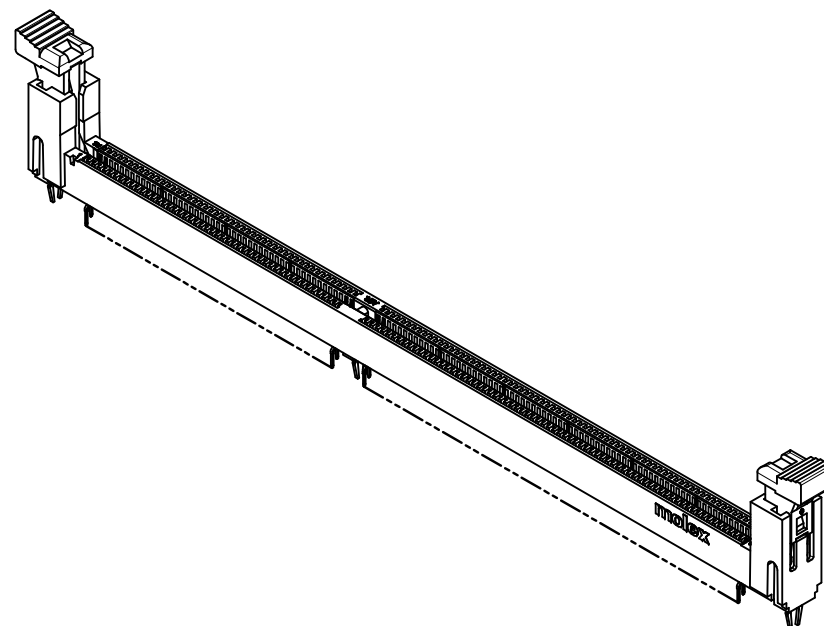
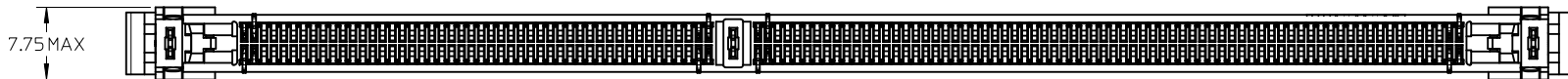
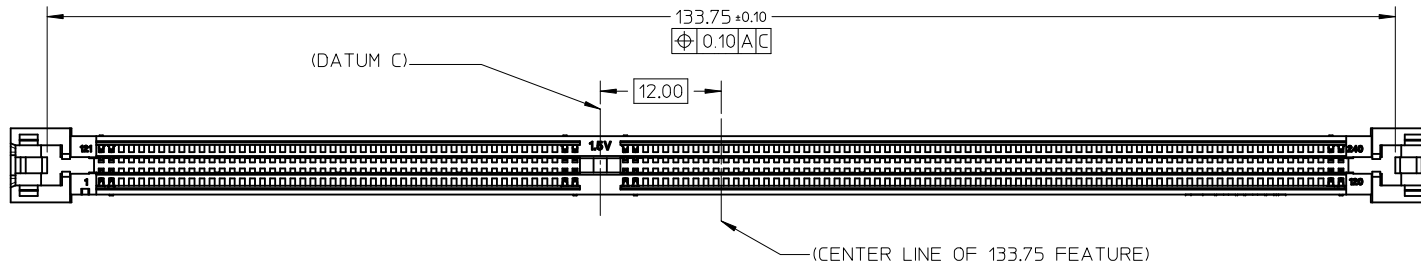
- MATERIAL : HOUSING - HIGH TEMP. NYLON, GLASS FILLED, UL 94V-0  
COLOUR : SEE SHEET 6  
LATCH - HIGH TEMP NYLON, GLASS FILLED, UL 94V-0  
COLOUR : SEE SHEET 6  
TERMINAL : COPPER ALLOY.
- TERMINAL PLATING OPTIONS: SEE TABLE ON SHEETS 6.
- PRODUCT SPECIFICATION: SEE TABLE ON SHEETS 6.
- PACKAGING INFORMATION: PRODUCT SHALL BE PACKED IN TRAY
- CARD SLOT ACCEPTS 1.27±0.10MM MODULE THICKNESS (MEASURED FROM P.C. PADS).

THIS DESIGN IS BASED ON DESIGN OBJECTIVES AND IS STRICTLY TENTATIVE. IT MAY CHANGE BASED ON RESULTS OF ADDITIONAL DESIGN REVIEWS AND VERIFICATIONS.

- 6. MOLEX LOGO, DATE & PART NO. INDICATED ON HOUSING.
- 7. MODULE SEATING PLANE FROM TOP OF PCB.
- 8. KEEP OUT ZONE RESERVED FOR LATCH.
- 9. HIGH TEMPERATURE REFLOW UP TO 260°C CAPABLE.
- 10. HALOGEN FREE FOR ALL PLASTIC MATERIAL.

FORKLOCK UPDATED EC NO: S2010-0888 DRWN: JAKEEMEW 2010/04/22 CHKD: CCTEH 2010/06/10 APPR: SHLENI 2010/06/13	DESCRIPTION QUALITY SYMBOLS $F_A=0$ $F_C=0$ $F_P=0$	GENERAL TOLERANCES (UNLESS SPECIFIED)		DIMENSION STYLE MM ONLY		SCALE NTS	DESIGN UNITS METRIC	THIRD ANGLE PROJECTION		
			mm	INCH	DRAWN BY JAKEEMEW	DATE 2009/10/01	TITLE DDR3 DIMM, 100MM PITCH 240 CKTS, VERTICAL T/H			
		4 PLACES	± ---	± ---	CHECKED BY CGTAN	DATE 2009/11/12	MOLEX INCORPORATED DOCUMENT NO. SD-78543-001 SHEET NO. 1 OF 7			
		3 PLACES	± ---	± ---	APPROVED BY SHLENI	DATE 2010/06/10				
2 PLACES	± 0.2	± ---	MATERIAL NO.		SEE TABLE					
1 PLACE	± ---	± ---	SIZE A3		THIS DRAWING CONTAINS INFORMATION THAT IS PROPRIETARY TO MOLEX INCORPORATED AND SHOULD NOT BE USED WITHOUT WRITTEN PERMISSION					
DRAFT WHERE APPLICABLE MUST REMAIN WITHIN DIMENSIONS										

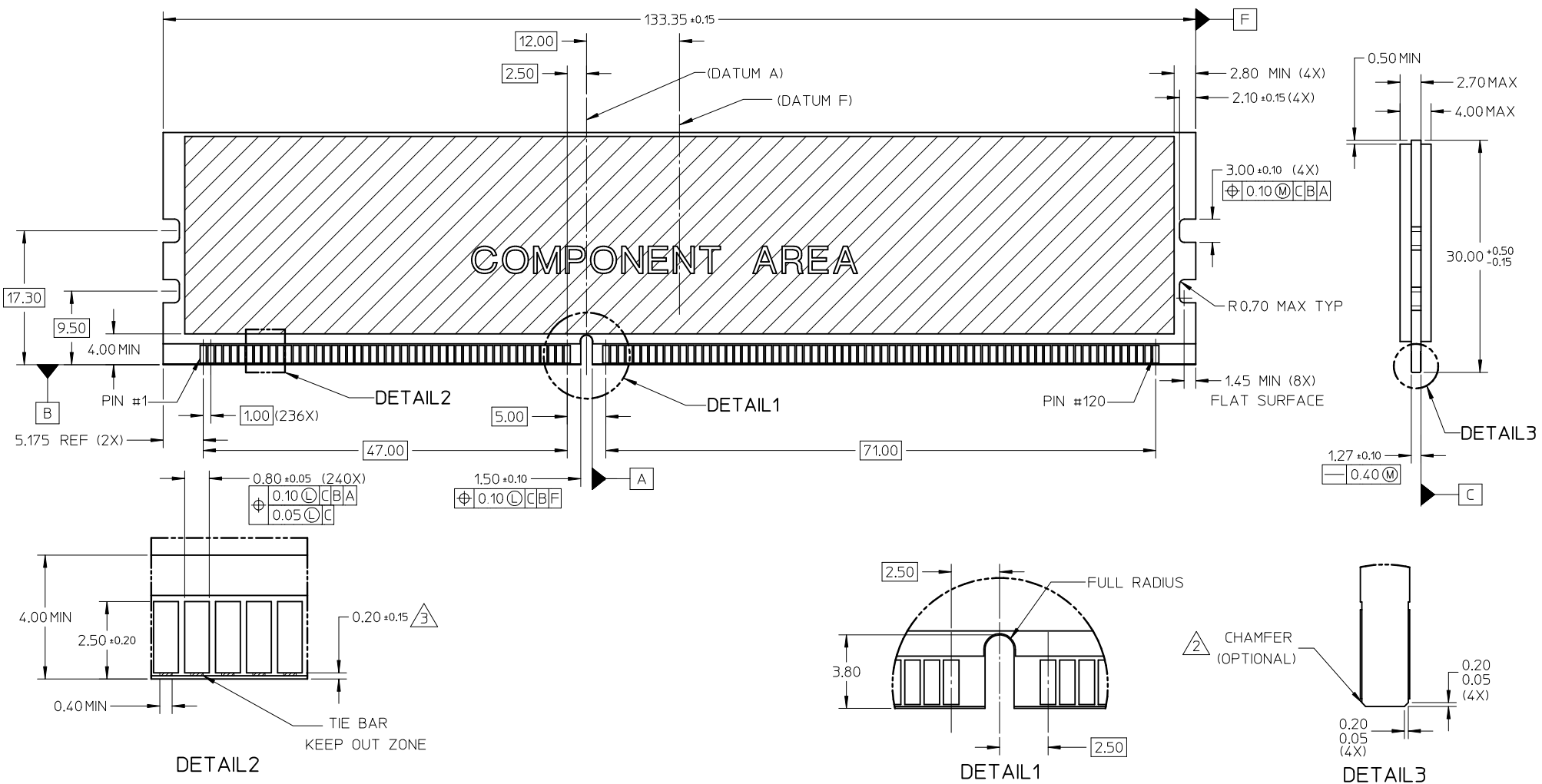
10 9 8 7 6 5 4 3 2 1



FORKLOCK UPDATED EC NO: S2010-0888 DRWN: JAKEEMEW 2010/04/22 CHKD: CCTEH 2010/06/10 APPR: SHLENI 2010/06/13	REV 2	DESCRIPTION QUALITY SYMBOLS $F_A=0$ $F_C=0$ $F_P=0$	GENERAL TOLERANCES (UNLESS SPECIFIED)		DIMENSION STYLE MM ONLY		SCALE NTS	DESIGN UNITS METRIC	THIRD ANGLE PROJECTION			
				mm	INCH	DRAWN BY JAKEEMEW	DATE 2009/10/01	TITLE DDR3 DIMM, 100MM PITCH 240 CKTS, VERTICAL T/H				
			4 PLACES	± ---	± ---	CHECKED BY CGTAN	DATE 2009/11/12	MOLEX INCORPORATED				
			3 PLACES	± ---	± ---	APPROVED BY SHLENI	DATE 2010/06/10	MATERIAL NO. SEE TABLE	DOCUMENT NO. SD-78543-001	SHEET NO. 2 OF 7		
2 PLACES	± 0.2	± ---	ANGULAR ± 1 °		THIS DRAWING CONTAINS INFORMATION THAT IS PROPRIETARY TO MOLEX INCORPORATED AND SHOULD NOT BE USED WITHOUT WRITTEN PERMISSION							
1 PLACE	± ---	± ---	DRAFT WHERE APPLICABLE MUST REMAIN WITHIN DIMENSIONS									

9 8 7 6 5 4 3 2 1

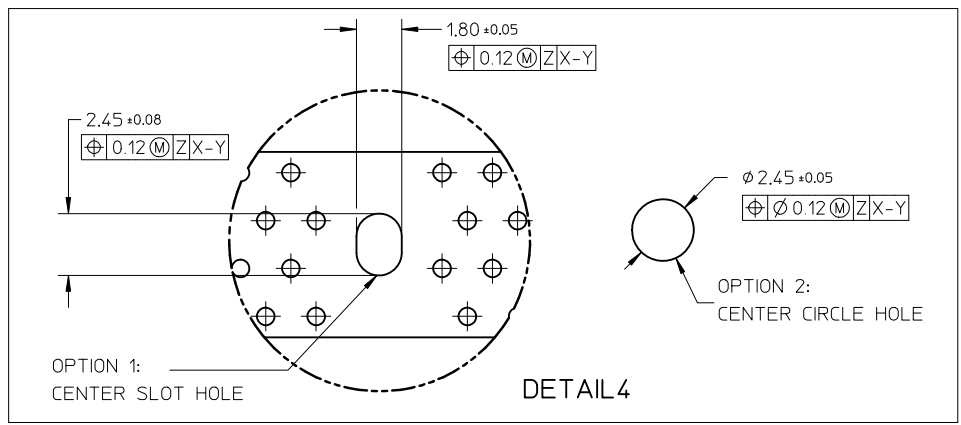
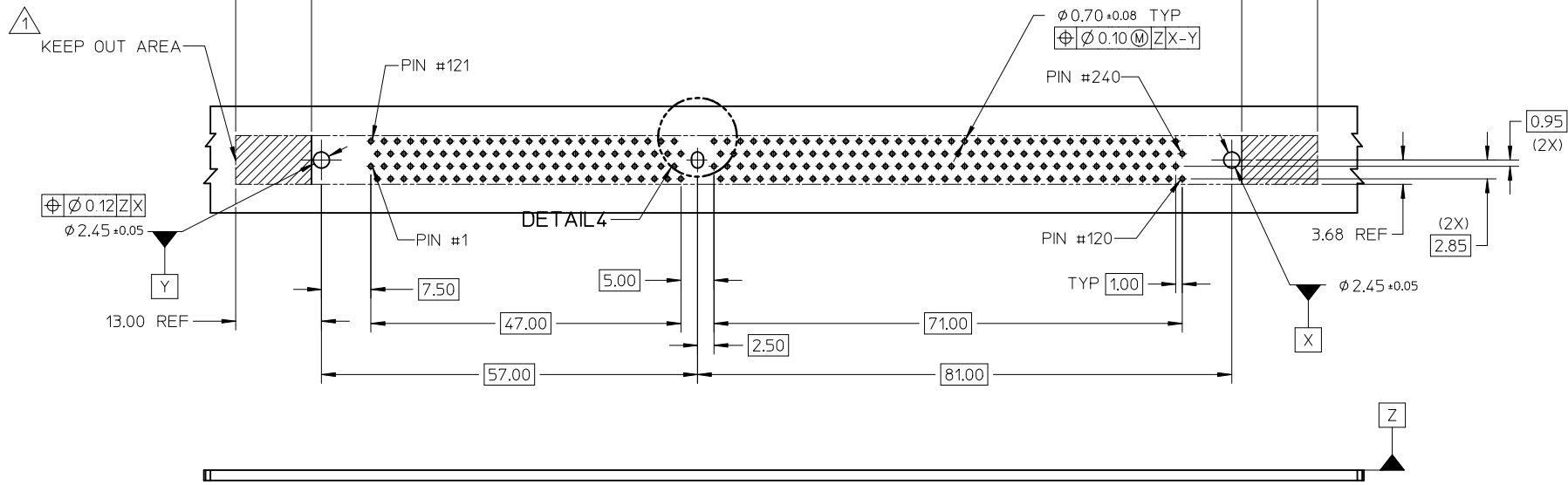
MODULE CARD  
 DDR3 DUAL IN-LINE MEMORY MODULE FAMILY 1.00MM CONTACT CENTERS  
 (JEDEC MO-269, ISSUE B, MAY 06)



- NOTES:
- RECOMMENDED PLATING FOR CONTACT PADS:  
 PREFERRED: 0.76 MICROMETERS GOLD PLATING MIN OVER 2.00 MICROMETERS NICKEL  
 ALTERNATIVE: 0.05-0.75 MICROMETERS GOLD PLATING OVER 2.00 MICROMETERS NICKEL MUST USE AN ELECTRONIC CONTACT GRADE CORROSIVE BARRIER LUBRICANT
  - CHAMFER IS OPTIONAL AND IS NOT TO HIT THE GOLD PADS
  - LEADING EDGE OF GOLD PADS SPECIFIED BY KEEPOUT ZONE SHALL BE FREE OF BURRS AND EXTERNAL TIE BARS.

FORKLOCK UPDATED EC NO: S2010-0888 DRWN: JAKEEMEW 2010/04/22 CHYKD: CCTEH 2010/06/10 APPR: SHLENI 2010/06/13	DESCRIPTION 2	QUALITY SYMBOLS	GENERAL TOLERANCES (UNLESS SPECIFIED)	DIMENSION STYLE	SCALE	DESIGN UNITS	THIRD ANGLE PROJECTION													
		$F_A = 0$ $F_G = 0$ $F_P = 0$	<table border="1"> <tr><th>mm</th><th>INCH</th></tr> <tr><td>4 PLACES ± ---</td><td>± ---</td></tr> <tr><td>3 PLACES ± ---</td><td>± ---</td></tr> <tr><td>2 PLACES ± 0.2</td><td>± ---</td></tr> <tr><td>1 PLACE ± ---</td><td>± ---</td></tr> </table>	mm	INCH	4 PLACES ± ---	± ---	3 PLACES ± ---	± ---	2 PLACES ± 0.2	± ---	1 PLACE ± ---	± ---	MM ONLY	NTS	METRIC	<input checked="" type="checkbox"/> THIRD ANGLE <input type="checkbox"/> PROJECTION			
		mm	INCH																	
		4 PLACES ± ---	± ---																	
3 PLACES ± ---	± ---																			
2 PLACES ± 0.2	± ---																			
1 PLACE ± ---	± ---																			
<table border="1"> <tr><td>ANGULAR ± 1 °</td></tr> </table>	ANGULAR ± 1 °	<table border="1"> <tr><th>DRAWN BY</th><th>DATE</th><th>TITLE</th></tr> <tr><td>JAKEEMEW</td><td>2009/10/01</td><td rowspan="3">DDR3 DIMM, 1.00MM PITCH 240 CKTS, VERTICAL T/H</td></tr> <tr><td>CGTAN</td><td>2009/11/12</td></tr> <tr><td>SHLENI</td><td>2010/06/10</td></tr> </table>	DRAWN BY	DATE	TITLE	JAKEEMEW	2009/10/01	DDR3 DIMM, 1.00MM PITCH 240 CKTS, VERTICAL T/H	CGTAN	2009/11/12	SHLENI	2010/06/10	<table border="1"> <tr><th>MATERIAL NO.</th><th>DOCUMENT NO.</th></tr> <tr><td>SEE TABLE</td><td>SD-78543-001</td></tr> </table>	MATERIAL NO.	DOCUMENT NO.	SEE TABLE	SD-78543-001	<table border="1"> <tr><th>SHEET NO.</th></tr> <tr><td>3 OF 7</td></tr> </table>	SHEET NO.	3 OF 7
ANGULAR ± 1 °																				
DRAWN BY	DATE	TITLE																		
JAKEEMEW	2009/10/01	DDR3 DIMM, 1.00MM PITCH 240 CKTS, VERTICAL T/H																		
CGTAN	2009/11/12																			
SHLENI	2010/06/10																			
MATERIAL NO.	DOCUMENT NO.																			
SEE TABLE	SD-78543-001																			
SHEET NO.																				
3 OF 7																				
DRAFT WHERE APPLICABLE MUST REMAIN WITHIN DIMENSIONS		SIZE A3	THIS DRAWING CONTAINS INFORMATION THAT IS PROPRIETARY TO MOLEX INCORPORATED AND SHOULD NOT BE USED WITHOUT WRITTEN PERMISSION																	

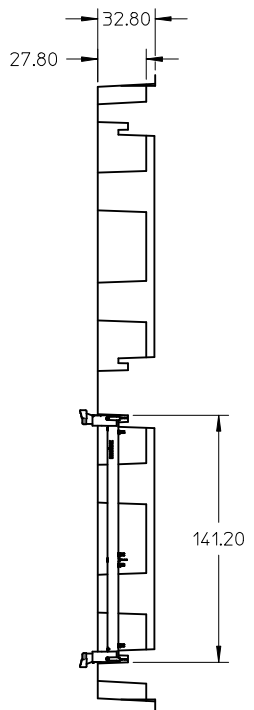
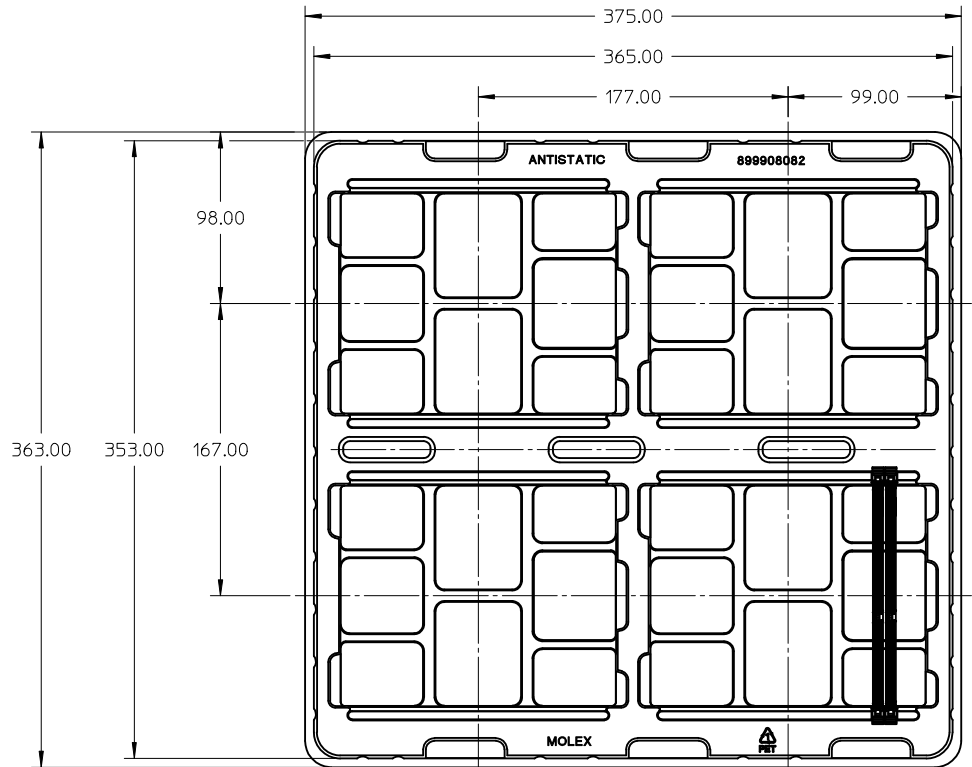
10 9 8 7 6 5 4 3 2 1



NOTE:  
 1. KEEP OUT AREA IS THE AREA WHERE THE CONNECTOR (INCLUDING LATCH) IS MOUNTED ON THE PCB.

FORKLOCK UPDATED EC NO: S2010-0888 DRWN: JAKEEMEW 2010/04/22 CHKD: CTEH 2010/06/10 APPR: SHLENI 2010/06/13	QUALITY SYMBOLS $F_A=0$ $F_G=0$ $F_P=0$	GENERAL TOLERANCES (UNLESS SPECIFIED)		DIMENSION STYLE MM ONLY		SCALE NTS	DESIGN UNITS METRIC	THIRD ANGLE PROJECTION	
		4 PLACES $\pm$ --- $\pm$ --- 3 PLACES $\pm$ --- $\pm$ --- 2 PLACES $\pm 0.2$ $\pm$ --- 1 PLACE $\pm$ --- $\pm$ ---	mm    INCH	DRAWN BY JAKEEMEW	DATE 2009/10/01	TITLE DDR3 DIMM, 100MM PITCH 240 CKTS, VERTICAL T/H			
		ANGULAR $\pm 1^\circ$		CHECKED BY CGTAN	DATE 2009/11/12	MOLEX INCORPORATED			
	2	DRAFT WHERE APPLICABLE MUST REMAIN WITHIN DIMENSIONS	MATERIAL NO. SEE TABLE	APPROVED BY SHLENI	DATE 2010/06/10	DOCUMENT NO. SD-78543-001	SHEET NO. 4 OF 7		

9 8 7 6 5 4 3 2 1



NOTES:  
1. QTY OF CAVITY: 20 X 4 = 80 PCS

<b>FORKLOCK UPDATED</b> EC NO: S2010-0888 DRWN: JAKEEMEW 2010/04/22 CHKD: CCTEH 2010/06/10 APPR: SHLENI 2010/06/13	REV 2	DESCRIPTION QUALITY SYMBOLS $F_A=0$ $F_C=0$ $F_P=0$	GENERAL TOLERANCES (UNLESS SPECIFIED)		DIMENSION STYLE <b>MM ONLY</b>		SCALE NTS	DESIGN UNITS METRIC	THIRD ANGLE PROJECTION			
			4 PLACES	$\pm$ ---	$\pm$ ---	DRAWN BY JAKEEMEW	DATE 2009/10/01	TITLE <b>DDR3 DIMM, 100MM PITCH 240 CKTS, VERTICAL T/H</b>				
			3 PLACES	$\pm$ ---	$\pm$ ---	CHECKED BY CGTAN	DATE 2009/11/12	APPROVED BY SHLENI				
			2 PLACES	$\pm$ 0.2	$\pm$ ---	DATE 2010/06/10	MATERIAL NO. <b>SEE TABLE</b>					
1 PLACE			$\pm$ ---	$\pm$ ---	ANGULAR $\pm$ 1°		<b>MOLEX INCORPORATED</b>		DOCUMENT NO. <b>SD-78543-001</b>	SHEET NO. <b>5 OF 7</b>		
DRAFT WHERE APPLICABLE MUST REMAIN WITHIN DIMENSIONS			SIZE <b>A3</b>		THIS DRAWING CONTAINS INFORMATION THAT IS PROPRIETARY TO MOLEX INCORPORATED AND SHOULD NOT BE USED WITHOUT WRITTEN PERMISSION							

ASSEMBLY PART NO.	VOLTAGE KEY	HOUSING COLOR	LATCH COLOR	DIM 'P'	RECOMMENDED PCB THICKNESS	PLATING OPTION	PRODUCT SPECIFICATION		
78543-0001	CENTRE (1.5V)	BLACK	BLACK	2.67	1.57	0.38 MICROMETER/ 15 MICROINCH MIN. GOLD ON CONTACT	PS-78543-001		
78543-0003				3.00	2.18	2.54 MICROMETER/ 100 MICROINCH MIN. PURE TIN ON SOLDERTAILS			
78543-0002				3.18	2.36	1.27 MICROMETER/ 50 MICROINCH MIN. NICKEL UNDERPLATE			
78543-0011				2.67	1.57	0.76 MICROMETER/ 30 MICROINCH MIN. GOLD ON CONTACT		PS-78543-002	
78543-0013				3.00	2.18	2.54 MICROMETER/ 100 MICROINCH MIN. PURE TIN ON SOLDERTAILS			
78543-0012				3.18	2.36	1.27 MICROMETER/ 50 MICROINCH MIN. NICKEL UNDERPLATE			
78543-0021				2.67	1.57	0.076 MICROMETER/ 3 MICROINCH MIN. GOLD ON CONTACT			PS-78543-003
78543-0023				3.00	2.18	2.54 MICROMETER/ 100 MICROINCH MIN. PURE TIN ON SOLDERTAILS			
78543-0022				3.18	2.36	1.27 MICROMETER/ 50 MICROINCH MIN. NICKEL UNDERPLATE			
78543-0031				2.67	1.57	0.51 MICROMETER/ 20 MICROINCH MIN. GOLD ON CONTACT		PS-78543-001	
78543-0033				3.00	2.18	2.54 MICROMETER/ 100 MICROINCH MIN. PURE TIN ON SOLDERTAILS			
78543-0032				3.18	2.36	1.27 MICROMETER/ 50 MICROINCH MIN. NICKEL UNDERPLATE			
78543-0051			2.67	1.57	0.38 MICROMETER/ 15 MICROINCH MIN. GOLD ON CONTACT	PS-78543-001			
78543-0053			3.00	2.18	2.54 MICROMETER/ 100 MICROINCH MIN. PURE TIN ON SOLDERTAILS				
78543-0052			3.18	2.36	1.27 MICROMETER/ 50 MICROINCH MIN. NICKEL UNDERPLATE				
78543-0061			NATURAL (OFFWHITE)	2.67	1.57	0.76 MICROMETER/ 30 MICROINCH MIN. GOLD ON CONTACT	PS-78543-002		
78543-0063				3.00	2.18	2.54 MICROMETER/ 100 MICROINCH MIN. PURE TIN ON SOLDERTAILS			
78543-0062				3.18	2.36	1.27 MICROMETER/ 50 MICROINCH MIN. NICKEL UNDERPLATE			
78543-0071				2.67	1.57	0.076 MICROMETER/ 3 MICROINCH MIN. GOLD ON CONTACT	PS-78543-003		
78543-0073				3.00	2.18	2.54 MICROMETER/ 100 MICROINCH MIN. PURE TIN ON SOLDERTAILS			
78543-0072				3.18	2.36	1.27 MICROMETER/ 50 MICROINCH MIN. NICKEL UNDERPLATE			
78543-0081				2.67	1.57	0.51 MICROMETER/ 20 MICROINCH MIN. GOLD ON CONTACT	PS-78543-001		
78543-0083				3.00	2.18	2.54 MICROMETER/ 100 MICROINCH MIN. PURE TIN ON SOLDERTAILS			
78543-0082				3.18	2.36	1.27 MICROMETER/ 50 MICROINCH MIN. NICKEL UNDERPLATE			

<b>FORKLOCK UPDATED</b> EC NO: S2010-0888 DRWN: JAKEEMW 2010/04/22 CHKD: CCTEH 2010/06/10 APPR: SHLENI 2010/06/13	QUALITY SYMBOLS	GENERAL TOLERANCES (UNLESS SPECIFIED)	DIMENSION STYLE <b>MM ONLY</b>	SCALE <b>NTS</b>	DESIGN UNITS <b>METRIC</b>	THIRD ANGLE PROJECTION	
	$F_A=0$ $F_C=0$ $F_P=0$	mm    INCH 4 PLACES ± --- ± --- 3 PLACES ± --- ± --- 2 PLACES ± 0.2 ± --- 1 PLACE ± --- ± --- ANGULAR ± 1 °	DRAWN BY    DATE JAKEEMW    2009/10/01 CHECKED BY    DATE CGTAN    2009/11/12 APPROVED BY    DATE SHLENI    2010/06/10	TITLE <b>DDR3 DIMM, 100MM PITCH 240 CKTS, VERTICAL T/H</b>			
	DRAFT WHERE APPLICABLE MUST REMAIN WITHIN DIMENSIONS	MATERIAL NO. <b>SEE TABLE</b>	MOLEX INCORPORATED		DOCUMENT NO. <b>SD-78543-001</b>	SHEET NO. <b>6 OF 7</b>	
	SIZE <b>A3</b>	THIS DRAWING CONTAINS INFORMATION THAT IS PROPRIETARY TO MOLEX INCORPORATED AND SHOULD NOT BE USED WITHOUT WRITTEN PERMISSION					

ASSEMBLY PART NO.	VOLTAGE KEY	HOUSING COLOR	LATCH COLOR	DIM 'P'	RECOMMENDED PCB THICKNESS	PLATING OPTION	PRODUCT SPECIFICATION
78543-0151	CENTRE (1.5V)	NATURAL (OFFWHITE)	NATURAL (OFFWHITE)	2.67	1.57	0.38 MICROMETER/ 15 MICROINCH MIN. GOLD ON CONTACT	PS-78543-001
78543-0153				3.00	2.18	2.54 MICROMETER/ 100 MICROINCH MIN. PURE TIN ON SOLDERTAILS	
78543-0152				3.18	2.36	1.27 MICROMETER/ 50 MICROINCH MIN. NICKEL UNDERPLATE	
78543-0161				2.67	1.57	0.76 MICROMETER/ 30 MICROINCH MIN. GOLD ON CONTACT	PS-78543-002
78543-0163				3.00	2.18	2.54 MICROMETER/ 100 MICROINCH MIN. PURE TIN ON SOLDERTAILS	
78543-0162				3.18	2.36	1.27 MICROMETER/ 50 MICROINCH MIN. NICKEL UNDERPLATE	
78543-0171				2.67	1.57	0.076 MICROMETER/ 3 MICROINCH MIN. GOLD ON CONTACT	PS-78543-003
78543-0173				3.00	2.18	2.54 MICROMETER/ 100 MICROINCH MIN. PURE TIN ON SOLDERTAILS	
78543-0172				3.18	2.36	1.27 MICROMETER/ 50 MICROINCH MIN. NICKEL UNDERPLATE	
78543-0181				2.67	1.57	0.51 MICROMETER/ 20 MICROINCH MIN. GOLD ON CONTACT	PS-78543-001
78543-0183				3.00	2.18	2.54 MICROMETER/ 100 MICROINCH MIN. PURE TIN ON SOLDERTAILS	
78543-0182				3.18	2.36	1.27 MICROMETER/ 50 MICROINCH MIN. NICKEL UNDERPLATE	

FORKLOCK UPDATED EC NO: S2010-0888 DRWN: JAKEEMEW 2010/04/22 CHKD: CTEH 2010/06/10 APPR: SHLENI 2010/06/13	QUALITY SYMBOLS	GENERAL TOLERANCES (UNLESS SPECIFIED)	DIMENSION STYLE <b>MM ONLY</b>	SCALE NTS	DESIGN UNITS METRIC	THIRD ANGLE PROJECTION
	$F_A=0$	mm INCH	DRAWN BY DATE	TITLE	DDR3 DIMM, 100MM PITCH 240 CKTS, VERTICAL T/H  MOLEX INCORPORATED	
	$F_C=0$	4 PLACES ± --- ± ---	JAKEEMEW 2009/10/01	CHECKED BY DATE		
	$F_P=0$	3 PLACES ± --- ± ---	CGTAN 2009/11/12	APPROVED BY DATE		
	2 PLACES ± 0.2 ± ---	1 PLACE ± --- ± ---	SHLENI 2010/06/10	MATERIAL NO.	DOCUMENT NO.	SHEET NO.
	ANGULAR ± 1 °	DRAFT WHERE APPLICABLE MUST REMAIN WITHIN DIMENSIONS	SEE TABLE	SD-78543-001		7 OF 7
2	REV	THIS DRAWING CONTAINS INFORMATION THAT IS PROPRIETARY TO MOLEX INCORPORATED AND SHOULD NOT BE USED WITHOUT WRITTEN PERMISSION				

## X-ON Electronics

Largest Supplier of Electrical and Electronic Components

*Click to view similar products for [IC & Component Sockets](#) category:*

*Click to view products by [Molex](#) manufacturer:*

Other Similar products are found below :

[714-43-102-31-012000](#) [0066-3-17-15-30-14-02-0](#) [0134-0-15-15-32-27-04-0](#) [614-DG5](#) [6527-0-00-15-00-00-03-0](#) [670](#) [672](#) [673](#) [712-93-120-41-001000](#) [714-93-104-31-018000](#) [8059-4G1-LF](#) [807-22-001-10-001101](#) [807-22-001-10-003101](#) [807-22-001-10-004101](#) [807-22-001-10-006101](#) [807-22-001-30-011101](#) [807-22-001-30-012101](#) [807-22-001-30-013101](#) [807-22-001-30-014101](#) [8-1437531-4](#) [8150-6P10](#) [833-93-034-10-001000](#) [835-43-014-10-001000](#) [851-41-006-10-001000](#) [851-43-008-20-001000](#) [851-43-014-20-001000](#) [851-93-006-20-001000](#) [851-93-010-20-001000](#) [852-10-026-10-001000](#) [853-43-020-10-001000](#) [86.010.0053.0](#) [116-43-306-41-003000](#) [116-43-308-41-007000](#) [116-87-308-41-007101](#) [PX-68LCC](#) [PX-84LCC](#) [121-13-318-41-001000](#) [121-13-320-41-001000](#) [121-13-308-41-001000](#) [123-43-314-41-801000](#) [123-43-420-41-001000](#) [123-43-636-41-001000](#) [123-87-320-41-001101](#) [122-13-316-41-001000](#) [123-13-624-41-001000](#) [123-43-306-41-001000](#) [123-43-322-41-801000](#) [123-43-428-41-001000](#) [123-43-624-41-001000](#) [12-3513-11](#)