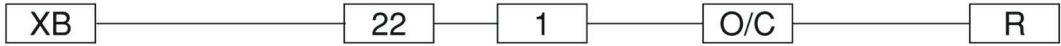
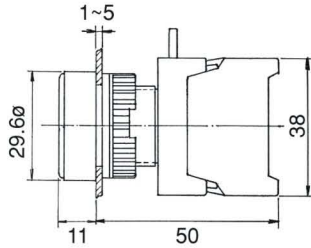


PUSH BUTTON SWITCHES, IP65

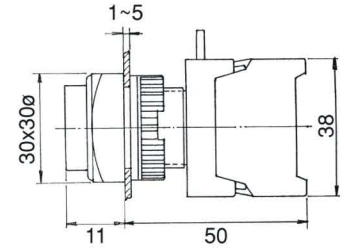


Type	Mounting hole	No. of contact	Type of contact	Lens colour
XB, GBF, PBF: Flat head XBL, GBL, PBL: Long head XBS: Square head XLS: Square long head XBG: Guard ring XGS: Guard ring square XE, EB, GEB, XES: Mushroom head 40ø BXE, BEB: Mushroom head 60ø LEB, GLEB: Latching head PF, EPF, GPF, GEPP: Push on-Push off	22 : 22ø 30 : 30ø	1 2 3 4	O: N/O(a) C: N/C(b) O/C: N/O+N/C 1a+1b	<ul style="list-style-type: none"> ● R: Red ● G: Green ● Y: Yellow ● BL: Blue ● BK: Black ○ W: White

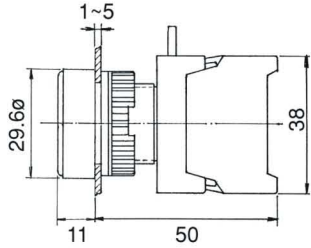
XB22-1/O



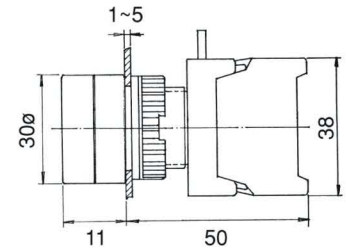
XLS22-1/O XLS22-1O/C
XLS22-1/C



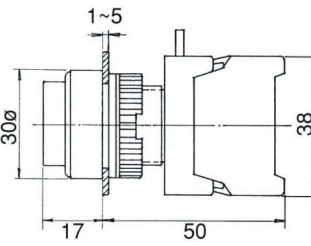
XB22-1O/C



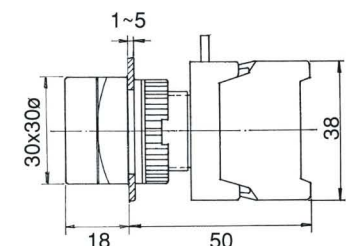
XBG22-1/O XBG22-1O/C
XBG22-1/C



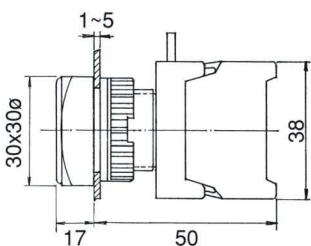
XBL22-1/O XBL22-1O/C
XBL22-1/C



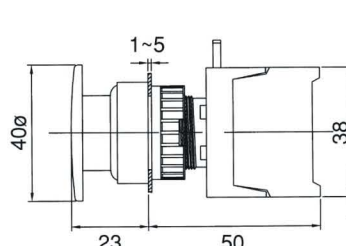
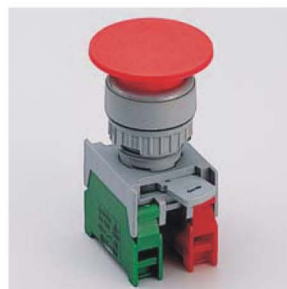
XGS22-1/O XGS22-1O/C
XGS22-1/C



XBS22-1/O XBS22-1O/C
XBS22-1/C



XE22-1/O XE22-1O/C
XE22-1/C



X-ON Electronics

Largest Supplier of Electrical and Electronic Components

Click to view similar products for [Pushbutton Switches](#) category:

Click to view products by [Auspicious](#) manufacturer:

Other Similar products are found below :

[LW1L-M1C10V-A](#) [LW2L-A1C20M-GD](#) [LW2L-M1C20M-A](#) [60324L](#) [M7E-HRN2](#) [67021K512](#) [67081K512X](#) [701PB580](#) [719-5504-000](#)
[MDPSSGLFS](#) [810KSV30B](#) [FLT 2U EE 01A](#) [MML21KA3ABK](#) [MML23KA3AC05K-001](#) [MML23KW3AA01W](#) [8418K2](#) [8646AB6X718UL](#)
[8646ABUL](#) [FSDWH](#) [9001KXRK](#) [9001T8BK](#) [9533CD4+U574+U4922](#) [1203MRA](#) [A22EM01S](#) [A595](#) [1202A6](#) [12037A2ULCSA](#) [1203A2UL](#)
[ABD122N-B](#) [1211390004](#) [ABN111-Y](#) [ABN400-R](#) [1211500044](#) [1211580012](#) [1212MRA](#) [1232A6NF](#) [RA3CSH6A](#) [1241.1183.7047](#)
[1241.2511](#) [1241.3428](#) [1223A2ULCSA](#) [1223MRA](#) [1232AX2119](#) [1241.1183.8000](#) [1241.1183.8029](#) [1241.2506](#) [1241.2606](#) [12MA6](#)
[1301940184](#) [RELBARF6X10\(PLASTIC\)](#)