



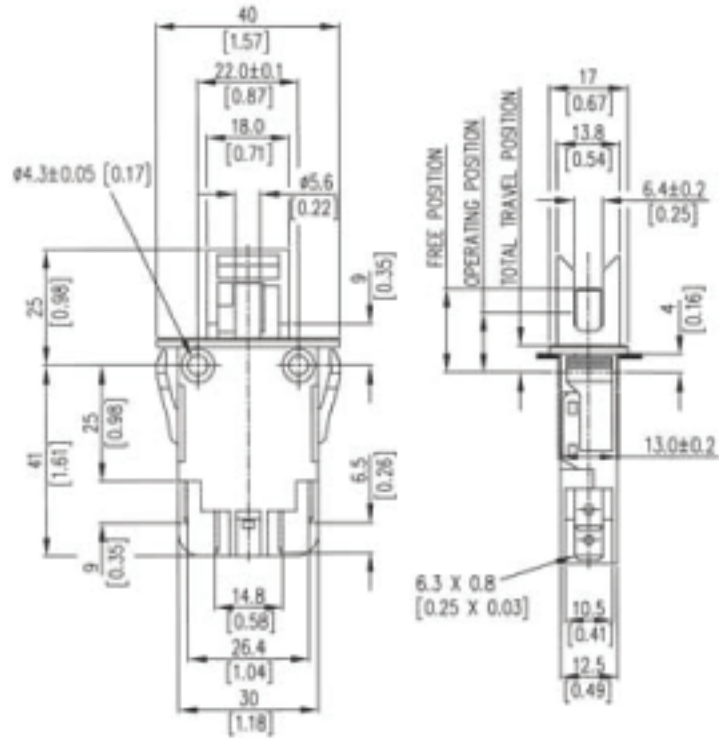
## XT

<b>Type</b>	<ul style="list-style-type: none"> <li>• Switches</li> </ul>
<b>Product type</b>	<ul style="list-style-type: none"> <li>• Burgess Double Break Momentary Switch</li> </ul>
<b>Typical markets</b>	<ul style="list-style-type: none"> <li>• business machines</li> <li>• leisure &amp; fitness</li> <li>• building automation &amp; security</li> <li>• industrial equipment &amp; automation</li> <li>• distribution</li> </ul>
<b>Typical applications</b>	<ul style="list-style-type: none"> <li>• vending machines</li> <li>• gaming machines</li> <li>• copiers</li> <li>• printers</li> <li>• industry general</li> <li>• local catalog distributors</li> </ul>
<b>Dimensions</b>	<ul style="list-style-type: none"> <li>• 30 x 32 x 12 mm</li> </ul>
<b>Characteristics</b>	<ul style="list-style-type: none"> <li>• 8 mm contact gap, creepage and clearance distances</li> <li>• double break contacts</li> </ul>
<b>Rating</b>	<ul style="list-style-type: none"> <li>• 400 VAC, 16.5 A max.</li> </ul>
<b>Actuators</b>	<ul style="list-style-type: none"> <li>• shrouded plunger</li> <li>• optional key</li> <li>• plain plunger</li> </ul>

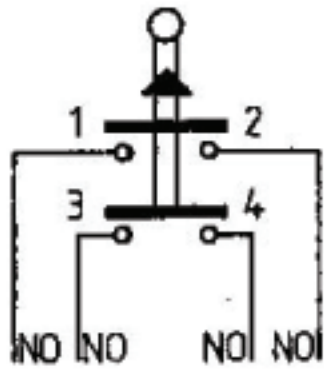


- Approvals/Quality**
- ENEC
  - UL
  - cUL
  - CSA

**Dimensions**



**Circuits**



**Performance**

**Preferred range**

Partnumber	Terminal	Actuator	Electrical rating @

			ENEC	UL/CSA
<u>XTD22PZ1</u>	faston 6.3 x 0.8 mm	plunger	400 VAC 16.5 A	250 VAC 15.5 A
<u>XTD22AZ1</u>	faston 6.3 x 0.8 mm	shrouded plunger	400 VAC 16.5 A	250 VAC 15.5 A





## XTD22AZ1

<b>Dimensions</b>	30 mm
<b>Dimensions</b>	32 mm
<b>Dimensions</b>	12 mm
<b>Terminal</b>	faston 6.3 x 0.8 mm
<b>Circuit</b>	NO
<b>Protection</b>	IP40
<b>Actuator</b>	shrouded plunger
<b>Contacts</b>	AgNi
<b>Electrical rating ENEC</b>	400 VAC
<b>Electrical rating UL/CSA</b>	250 VAC
<b>Actuating force</b>	3.8 Nm
<b>Release force</b>	5.8 N
<b>Free position (FP)</b>	18 mm
<b>Operating position (OP)</b>	13 mm
<b>Total travel position (TP)</b>	10 mm
<b>Overtravel</b>	3 mm

## X-ON Electronics

Largest Supplier of Electrical and Electronic Components

*Click to view similar products for [Pushbutton Switches](#) category:*

*Click to view products by [Saia-Burgess](#) manufacturer:*

Other Similar products are found below :

[LW1L-M1C10V-A](#) [LW2L-A1C20M-GD](#) [LW2L-M1C20M-A](#) [60324L](#) [M7E-HRN2](#) [67021K512](#) [67081K512X](#) [701PB580](#) [719-5504-000](#)  
[MDPSSGLFS](#) [810KSV30B](#) [MML21KA3ABK](#) [MML23KA3AC05K-001](#) [MML23KW3AA01W](#) [8418K2](#) [8646AB6X718UL](#) [8646ABUL](#)  
[FSDWH](#) [9001KXRK](#) [9001T8BK](#) [9533CD4+U574+U4922](#) [1203MRA](#) [A22EM01S](#) [A595](#) [1202A6](#) [12037A2ULCSA](#) [1203A2UL](#) [ABD122N-](#)  
[B](#) [1211390004](#) [ABN111-Y](#) [ABN400-R](#) [1211500044](#) [1211580012](#) [1212MRA](#) [1232A6NF](#) [RA3CSH6A](#) [1241.1183.7047](#) [1241.2511](#)  
[1241.3428](#) [1223A2ULCSA](#) [1223MRA](#) [1232AX2119](#) [1241.1183.8000](#) [1241.1183.8029](#) [1241.2506](#) [1241.2606](#) [12MA6](#) [1301940184](#)  
[RELBARF6X10\(PLASTIC\)](#) [13435AG](#)