

## M12 Field Attachable Connectors (Stainless Steel Hardware)

RSCWN | RKCWN

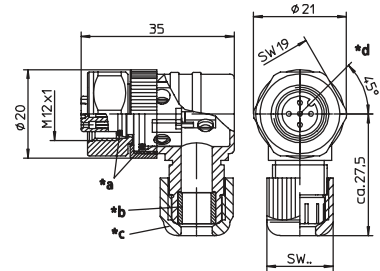


### Male, 4- and 5-Pole (90°)

Field attachable connector, M12 male right angle connector, 4- and 5-pole with stainless steel hexagon threaded joint, assembling with screw terminals.

– especially designed for use in food processing equipment –

RSCWN



- \*a O-Ring
- \*b gasket
- \*c cap nut
- \*d insert 90° rotatable

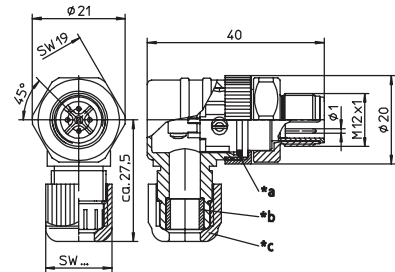


### Female, 4- and 5-Pole

Field attachable connector, M12 female right angle connector, 4- and 5-pole with stainless steel hexagon threaded joint, assembling with screw terminals.

– especially designed for use in food processing equipment –

RKCWN

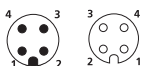


- \*a O-Ring
- \*b gasket
- \*c cap nut

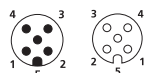
## Pin Assignments

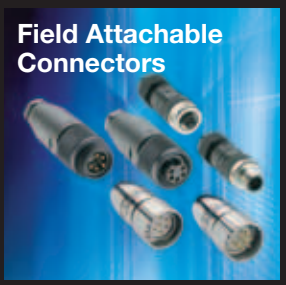
Face Views / M12, Male / Female

4 pole



5 pole





# Be Certain with Belden

## M12 Field Attachable Connectors (Stainless Steel Hardware)

RSCWN | RKCWN

### Technical Data

#### Environmental

Degree of protection IP 67 / NEMA 6P  
 Operating temperature range -25°C (-13°F) / +85°C (+185°F)

#### Mechanical

Housing / Molded body PBT  
 Insert PBT  
 Contact CuZn, pre-coppered, CuSnZn  
 8-poles pre-nickeled, gold-plated  
 Receptacle shell stainless steel  
 O-ring FKM  
 Mode of connection Screw terminals  
 Connectable conductor 4-5 poles max. 0.75 mm<sup>2</sup>  
 8 poles max. 0.50 mm<sup>2</sup>

#### Electrical

Contact resistance ≤ 5 mΩ  
 Nominal current at 40°C 4-5 poles 4 A  
 8 poles 2 A  
 Nominal voltage 4 poles 240 V  
 5 poles 60 V  
 8 poles 30 V  
 Rated voltage 4 poles 250 V  
 5 poles 63 V  
 8 poles 36 V  
 Test voltage 4 poles 2.0 kV eff. / 60 s  
 5 poles 1.5 kV eff. / 60 s  
 8 poles 0.9 kV eff. / 60 s  
 Insulation resistance > 109 Ω  
 Pollution degree 3

Part Number	Pins	Cable Diameter Range	Characteristics
<b>Male</b>	<b>Female</b>		
RSCWN 4/7	RKCWN 4/7	4	Ø 3.0-6.5 mm /SW 15
RSCWN 4/9	RKCWN 4/9		Ø 4.0-8.0 mm /SW 19
RSCWN 5/7	RKCWN 5/7	5	Ø 3.0-6.5 mm /SW 15
RSCWN 5/9	RKCWN 5/9		Ø 4.0-8.0 mm /SW 19



## X-ON Electronics

Largest Supplier of Electrical and Electronic Components

*Click to view similar products for [Standard Circular Connector](#) category:*

*Click to view products by [Lumberg](#) manufacturer:*

Other Similar products are found below :

[C015 10F006 001 1](#) [5M2530B10P](#) [600247N007](#) [600259N006](#) [600273N007](#) [600432N009](#) [6280-2PG-519](#) [6280-3PG-311](#) [6280-3SG-311](#)  
[6280-7SG-3DC](#) [6280-7SG-522](#) [6282-5PG-311](#) [6282-6PG-519](#) [6282-8SG-311](#) [6283-11](#) [6283-15](#) [6290](#) [6293](#) [6382-2PG-311](#) [6382-2PG-3DC](#)  
[6382-2SG-321](#) [6382-2SG-3DC](#) [6382-4SG-516](#) [67-03E20-37P](#) [681-PMG](#) [CXS3102A14S2P](#) [CXS3102A181S](#) [CXS3106A14S6S](#)  
[D38999/20FC8SA L/C](#) [MB12P-1](#) [MB12R-6](#) [7251-2PG-300](#) [7251-2SG-300](#) [7251-4PG-300](#) [7251-4SG-300](#) [7251-5PG-300](#) [7251-5SG-300](#)  
[7251-6SG-300](#) [7251-7PG-300](#) [7251-8PG-300](#) [7271-6SG-300](#) [7282-3PG-300-CH3](#) [73000005663](#) [75-190011-03P](#) [75-190216-08S](#) [75-190218-](#)  
[10P](#) [75-214636-52P](#) [75-474118-10P](#) [75-474211-03P](#) [75-474218-19S](#)