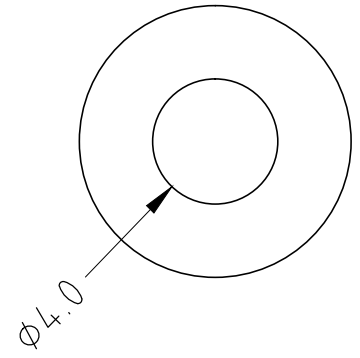
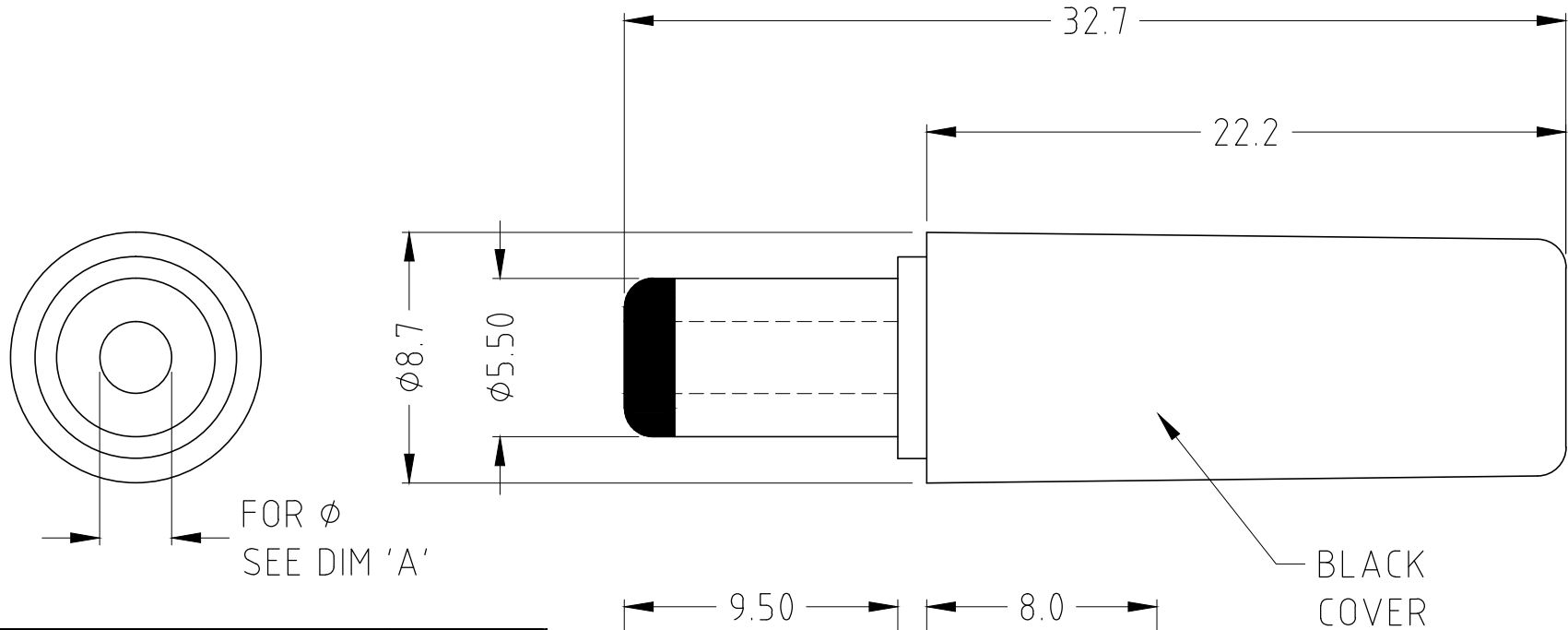
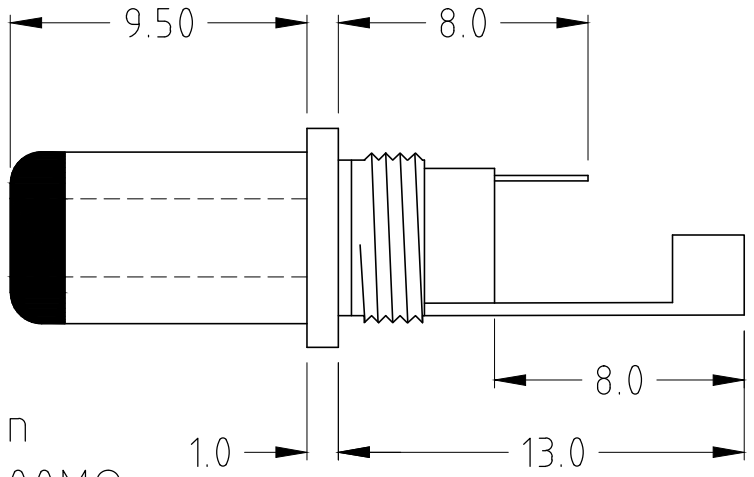


| ISS. | AMEND | DATE |
|------|------------------------|----------|
| 1 | 1st DRAWN | 27/07/90 |
| 2 | NOTE * | 02/05/91 |
| 3 | C MODELS ADD | 01/02/94 |
| 4 | F ADD, C MOD DEL | 25/04/96 |
| 5 | DIM D AMEND | 06/02/07 |
| 6 | DCPP3 B DIM ERROR | 19/02/07 |
| 7 | UPDATE TABLE+VIEWS | 04/09/13 |
| 8 | ALL OTHER VARIANTS DEL | 15/06/15 |



| PART No. | MODEL | DIM A |
|----------|-------|-------|
| FC68147 | DCPP1 | Ø2.1 |
| FC681471 | DCPP2 | Ø2.5 |



Nominal Rating: 12V 5A (60VA)
 Dielectric Strength: AC 500V/1min
 Insulation Resistance: DC 500V/100MΩ

| RoHS COMPLIANT | |
|-------------------------|--------|
| TOLERANCE | |
| NO DEC. PLACE | ± 0.50 |
| 1 DEC. PLACE | ± 0.25 |
| 2 DEC. PLACE | ± 0.10 |
| HOLE Ø | ± 0.10 |
| ANGLES | ± 1/2° |
| UNLESS OTHERWISE STATED | |
| DO NOT SCALE | |

Cliff Electronic Components Ltd.
 76 Holmethorpe Avenue, Holmethorpe Industrial Estate,
 Redhill, Surrey, RH1 2PF, England, UK
 Tel: 01737-771375 Fax: 01737-766012 Website: www.cliffuk.co.uk

DIMENSIONS IN MILLIMETERS UNLESS OTHERWISE STATED. WORK TO DIMENSIONS. REMOVE ALL BURRS. IF IN DOUBT ASK.
 MATERIAL: ABS / POM / PBT / BRASS
 FINISH: AS MOULDED / Ni PLATED

3rd ANGLE PROJECTION: TITLE: DC CONNECTOR DCPP (FLANGED)

THE CONTENTS OF THIS DOCUMENT MUST NOT BE COPIED OR DISCLOSED TO A 3rd PARTY WITHOUT WRITTEN PERMISSION OF CLIFF UK. © 1990

DRAWN: C.A.M.J.

APPROVED: R.W.T.

DRWG. No. **FC68147**

FORM: A4DRWGH

X-ON Electronics

Largest Supplier of Electrical and Electronic Components

Click to view similar products for [DC Power Connectors](#) category:

Click to view products by [Cliff](#) manufacturer:

Other Similar products are found below :

[1600206-1](#) [163-0301-EX](#) [163-0302](#) [163-0308-EX](#) [163-0310-EX](#) [163-1061-EX](#) [163-1100-EX](#) [163-4024](#) [163-4117-EX](#) [163-4118-EX](#) [163-5005-E](#) [163-7421](#) [163-MJ22-EX](#) [171-0721-EX](#) [171-0725-EX](#) [171-3118-EX](#) [171-3210-E](#) [171-3221-EX](#) [171-3222-EX](#) [171-A1326-EX](#) [173-23507-ST-EX](#) [173-5521TIP-EX](#) [173-6330TIP-EX](#) [KLDVX-SMT-02-ATR](#) [KLDX-0201-AHT-1](#) [KLDX-0202-AHT](#) [KLDX-SMT-0202-BP](#) [KLDX-SMT-0202-BPTR](#) [163-0179-EX](#) [163-0307-E](#) [163-0309-EX](#) [163-4007-EX](#) [163-4015-EX](#) [163-4025](#) [163-4119-E](#) [163-4303-E](#) [16PJ101-EX](#) [171-0702-EX](#) [171-0722-E](#) [171-0726-EX](#) [171-2122-EX](#) [171-3216-EX](#) [171-3218-EX](#) [171-3219-EX](#) [171-3220-EX](#) [171-7391](#) [173-3413-ST-EX](#) [173-4017-ST-EX](#) [RAPCBRK](#) [K596](#)