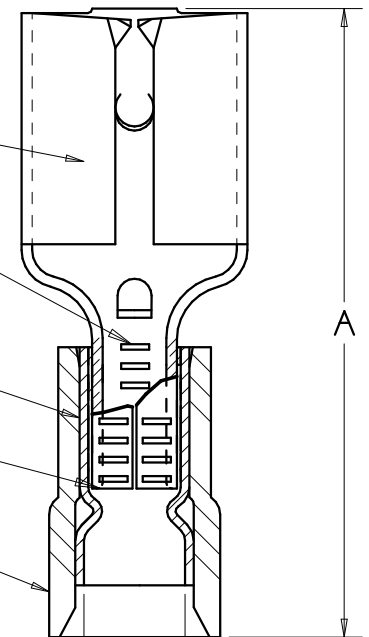
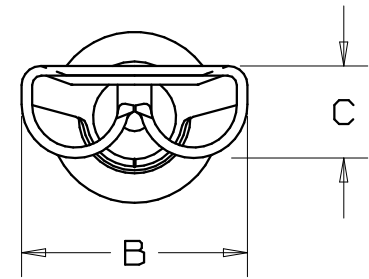


PART NUMBER		TAB SIZE	WIRE RANGE AWG (mm ²)	HOUSING COLOR	MAX INSUL DIA	DIMENSIONS in		
PREFIX	PKG					A ± 0.03 (0.8)	B ± 0.01 (0.3)	C ± 0.01 (0.3)
DNF18-206	-C -M	.187/.205 X .020 (4.8/5.2 X 0.5)	22-18 (.38-1.0)	RED	.137 (3.48)	.76 (19.3)	.25 (6.4)	.12 (3.0)
DNF14-206	-C -M	.187/.205 X .020 (4.8/5.2 X 0.5)	16-14 (1.5-2.5)	BLUE	.162 (4.11)	.76 (19.3)	.25 (6.4)	.12 (3.0)



NOTES:

- UL LISTED AND CSA CERTIFIED FOR:
 - 300V. MAX. VOLTAGE RATING
 - STRANDED COPPER WIRE ONLY
 - 194° F (90° C) MAX. TEMP. RATING
- PACKAGE QTY: STD. PKG. -C= 100
BULK PKG. -M= 1000
- MATERIAL:
 - STAMPING: .016 (0.41) THK BRASS, TIN PLATED
 - SLEEVE: BRASS, TIN PLATED
 - HOUSING: NYLON
- WIRE STRIP LENGTH $9/32 \begin{matrix} +1/32 \\ -0 \end{matrix}$ (7.1 $\begin{matrix} +0.8 \\ -0 \end{matrix}$)
- INITIAL INSERTION FORCE - 12 LB. (53 N) MAX
INITIAL WITHDRAWAL FORCE - 12 LB. (53 N) MAX
6 LB. (27 N) MIN
- INSTALLATION TOOLS:
 - UL LISTED AND CSA CERTIFIED: CT-500
 - PANDUIT APPROVED: CT-100, CT-160, CT-260, CT-400, CT-460 (DNF14-187 ONLY), CT-550, CT-1550, CT-1551.
- DIMENSIONS IN BRACKETS ARE IN MILLIMETERS OR mm²



LISTED
20H3
E78522



CERTIFIED
LR31212

MAX WIRE
INSUL DIA

A41586_03

03	2/07	DAW	DAW	ADDED DUAL TAB SIZE INFORMATION	TRO0210	LCA	TRO	<p>TINLEY PARK, ILLINOIS</p> <p>NYLON INSULATED FEMALE DISCONNECT, FUNNELED WIRE ENTRY (.206 SERIES)</p>
02	7/03	KLFU	SKB	ADD INTERNAL SERRATIONS REMOVED SLOTS	12453	SKB	TRO	
01	1/01	RM	SKB	FILESPEC WAS N41586AA_PCD_00	08933	JAC	CCH	
00	1/96	ED		RELEASED	03871			
REV	DATE	BY	CHK	DESCRIPTION	ECN #	CUST	PM	DRAWN BY: EJD CHK'D: SCALE: NONE DRAWING NO.: A41586

X-ON Electronics

Largest Supplier of Electrical and Electronic Components

Click to view similar products for [Terminals](#) category:

Click to view products by [Panduit](#) manufacturer:

Other Similar products are found below :

[HT-13-10](#) [71M-250-32-NB](#) [01-2065-1-0216](#) [00581P0075](#) [M10-10RX](#) [M10BCK](#) [60205-1](#) [604200-1](#) [60598-1-CUT-TAPE](#) [60617-1-C](#) [60873-1](#) [M14-516R/SK](#) [M14-6RSX](#) [M18-10FLX](#) [M18-8FBX](#) [M18-8R/LX](#) [M18BCK](#) [61314-6-C](#) [61-S](#) [61-SN-A](#) [62-NBM-A](#) [63-S](#) [640179-1](#) [640917-2-CUT-TAPE](#) [6501550002](#) [66107-2-C](#) [66107-4-C](#) [696683-1](#) [696834-1](#) [696861-1](#) [696931-1](#) [696999-1](#) [M8-516RK](#) [M86700006](#) [MA250DMFMX-A](#) [701-2007](#) [701-2307](#) [701-7761-03](#) [70F-110-32-PB](#) [718-N-A](#) [71M-187-20-NBL](#) [71M-250-32-NBL](#) [72F-187-20-NBL](#) [72M-250-32-NBL](#) [7310](#) [73F-250-32](#) [73F-250-32-NBL](#) [73F-250-32-NL](#) [F14-10C](#) [F-1M](#)