

FCI CONFIDENTIAL

FCI CONFIDENTIAL

DRAWING NO.
FE206019

BURNDY CATALOG NO. SKIVE, TIN PLATE SHORT BARREL	FIG NO.	B ±.020	C	E ±.010	H ±.060	K ±.010	L	N ±.025	P ±.030	R REF.	T REF.	Y MIN.	CHAM. DIA. ±.015	CONDUCTOR SIZE (LETTERING INFO.)	BURNDY CATALOG NO. NO SKIVE, LEAD PLATE SHORT BARREL
YAV6CL-2TC10-FX	1	.500	.452	.625	-.781	.210	1.936	.250	.725	-.042	-.085	.901	.255	#6 (61/24) BLUE DIE 374/7	YAG6CL-2TC10-LD
YAV6CL-2TC10-FX-45	2		.452 ±.015	.625	.781	.210	1.912	.250	.725	.042	.085	.901			YAG6CL-2TC10-LD-45
YAV6CL-2TC10-FX-90	3		.452	.625	.910	.210	1.394	.250	.725	.042	.085	.901			YAG6CL-2TC10-LD-90
YAV6CL-2TC10E4-FX	1		.452	.688	-.781	.210	1.999	.250	.725	-.042	-.085	.964			YAG6CL-2TC10E4-LD
YAV6CL-2TC10E4-FX-45	2		.452 ±.015	.688	.781	.210	1.975	.250	.725	.042	.085	.964			YAG6CL-2TC10E4-LD-45
YAV6CL-2TC10E4-FX-90	3	.500	.452	.688	.910	.210	1.457	.250	.725	.042	.085	.964			YAG6CL-2TC10E4-LD-90

REV.	DATE	DESCRIPTION	ECO	BY	C'K'D.
A	07/30/07	UPDATE TO NEW FORMAT & CHG. CSC TO V6C IN MATERIAL CALL OUT, CHG. O.D. TO .312, FIG. 1	14580	RB	PL

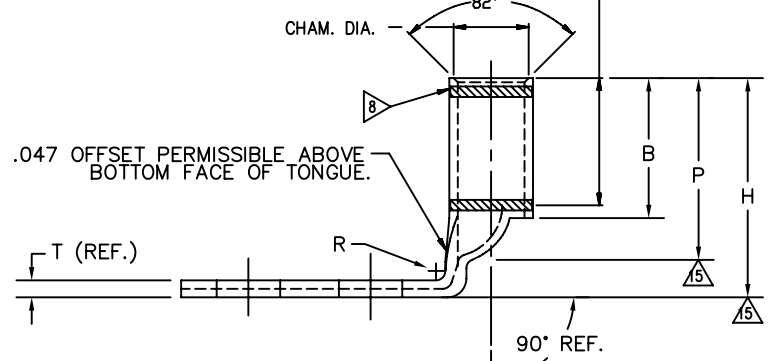
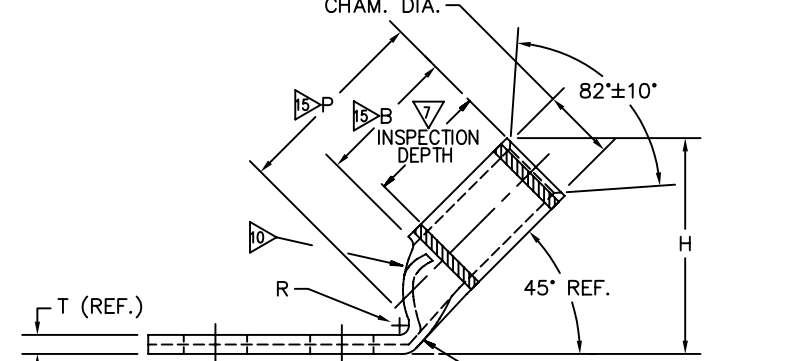
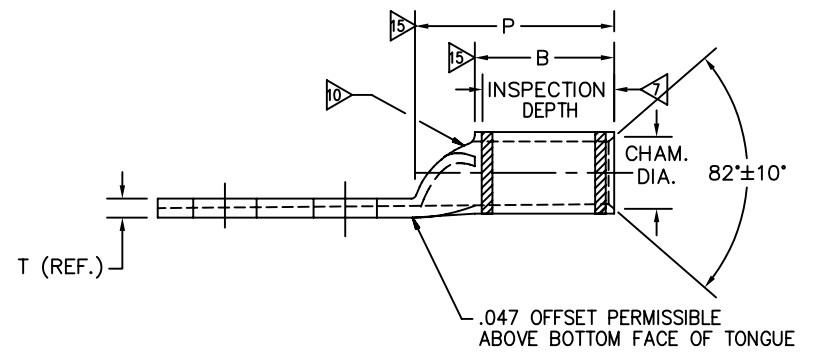
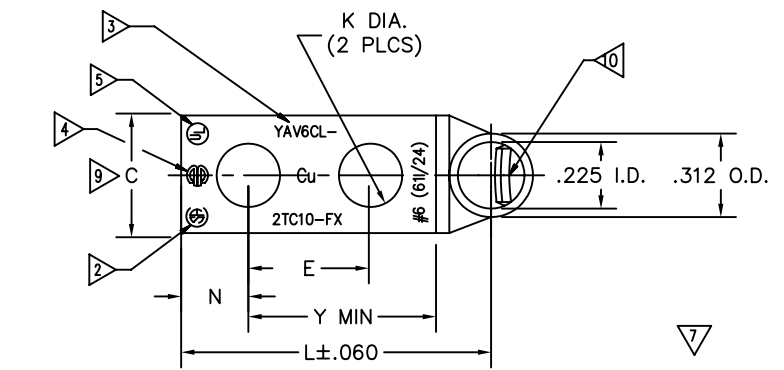
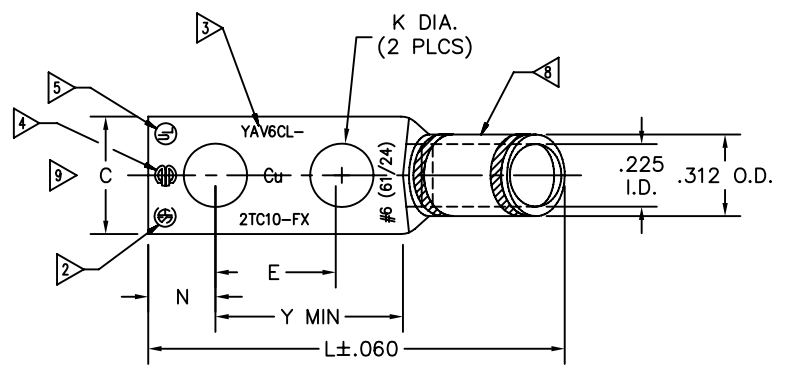
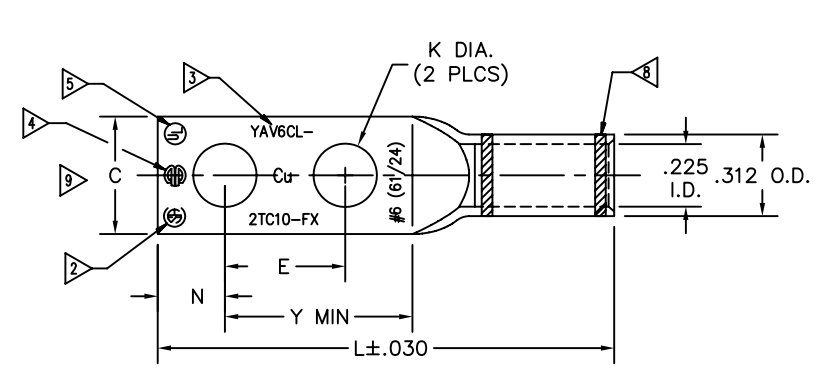


FIG. 1

FIG. 2

FIG. 3

NOTES:

- BREAK ALL SHARP EDGES UNLESS OTHERWISE SPECIFIED.
- 'CSA' SYMBOL PER INTERNAL SPECIFICATION L4591. (OMIT FROM "U" PARTS)
- ALL LETTERING TO BE METAL STAMPED.
- BRAND NAME PER INTERNAL SPEC. L4116, TYPE 3A.
- 'UL' SYMBOL PER INTERNAL SPECIFICATION L4219. (OMIT FROM "U" PARTS)
- FINISH HARDNESS : RF 50 MAX. APPLIES TO BARREL ONLY. TONGUE HARDNESS IS RESULTANT.
- ACCEPTABLE LIMITS OF INSIDE AND OUTSIDE DIAMETER OVALIZATION PER SPECIFICATION D4131. INSPECTION DEPTH OF BARREL I.D. TO BE .470 (INSPECTION PIN DIA. = .218).
- COLOR CODE INK STAMPING PER FD206275. YAV6CL-2TC10E4- TO HAVE BLUE DOT ON STUFF.
- MAXIMUM ACCEPTABLE TONGUE WIDTH ACROSS THE "K" HOLE OR AT THE END OF TONGUE EQUALS MAXIMUM SPECIFIED "C" DIMENSIONS + .020
- SEE CATALOG NUMBER ON TABLE FOR CONNECTORS WITH SKIVE OR NO SKIVE (CLOSED).
- TONGUE STAMPING MUST INCLUDE COMPLETE CATALOG NO. (EXCLUDING -45 AND -90 ON BENT CONNECTORS), CORPORATE IDENTIFIER, UL AND CSA LOGOS AND WIRE SIZE DESIGNATION. IN ADDITION, IF SPACE PERMITS, ADD LETTERS "Cu" AFTER WIRE SIZE, NAVY WIRE SIZE, DIE INDEX NO. AND COLOR CODE.

- SKIVE DETAIL PER INTERNAL SPEC. D209 LINE NUMBER 5
- ELECTRO TIN PER INTERNAL SPEC. F4383, TYPE T3.
- LEAD PLATE THICKNESS .0015-.0030.
- THIS DIMENSION IS MEASURED AT THE TOP OF THE BARREL ONLY.
- FOR "U" (UNDRILLED) PARTS, USE D MIN = N MAX + Y MIN.

"C TOL" DIMENSION FOR CLOSED TRANSITION PARTS:
±.015 BECOMES +.015/-0.020; ±.020 BECOMES +.020/-0.032;
±.030 BECOMES +.030/-0.045. APPLIES BETWEEN REAR EDGE OF REAR HOLE AND TRANSITION ONLY.

YAG-L-FX CATALOG NUMBERS: SAME AS YAG-L-LD NUMBERS ABOVE, EXCEPT TIN PLATED PER NOTE 13.

GENERAL NOTES:		LINEAR MEASURE: [mm], IN [mm]	- MATERIAL -	HYLUGS™ #6 (61/24)
1. ALTHOUGH THIS DRAWING MAY ORIGINALLY HAVE BEEN DEVELOPED TO SCALE, THE USE OF ELECTRONIC DESIGN AND REPRODUCTION TECHNIQUES MAY RESULT IN THIS COPY NOT BEING TO SCALE. THEREFORE, DO NOT SCALE THIS PRINT.		THIRD ANGLE PROJECTION	COMP. COPPER TUBING PER INTERNAL SPEC. M4100	ITEM NO: ---
2. THE DIMENSIONS, TOLERANCES AND SPECIFICATIONS OF THIS DESIGN ARE GIVEN TO PROVIDE A DEFINITION OF THE FUNCTIONAL REQUIREMENTS FOR THIS COMPONENT OR PRODUCT. ANY PART NOT MEETING THESE REQUIREMENTS SHALL BE CONSIDERED AS SCRAP.		(UNLESS OTHERWISE SPECIFIED)	INIT HARD: INTERNAL SPEC. M4100	CAT NO: YAV6CL- & YAG6CL- (TABLE)
THIS DRAWING AND/OR SPECIFICATION IS THE PROPERTY OF FCI USA, INC., MANCHESTER NH 03109 USA. IT IS ISSUED IN STRICT CONFIDENCE AND SHALL NOT BE REPRODUCED, OR COPIED, OR DISCLOSED TO OTHERS, OR USED AS THE BASIS FOR THE MANUFACTURE OR SALE OF APPARATUS WITHOUT THE PERMISSION OF THE OWNER.		NO. OF DECIMAL PLACES	FINAL HARD: SEE NOTE 6	SCALE: NTS
ONE PLACE	±0.5	---	FINISH: SEE TABLE 3-14	DRAWN BY: DAN D. 04/16/90
TWO PLACE	±0.13 ±0.02	---	SIZE, FORM & TOL. TUBING (DC10581) CAT # V6C	CHECKER: N FERNAND 08/27/90
THREE PLACE	±0.05 ±0.005	---	---	DSN APPVL: K. WOO 05/17/90
ANGLES ±0°30'		---	---	MFG APPVL: A. BECK 05/17/90
---		---	---	QC APPVL: F.R.R. 05/17/90
---		---	---	MKT APPVL: ---
---		---	---	PROD FAM: ---
---		---	---	PROJECT #: ---
---		---	---	DOCUMENT TYPE: Production
---		---	---	REL LEVEL: AutoCAD
---		---	---	DRAWING NO FE206019
---		---	---	REV A
---		---	---	SHEET 3 OF 19

X-ON Electronics

Largest Supplier of Electrical and Electronic Components

Click to view similar products for [Terminals](#) category:

Click to view products by [FCT Electronics](#) manufacturer:

Other Similar products are found below :

[HT-13-10](#) [71M-250-32-NB](#) [01-2065-1-0216](#) [00581P0075](#) [M10-10RX](#) [M10BCK](#) [60205-1](#) [604200-1](#) [60598-1-CUT-TAPE](#) [60617-1-C](#) [60873-1](#) [M14-516R/SK](#) [M14-6RSX](#) [M18-10FLX](#) [M18-8FBX](#) [M18-8R/LX](#) [M18BCK](#) [61314-6-C](#) [61-S](#) [61-SN-A](#) [62-NBM-A](#) [63-S](#) [640179-1](#) [640917-2-CUT-TAPE](#) [6501550002](#) [66107-2-C](#) [66107-4-C](#) [696683-1](#) [696834-1](#) [696861-1](#) [696931-1](#) [696999-1](#) [M8-516RK](#) [M86700006](#) [MA250DMFMX-A](#) [701-2007](#) [701-2307](#) [701-7761-03](#) [70F-110-32-PB](#) [718-N-A](#) [71M-187-20-NBL](#) [71M-250-32-NBL](#) [72F-187-20-NBL](#) [72M-250-32-NBL](#) [7310](#) [73F-250-32](#) [73F-250-32-NBL](#) [73F-250-32-NL](#) [F14-10C](#) [F-1M](#)