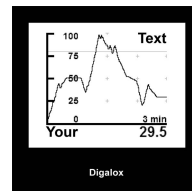
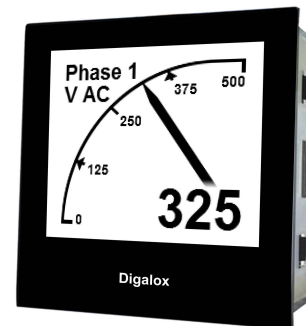


Digalox DPM72-AVP

Graphical DIN-panelmeter for Voltage and Ampere with USB interface



Description

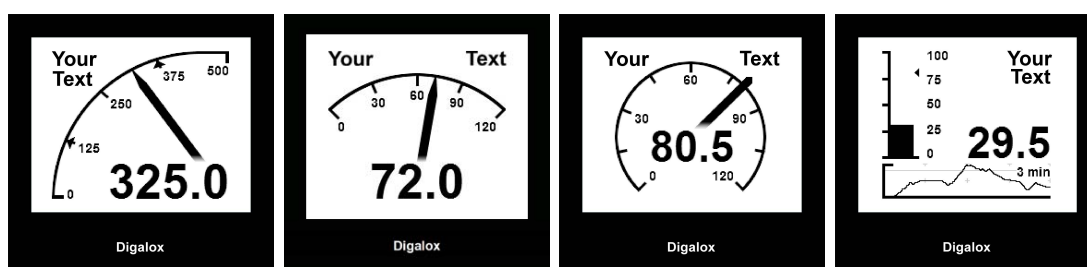
Graphical measuring instrument which unites the benefits of an analogue display with the accuracy of a digital instrument. The common measure modes (Volt AC/DC, Ampere, frequency, analog signal 0/2 to 10 Volts and 5A current transformer) are supported. Scale-endpoint of the indicator as well as scaling of the analog signal and current transformer measurement can be adjusted freely via the DIP-switch, alternatively there is an option for automatic adaption of the scale-endpoint. The unit can be switched between Volt and Ampere measurement via an external switch. Minimum and maximum values are recorded and can be displayed optionally using an

external switch. Measured values are recorded over a timespan of 3 minutes to 14 days. The timebase as well as the display of the measuring history can be activated by an external switch. The following parameters can be adjusted using the USB-Software: Scale-endpoint, scale-caption, display-style (pointer, tachometer, bargraph and more), splash display, thresholds for alarm output, hysteresis and more. Recorded measurement values can be read as well as a continuous transmission of the actual measuring value enabled. Using the software, values can be viewed, recorded and be exported as CSV.

Features

- Graphic display 16 grey levels with white backlight
- Pointer and digital display
- USB interface
- Adjustable scale-endpoint
- Recording of measurement over up to 14 days
- Alarm outputs with adjustable thresholds, galvanically isolated
- User splash display
- Different display styles, e.g. tachometer, bargraph, timebased view
- Transmission of measure value
- Supply 10-30V AC/DC or USB, galvanically isolated
- Accuracy 1% (0,5%) true RMS
- Windows software for individual configuration and measure value recording

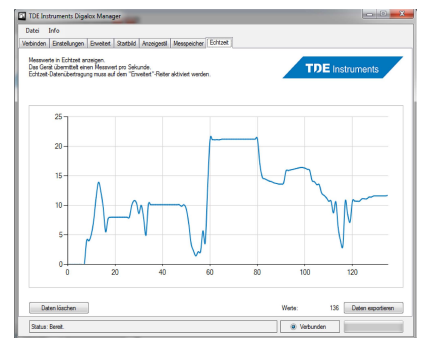
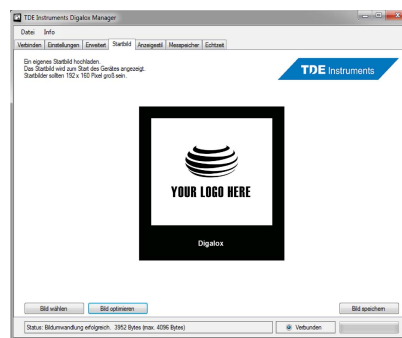
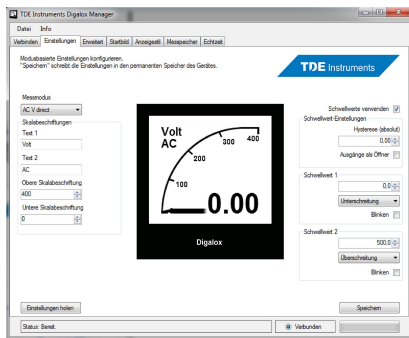
Adjustable display styles



Software

The corresponding free software enables the individual configuration of the meter. Via software the measured values can be read from the memory, as well as continuous data transmission enabled.

Using the software, values can be viewed, recorded and be exported as CSV.



Specification

Supply:
 10-30V AC/DC
 Display:
 LCD graphic display 192x160 pixels
 Measuring range voltage:
 AC 0-500V
 DC +/-500V
 DC 0/2-10V DC for analog signal
 Accuracy Voltage:
 1% (0,5%)
 Measuring range Ampere:
 AC 0-10A
 AC 5A for current transformer
 DC +/-10A
 Accuracy Ampere:
 1% (0,5%)
 Measuring range frequency:
 10-500Hz

Accuracy frequency:
 0,1Hz
 Recording of measurement:
 3 Min. to 14 days
 Alarm outputs:
 2 optocouple outputs max. 30V, 50mA
 Operating temperature:
 0°C to +50°C
 Storage temperature:
 -20°C bis +70°C
 Front panel:
 72 mm x 72 mm
 Panel cut out:
 68 mm x 68 mm
 Fixation:
 Bracket
 Protection front:
 IP65

Other Instruments of Digalox DPM72 series

Digalox DPM72-AV

Graphical DIN-panelmeter for Voltage and Ampere.



Digalox DPM72-PP

Graphical DIN-panelmeter for DC shunt measurement and analog signal with USB interface.



X-ON Electronics

Largest Supplier of Electrical and Electronic Components

Click to view similar products for [Digital Panel Meters](#) category:

Click to view products by [TDE](#) manufacturer:

Other Similar products are found below :

[01.098.1658.1](#) [04.630.1080.0](#) [16-310-09](#) [20035-09](#) [20036-17](#) [20046-20](#) [20078-20](#) [20125-21](#) [20181-15](#) [20182-23](#) [25.320.5053.0](#)
[25.325.3253.1](#) [25.325.4253.1](#) [25.330.0453.1](#) [25.350.0553.0](#) [25.350.3453.1](#) [25.394.3653.1](#) [25.521.3253.0](#) [28000-03](#) [28006-01](#) [28060-16](#)
[28061-01](#) [28061-03](#) [28112-16](#) [2864011](#) [2907944](#) [2907945](#) [2907946](#) [2907953](#) [2908285](#) [2908286](#) [2908301](#) [2908302](#) [2A09](#) [2B031](#)
[2CMA100166R1000](#) [2CMA103575R1000](#) [3020-01096-0](#) [3020-01097-0](#) [3020-01098-0](#) [3020-01099-0](#) [3020-01100-0](#) [3020-01101-0](#) [3020-](#)
[01102-0](#) [3020-01103-0](#) [3020-01104-0](#) [3020-01105-0](#) [3020-01106-0](#) [3020-01107-0](#) [3020-01108-0](#)