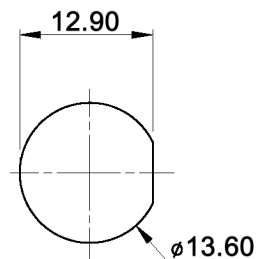
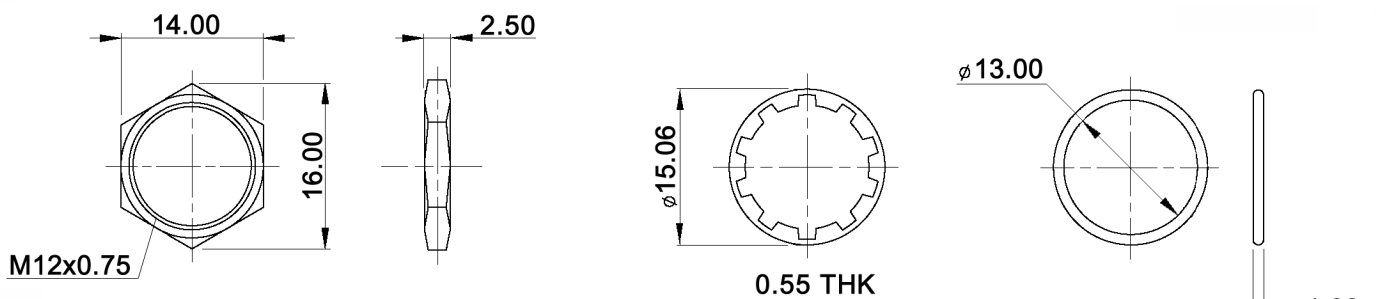


PANEL CUT-OUT



HARDWARE:



Tolerances: 0.00: ±0.25mm 0.0: ±0.40mm		Date	Name
		03/09	dr
Rating, electrical life	02/13	dr	knitter-switch
Dimensions	06/10	dr	
Modifications	Date	Name	

DPW 1 AG-x

30 17 62

Page

1/2

Specifications:

Contact rating: max. 100mA, 24V DC - endurance 200 000 cycles
 max. 2A, 125VAC - endurance 10 000 cycles
Contact resistance: 100mOhm max.
Insulation resistance: 1GOhm min. at 500V DC
Dielectric strength: 1 000V AC RMS
Operating force: 4.5 - 6.5N
Torque: 1.5Nm max. applied to nut
Soldering conditions: 350°C max., 5sec.
Panel thickness: min.: 1.5mm; max.: 4.0mm
Total travel: 2.5mm
Switching function: off - on
Contact bounce: 10ms
Material: Case / cap / bushing: polyamide 6/6
 Terminal / contact: gold over silver plated
IP rating: IP 67 (mounted)

X=CAP COLOR	
W	white
K	black
R	red
O	orange
Y	yellow
G	green
B	blue



Tolerances: 0.00: ±0.25mm 0.0: ±0.40mm		Date	Name	DPW 1 AG-x
		03/09	dr	
		knitter-switch		30 17 62
				Page 2/2
Modifications	Date	Name		

X-ON Electronics

Largest Supplier of Electrical and Electronic Components

Click to view similar products for [Pushbutton Switches](#) category:

Click to view products by [Knitter-Switch](#) manufacturer:

Other Similar products are found below :

[LW1L-M1C10V-A](#) [LW2L-A1C20M-GD](#) [LW2L-M1C20M-A](#) [60324L](#) [M7E-HRN2](#) [67021K512](#) [67081K512X](#) [701PB580](#) [719-5504-000](#)
[MDPSSGLFS](#) [810KSV30B](#) [FLT 2U EE 01A](#) [MML21KA3ABK](#) [MML23KA3AC05K-001](#) [MML23KW3AA01W](#) [8418K2](#) [8646AB6X718UL](#)
[8646ABUL](#) [FSDWH](#) [9001KXRK](#) [9001T8BK](#) [9533CD4+U574+U4922](#) [1203MRA](#) [A22EM01S](#) [A595](#) [1202A6](#) [12037A2ULCSA](#) [1203A2UL](#)
[ABD122N-B](#) [1211390004](#) [ABN111-Y](#) [ABN400-R](#) [1211500044](#) [1211580012](#) [1212MRA](#) [1232A6NF](#) [RA3CSH6A](#) [1241.1183.7047](#)
[1241.2511](#) [1241.3428](#) [1223A2ULCSA](#) [1223MRA](#) [1232AX2119](#) [1241.1183.8000](#) [1241.1183.8029](#) [1241.2506](#) [1241.2606](#) [12MA6](#)
[1301940184](#) [RELBARF6X10\(PLASTIC\)](#)